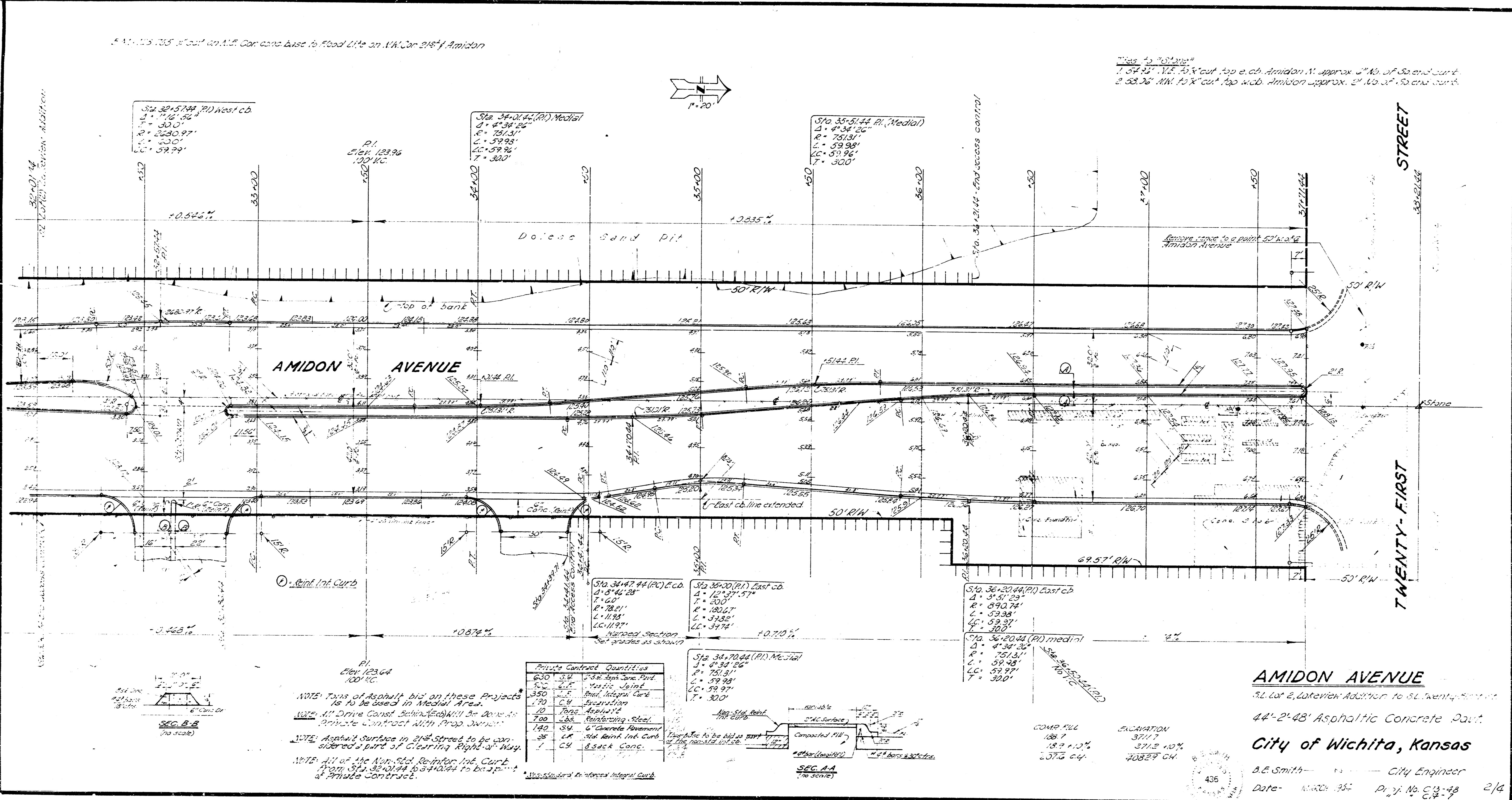


11-11-13 105' Street on Mid. Con. base to flood life on N.W. Cor. 218' Amidon

11-11-13 105' Street on Mid. Con. base to flood life on N.W. Cor. 218' Amidon



Private Contract Quantities	
630	3/4" x 3/4" Joint
350	1/2" x 1/2" Joint
190	1/2" x 1/2" Reinforcing Steel
700	1/2" x 1/2" Reinforcing Steel
140	1/2" x 1/2" Concrete Paving
28	1/2" x 1/2" Reinforcing Steel
7	1/2" x 1/2" Reinforcing Steel

NOTE: Points of Asphalt Pits on these Projects to be used in Median Area.
 NOTE: All Drive Curb Belongings will be done in Private Contract with Prop. Owners.
 NOTE: Asphalt Surface in 218' Street to be considered a part of Clearing Right of Way.
 NOTE: All of the Non-Std. Reinfor. Int. Curb from Sta. 35+00 to 35+10 to be a part of Private Contract.

AMIDON AVENUE

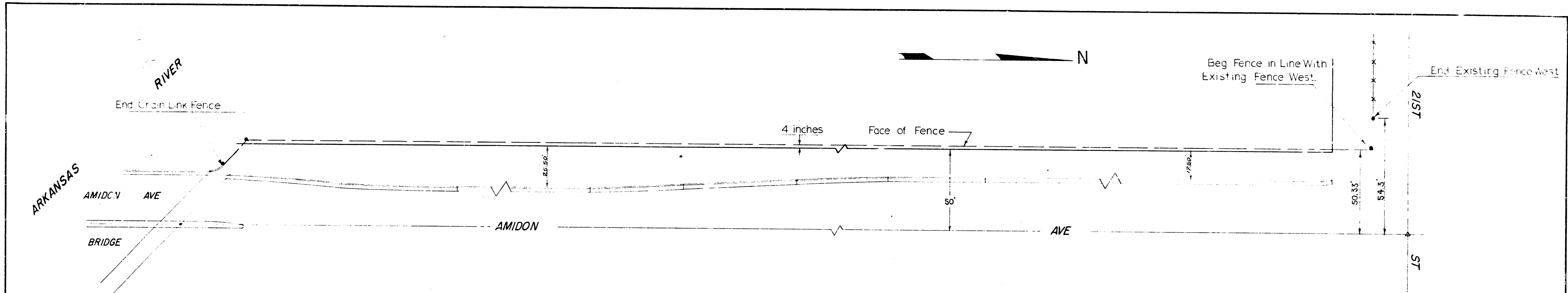
51' Cor. & Laterals Addition to 51' Twenty-First St.

44'-2'-48" Asphaltic Concrete Pavt.

City of Wichita, Kansas

B. E. Smith City Engineer
 Date: March 25, 1913 Proj. No. C-13-13 2/4





NOTES: All steel post shall provide means for fastening/tie wires to prevent vertical slippage of fabric.
 Fence will be bid as lineal feet of chain link fence, complete in place.
 All costs of material and erection is to be included in lineal feet bid price.

AMIDON AVE
 LEFT BANK ARKANSAS RIVER TO S.L. 21ST ST.
 CHAIN LINK FENCE
 PROJECT C12-2 Aug. 1964

