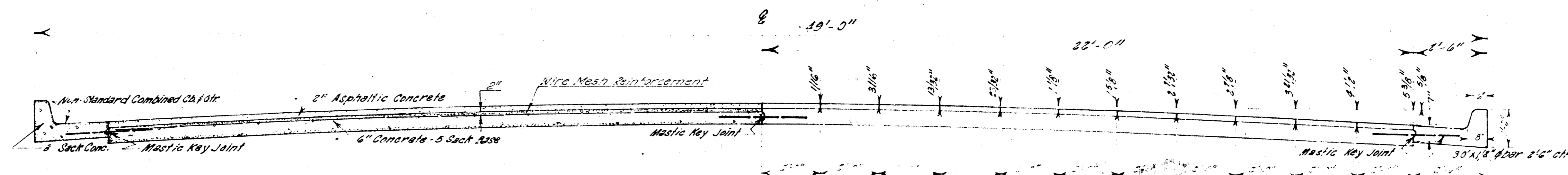


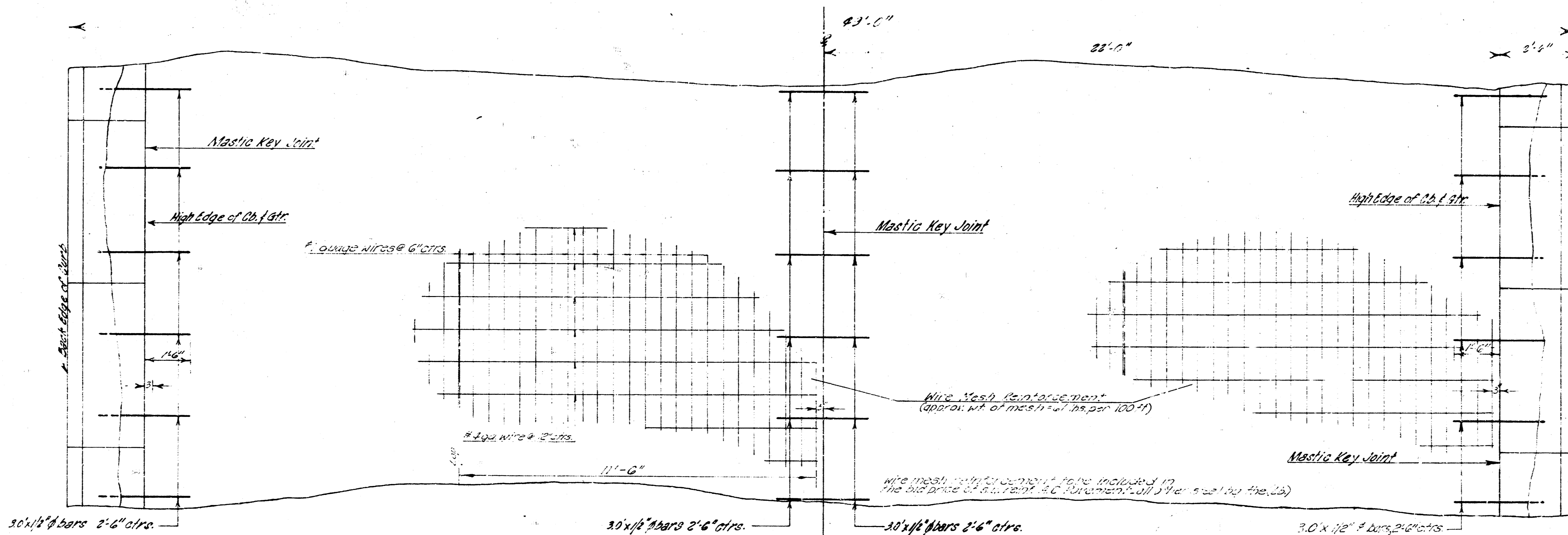
AMIDON AVENUE

Left Bank Big Arkansas River to S.L. Lot 2, Lakeview Addition

Project Number C12-2

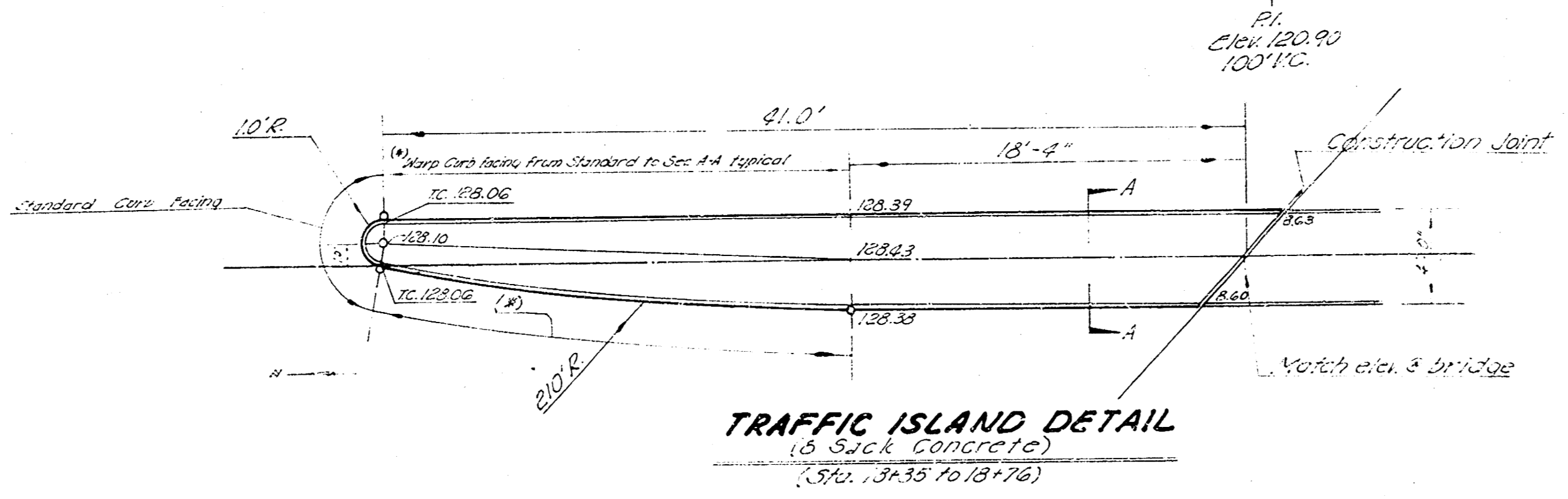
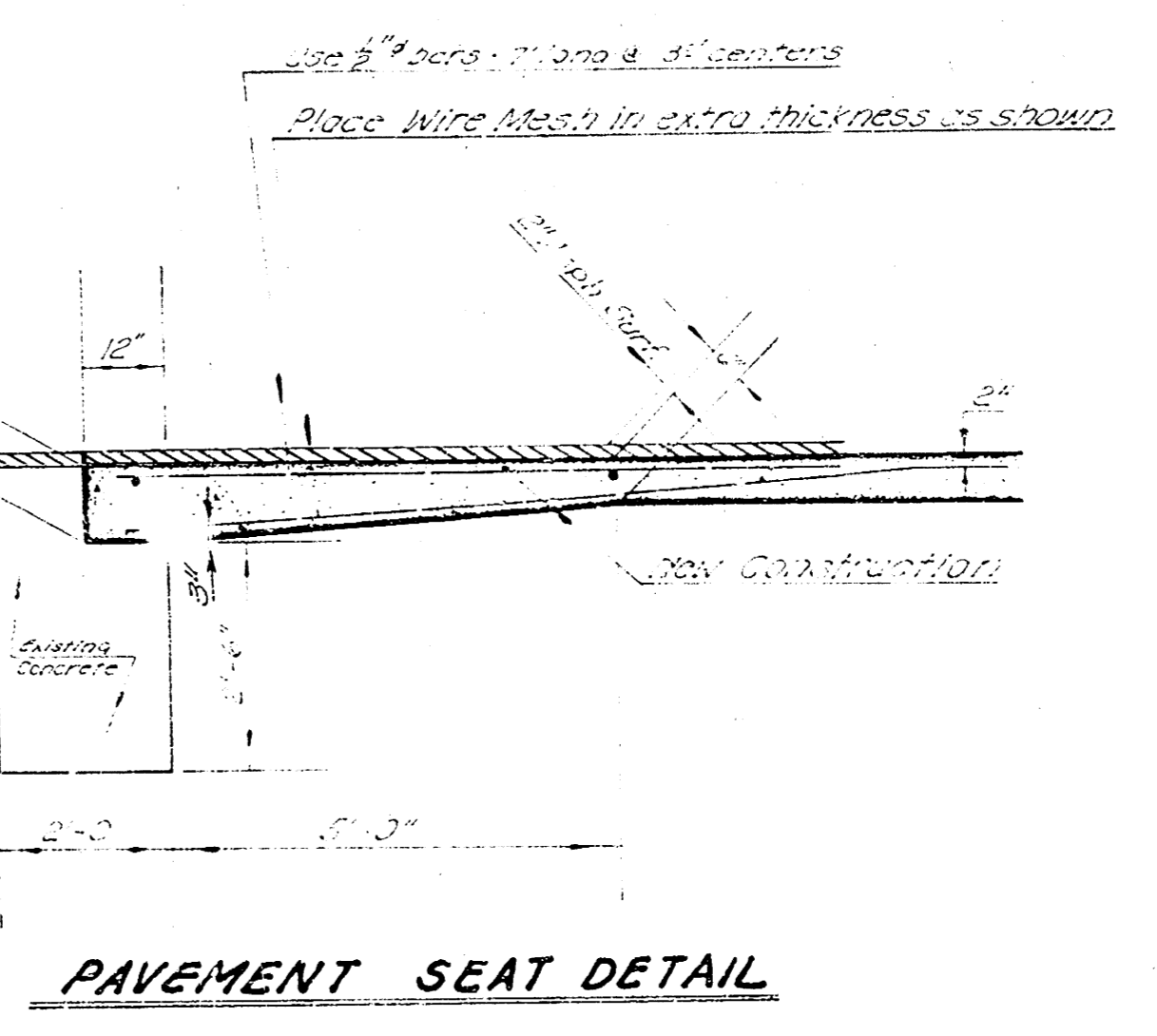
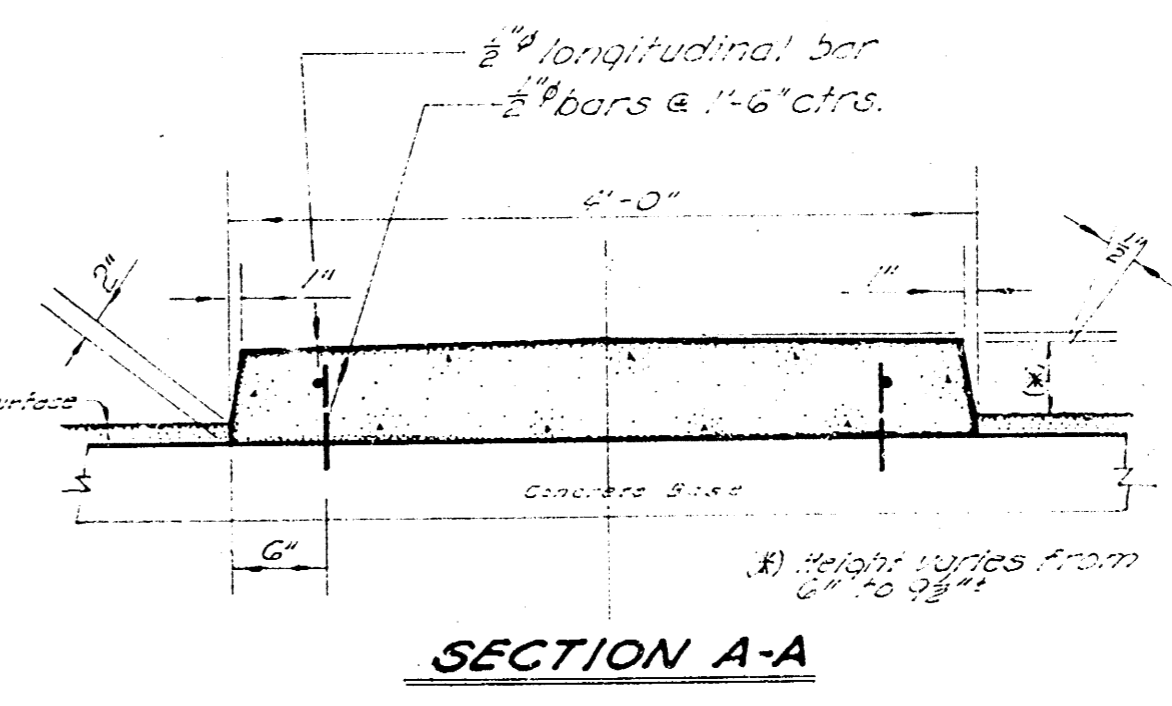
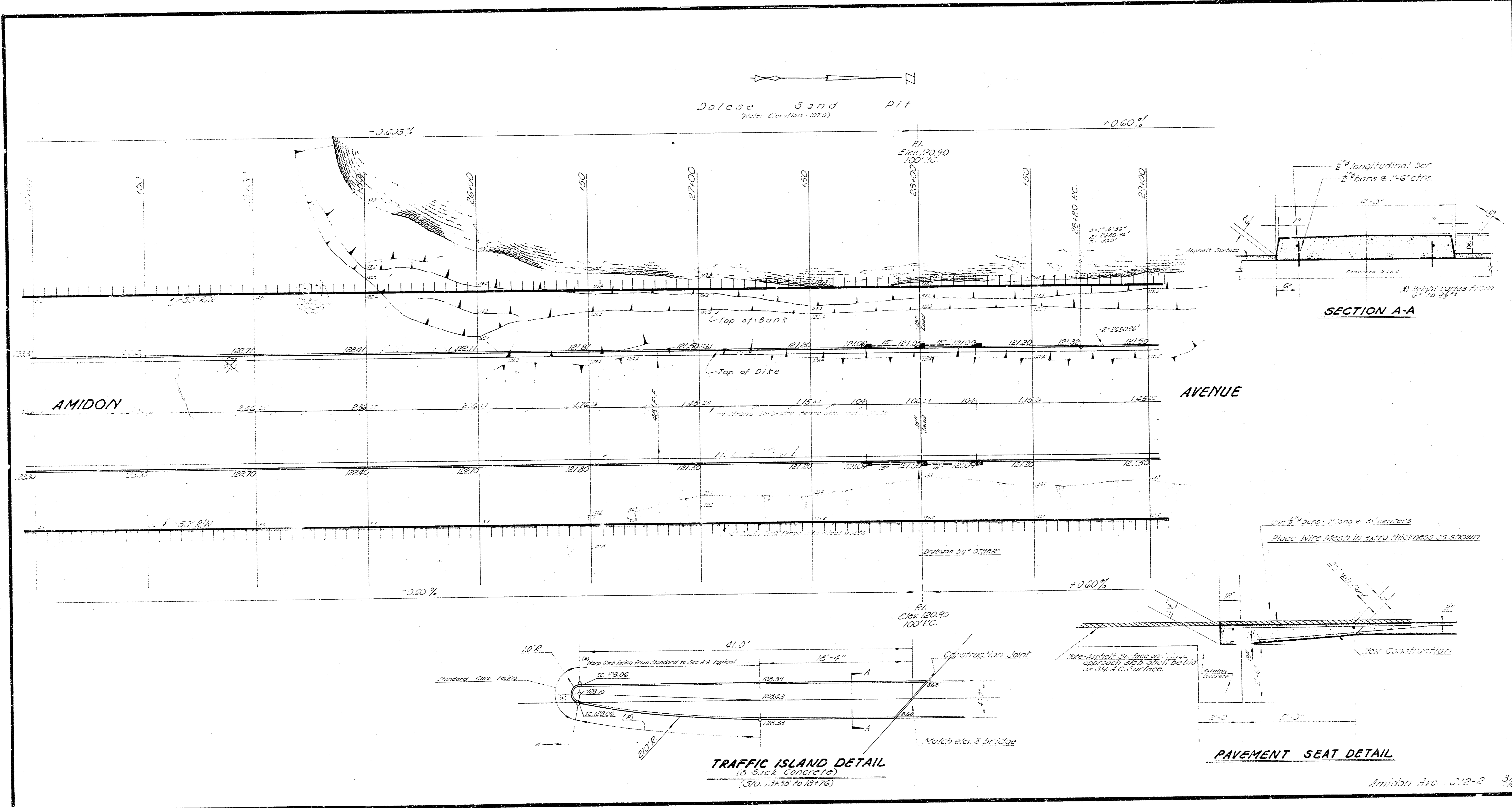


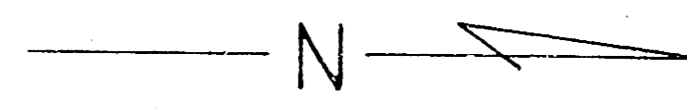
TYPICAL SECTION
Scale: 1" = 2'-0"



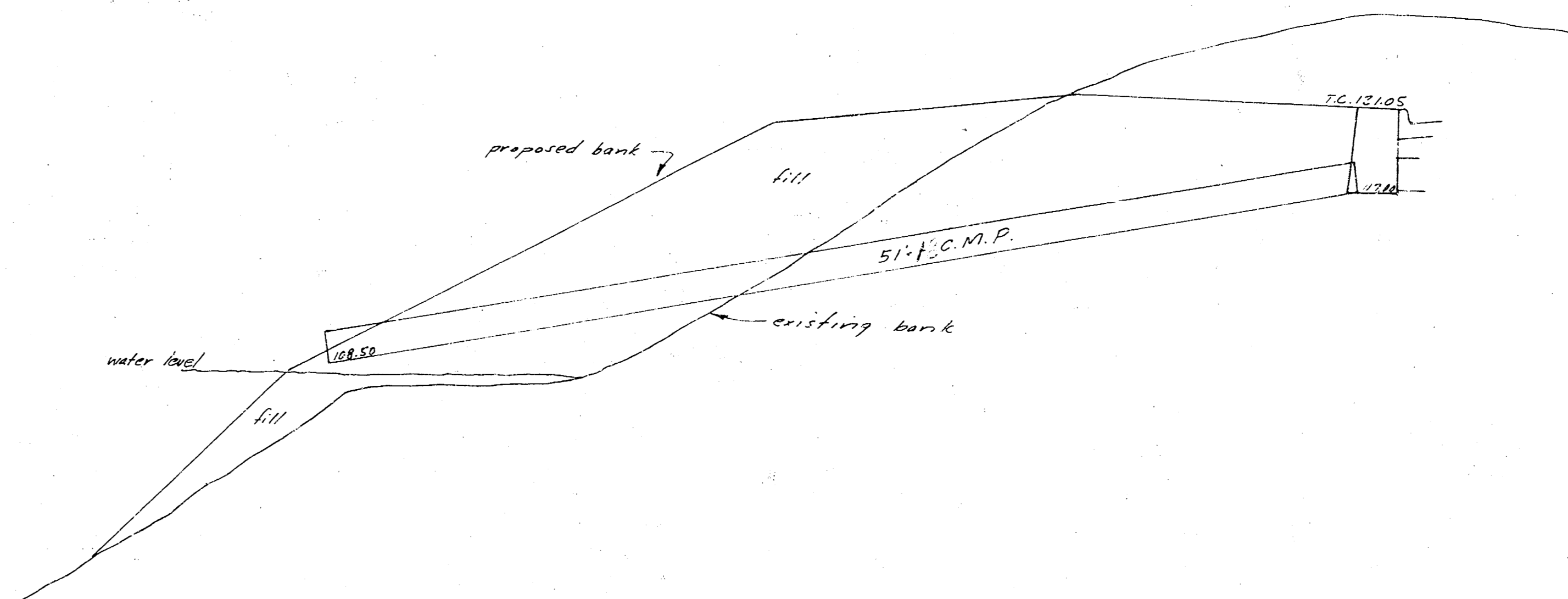
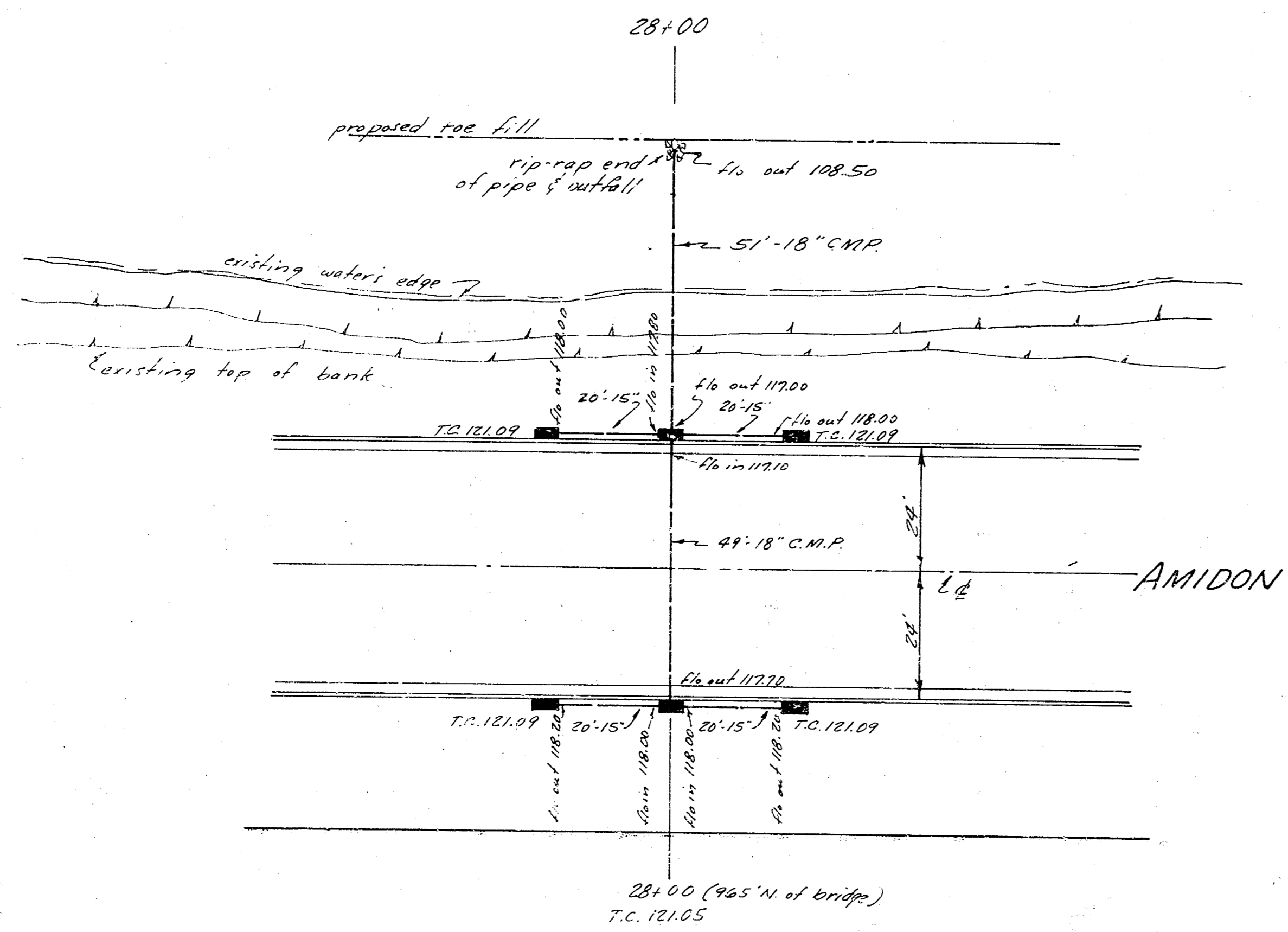
STEEL PATTERN
Scale: 1" = 2'-0"

1/4" for Wire Mesh. The reinforcement mastic should be applied to the wire of each sheet. Reinforcement shall be wired securely at the top edge of the mesh up to number 20 and the full width of the structure. The mode of fastening the mesh of wire mesh at the top edge of each sheet is approved by the Engineer.





Scale: 1" = 20'



NOTE: Pipe is to be installed after fill by paving Contractor & prior to paving. Inlets are to be constructed after paving. All backfill is to be flushed. Soil of flushing & rip-rap is to be included in bid price of pipe.

INCIDENTAL DRAINAGE
AMIDON AVE.
LEFT BANK ARKANSAS RIVER TO
S.L. LOT 2, LAKEVIEW ADDN.
CITY OF WICHITA, KANSAS
B.E. SMITH CITY ENGINEER
MAY 1934, PROJ. C12-2