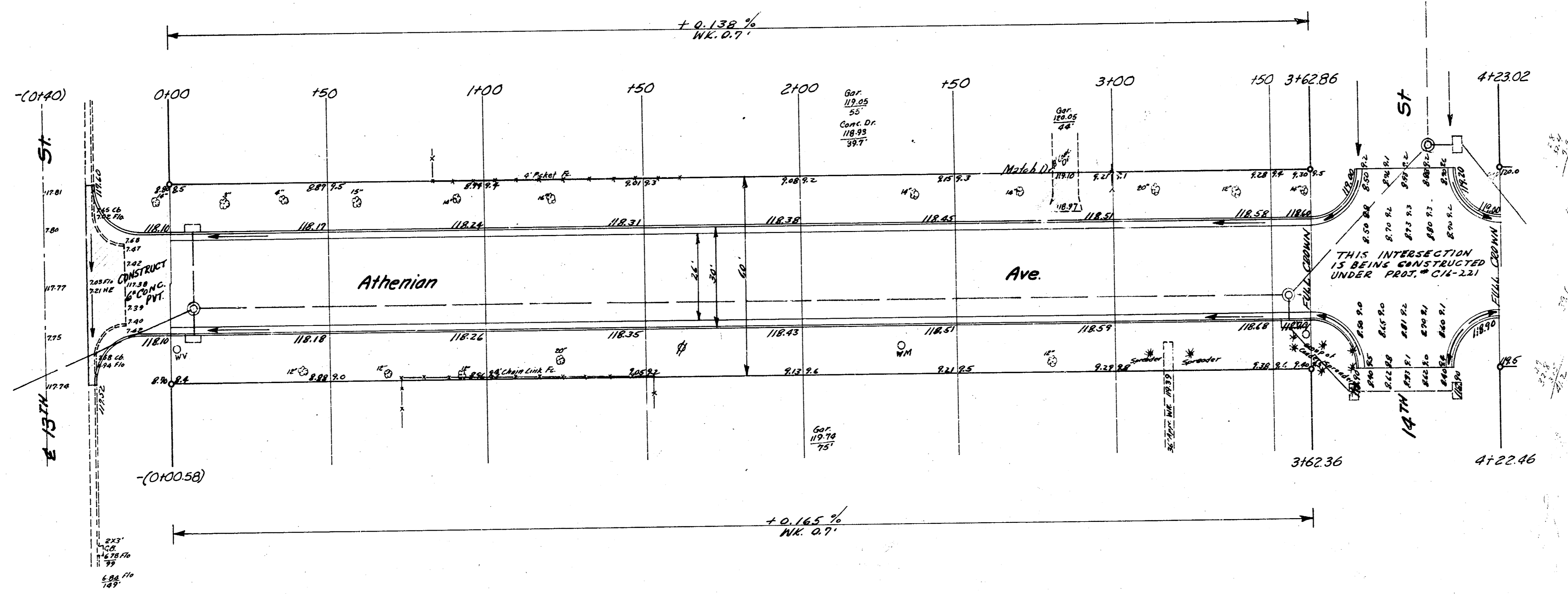
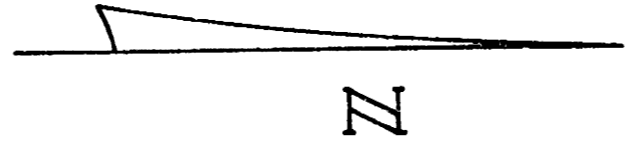



B.M. 121.44, SW Cor. 1st Conc. Step Ho # 1500 N. Athenian Ave.
 120.70, SE Cor. 1st Conc. Step S.S. School Ho. @ 15th & St Clair
 Base Line - 4' West of Face of West Cb



11/15/58
 B.E. Smith
 City Engineer

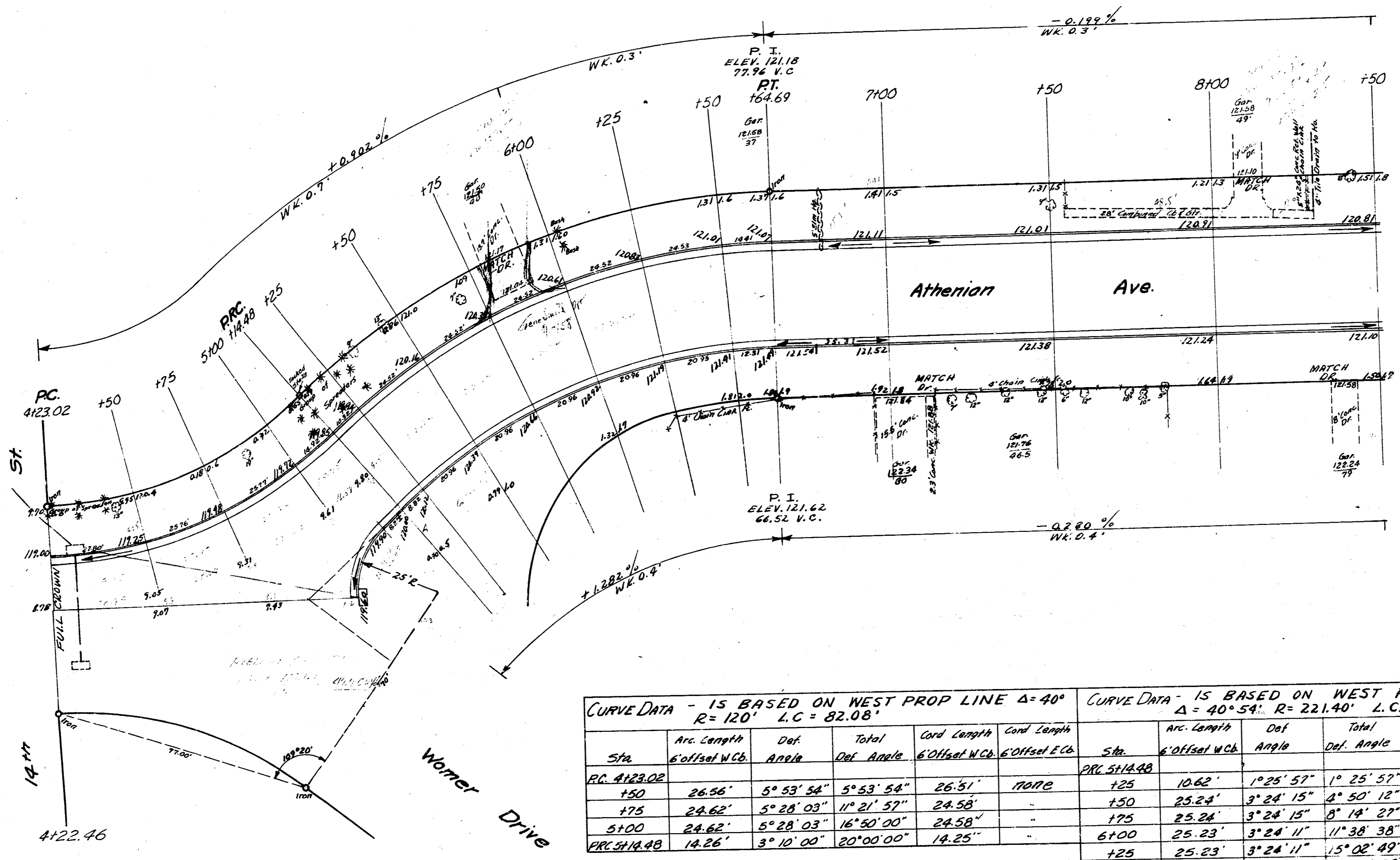
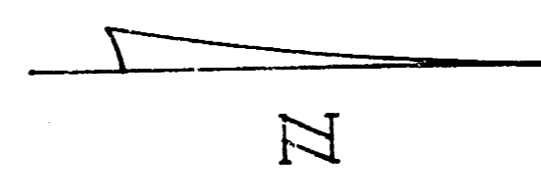
Excavation

Prop	0.4
1354.1	176.5
+10% 135.3	+10% 176.2
1489.5	199.2


1/5

ATHENIAN
 N. 13th to S. 15th
 2-26-30 A.C.
 CITY OF WICHITA, KANSAS
 B.E. SMITH - CITY ENGINEER
 AUG. 1958 Proj. No. C16-220

B.M. 12144, SW Cor 1st Cons. Strip of Ho^u 1500 N. Athenian
 Base Line 4' West of Face of West Cb



CURVE DATA - IS BASED ON WEST PROP LINE Δ=40° R=120' L.C.=82.08'						CURVE DATA - IS BASED ON WEST PROP LINE Δ=40°54' R=22.40' L.C.=15.71'					
Sta	Arc Length	Def. Angle	Total Def. Angle	Cord Length	Offset E.C.	Sta	Arc Length	Def. Angle	Total Def. Angle	Cord Length	Offset E.C.
PC 4123.02						PC 5114.88					
150	26.96'	5° 53' 54"	5° 53' 54"	26.51'	10.02'	125	10.62'	1° 25' 57"	1° 25' 57"	10.62'	8.52'
175	24.62'	5° 28' 03"	11° 21' 57"	24.58'		150	25.24'	3° 24' 15"	4° 50' 12"	25.22'	20.24'
5100	24.62'	5° 28' 03"	16° 50' 00"	24.58'		175	25.24'	3° 24' 15"	8° 14' 27"	25.22'	20.24'
PRC 5114.88	14.26'	3° 10' 00"	20° 00' 00"	14.25'		6100	25.23'	3° 24' 11"	11° 38' 38"	25.22'	20.23'
						125	25.23'	3° 24' 11"	15° 02' 49"	25.22'	20.23'
						150	25.23'	3° 24' 11"	18° 27' 00"	25.22'	20.23'
						PT 6164.69	14.83'	2° 00' 00"	20° 27' 00"	14.83'	11.89'

Athenian Ave.
 C16-220

(2/5)

