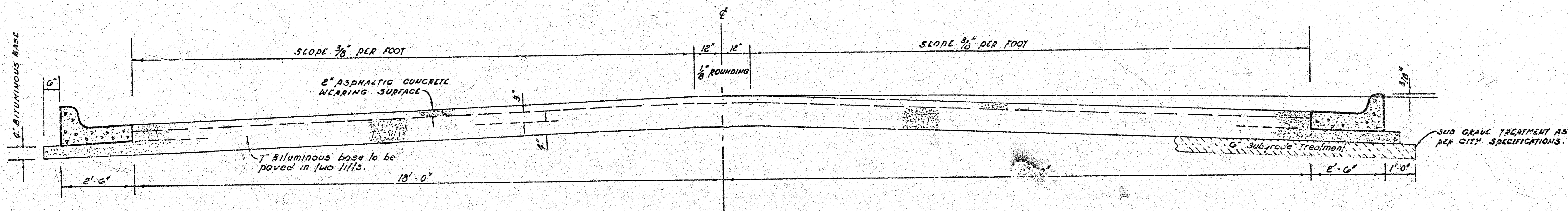


ANNA AVENUE

N.L. KELLOGG DRIVE TO THE N.L. OF THE SOUTH 100'
OF LOT 2, PLUMB ADDITION.

PROJECT No. 472-76-245-80634000-000-001



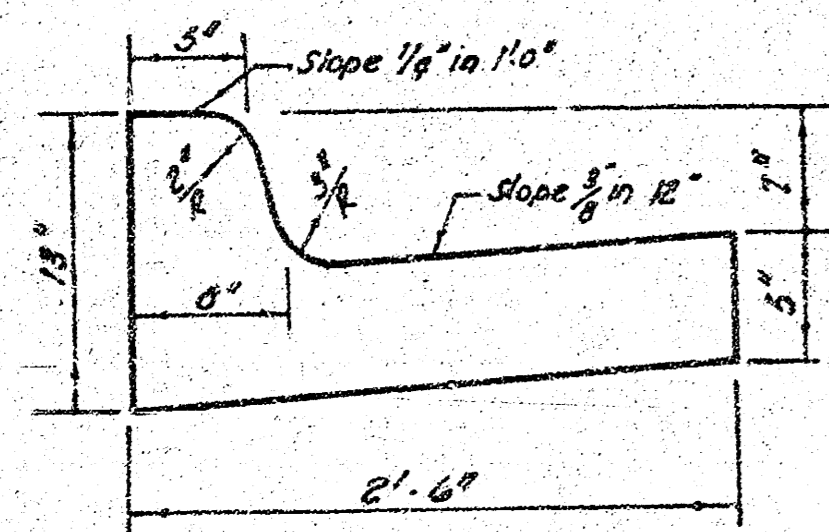
TYPICAL SECTION

The A.C. pavement between the curb & gutter shall be paid as sq yds 9" A.C. pavement (7" Bituminous Base). The Bituminous Base under the curb & gutter shall be paid as sq yds 9" Bituminous Base.

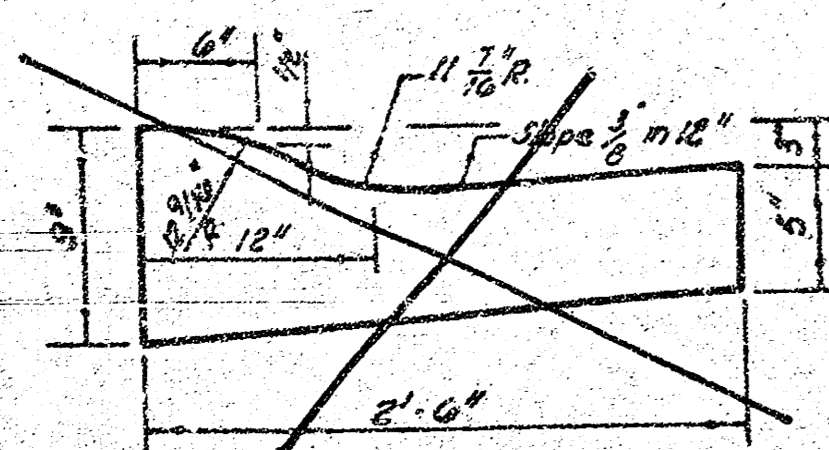
4" ASPHALTIC CONCRETE PAVEMENT WITH BITUMINOUS BASE

A TACK COAT OF EMULSIFIED ASPHALT (SS-1H) SHALL BE APPLIED AT AN APPROXIMATE RATE 0.05 GALLONS PER SQ YD BETWEEN LIFTS OF ASPHALTIC MATERIALS WHEN ORDERED BY THE ENGINEER. TACK COAT WILL NOT BE PAID FOR DIRECTLY AND SHALL BE CONSIDERED AS SUBSIDIARY TO PRICE BID FOR ASPHALTIC PAVEMENT. BITUMINOUS BASE AND ASPHALTIC CONCRETE WEARING SURFACE SHALL BE PLACED WITH A LAYDOWN MACHINE HAVING AUTOMATIC CONTROLS FOR CROWN AND GRADE. CONSTRUCTION JOINTS IN EACH LIFT SHALL BE STAGGERED A MINIMUM DISTANCE OF 1' WITH JOINTS IN PRECEDING LIFTS AND SUCH THAT A JOINT WILL BE CONSTRUCTED ON THE PAVEMENT CENTERLINE IN THE TOP LIFT.

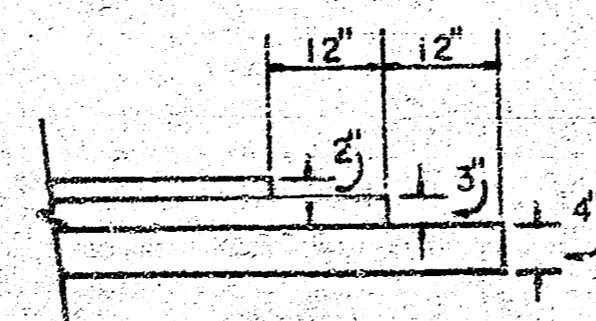
COMBINED CURB & GUTTER



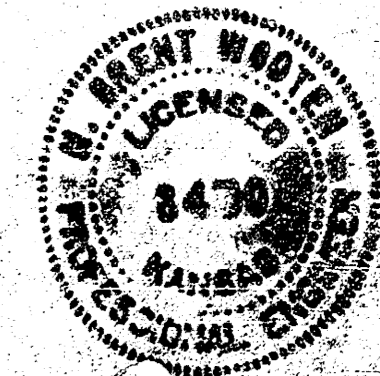
ROLL TYPE CURB & GUTTER



DETAIL OF TRANSVERSE CONSTRUCTION JOINTS



TRANSVERSE CONSTRUCTION JOINTS SHALL BE CONSTRUCTED IN FLEXIBLE BASE PAVEMENTS AT LOCATIONS WHERE PAVEMENT TEMPORARILY ENDS TO FACILITATE FUTURE PAVEMENT CONSTRUCTION AS SHOWN BY DETAIL. THE COST OF CONSTRUCTING THE TRANSVERSE CONSTRUCTION JOINTS SHALL NOT BE MEASURED OR PAID FOR DIRECTLY BUT SHALL BE INCLUDED IN THE BID PRICE FOR SQUARE YARDS OF ASPHALTIC CONCRETE PAVEMENT.



CITY OF WICHITA, KANSAS

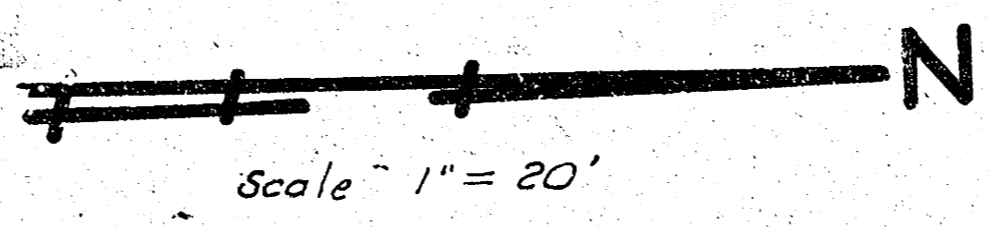
DEPARTMENT of PUBLIC WORKS - Engineering Division.

D.S. Sellers Acting City Engineer.

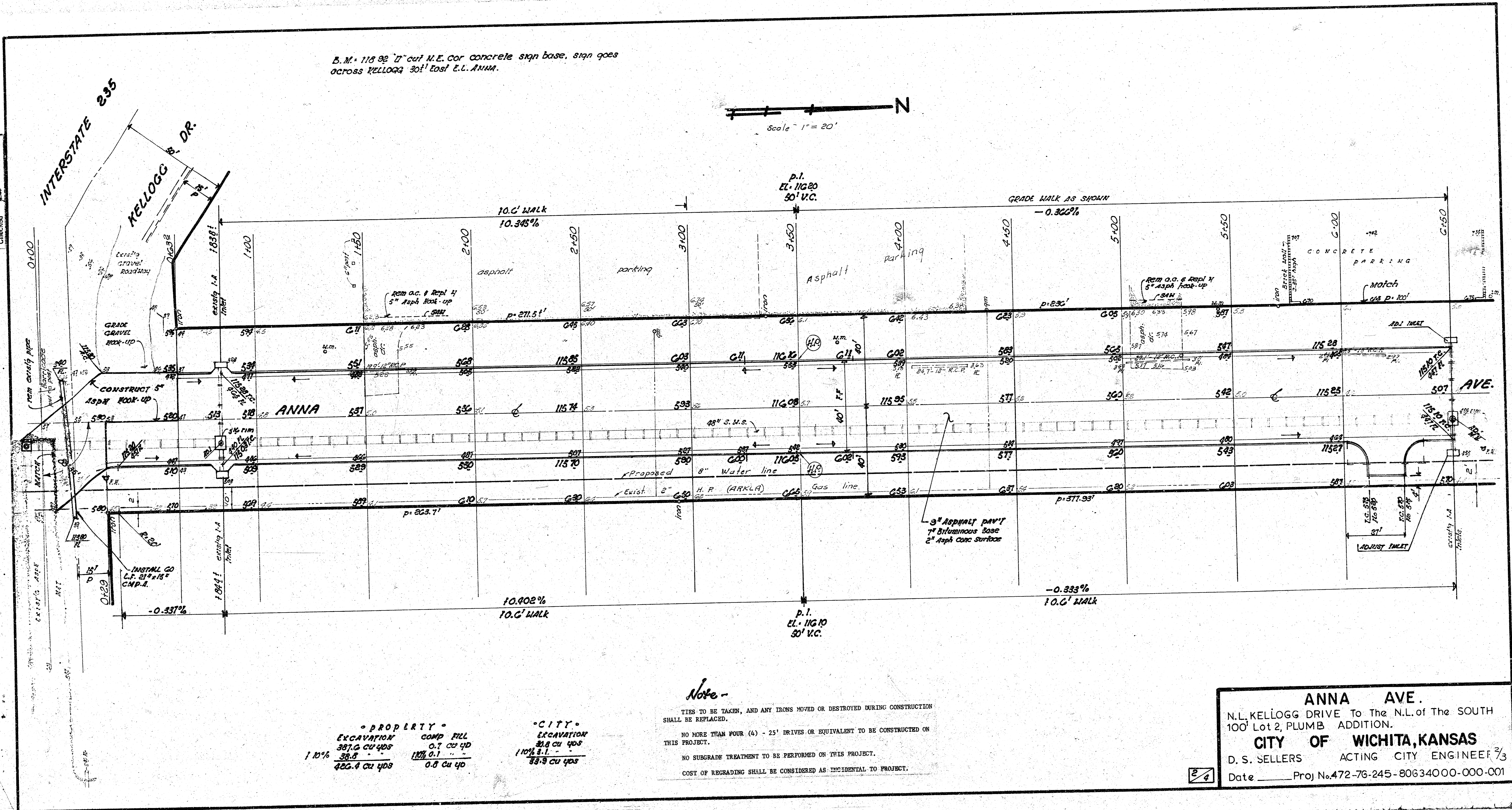
DATE _____

1/3

B.M. 118 92 17' cut N.E. cor concrete sign base, sign goes across KELLOGG 30' East E.L. ANNA.



Survey D.C.D. 020-53
Plan 4.6.422
Exc
Checked

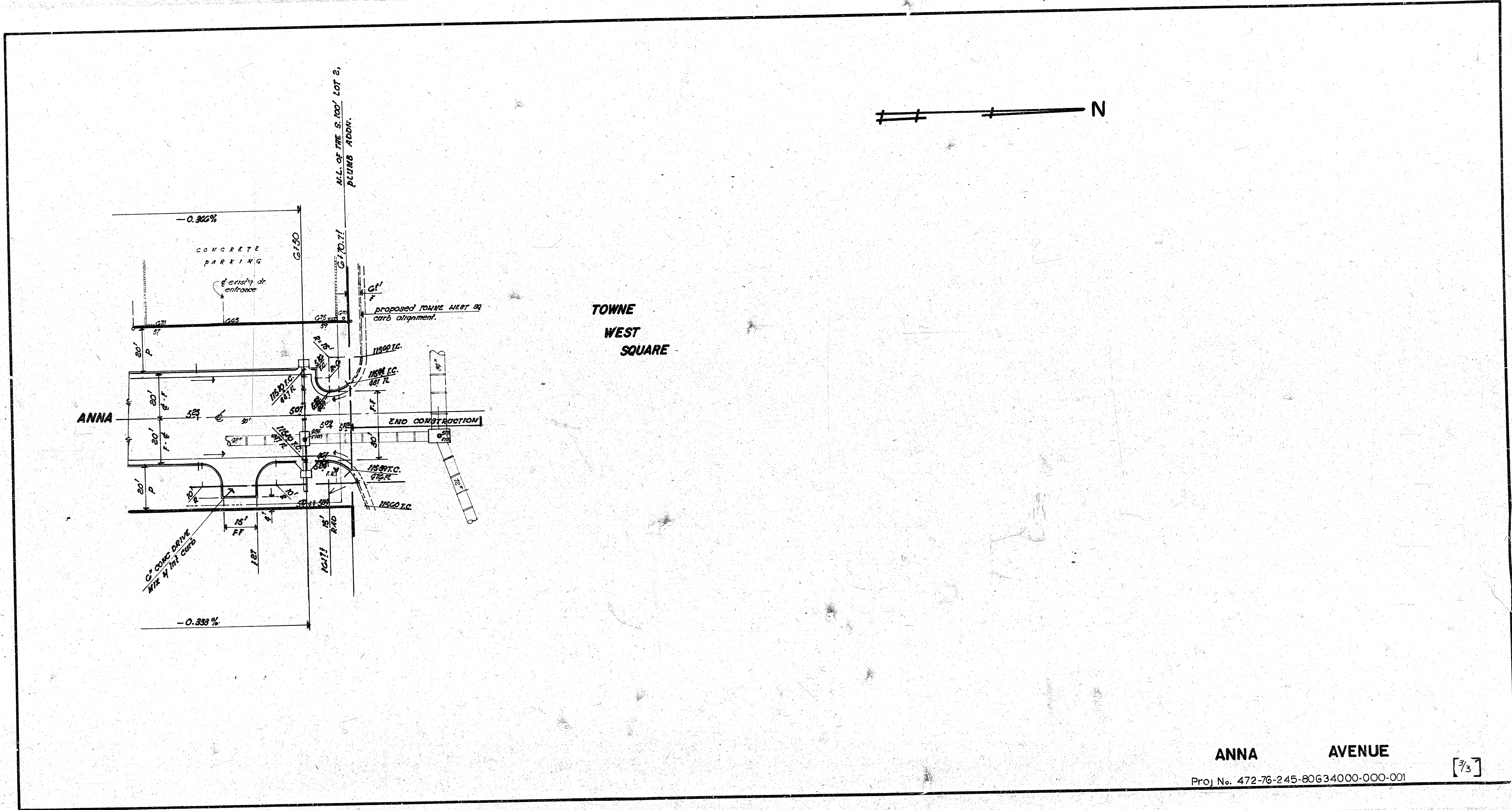


PROPERTY		CITY	
EXCAVATION	COMP FILL	EXCAVATION	COMP FILL
1.10% 387.6 cu yds	0.7 cu yd	110% 31.8 cu yds	33.5 cu yds
38.8	0.1		
422.4 cu yds	0.8 cu yd		

Note -
 TIES TO BE TAKEN, AND ANY IRONS MOVED OR DESTROYED DURING CONSTRUCTION SHALL BE REPLACED.
 NO MORE THAN FOUR (4) - 25' DRIVES OR EQUIVALENT TO BE CONSTRUCTED ON THIS PROJECT.
 NO SUBGRADE TREATMENT TO BE PERFORMED ON THIS PROJECT.
 COST OF REGRADING SHALL BE CONSIDERED AS INCIDENTAL TO PROJECT.

ANNA AVE.
 N.L. KELLOGG DRIVE To The N.L. of The SOUTH
 100' Lot 2, PLUMB ADDITION.
CITY OF WICHITA, KANSAS
 D. S. SELLERS ACTING CITY ENGINEER 3/3
 Date _____ Proj No. 472-76-245-80634000-000-001

FILMED FROM THE BEST AVAILABLE COPY



ANNA AVENUE
 Proj No. 472-76-245-80634000-000-001

[7/3]

FILMED FROM THE BEST AVAILABLE COPY