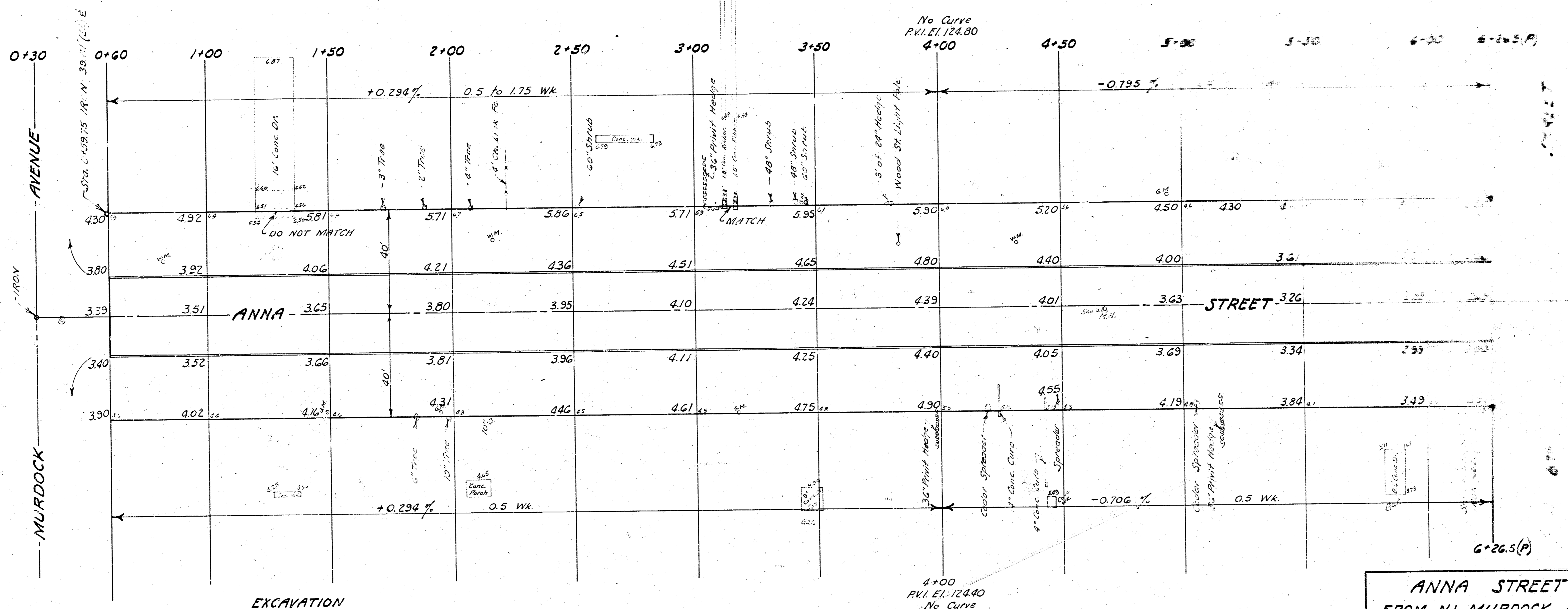


D.M. 124.25 RR Spike W Side Street
Light Pole, S.E. Corner Anna & Murdock

REFERENCE POINTS TO IRON ON E STA 0+30
 1. 56.93' SW to "X" Cut on N.E. Corner Concrete Drive.
 2. 36.28' SE to Nail in Bottle Cap S.W. Side P. Pole.
 3. 49.71' N.W. to Corner Iron.

Scale: 1" = 20'

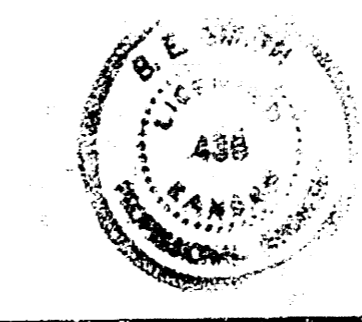


EXCAVATION

PROPERTY	CITY
2025 Cu.Yds.	234 Cu.Yds.
+10% 202 "	23 "
Totals 2227 Cu.Yds.	257 Cu.Yds.

ANNA STREET
 FROM N.L. MURDOCK AVE.
 TO S.L. NINTH STREET
 30' Conc. & Int. Curb
 B.E. SMITH CITY ENGINEER
 CITY OF WICHITA, KANSAS
 JULY 1963
 Project No. C12-74

Survey 7/22/63
 114 #33
 Drawn by J.A.
 Checked by J.L.



B.M. 124.71 NE Corner Conc. Step House #301 N. Anna

B.M. 124.70 City Standard on S.W. Corner Anna & 9th

