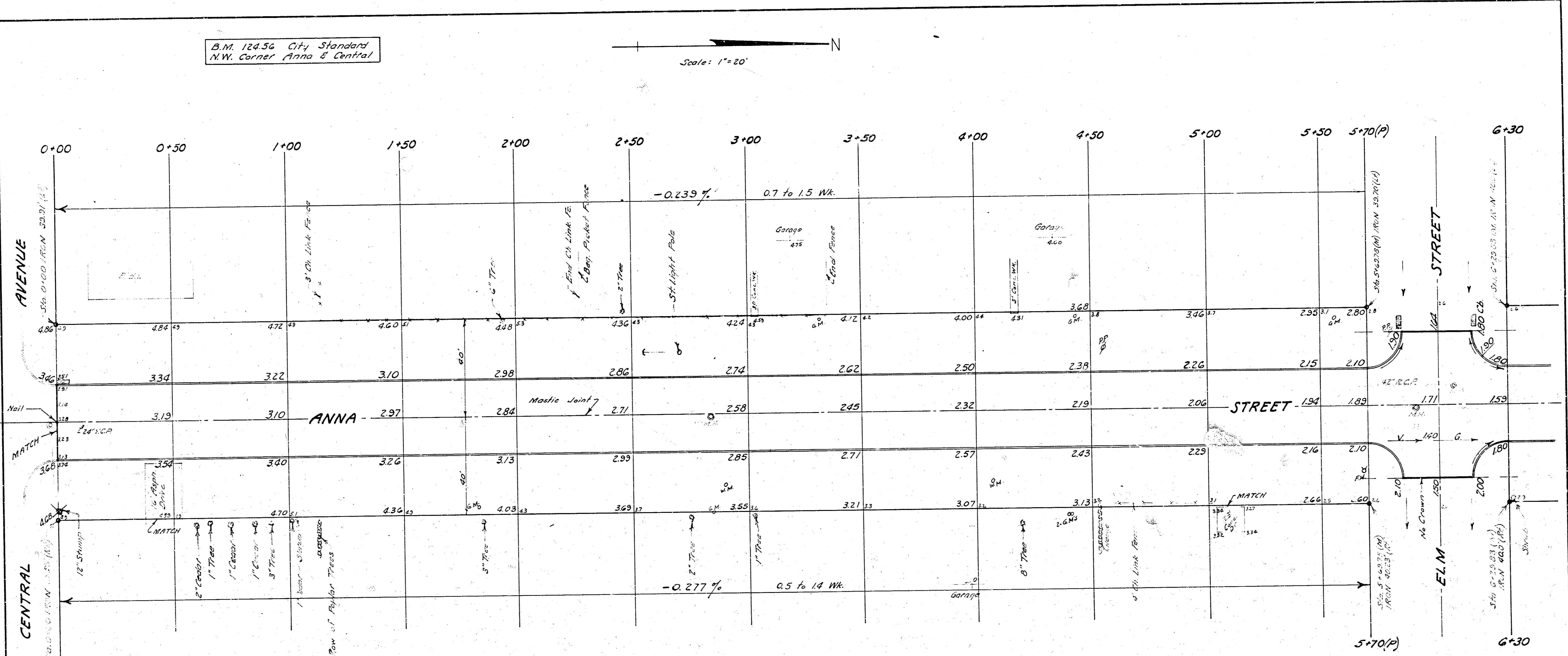


B.M. 12456 City Standard
N.W. Corner Anna & Central

Scale: 1" = 20'

Sum: D.B.B.
Plan: J.L.A.
Ck: C.K.
Checked:



EXCAVATION

| PROPERTY | CITY |
|-----------------------------|---------------------|
| 2474 Cu. Yds. | 457 Cu. Yds. |
| +10% 247 | 46 |
| Totals 2721 Cu. Yds. | 503 Cu. Yds. |

ANNA STREET
FROM N.L. CENTRAL AVENUE
TO N.L. MURDOCK AVENUE
30'-6" Conc. & Int. Curb
B.E. SMITH CITY ENGINEER
CITY OF WICHITA, KANSAS
OCT. 1963
Project No. C13-56



B.M. 124.25 R.R. Spike W Side Street
Light Pole, S.E. Corner Murdock & Anna

NOTE: For Reference Points to IRON Sta. 12+20.4
See Pavement Plan on Project C-12-74

