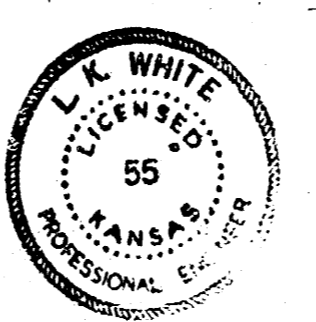
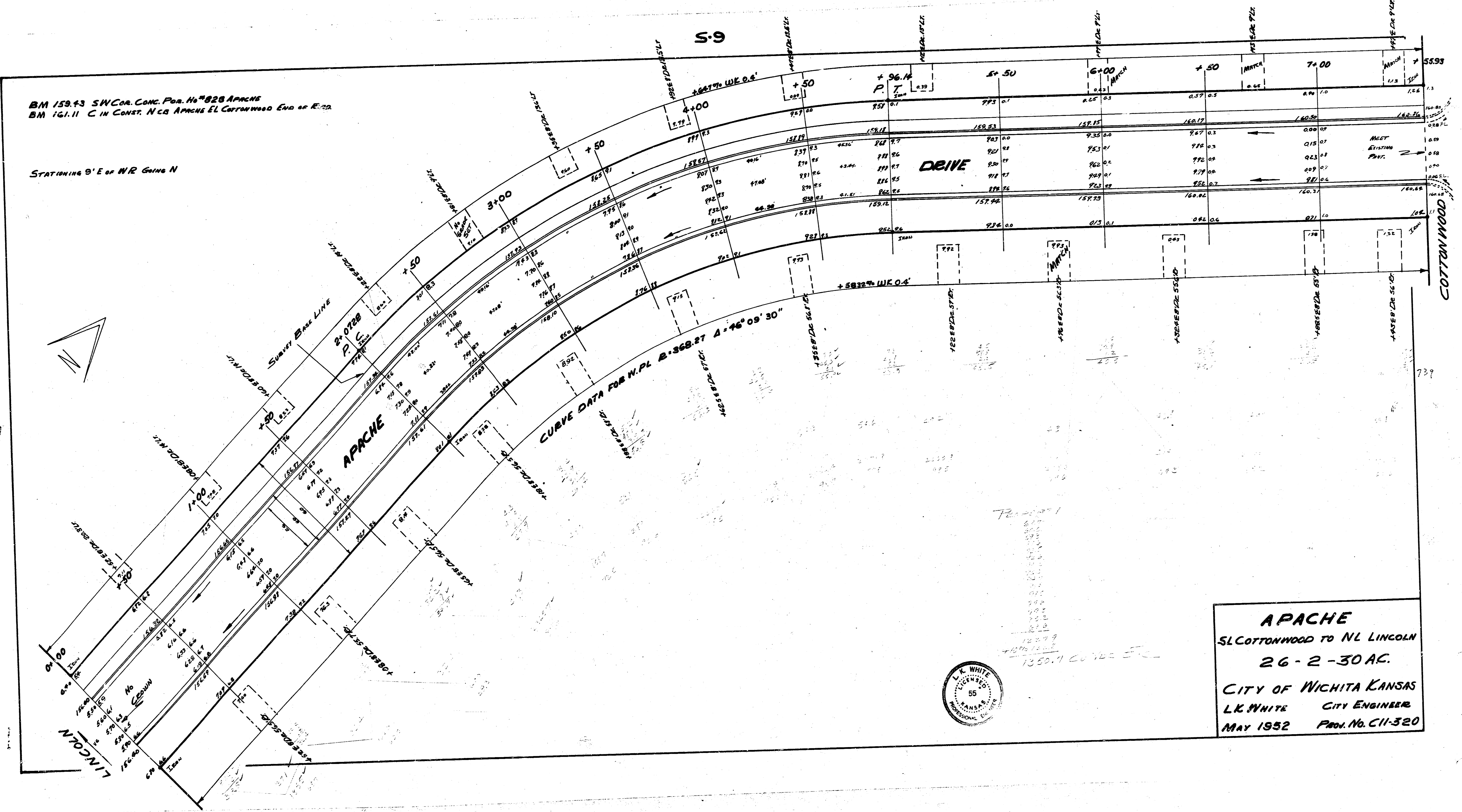


BM 159.43 SW Cor. Conc. Pav. No. 828 APACHE  
 BM 161.11 C in Const. N & S APACHE EL Cottonwood End of E. 22'

STATIONING O' E of N.R. Gains N



**APACHE**  
 S.L. COTTONWOOD TO N.L. LINCOLN  
 26-2-30 AC.  
 CITY OF WICHITA KANSAS  
 L.K. WHITE CITY ENGINEER  
 MAY 1952 PROJ. NO. C11-320



K-3

