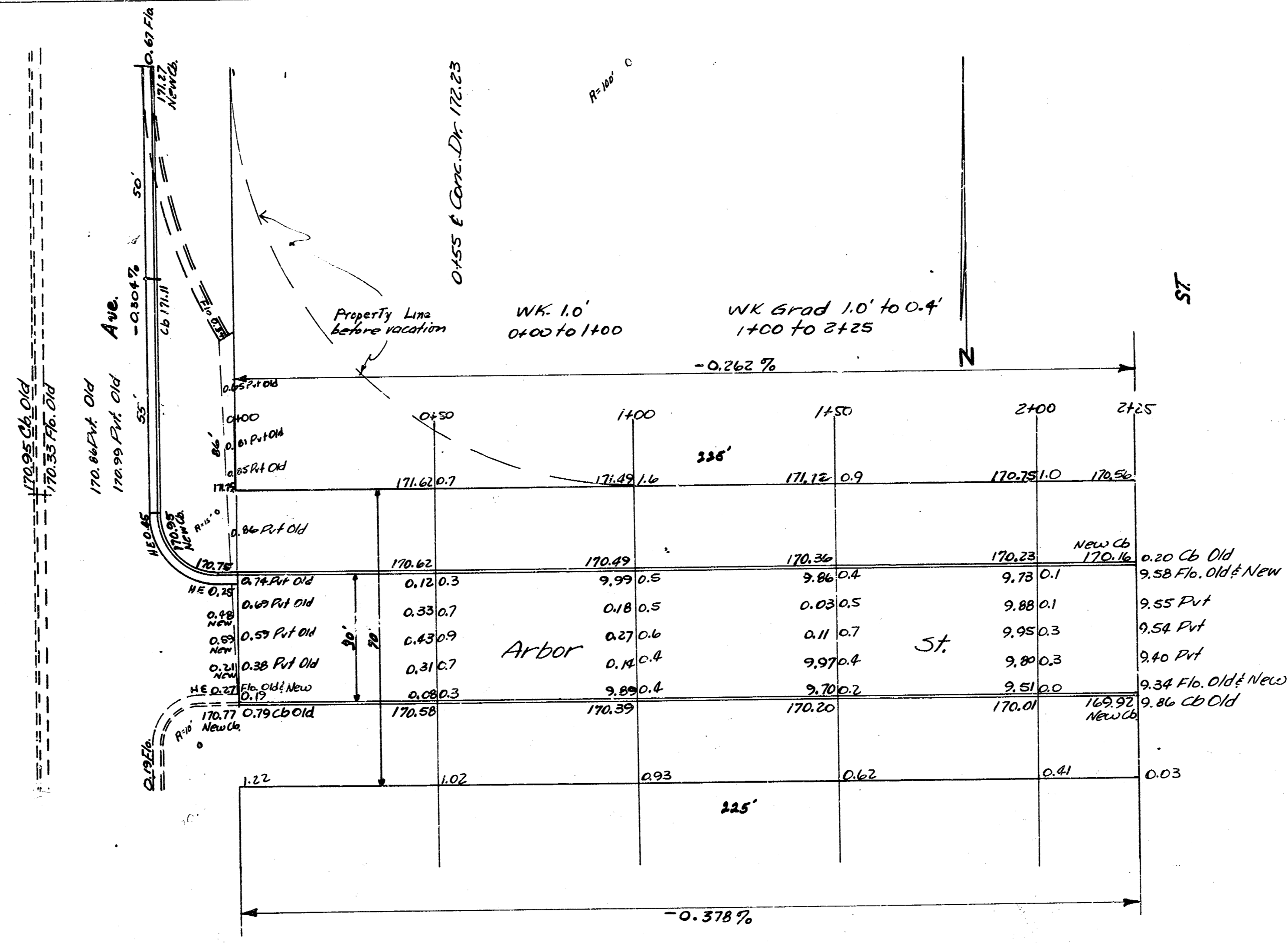
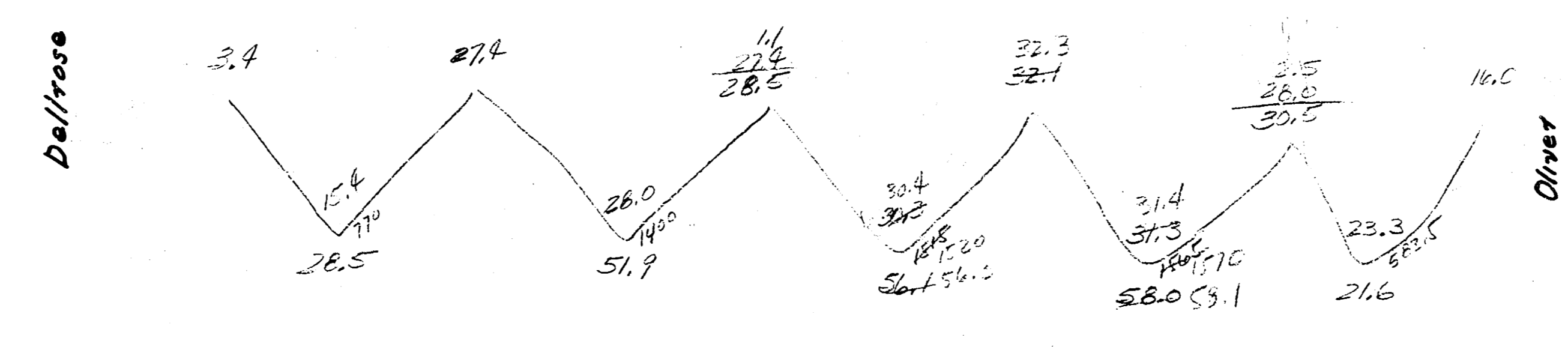


B.M. 16970'x' Top of cb. W.S. Oliver, 3L. Arbor



172.5
 172.1
 172.1
 172.0
 171.6
 171.1
 170.6
 237.7



Arbor ST.
 E.L. Dallrose — W.L. Oliver
 30' Cono. & Cb.
 City of Wichita, Kansas
 L.K. White City Engineer
 September 1948 Project CR-182