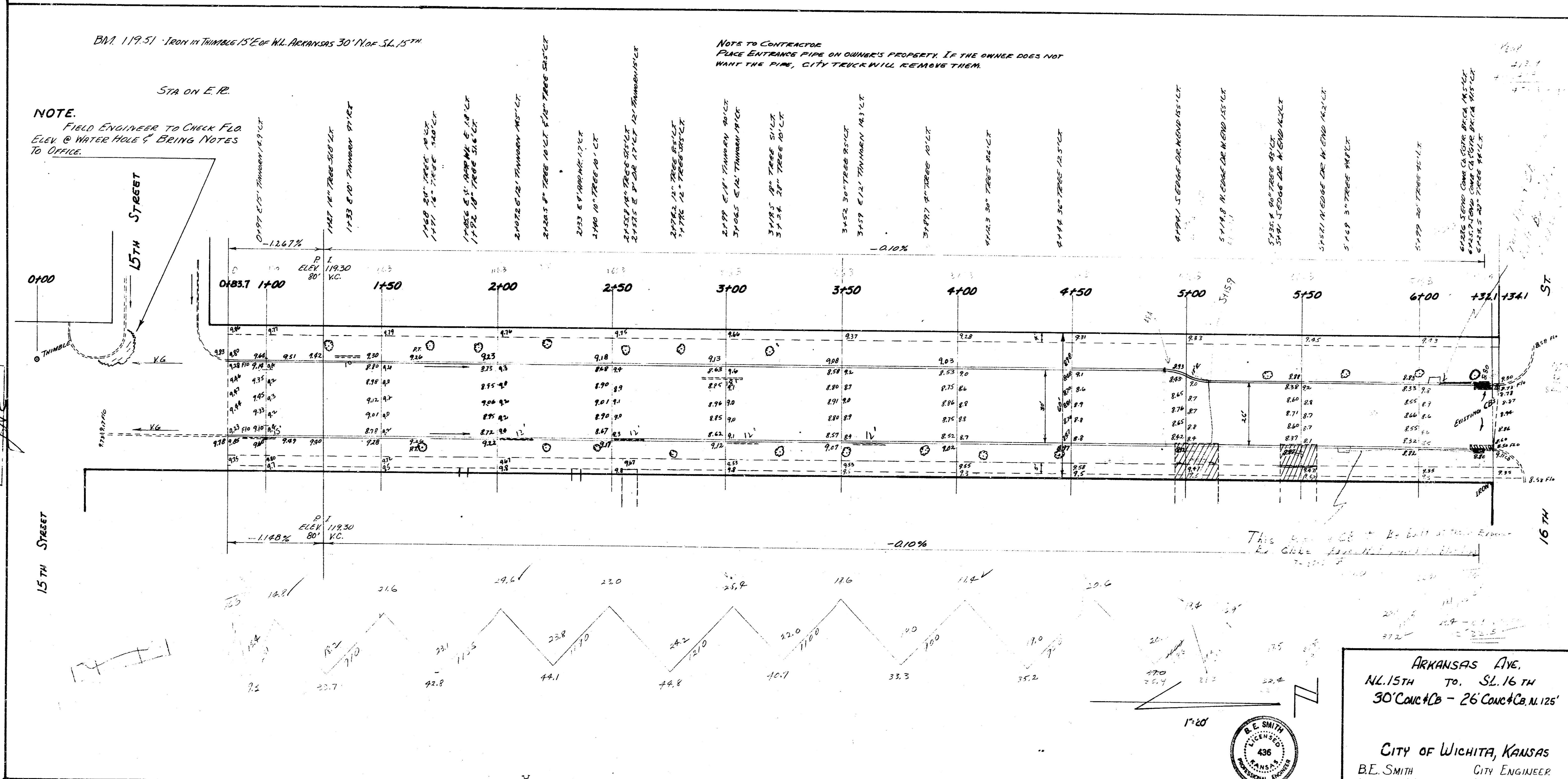


B.M. 119.51 Iron in Tumbler 15' E of N.L. Arkansas 30' N of S.L. 15th

STA ON E.R.

NOTE:  
FIELD ENGINEER TO CHECK FLD  
ELEV. @ WATER HOLE & BRING NOTES  
TO OFFICE.

NOTE TO CONTRACTOR  
PLACE ENTRANCE PIPES ON OWNER'S PROPERTY. IF THE OWNER DOES NOT  
WANT THE PIPES, CITY TRUCK WILL REMOVE THEM.



ARKANSAS AVE.  
N.L. 15TH TO S.L. 16TH  
30' CONC. CB - 26' CONC. CB, N. 125'

CITY OF WICHITA, KANSAS  
B.E. SMITH CITY ENGINEER  
Jan. 22, 1953 Proj. No. C12-215