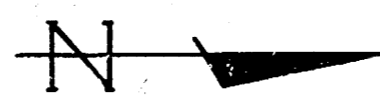
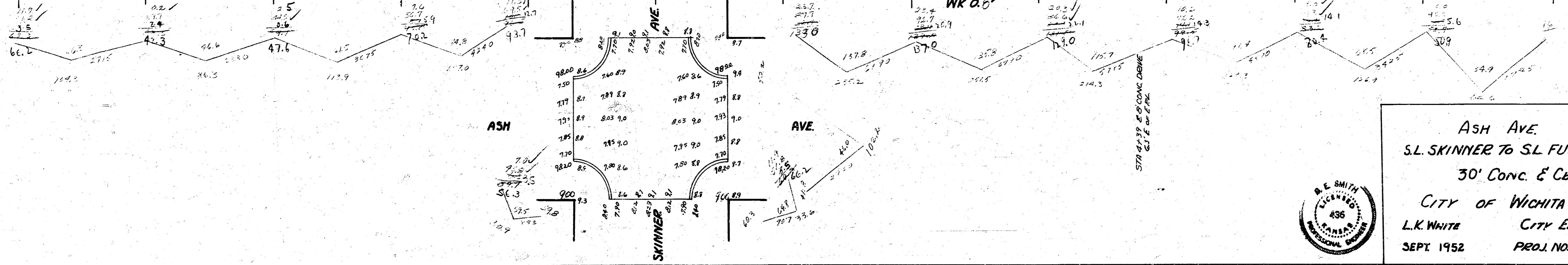
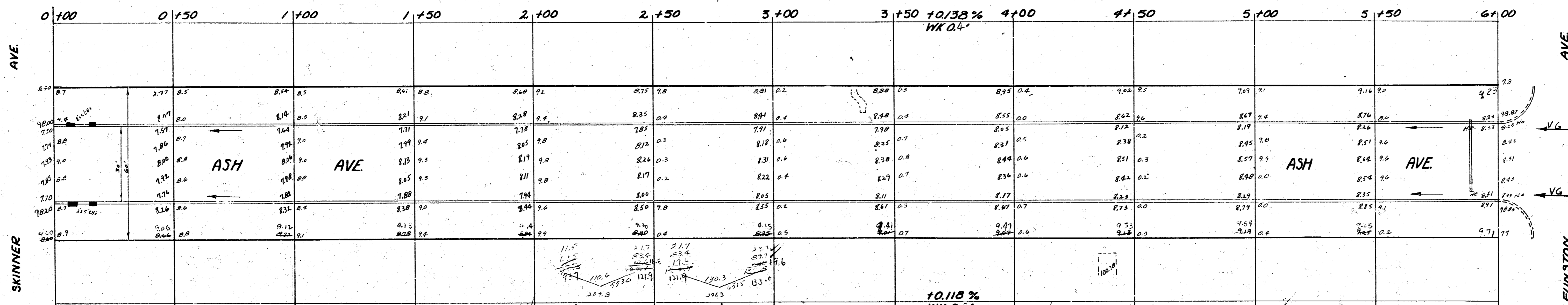


BM. 104.87 S.W. Cor. Conc. Pavch Nos. 1816 S. Ash
BM. 98.33 Top Cb S. End Ret. Funston & Ash
98.83



Prop

104.3
82.5
115.9
157.0
207.8
247.5
285.2
321.5
357.3
392.9
428.4
463.7
498.8
533.7



ASH AVE.
S.L. SKINNER TO S.L. FUNSTON
30' CONC. & Cb.
CITY OF WICHITA KANSAS
L.K. WHITE CITY ENGINEER
SEPT. 1952 PROJ. NO. C-12-144

