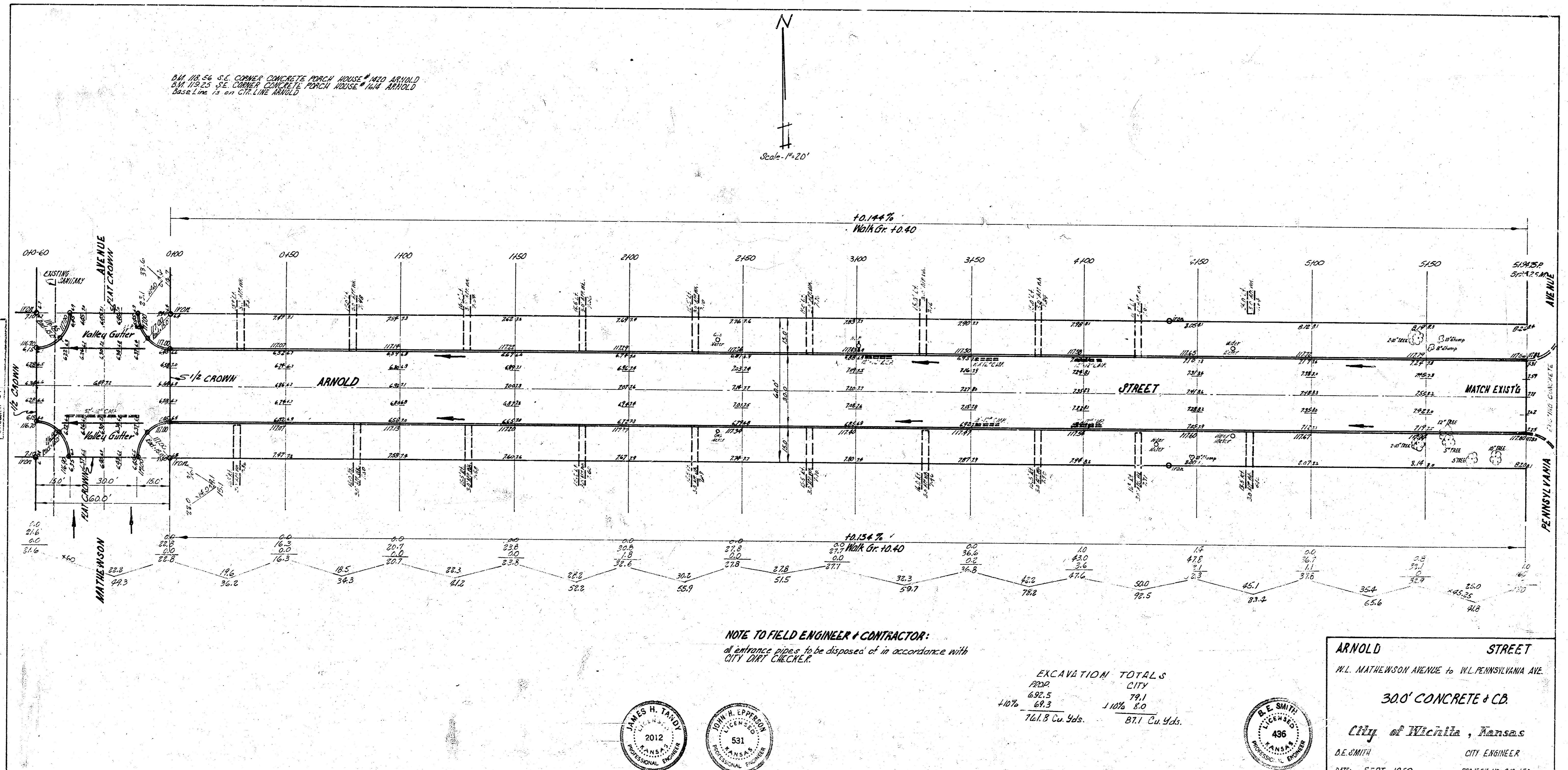


341 110.56 S.E. CORNER CONCRETE PORCH HOUSE # 110 ARNOLD  
 341 119.23 S.E. CORNER CONCRETE PORCH HOUSE # 114 ARNOLD  
 Base Line is on CH. LINE ARNOLD



110.56 S.E. CORNER CONCRETE PORCH HOUSE # 110 ARNOLD  
 119.23 S.E. CORNER CONCRETE PORCH HOUSE # 114 ARNOLD  
 Scale - 1" = 20'

**NOTE TO FIELD ENGINEER & CONTRACTOR:**  
 all entrance pipes to be disposed of in accordance with  
 CITY DIRT CHECKER.

EXCAVATION TOTALS	
PROP.	78.1
10%	69.3
<b>761.8 Cu Yds.</b>	<b>871 Cu Yds.</b>



**ARNOLD STREET**  
 W.L. MATHEWSON AVENUE to W.L. PENNSYLVANIA AVE.  
**300' CONCRETE & CB.**  
 City of Wichita, Kansas  
 D.E. SMITH CITY ENGINEER  
 DATE: SEPT. 1959 PROJECT NO. C18-150