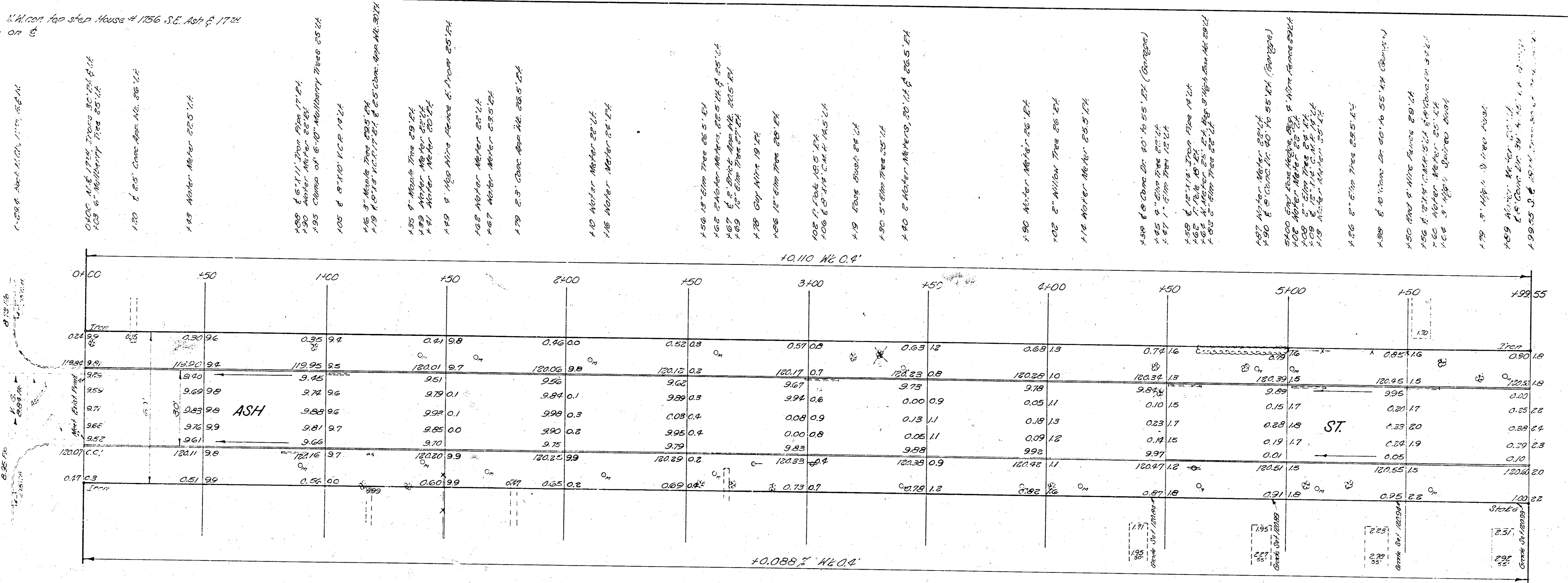


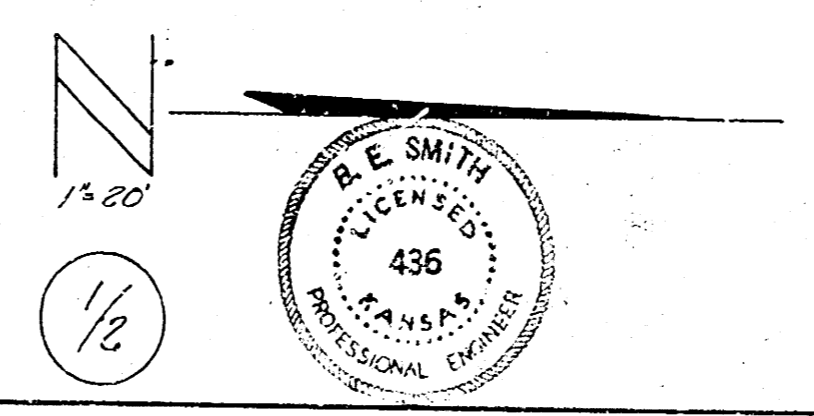
BM 12162 N.W. cor. top step House # 1756 S.E. Ash & 17th  
 Starting on 8

17TH  
 17TH

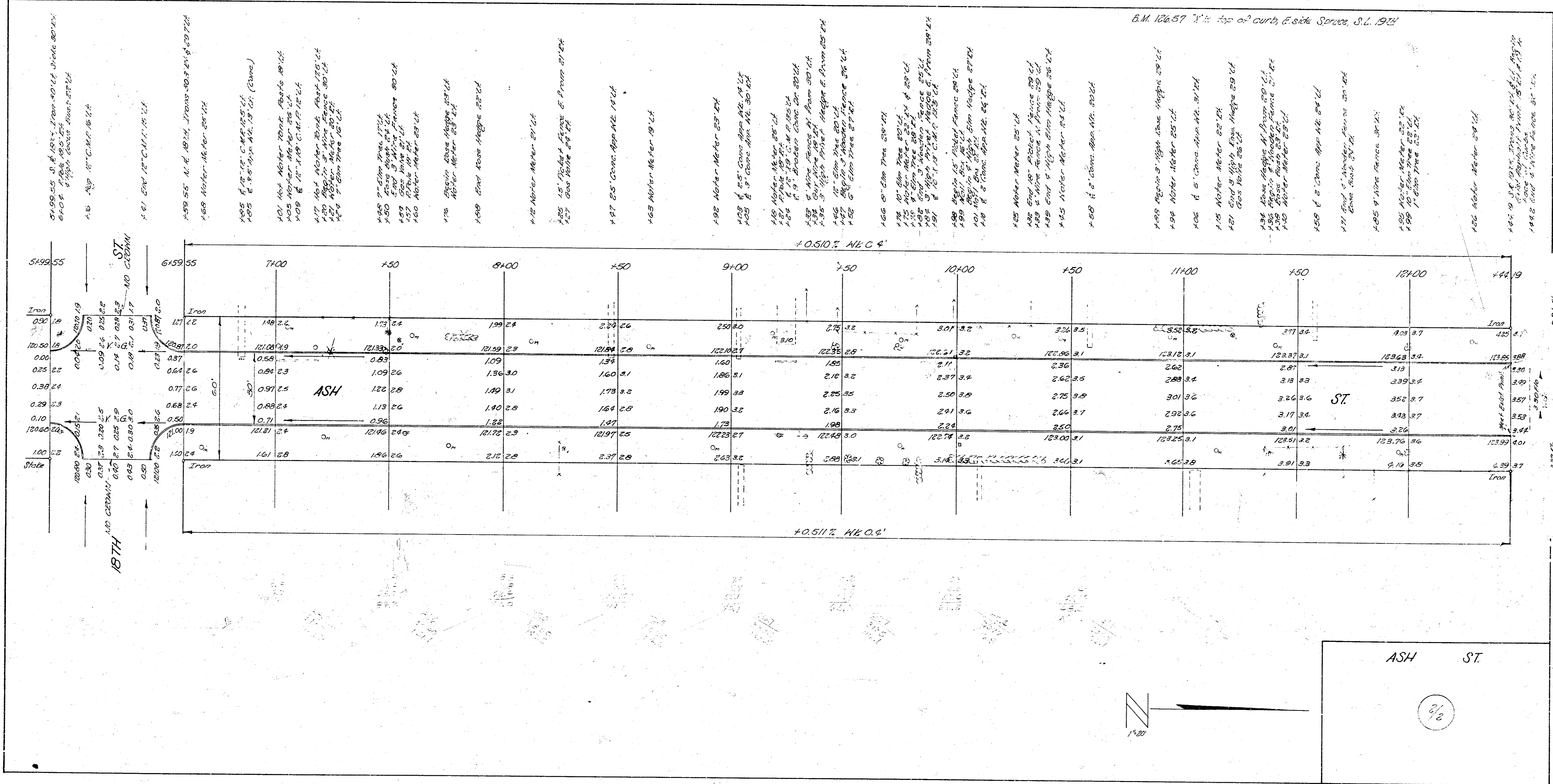


Surveyed by  
 B.E. Smith  
 Checked by  
 C.B. Smith

NOTE TO FIELD ENGINEER & CONTRACTOR:  
 All entrance pipes are to be placed on  
 owner's property. If owner does not  
 want the pipe, it is to be berled up  
 by the Street Department.



ASH ST  
 N.W. 17th St. to S.W. 30th St.  
 30' Conc. & Cb.  
 CITY OF WICHITA, KANSAS  
 B.E. SMITH  
 JUNE 1953  
 CITY ENGINEER  
 Proj. No. C-3-101



1914

1974

