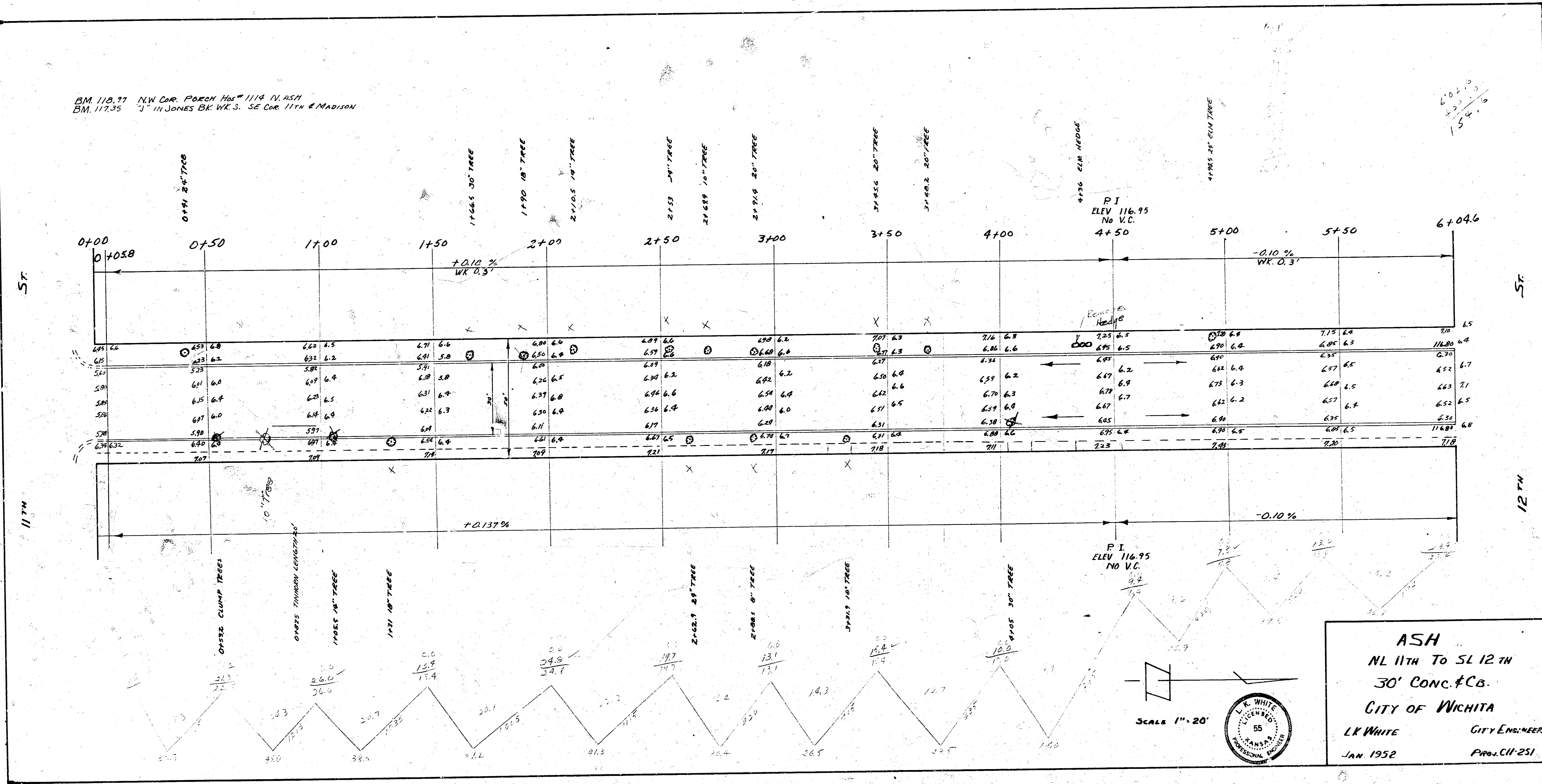
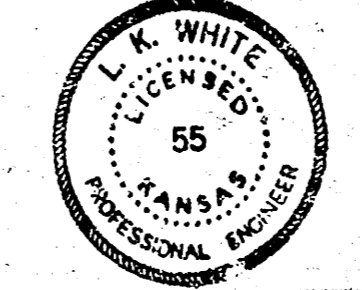


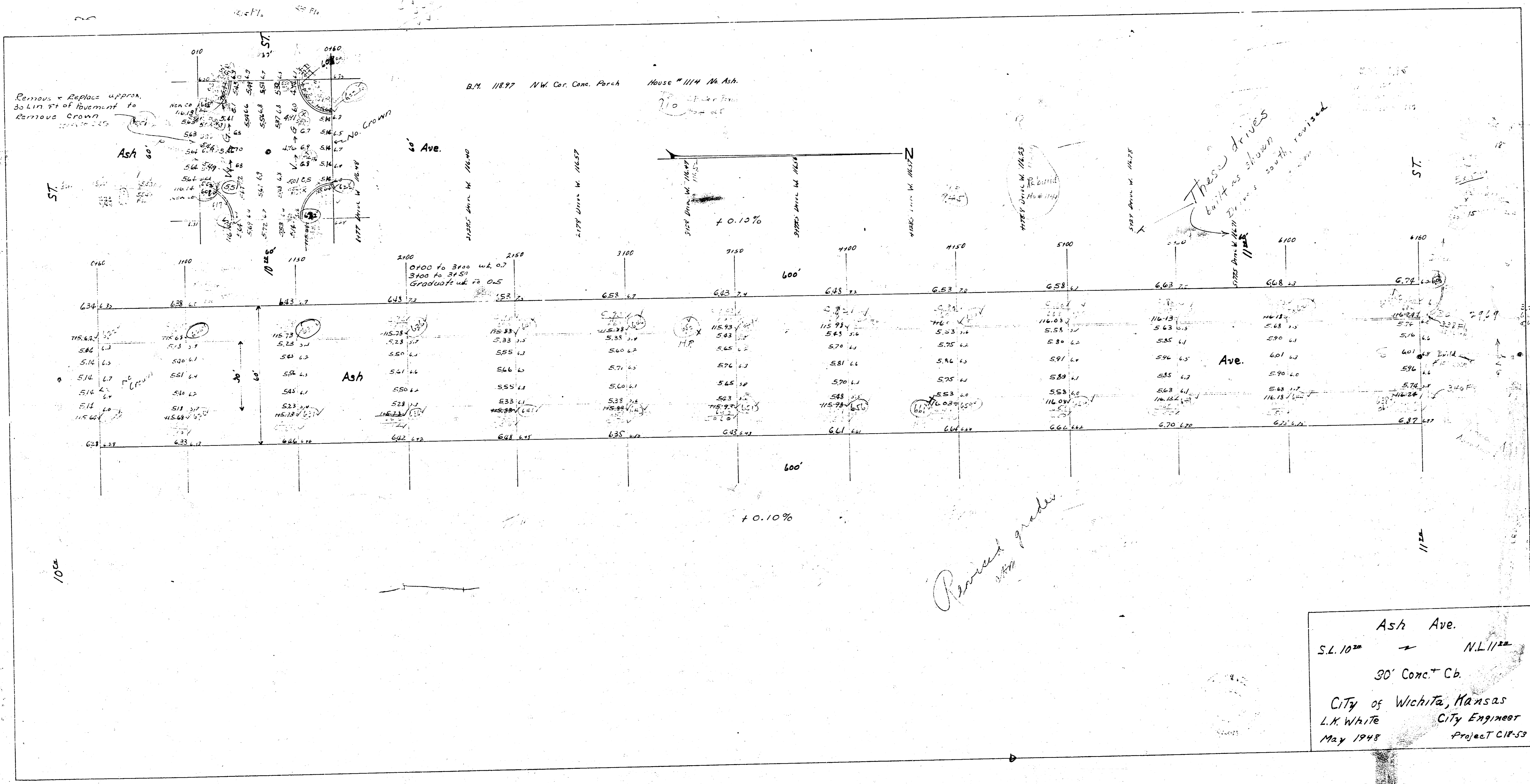
K-9

BM 118.77 NW Cor. Porech Hse # 1114 N. Ash
BM 117.35 "J" in Jones Br. Wks. SE Cor. 11th & Madison



ASH
 NL 11TH To SL 12 TH
 30' CONC. & CB.
 CITY OF WICHITA
 LK WHITE CITY ENGINEER
 JAN 1952 PROJ. CII-251





Ash Ave.
 S.L. 10th ← N.L. 11th
 30' Conc. Cb.
 City of Wichita, Kansas
 L.K. White City Engineer
 May 1948 Project C11-53

