

H-6

ck Elevations  
215 Soil

B.M. ~~CURB CLOSE ON WALK~~ 5.5-Dr. Hts. 2002 N. Grove 120.00

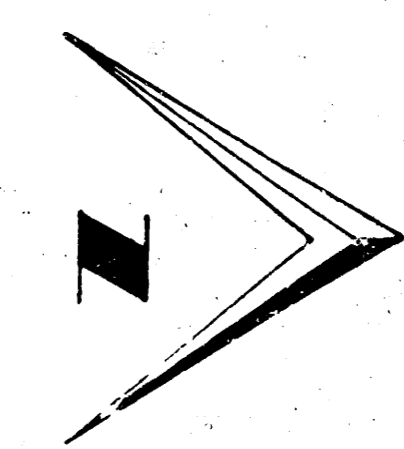
+3.9' E CONC. DR. 32" RT.

+8.9' E CONC. DR. 32" RT.

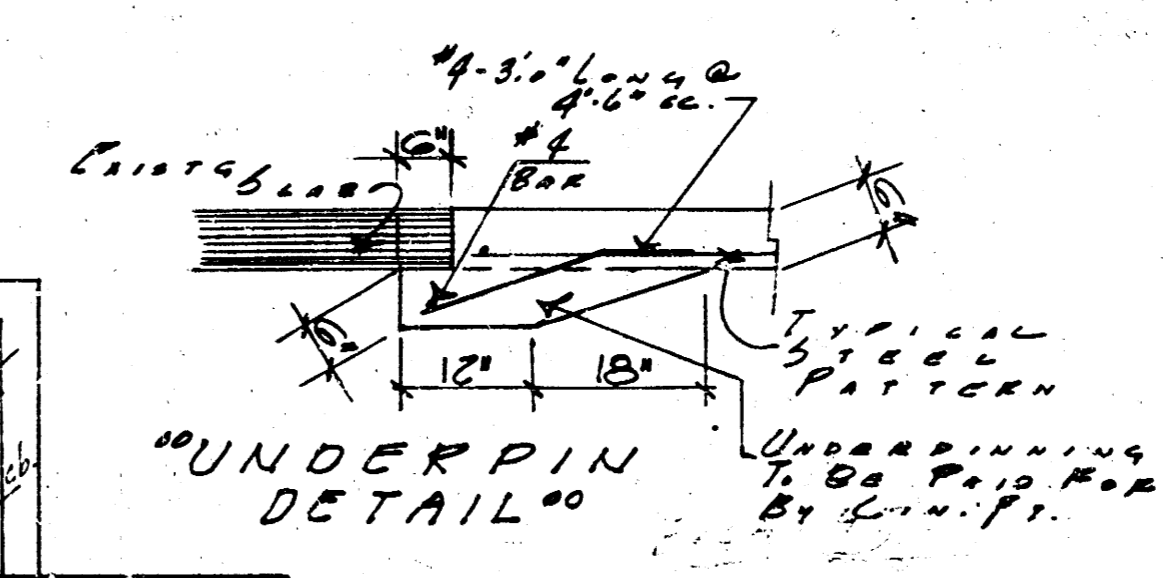
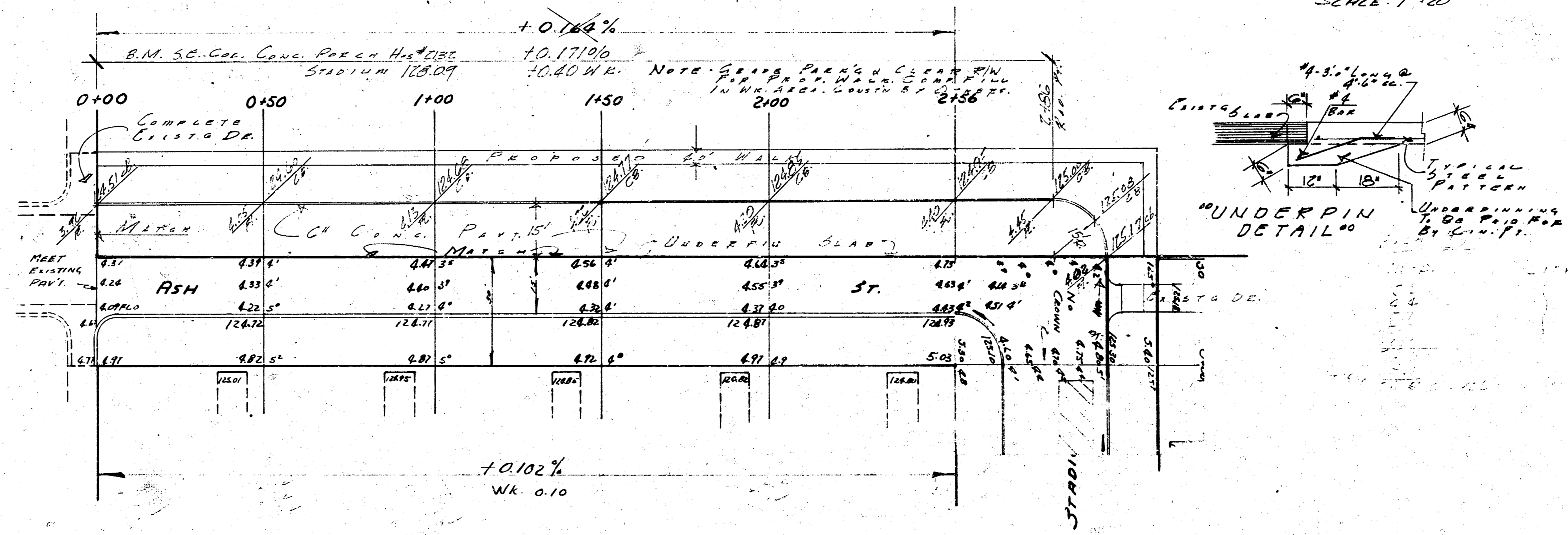
+3.9' E CONC. DR. 32" RT.

+8.9' E CONC. DR. 32" RT.

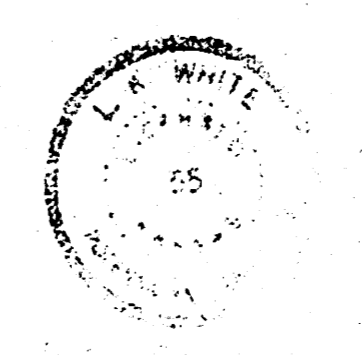
+3.9' E CONC. DR. 32" RT.



SCALE: 1"=20'



ASH E 1/2  
 SL. J. WALTER ROSS 2 ND ADDN. TO N. STANBY  
 15' CONC. F. C.B.  
 CITY OF WICHITA, KANSAS  
 L.K. WHITE CITY ENGINEER  
 JUNE 1952 PROJ. NO. C16-112

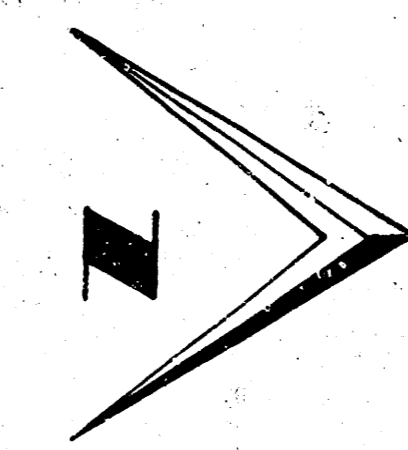


H-6

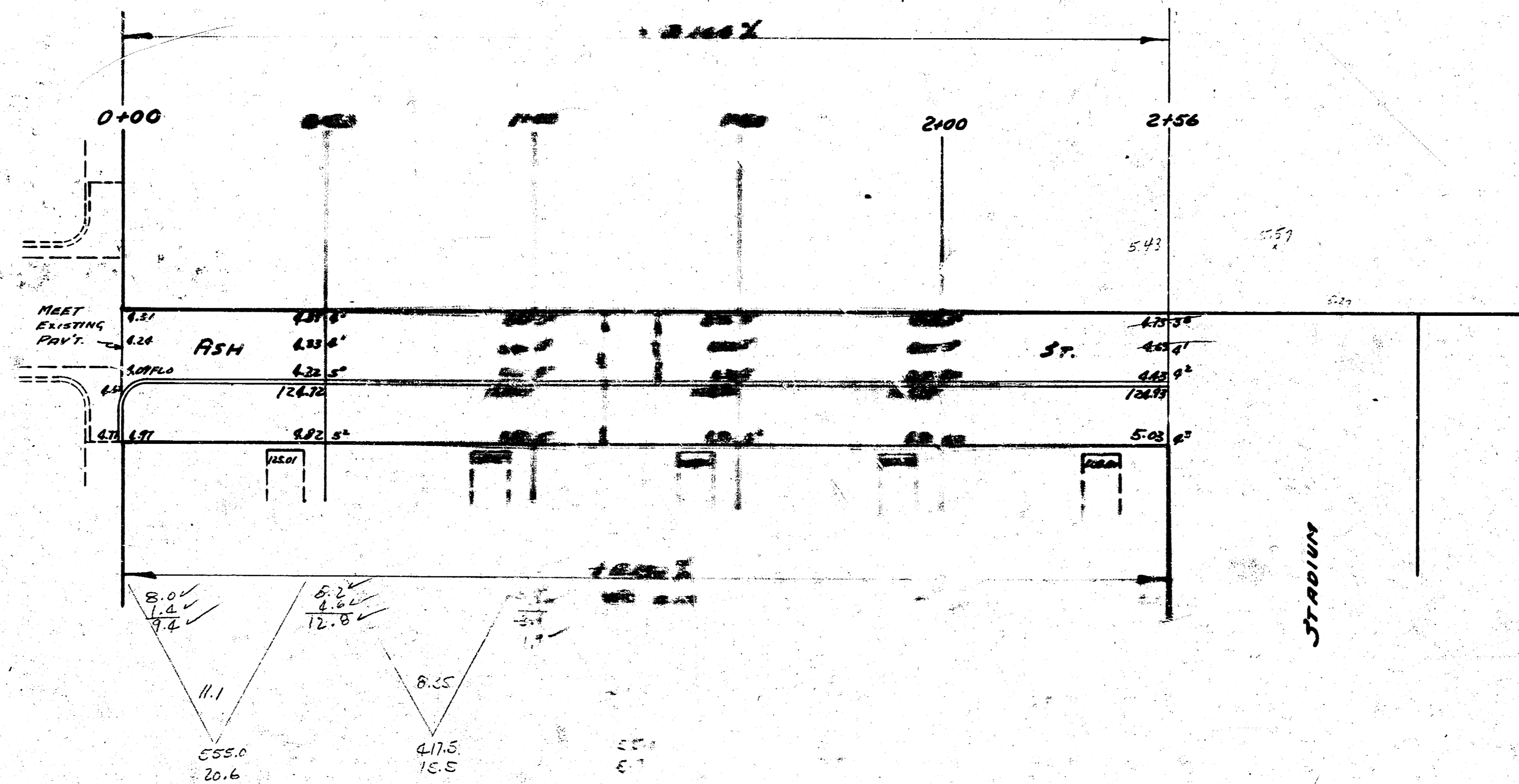
Ch. Elevation  
2-13 Soil

B.M. C<sup>1</sup> IN GLOBE ON WALK S.S. DR. 100' ±

TOP OF CONC. DR. 32' ET  
TOP OF CONC. DR. 32' ET  
TOP OF CONC. DR. 32' ET  
TOP OF CONC. DR. 32' ET  
TOP OF CONC. DR. 32' ET

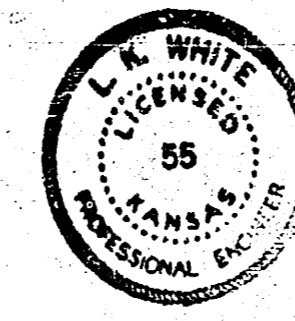


SCALE: 1" = 20'



EXCAVATION

DEEP.	CITY
5.2	
8.4	
5.7	
15.8	
20.6	
21.4	
110%	5.1
	36.6 CU. YDS



**ASH E 1/2**  
 SL. J. WALTER ROSS 2<sup>ND</sup> ADDN. TO NU STAMPA  
 15' CONC. & CO.  
 CITY OF WICHITA, KANSAS  
 L.K. WHITE CITY ENGINEER  
 JUNE 1952 PROJ. NO. CA-10