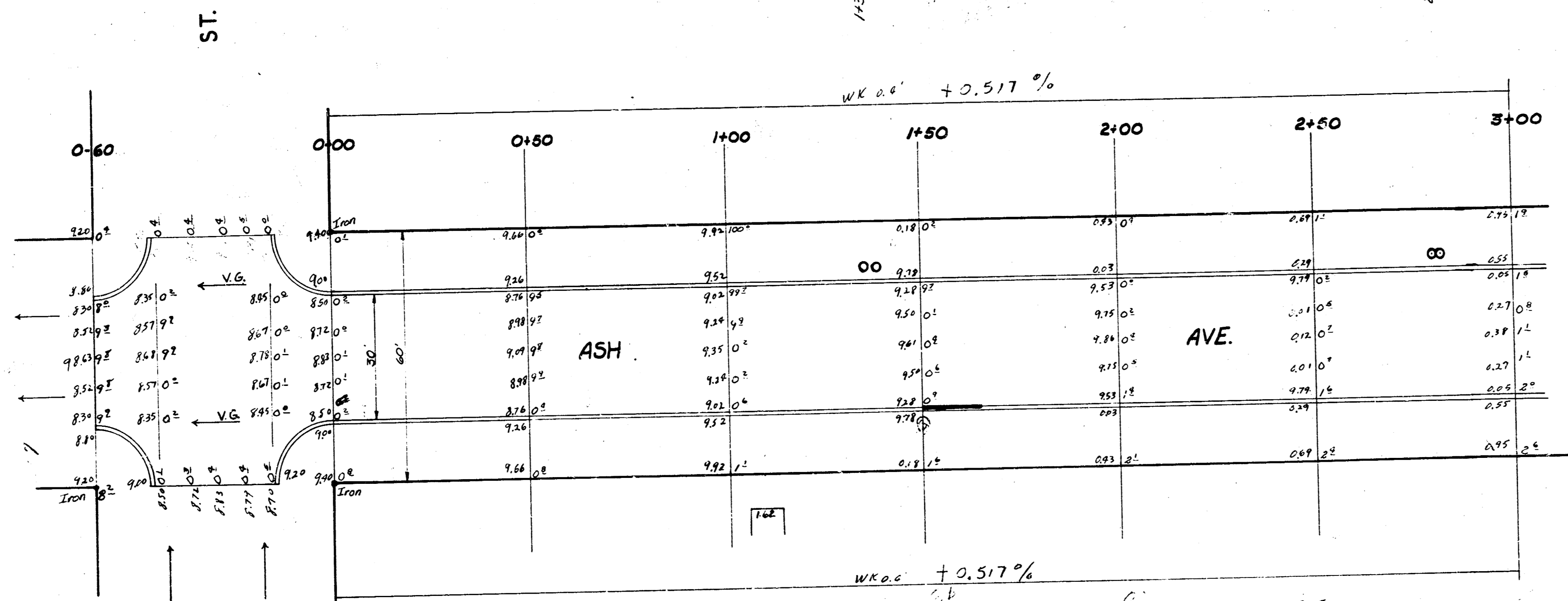
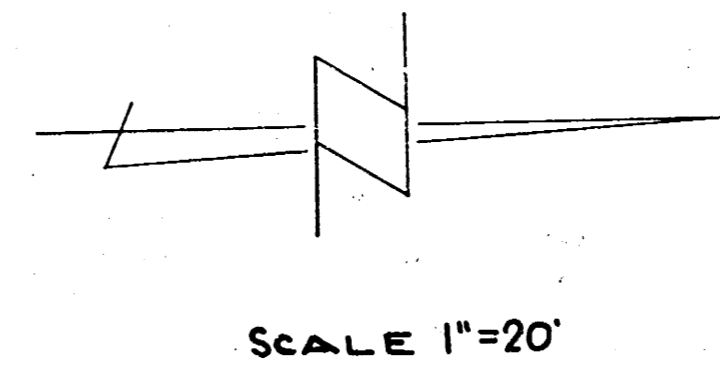


BM: 102.68 "x" 3'E. of W end NW Wing Bridge Harry # Canal
 BM: 104.97 SW cor. conc. porch Ho. # 1616 S. Ash.



Station Survey 4.10 188 15 27.47
 188 15 27.47
 188 15 27.47

1+50 2.1 Poles 19.4t

2+50 2.1 Poles 19.4t

185.4
 33.4
 43.8
 11.0
 83.0
 1.1
 373.9

ST.

FUNSTON

1+00'S & C&C OR 30' RT

1+50 2.1 Poles 19.4t

1
2

ASH AVE.
 S.L.FUNSTON ST. TO N.L.OSIE AVE.
 30' Conc. & C b.
 CITY OF WICHITA, KANSAS
 L.K.WHITE CITY ENGINEER
 OCT. 1951 PROJ. NO. C11-156



