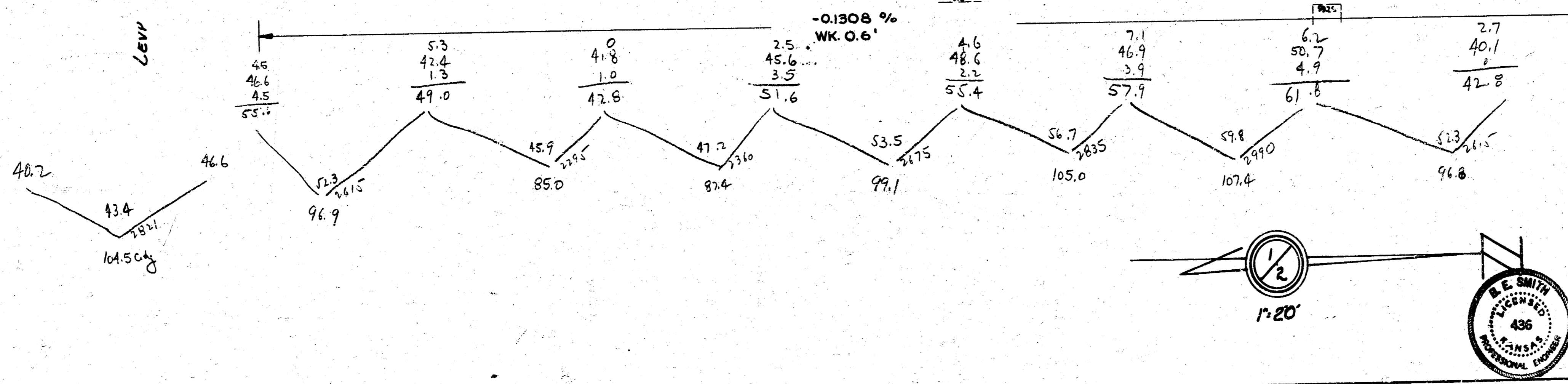
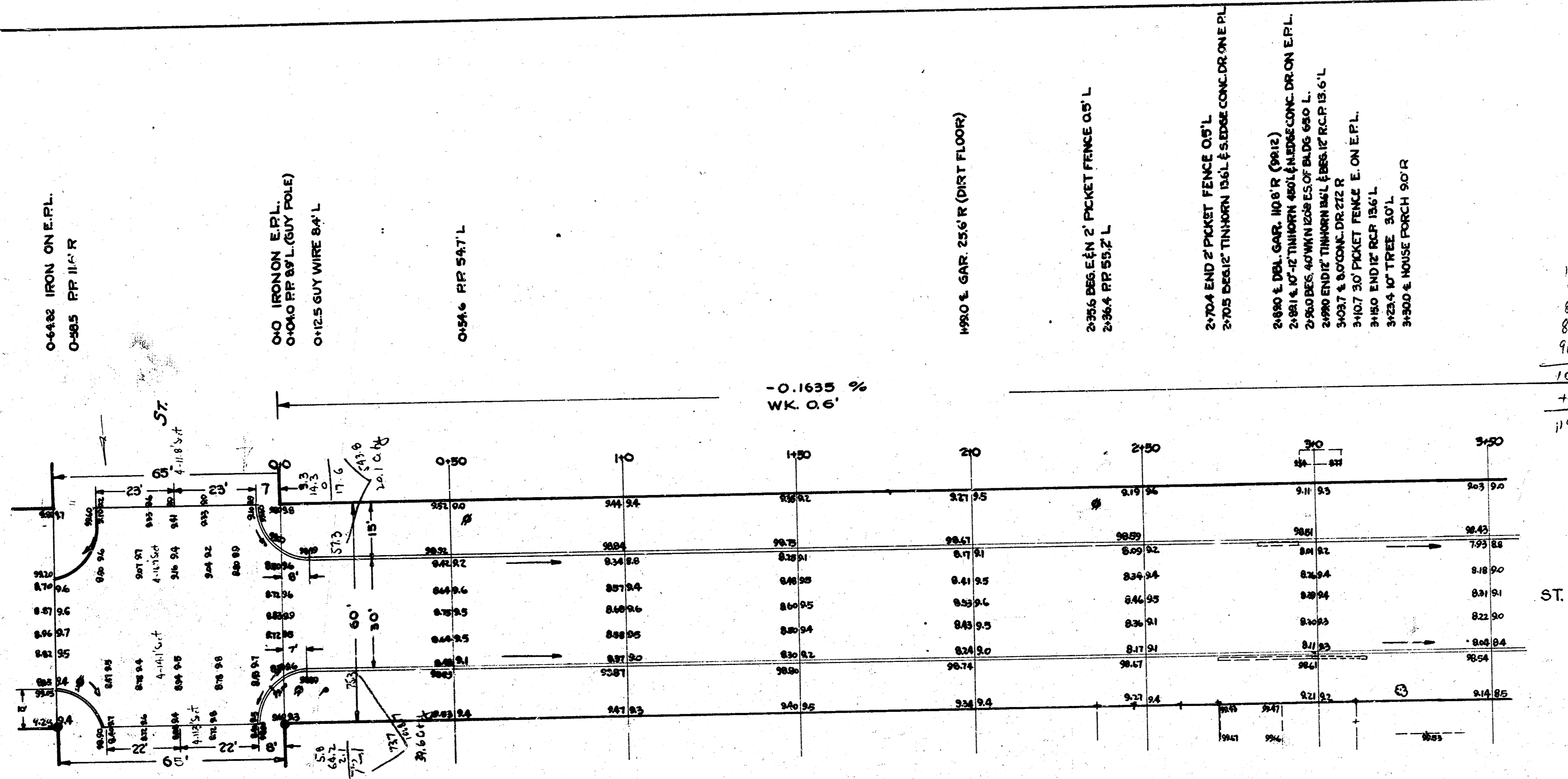


B.M. 9945 9" IN 1943 W.L. SWAN N.C.B. LEVY.
 B.M. 10037 N. END CONC. DOORSTEP W.S. HOUSE #2002 S. ASH
 O 10051 S.E. COR. PORCH HOUSE #1897 S. ASH

NOTE:
 CHAINED N. ON E.P.L.

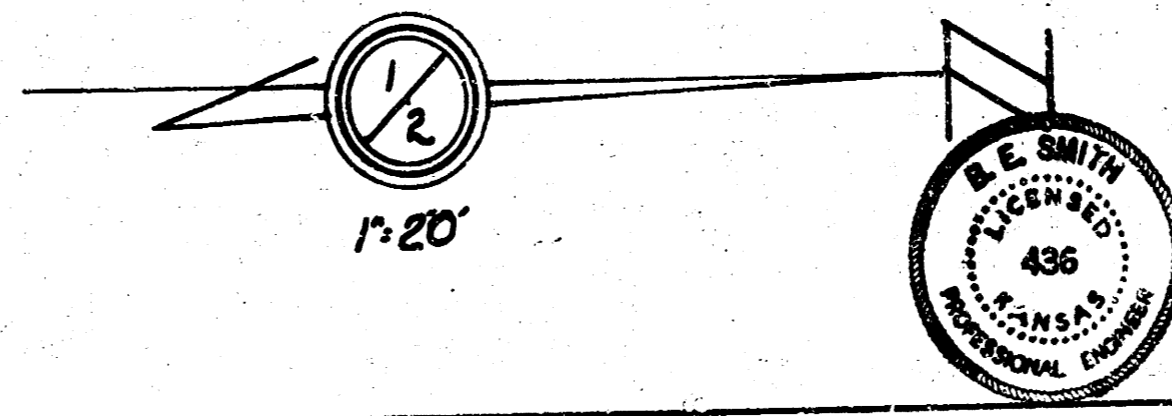
NOTE TO CONTRACTOR & FIELD ENGINEER:
 PLACE ENTRANCE PIPE ON OWNERS
 PROPERTY STREET DEPT. WILL
 REMOVE THIS PIPE AT THE REQUEST
 OF THE PROPERTY OWNER.



P100	C100
171.0	104.5
88.4	39.6
98.0	20.1
88.1	
73.7	14.2
76.8	7.0%
107.2	
105.0	180.6
99.1	
87.4	
85.0	
96.9	
1086.8	
7.0%	
1185.5	

BY: [Signature]
 CHECKED: [Signature]

ASH ST.
 (New Mt. Vernon) TO ALL SKINNER
 S.L. LEVY TO 30' CONC. & C.B.
 CITY OF WICHITA, KANSAS
 B.E. SMITH CITY ENGINEER
 Jan. 22, 1953 Proj. No. 512-218



3486 S END 30' W 180' 259' R
 3775 GUY WIRE 845' L
 3810 GUY WIRE 845' L

 3995 RP 845' L
 4040 BEEL'R RCP 466' L
 4128 END 12' RCP 466' L

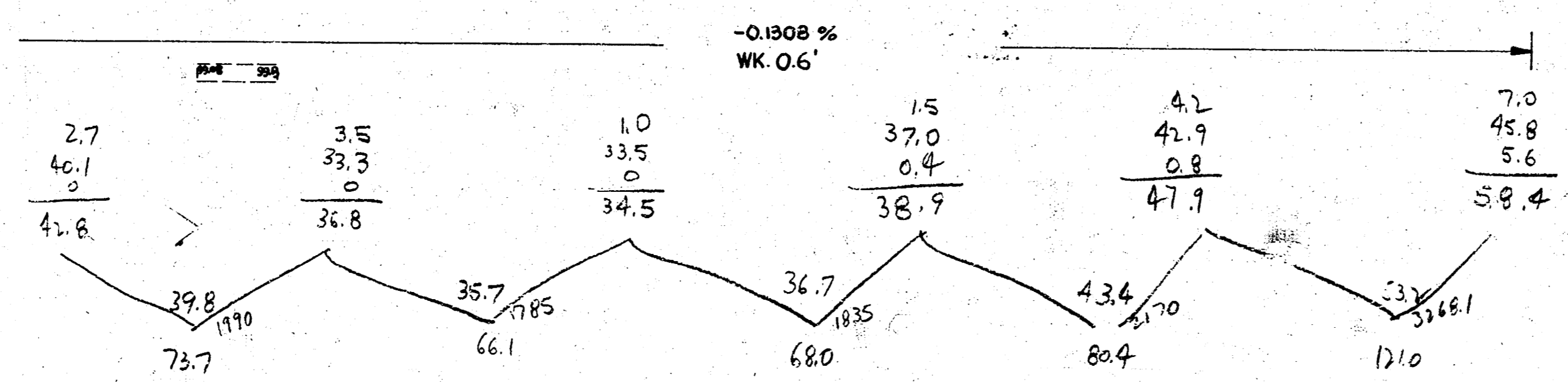
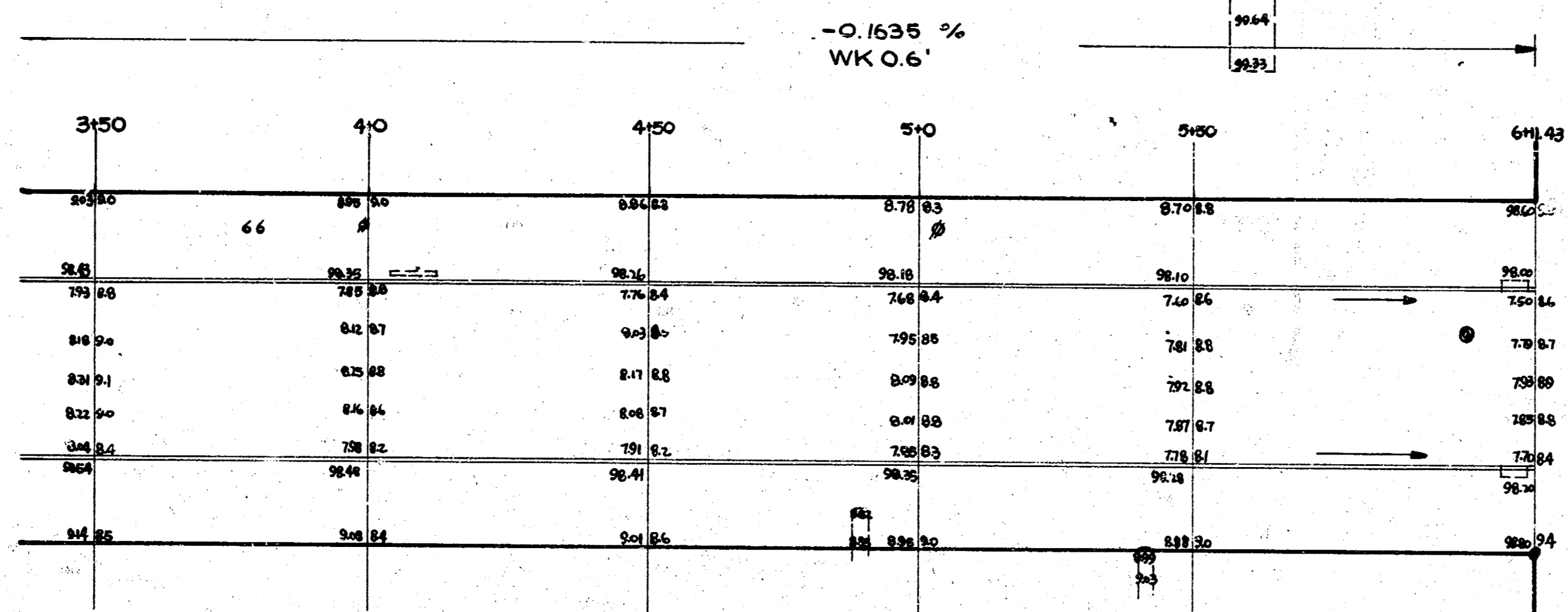
 4900 S APP WKE 65' L
 5040 RP 845' L

 5422 S 85' APP WKE 60' L

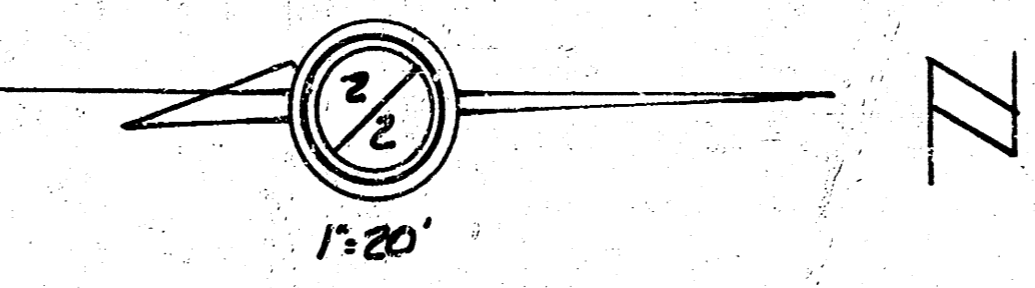
 5608 S' CONC DR 85' L & GAR 110.5' L

 5990 MH 375' L
 6075 S 205' CA 105' L & 205' CB 432' L
 6140 IRON ON REPL.

ASH



ST
 INTERSECTION SHOWN ON
 ASH ST. SKINNEE ST. FUNSTON
 ST
 SKINNEE



ASH ST.