

B.M. 100.47 N.W. Cor. Conc. Porch No. # 2110 Hudson
 B.M. 98.42 6" in Globe c. of W.P. S. S.E. Cor. Ash & Hudson
 B.M. 101.27 Top NW. Iron Cor. First No. # 2102 S. Ash
 B.M. 102.15 S.W. Cor. Conc. Porch Slab, No. # 2002 S. Ash & Levy

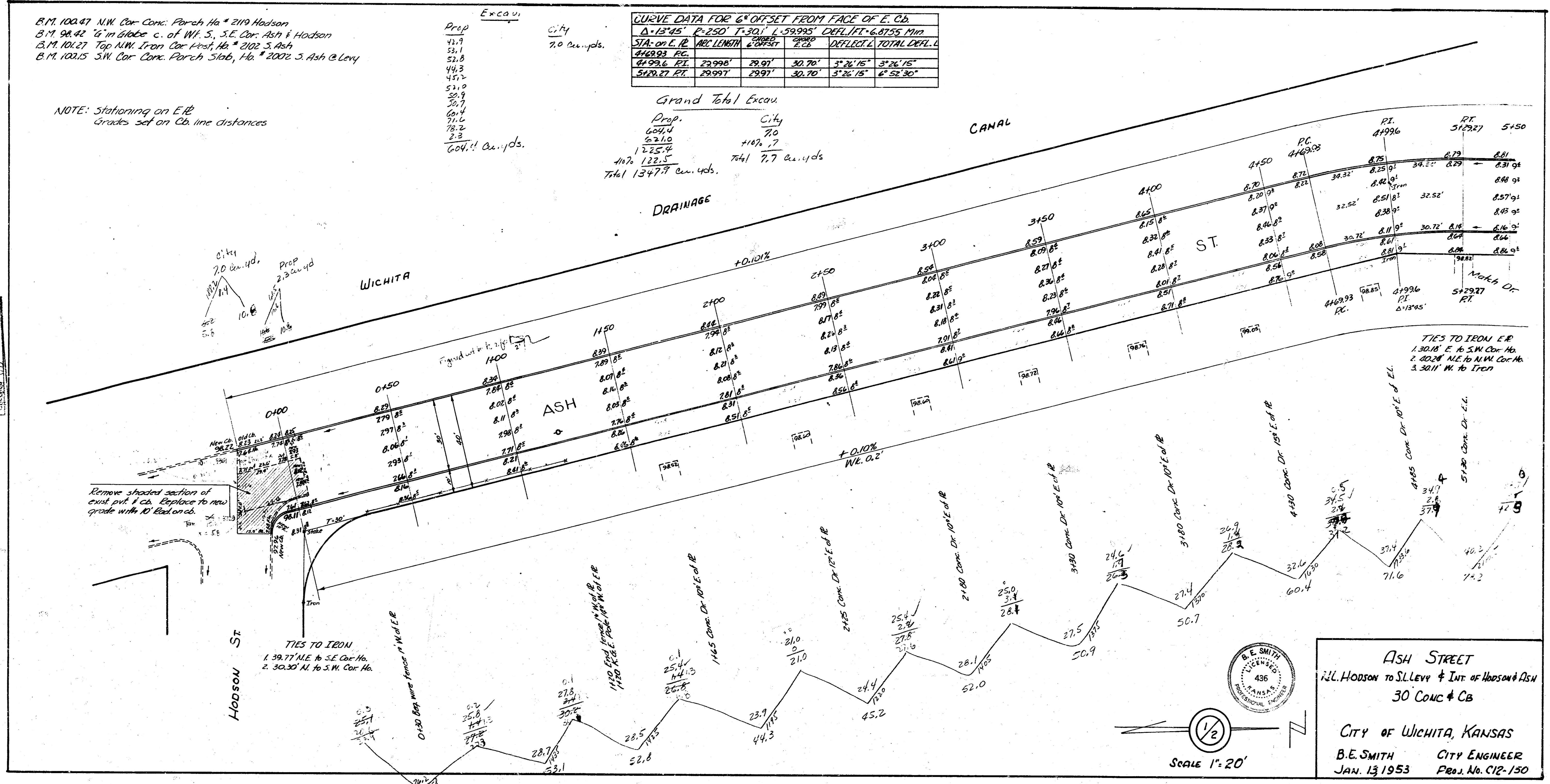
Prop.	City
43.9	7.0 cu. yds.
53.1	
52.8	
44.3	
45.2	
53.0	
50.9	
50.7	
60.4	
71.6	
78.2	
2.3	
604.1	cu. yds.

CURVE DATA FOR 6" OFFSET FROM FACE OF E. CB.					
$\Delta = 13'45"$ $P = 250'$ $T = 30'$ $L = 59.995'$ $DEFL./PT = 6.8755$ $MID.$					
STA. on E. LB	ARC LENGTH	CHORD	DEFL.	OFFSET	TOTAL DEFL.
4199.6 PI.	29.98'	29.97'	30.70'	3'26"15"	3'26"15"
5120.27 PT.	29.97'	29.97'	30.70'	3'26"15"	6'52"30"

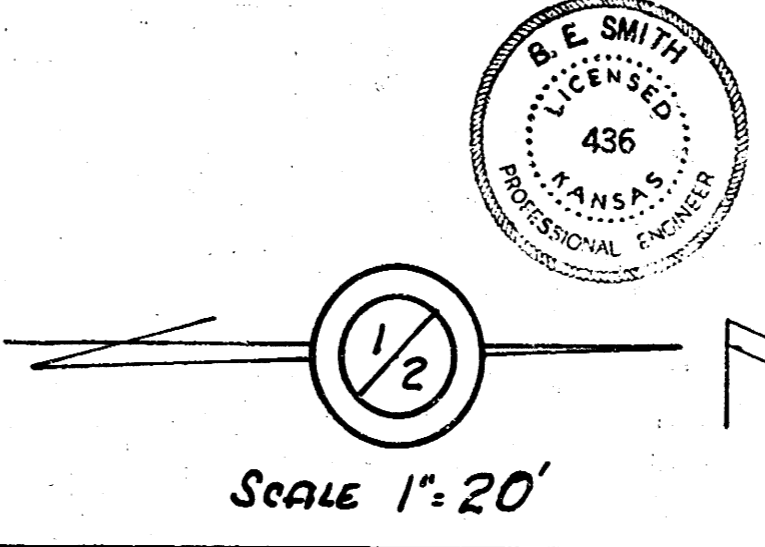
Grand Total Excav
 Prop. City
 604.1 7.0
 122.5 107.7
 Total 1347.7 cu. yds.

NOTE: Stationing on E.L.B.
 Grades set on Ch. line distances

Summary of Work
 Plan
 City Engineer
 B.E. Smith



ASH STREET
 ALL HUDSON TO S. LEVY & INT. OF HUDSON & ASH
 30 CONC. & CG
 CITY OF WICHITA, KANSAS
 B.E. SMITH CITY ENGINEER
 JAN. 13 1953 PROJ. No. C12-150



SCALE 1" = 20'

