

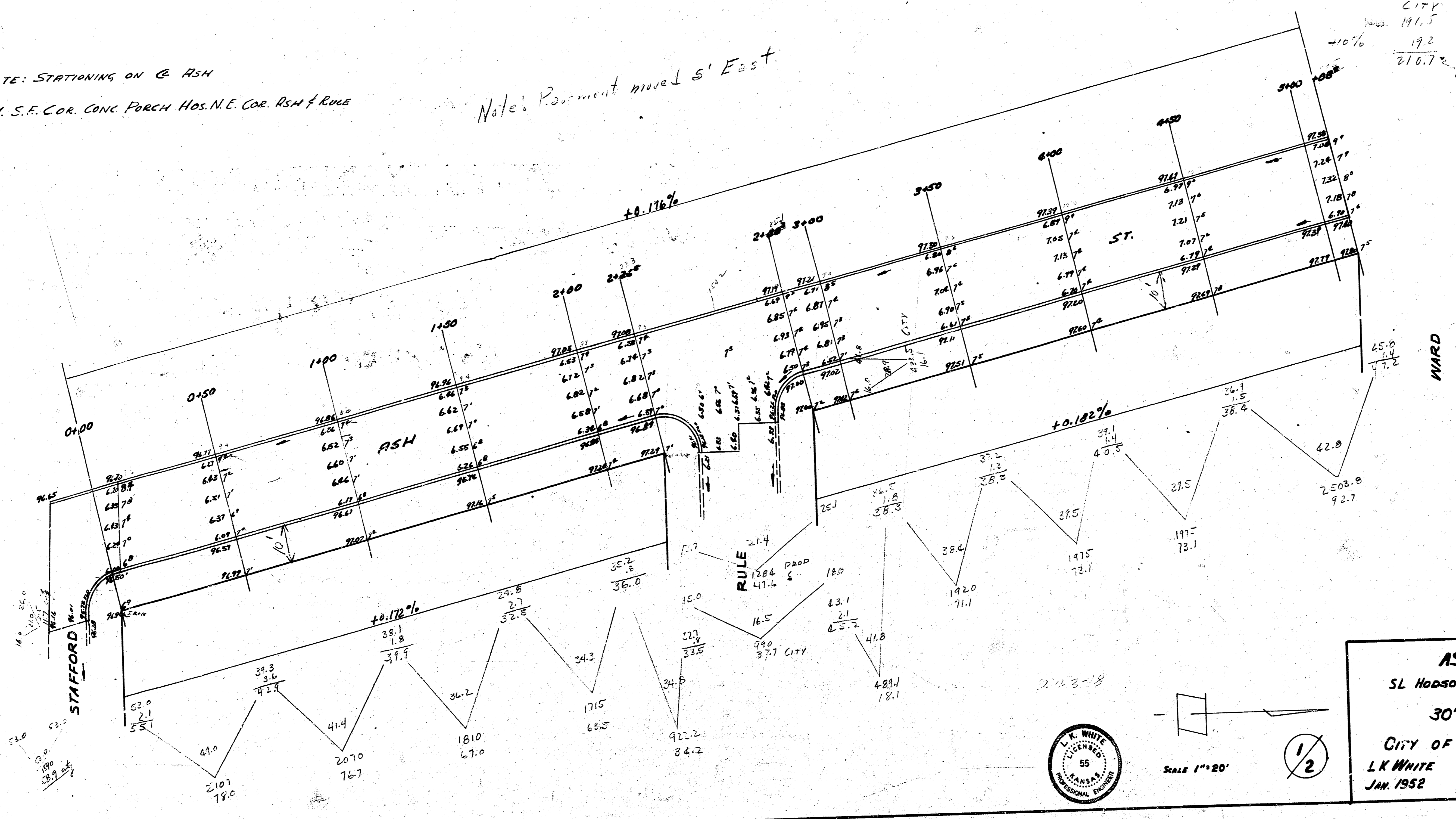
FI-2

NOTE: STATIONING ON C ASH
B.M. S.F. COR. CONC. PORCH HOS. N.E. COR. ASH & RULE

Note: Pavement moved S' East.

EXCAVATION

CITY	PROD
191.5	1355.6
192	32.4
216.7	302.2



ASH
 SL HOADSON TO N.E. STAFFORD
 30' CONC & CO.
 CITY OF WICHITA
 L.K. WHITE CITY ENGINEER
 JAN. 1952 PROJ. C11-241



SCALE 1"=20'



NOTE: STATIONING ON E ASH

B.M. 6 IN GLOBE N END N.E. RET. ASH & HODSON.

