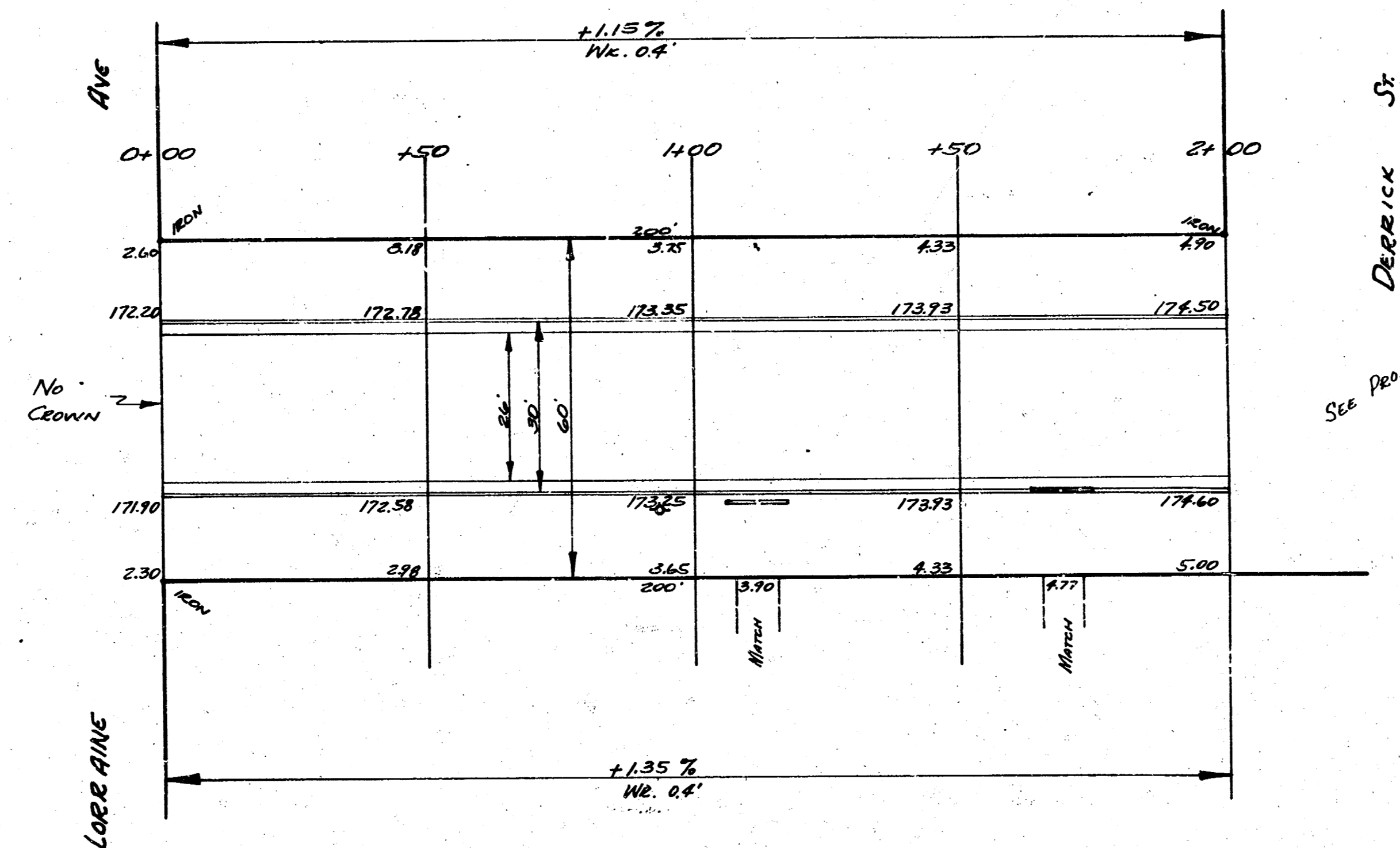


B.M. 174.48 N.E. Cor. 1st Cons. Strip No. W. of 3117 E. Arlene
 B.M. 179.08 S.W. Cor. 1st Cons. Strip No. # 3108 E. 24th

CHAIN. E. ON S.P.L.

0.932 P. ARE 12' LT.
 1.417 E. 8' ON 0.14, 12' R.C.P. 36" LT.
 1.465 E. 8' ON 0.14, 12' R.C.P. 36" LT.

207.4
 207.7
 207.9
 207.9
 207.9
 207.4



NOTE TO CONTRACTOR & FIELD ENGINEER:
 ALL ENTRANCE PIPES TO BE REMOVED AND PLACED
 ON OWNER'S PROPERTY. STREET DEPT. WILL
 REMOVE SAME IF DESIRED.



ARLENE AVE.
 E.L. LORRAINE TO E.L. DERRICK
 26-2-30 AC

CITY OF WICHITA, KANSAS
 B.E. SMITH CITY ENGINEER
 JAN. 29, 1953 PROJ. NO. C12-247

1"=20'