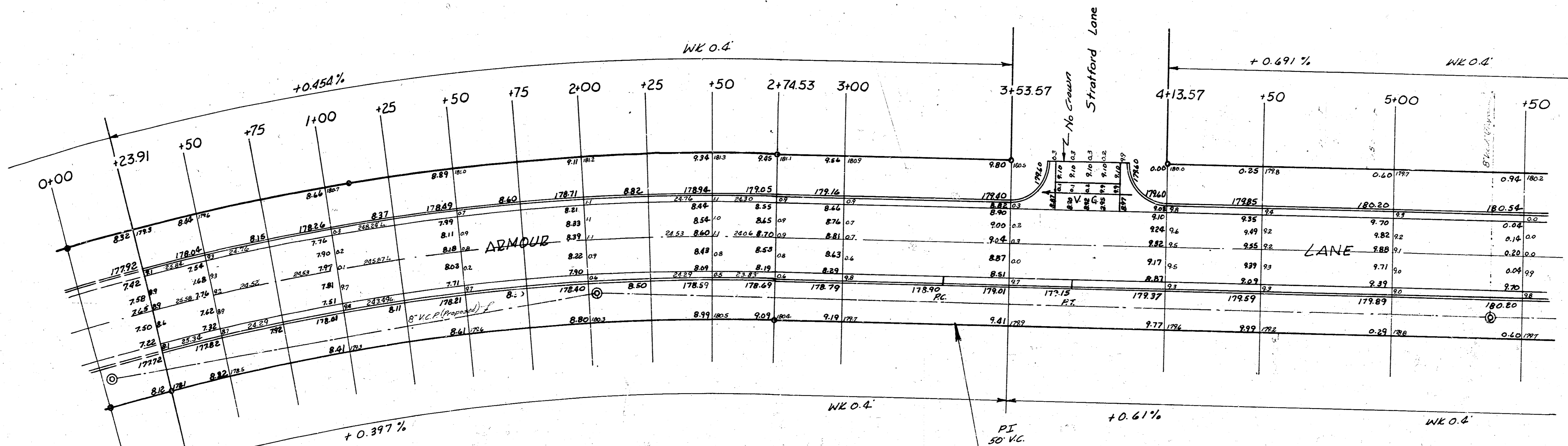
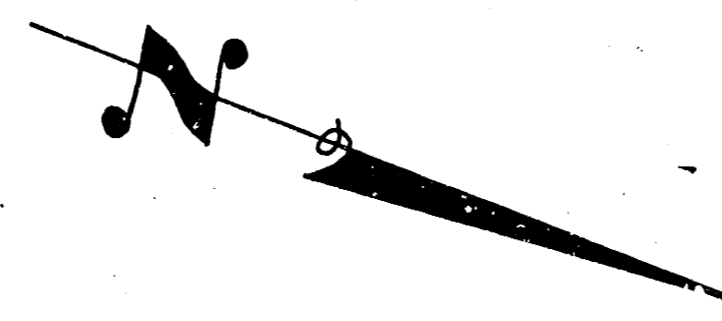


BM = 177.18 Spk. stn. in 8' Elm approx. 40' E & 30' S of NE cor. 9th & Armour.
 Stationing on W. Prop. Line.



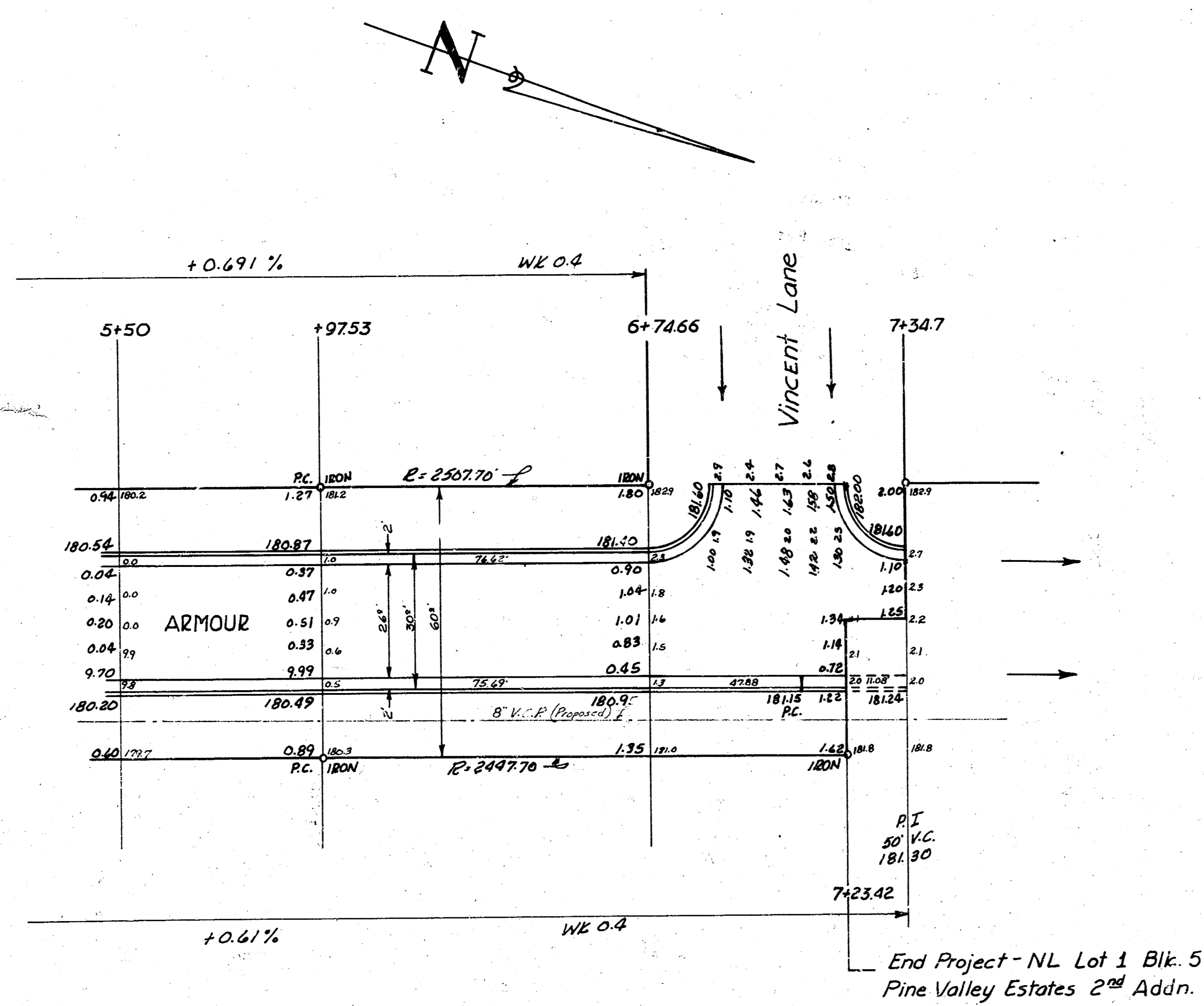
Survey Plotted by
 Plain Greene
 7/19/54

NL Lot 4 - Blk 5 Pine Valley 1st & 2nd
 Begin Project I

NOTE TO FIELD ENGINEER: If drives are constructed on S.S. Armour, check settlement of sewer ditch to determine if extra steel will be needed in the drives.



ARMOUR LANE
 NL Lot 4 - Blk 5 - to - NL Lot 1 Blk 5
 Pine Valley Est. 1st - to - Pine Valley Est. 2nd
 26-2-30 AC
 CITY OF WICHITA, KANSAS
 B.E. SMITH CITY ENGINEER
 JULY 1954 PROJ NO C16-86



CURVE DATA: Sta. 0+23.91 to 7+74.53 - Sta on W/R
 R=1574.47 Δ=9°04'06" Δ=1.0917/H arc. 9' offset W/R.

STATION	Deflection Angle	Total Deflection	Chord Length 6" offset W/R	Chord Length 6" offset E/W
0+23.91				
+50	0° 28' 19"	0° 28' 19"	25.94	25.25
+75	0° 27' 08"	0° 55' 27"	24.85	24.18
+100	0° 27' 08"	1° 22' 35"	24.85	24.18
+125	0° 27' 08"	1° 49' 43"	24.85	24.18
+150	0° 27' 08"	2° 16' 51"	24.85	24.18
+175	0° 27' 08"	2° 44' 59"	24.85	24.18
2+00	0° 27' 08"	3° 11' 07"	24.85	24.18
+25	0° 27' 08"	3° 38' 15"	24.85	24.18
+50	0° 27' 08"	4° 05' 23"	24.85	24.18
+74.53	0° 26' 38"	4° 32' 01"	24.37	23.75

CURVE DATA: Sta. 5+97.53 to 7+23.42 - Sta on W/R
 R=2498.70 Defl = 0.6879/H arc. 9' offset W/R.

Station	Deflection Angle	Total Deflection	Chord Length 6" offset W/R	Chord Length 6" offset E/W
5+97.53				
6+50	0° 35' 58"	0° 35' 58"	52.27	51.39
6+74.66	0° 16' 58"	0° 52' 56"	24.58	24.17
7+23.42	0° 33' 25"	1° 26' 17"	41.76	41.76

ARMOUR LANE C16-86
 Sheet 2 of 2.