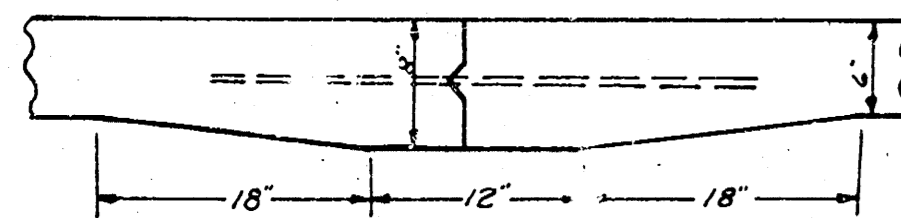


ARMOUR DRIVE
SL Cresthill to SL 9th
Sheet 2 of 2.

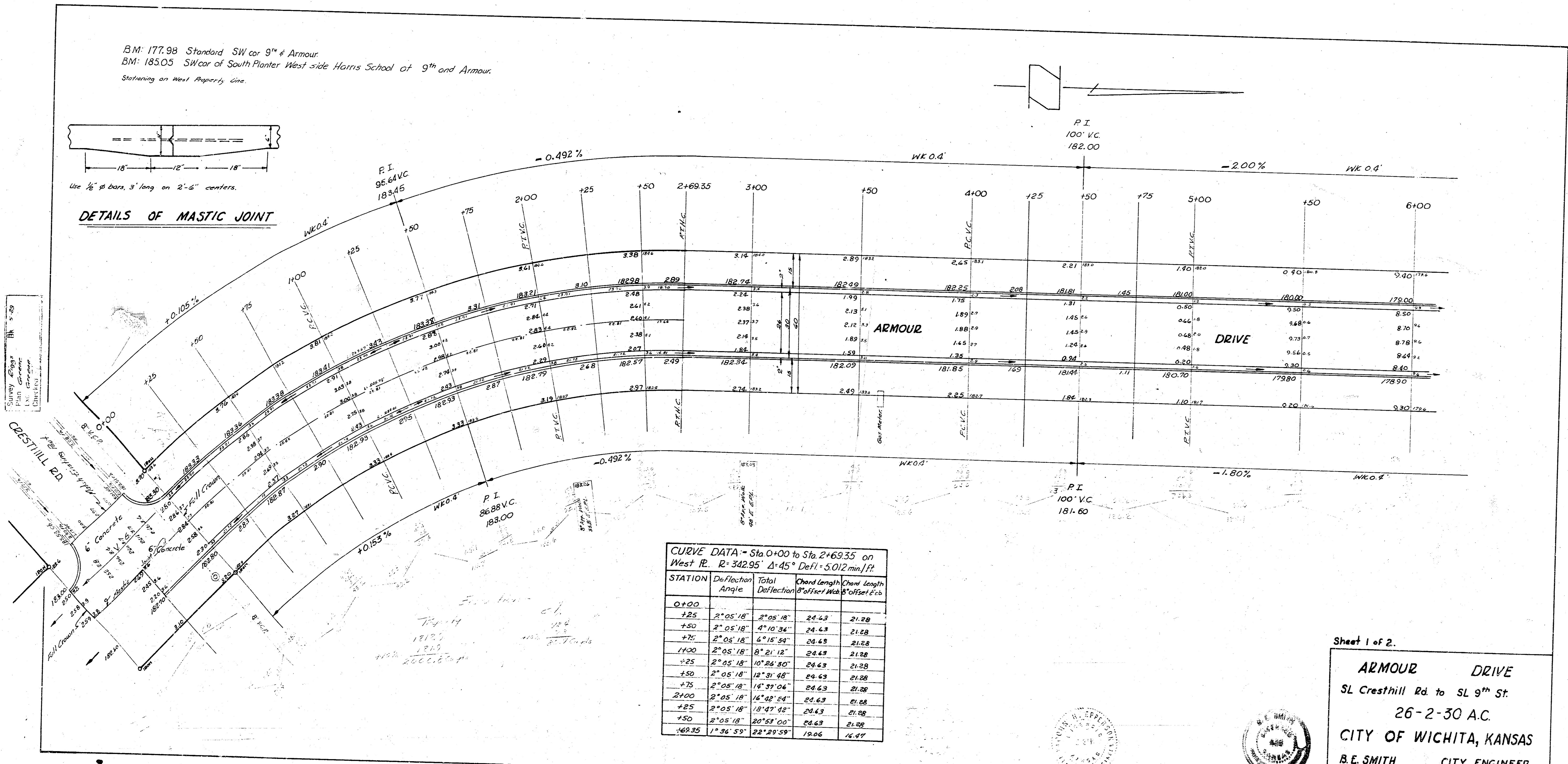
PROJ NO. C17-93

B.M. 177.98 Standard SW cor 9th & Armour.
 B.M. 185.05 SW cor of South Plaster West side Harris School at 9th and Armour.
 Stationing on West Property line.



Use 1/2" bars, 3' long on 2'-6" centers.

DETAILS OF MASTIC JOINT



CURVE DATA - Sta 0+00 to Sta. 2+69.35 on West R. R. $R = 342.95'$ $\Delta = 45^\circ$ Defl. = 5.012 min./ft.

STATION	Deflection Angle	Total Deflection	Chord length	Chord length
			Offset	Offset
0+00				
+25	2° 05' 18"	2° 05' 18"	24.43	21.28
+50	2° 05' 18"	4° 10' 36"	24.43	21.28
+75	2° 05' 18"	6° 15' 54"	24.43	21.28
+100	2° 05' 18"	8° 21' 12"	24.43	21.28
+125	2° 05' 18"	10° 26' 30"	24.43	21.28
+150	2° 05' 18"	12° 31' 48"	24.43	21.28
+175	2° 05' 18"	14° 37' 06"	24.43	21.28
+200	2° 05' 18"	16° 42' 24"	24.43	21.28
+225	2° 05' 18"	18° 47' 42"	24.43	21.28
+250	2° 05' 18"	20° 53' 00"	24.43	21.28
+269.35	1° 36' 59"	22° 29' 59"	19.66	16.97

Sheet 1 of 2.
ARMOUR DRIVE
 SL Cresthill Rd. to SL 9th St.
 26-2-30 A.C.
 CITY OF WICHITA, KANSAS
 B. E. SMITH CITY ENGINEER
 PROJ. NO. C17-93

