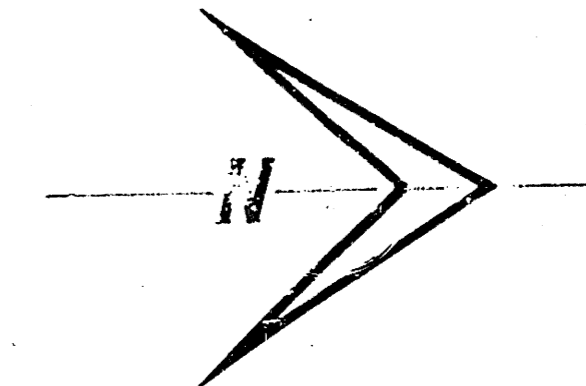
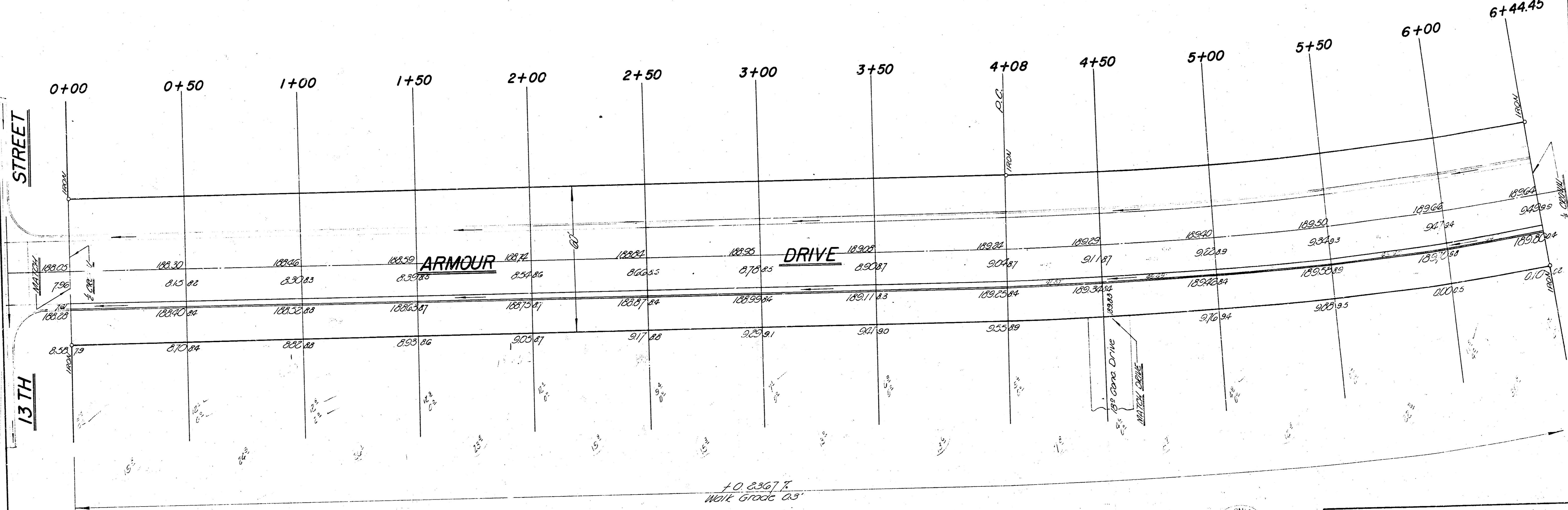


B.M. 19163 11' on South curb 14th St & 8' W of N.E. ARMOUR  
 B.M. 18938 N.E. Cor. Stone Monument, N.E. Cor. Armour & 13th St  
 Baseline & Stationing on East Property Line.



STREET 13TH



+D. 8367 K.  
 WALK GRADE 2.5'



EXCAVATION	
Property	City
13440	3707
1344	371
14784	4078



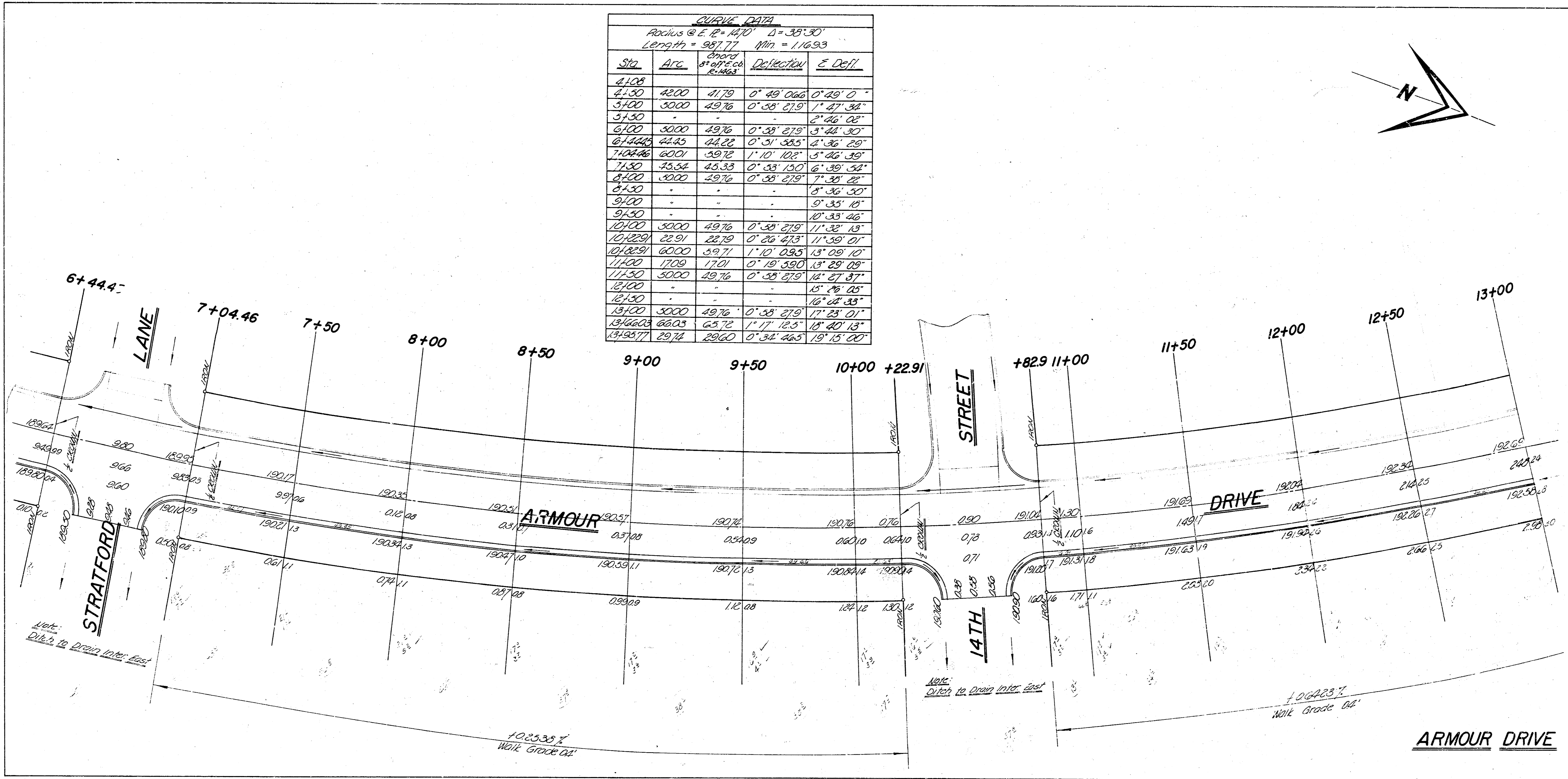
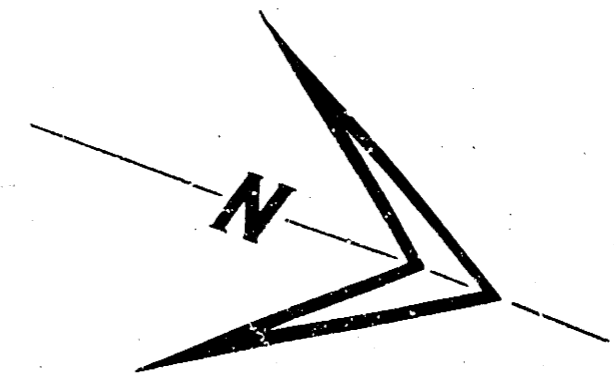
**ARMOUR DRIVE**  
 N.L. 13TH ST TO N.L. LOT 7, BLK 2, MC EWEN 8  
**13'-2'-15' ASPH. CON.**  
 PAVE EAST ONE-HALF  
 CITY OF WICHITA, KANSAS  
 B.E. SMITH CITY ENGINEER  
 DATE: JULY 2002 PROJ. NO. C12-28

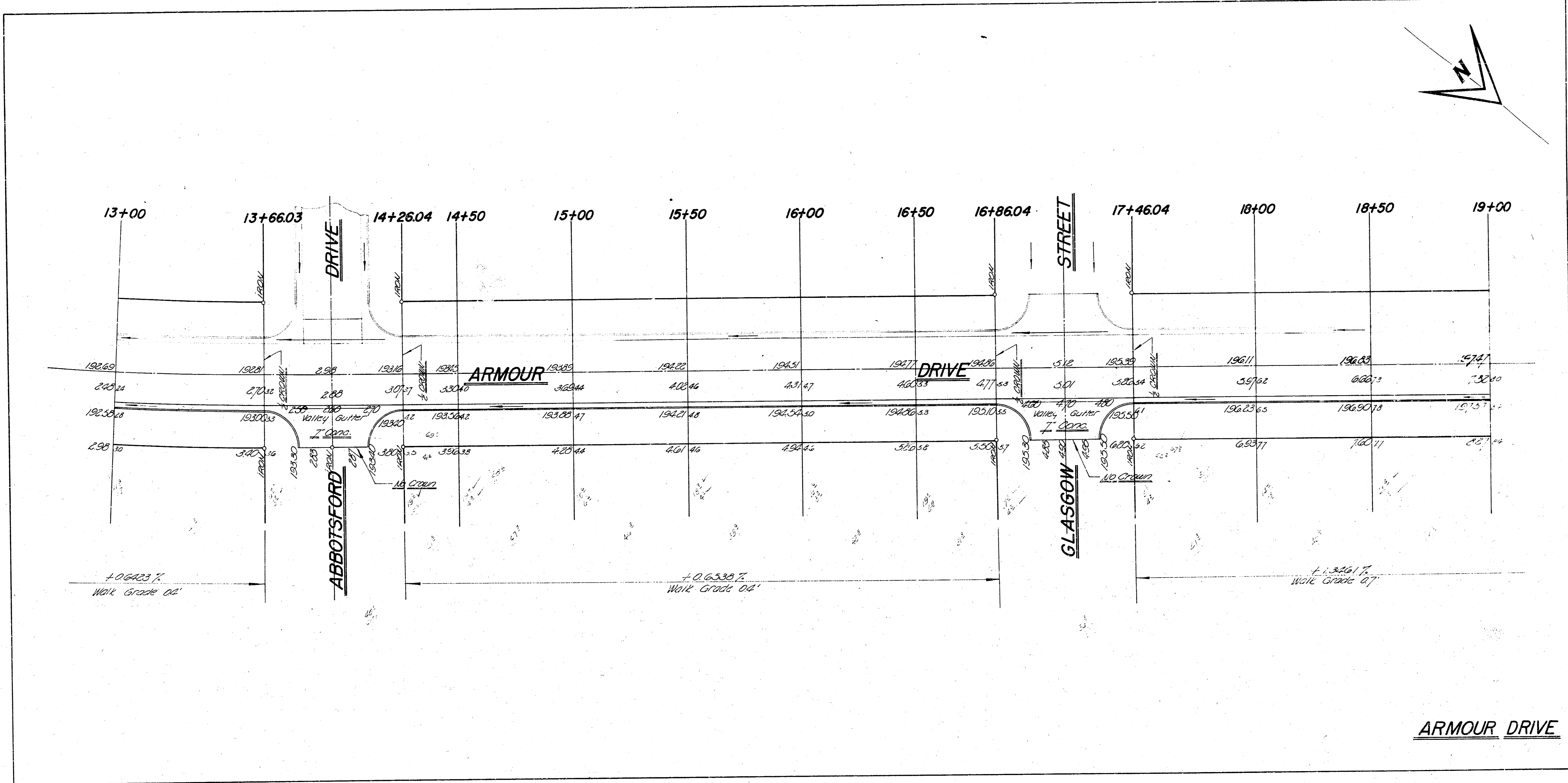
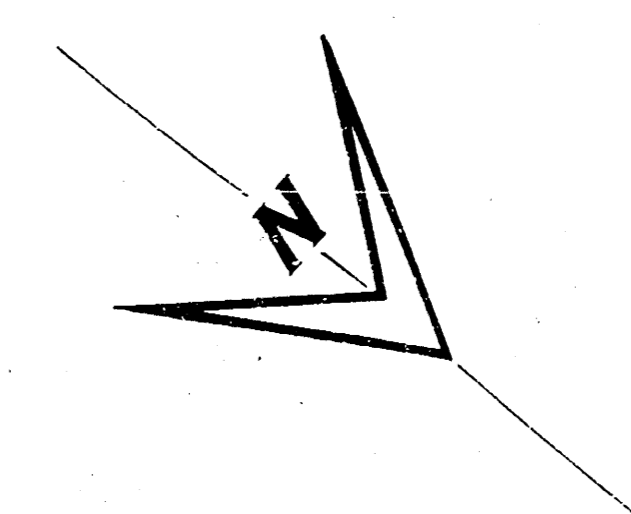
**CURVE DATA**

Radius @ E. I. = 1470'    Δ = 35° 30'

Length = 987.77'    Min = 116.93'

Sta	Arc	Chord 8" of E. Ch. E. Area	Deflection	E. Defl
4+00	-	-	-	-
4+50	48.00	41.79	0° 49' 06"	0° 49' 0"
5+00	30.00	49.76	0° 58' 27.9"	1° 47' 34"
5+50	-	-	-	-
6+00	30.00	49.76	0° 58' 27.9"	2° 46' 05"
6+44.46	44.46	44.22	0° 51' 58.5"	3° 44' 30"
7+04.46	60.00	39.72	1° 10' 10.2"	4° 36' 29"
7+50	45.54	45.33	0° 53' 15.0"	5° 26' 39"
8+00	50.00	49.76	0° 58' 27.9"	6° 35' 22"
8+50	-	-	-	-
9+00	-	-	-	-
9+50	-	-	-	-
10+00	30.00	49.76	0° 58' 27.9"	7° 35' 15"
10+22.91	22.91	22.79	0° 26' 47.3"	8° 33' 46"
10+45.81	60.00	39.72	1° 10' 09.5"	9° 32' 13"
11+00	17.09	17.21	0° 19' 59.0"	10° 29' 01"
11+50	30.00	49.76	0° 58' 27.9"	11° 27' 37"
12+00	-	-	-	-
12+50	-	-	-	-
13+00	-	-	-	-
13+50	30.00	49.76	0° 58' 27.9"	12° 25' 35"
13+66.03	66.03	65.72	1° 17' 12.5"	13° 20' 13"
13+98.77	29.74	29.60	0° 34' 46.5"	13° 15' 00"





ARMOUR DRIVE

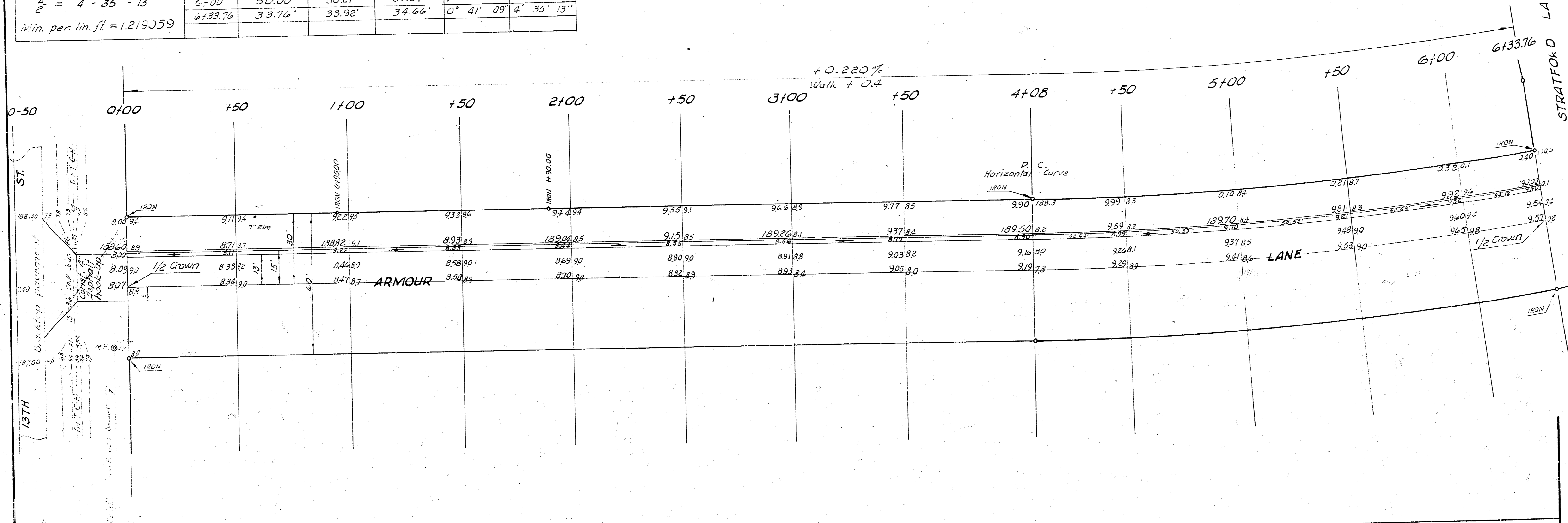
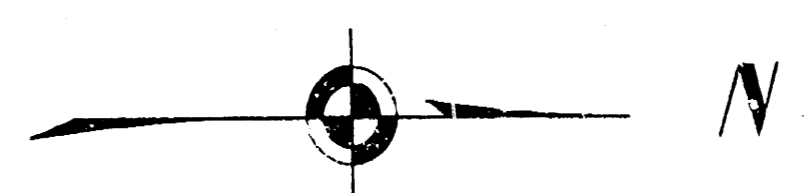


**CURVE DATA**  
Sta. 4+08 to Sta. 6+33.76

Sta. on west side  
R = 1410.0'  
Δ = 4° 35' 13"  
Win. per lin. ft. = 1.219359

Stations	Chord length West side	Chord length East side	Chord length from face of W. side R = 1410.0'	Chord length from face of E. side R = 1410.0'	Deflection	Total Deflection
4+08 RC					0° 00' 00"	0° 00' 00"
4+50	42.00'	42.20'	43.12'	43.12'	0° 51' 12"	0° 51' 12"
5+00	50.00'	50.27'	51.37'	51.37'	1° 00' 57"	1° 52' 09"
5+50	50.00'	50.28'	51.38'	51.38'	1° 00' 58"	2° 53' 07"
6+00	50.00'	50.27'	51.37'	51.37'	1° 00' 57"	3° 54' 04"
6+33.76	33.76'	33.92'	34.66'	34.66'	0° 41' 09"	4° 35' 13"

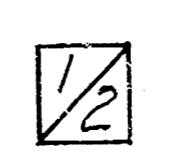
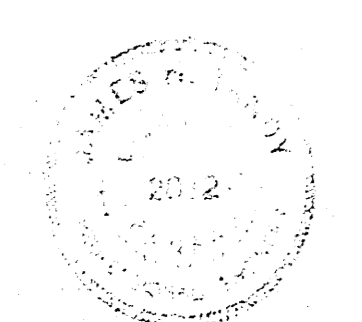
B. M. 191.63 "a" on S. cb 14th St. 8' W. of W.L. Armour Ln.  
B. M. 189.38 Top extreme N. E. cor. Stone Man. N.E. Armour & 13th St.  
Base = West Prop. line.



Earthwork

Excavation		Fill Compaction	
City	Prop.	City	Prop.
59.2	218.5	82.4	58.9
5.9	21.9	8.2	5.9
65.1 cu. yds.	240.4 cu. yds.	90.6 cu. yds.	64.8 cu. yds.

**ARMOUR LANE**  
WEST 1/2  
NL 13TH TO SL STRATFORD LN.  
13' - 2' - 15" A.C.  
CITY OF WICHITA, KANSAS  
B. E. SMITH CITY ENGINEER  
MAY 1961 PROJ. NO. CII-5

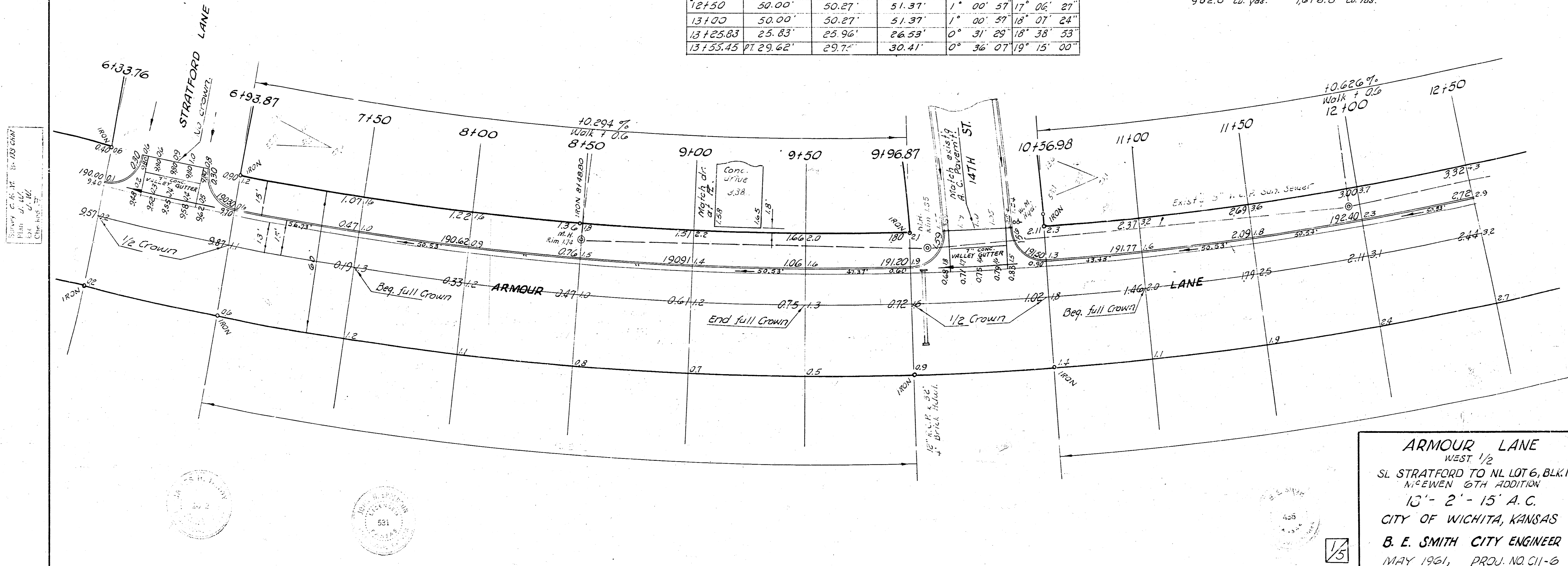
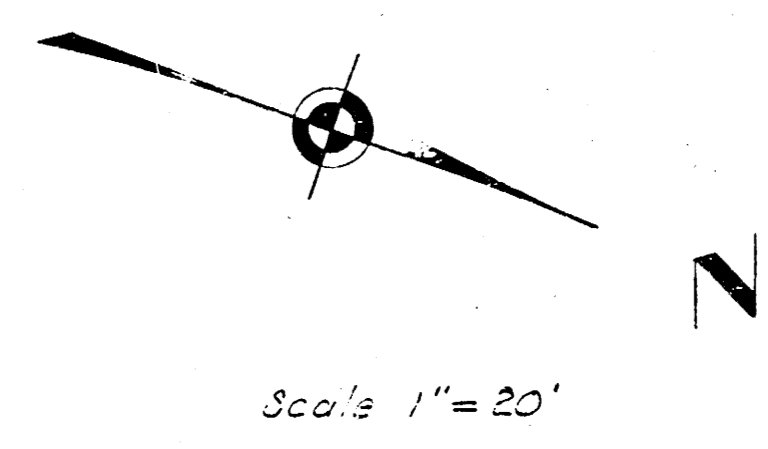


B. M. 189.35 Top extreme N.E. cor Stone Man. N.E. Armour of 13th.  
 B. M. 191.63 "A" on S. cb 14th St. W. of W. L. Armour.  
 Base of stations on west Prop. line.

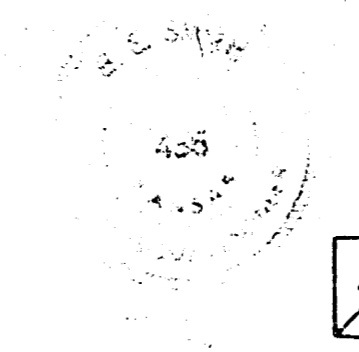
CURVE DATA					
Sta. 6+33.76 to Sta. 13+55.45					
STATIONS	Arc length West P2	Chord length offset from P2	Chord length offset from P1	Deflection	Total Deflection
6+33.76					4° 35' 13"
6+93.87	60.11'	60.42'	61.74'	1° 13' 17"	5° 48' 30"
7+50	56.13'	56.40'	57.63'	1° 08' 25"	6° 56' 55"
8+00	50.00'	50.27'	51.37'	1° 00' 57"	7° 57' 52"
8+50	50.00'	50.27'	51.37'	1° 00' 57"	8° 58' 49"
9+00	50.00'	50.28'	51.38'	1° 00' 58"	9° 59' 47"
9+50	50.00'	50.27'	51.37'	1° 00' 57"	11° 00' 44"
9+96.87	46.87'	47.10'	48.13'	0° 57' 08"	11° 57' 52"
10+56.98	60.11'	60.42'	61.74'	1° 13' 17"	13° 11' 09"
11+00	43.02'	43.19'	44.13'	0° 52' 27"	14° 03' 36"
11+50	50.00'	50.27'	51.37'	1° 00' 57"	15° 04' 33"
12+00	50.00'	50.28'	51.38'	1° 00' 57"	16° 05' 30"
12+50	50.00'	50.27'	51.37'	1° 00' 57"	17° 06' 27"
13+00	50.00'	50.27'	51.37'	1° 00' 57"	18° 07' 24"
13+25.83	25.83'	25.96'	26.53'	0° 31' 29"	18° 38' 53"
13+55.45	29.62'	29.74'	30.41'	0° 36' 07"	19° 15' 00"

Sta. on West P2  
 $R = 1410'$   
 $\frac{D}{2} = 19^\circ - 15' - 00''$   
 Min. Per. lin. ft. = 1.219061

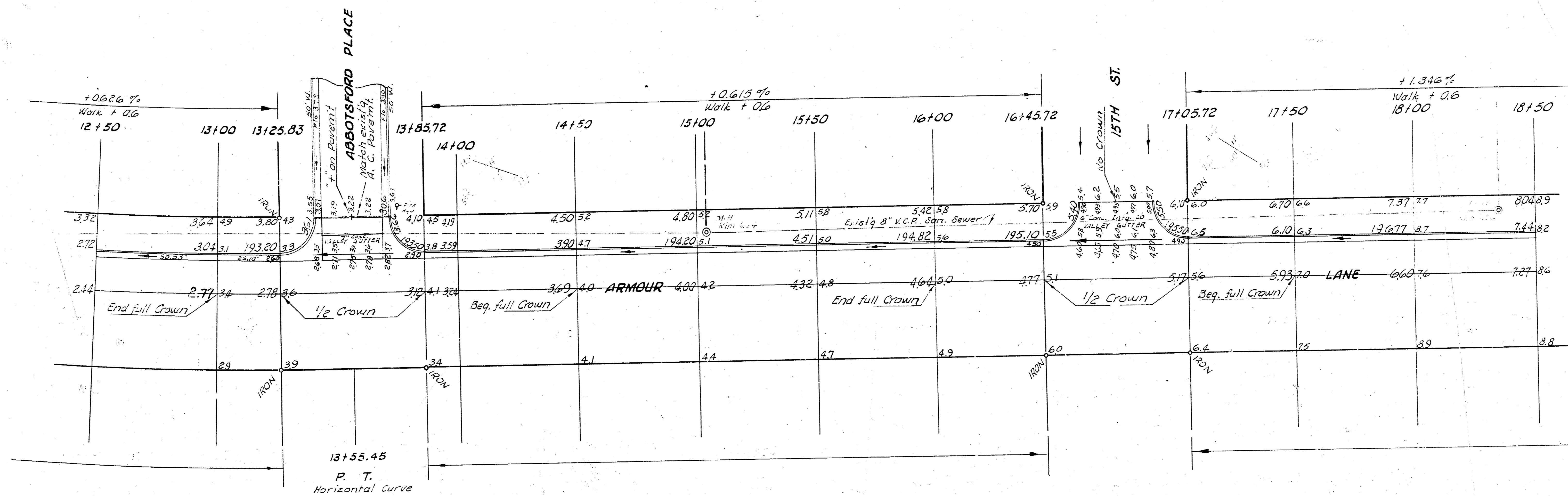
EARTHWORK  
 Excavation  
 CITY PROP.  
 820.0 1466.6  
 82.0 107.1467  
 902.0 Cu. yds. 1613.3 Cu. yds.

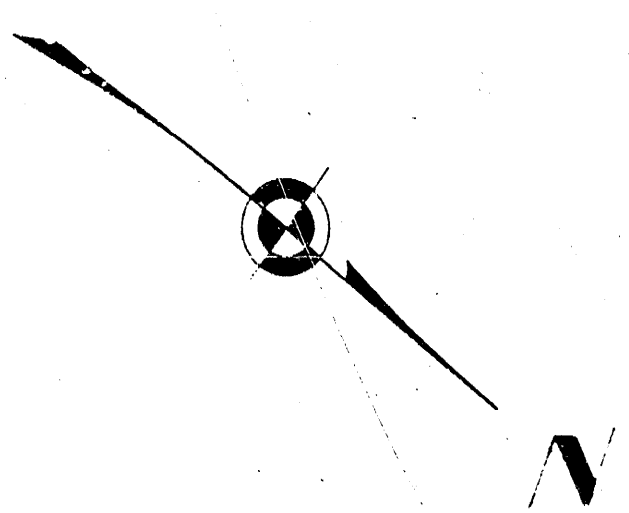


**ARMOUR LANE**  
 WEST 1/2  
 SL. STRATFORD TO NL LOT 6, BLK. 1  
 McEWEN 6TH ADDITION  
 13' - 2' - 15' A. C.  
 CITY OF WICHITA, KANSAS  
 B. E. SMITH CITY ENGINEER  
 MAY 1961, PROJ. NO. C11-6

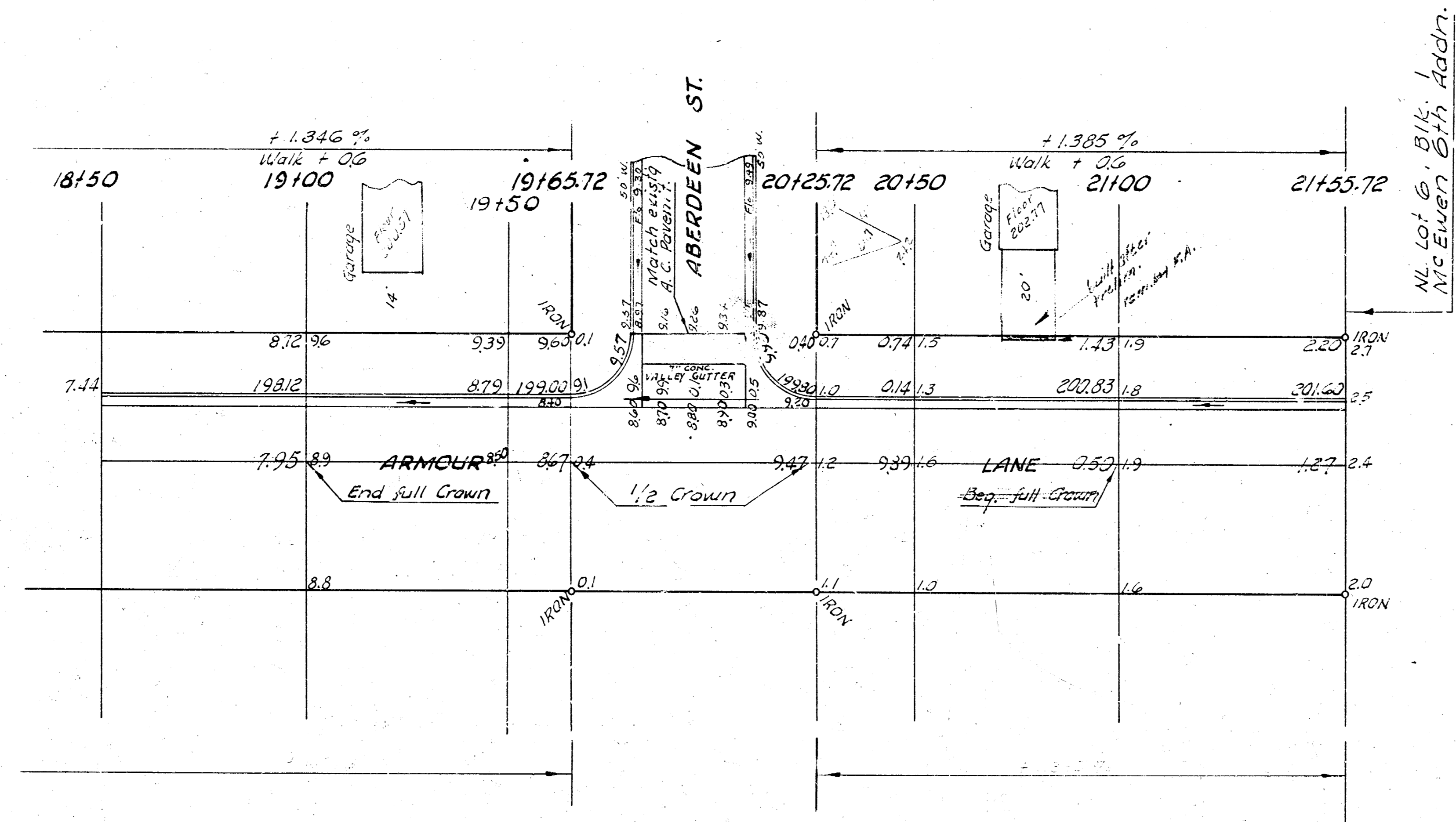


B.M. 193.75 "a" on S. cb Abbotsford 12' W. of W. L. Armour.

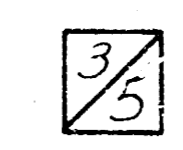



  
 ARMOUR LANE  
 WEST 1/2  
 SL. STRATFORD TO N. LOT 6, B.K. 1  
 PROJ. NO. C11-6

- 3. N. 200.44 S.E. cor. conc. base air conditioner E. S. House S.W. Armour & Aberdeen.
- 3. N. 207.86 Top extreme N.E. cor. stone Man. N.E. Woodlawn & Aberdeen.
- 5. M. 211.860 Standard N.E. Woodlawn & 17th.



N.L. Lot 6, Blk. 1  
McEwen 5th Addn.



ARMOUR LANE  
WEST 1/2  
SL STRATFORD N.L. LOT 6, BLK. 1  
PROJ. NO. 511-6