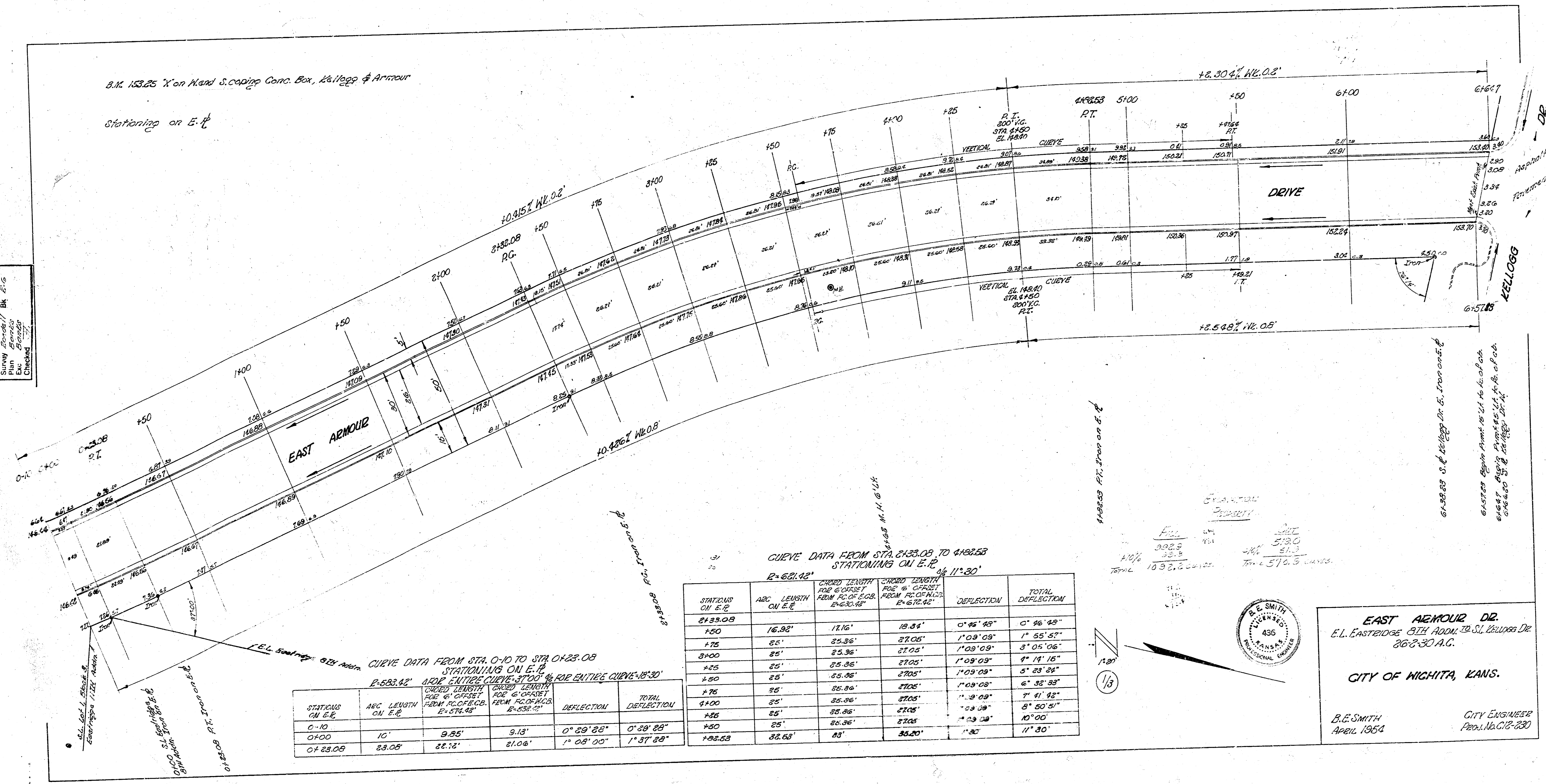


B.M. 153.25 X on Hand S. Co. Co. Box, Kellogg & Armour

Stationing on E. A.

Checked  
 B.E. Smith  
 B.E. Smith  
 B.E. Smith  
 B.E. Smith



CURVE DATA FROM STA. 0+10 TO STA. 0+23.09  
 STATIONING ON E. A.  
 R=583.42' ARDE ENTIRE CURVE 37'00" FOR ENTIRE CURVE 18'30"

STATIONS ON E. A.	ARC LENGTH ON E. A.	CHORD LENGTH FOR 6' OFFSET FROM P.C. OF C.B. P=574.48'	CHORD LENGTH FOR 6' OFFSET FROM P.O. OF C.B. P=530.01'	DEFLECTION	TOTAL DEFLECTION
0+10	10'	9.85'	9.18'	0° 29' 28"	0° 29' 28"
0+20	20'	19.70'	18.36'	0° 58' 56"	0° 58' 56"
0+23.09	23.09'	22.72'	21.06'	1° 08' 00"	1° 37' 24"

CURVE DATA FROM STA. 4+33.08 TO 4+58.58  
 STATIONING ON E. A.  
 R=621.92' ARDE ENTIRE CURVE 37'00" FOR ENTIRE CURVE 18'30"

STATIONS ON E. A.	ARC LENGTH ON E. A.	CHORD LENGTH FOR 6' OFFSET FROM P.C. OF C.B. P=623.18'	CHORD LENGTH FOR 6' OFFSET FROM P.O. OF C.B. P=572.42'	DEFLECTION	TOTAL DEFLECTION
4+33.08	16.92'	17.16'	16.54'	0° 46' 43"	0° 46' 43"
4+50	25'	25.36'	24.05'	1° 09' 09"	1° 55' 52"
4+75	25'	25.36'	24.05'	1° 09' 09"	3° 05' 06"
4+100	25'	25.36'	24.05'	1° 09' 09"	4° 14' 15"
4+25	25'	25.36'	24.05'	1° 09' 09"	5° 23' 24"
4+50	25'	25.36'	24.05'	1° 09' 09"	6° 32' 33"
4+75	25'	25.36'	24.05'	1° 09' 09"	7° 41' 42"
4+100	25'	25.36'	24.05'	1° 09' 09"	8° 50' 51"
4+25	25'	25.36'	24.05'	1° 09' 09"	10° 00'
4+58.58	25.50'	25.50'	24.05'	1° 09' 09"	11° 30'



**EAST ARMOUR DR.**  
 E.L. EASTBIDGE 5TH ADD. TO S.L. KELLOGG DR.  
 26° 30' A.C.

CITY OF WICHITA, KANS.

B.E. SMITH  
 APRIL 1954

CITY ENGINEER  
 PROJ. NO. C-230