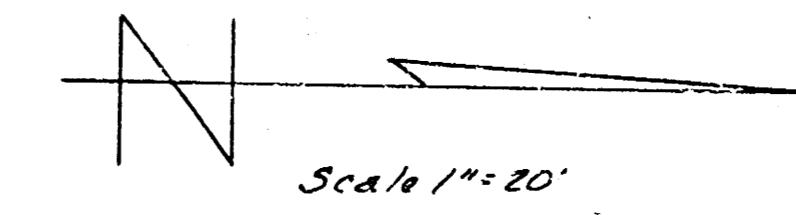


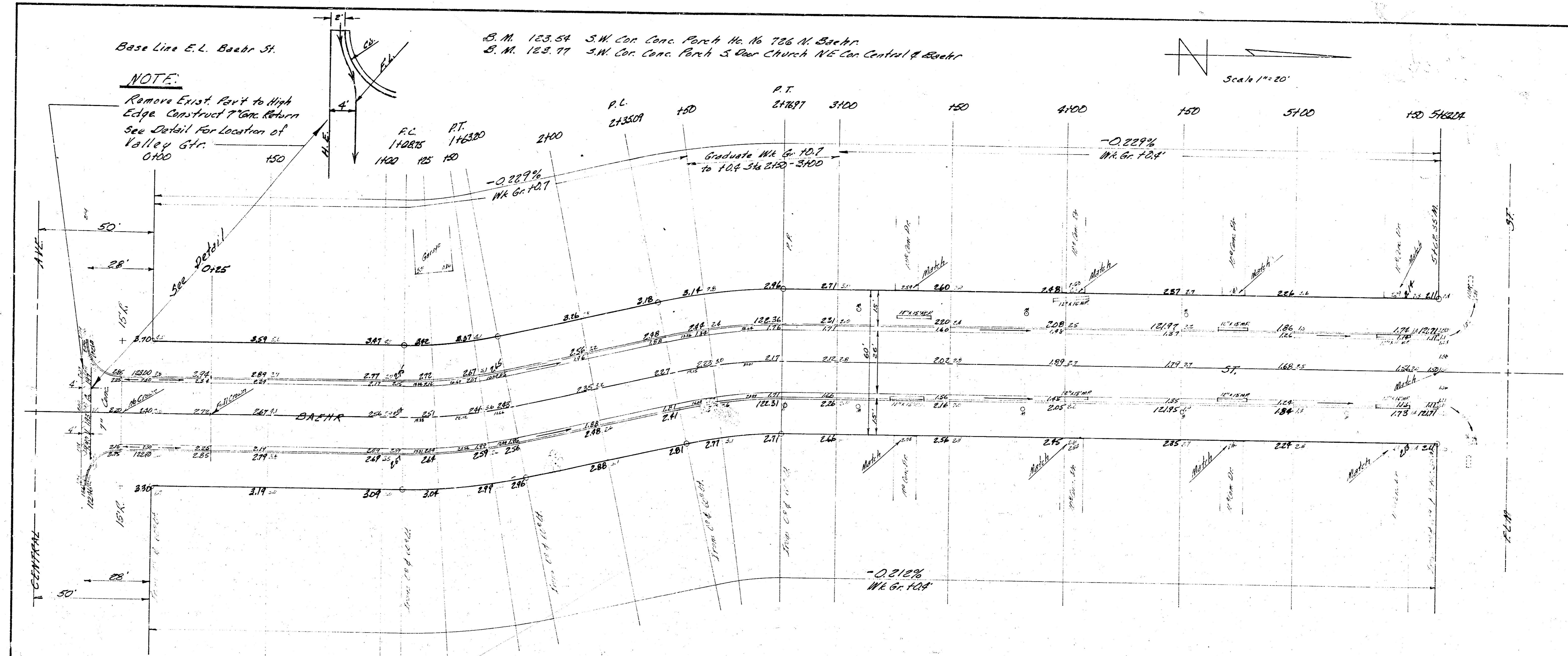
Base Line E.L. Baehr St.

B.M. 123.54 S.W. Cor. Conc. Patch No. 16 786 N. Baehr.  
 B.M. 123.77 S.W. Cor. Conc. Patch 3 Dear Church NE Cor Central & Baehr



**NOTE:**

Remove Exist. Pav't to High Edge Construct 7" Conc. Return See Detail For Location of Valley Gtr. 0+00



| CURVE DATA BASED E.P.L. P. 200' Δ 12° 0' |       |               |               |            |             |
|--|-------|---------------|---------------|------------|-------------|
| Sta                                      | Arc   | Chord B' & C' | Dist. B' & C' | Deflection | Total Diff. |
| P.C. 1+08.75                             | 16.85 | 15.81         | 12.95         | 1° 47' 25" | 1° 47' 25"  |
| P.T. 1+25.60                             | 25.00 | 24.31         | 19.87         | 3° 45' 14" | 5° 32' 39"  |
| P.T. 1+42.20                             | 18.60 | 17.71         | 9.80          | 1° 47' 25" | 6° 20' 00"  |

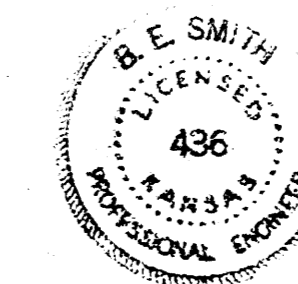
Min. I.P. 6.61105

| CURVE DATA BASED E.P.L. P. 200' Δ 12° 0' |       |               |               |            |             |
|--|-------|---------------|---------------|------------|-------------|
| Sta                                      | Arc   | Chord B' & C' | Dist. B' & C' | Deflection | Total Diff. |
| P.C. 2+78.97                             | 14.91 | 14.43         | 10.66         | 2° 08' 01" | 2° 08' 01"  |
| P.T. 2+93.88                             | 26.97 | 26.90         | 34.10         | 3° 51' 01" | 6° 00' 00"  |

Min. I.P. 8.57437

**Excavation**

| Prop            | City          |
|-----------------|---------------|
| 1123.1 CY       | 22.5 CY       |
| 112.3 10%       | 2.2 10%       |
| 1235.4 CY Total | 24.7 CY Total |



BAEHR ST.  
 N.L. CENTRAL TO S.L. ELM  
 26' - 2' - 30' AC.  
 CITY OF WICHITA, KANSAS  
 B.E. SMITH CITY ENGINEER  
 DATE 11/28/1918 PROJ. NO. C15-2

1/2