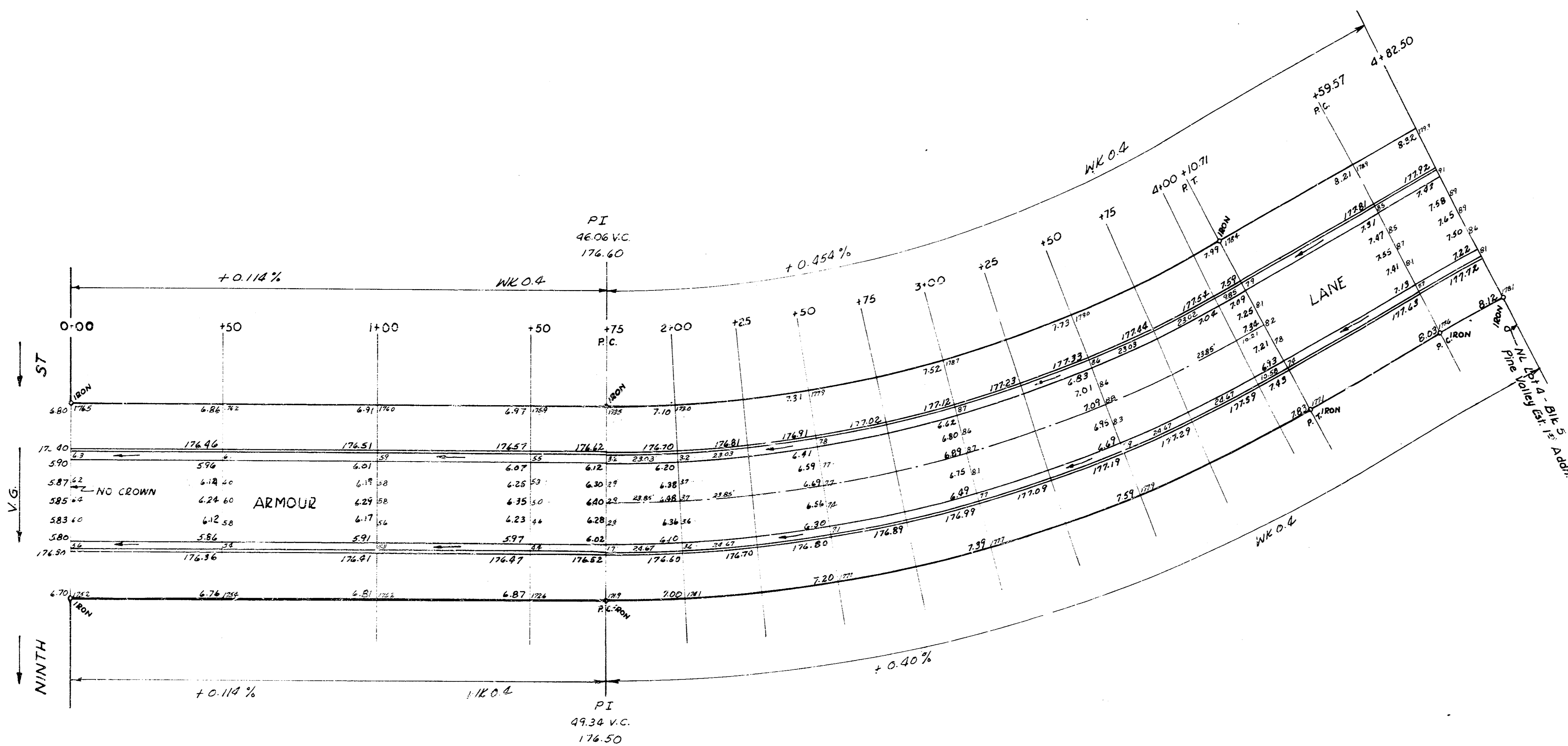


BM. = 177.98 Standard SW cor. 9<sup>th</sup> & Armour  
 Stationing on 9<sup>th</sup> offset W. of E. Prop. Line



G 10  
 Hughes  
 Greene



CURVE DATA: Sta. 1+75 to 4+10.71 Sta. on 9<sup>th</sup> offset W. of E. R.  
 R=456.26' Δ=29°36' Defl.=3.7675'/ft. arc.

STATION	Deflection Angle	Total Deflection	Chord Length 6" offset Ecb	Chord Length 6" offset W. side
1+75				
2+00	1° 34' 11"	1° 34' 11"	24.99	22.49
+25	1° 34' 11"	3° 08' 23"	24.99	22.49
+50	1° 34' 11"	4° 42' 33"	24.99	22.49
+75	1° 34' 11"	6° 16' 44"	24.99	22.49
3+00	1° 34' 11"	7° 50' 55"	24.99	22.49
+25	1° 34' 11"	9° 25' 06"	24.99	22.49
+50	1° 34' 11"	11° 59' 17"	24.99	22.49
+75	1° 34' 11"	13° 33' 28"	24.99	22.49
4+00	1° 34' 11"	15° 07' 39"	24.99	22.49
4+10.71	0° 40' 21"	15° 48"	10.71	9.75

CURVE DATA: Sta. 4+59.57 to 4+82.50 Sta. on 9<sup>th</sup> offset W. of E. R.  
 R=1532.47' Δ=0° 51' 54" Defl.=1.1216' /ft. arc.

STATION	Deflection Angle	Total Deflection	Chord Length 6" offset Ecb	Chord Length 6" offset W. side
4+59.57				
4+82.50	0° 25' 57"	0° 25' 57"	23.14	23.85

ARMOUR LANE  
 NL 9<sup>th</sup> - NL Lot 4-Blk 5 - Pine Valley Est. 1<sup>st</sup> Add.  
 26 - 2.30 AC  
 CITY OF WICHITA, KANSAS  
 B. E. SMITH CITY ENGINEER  
 MAY 1952 PROJ. N. J. C. 16-34