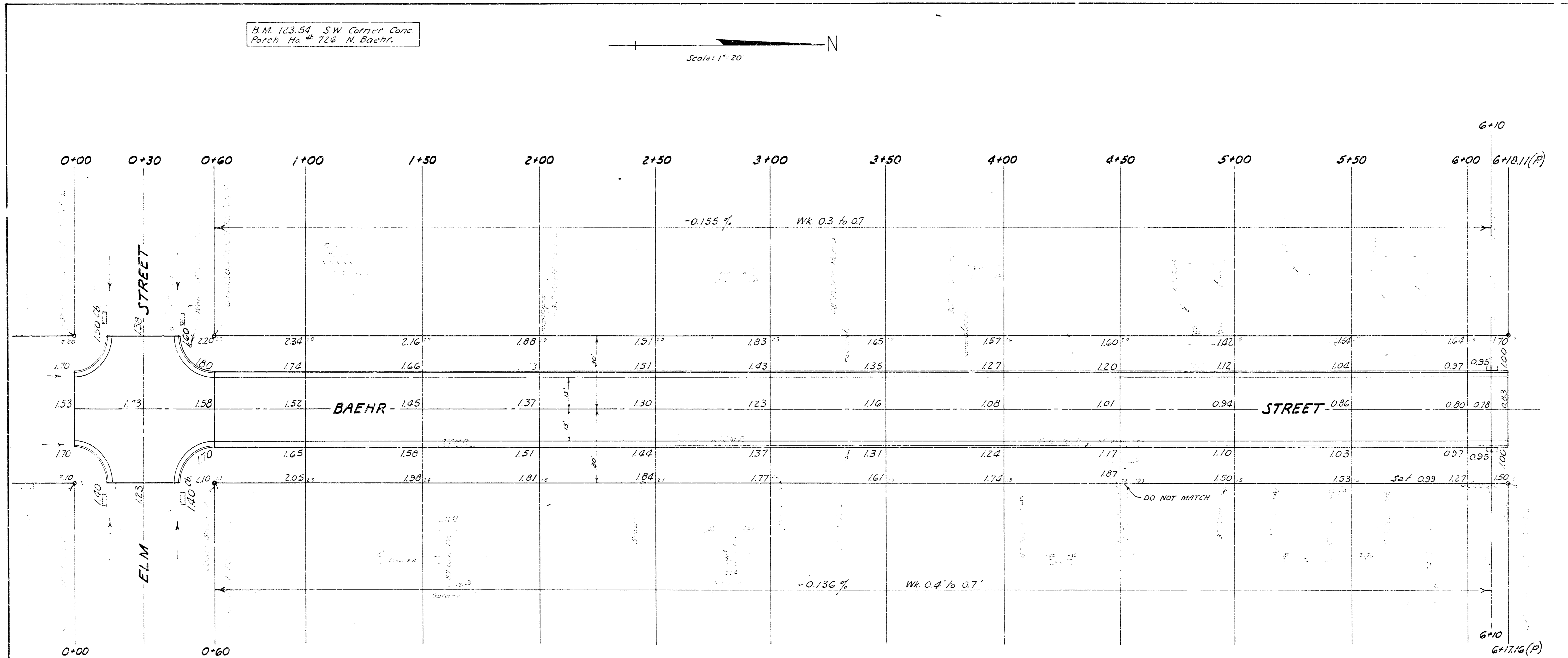


B.M. 123.54 S.W. Corner Conc  
Porch No. # 726 N. Baehr.

Scale: 1" = 20'



Checked  
By  
Date

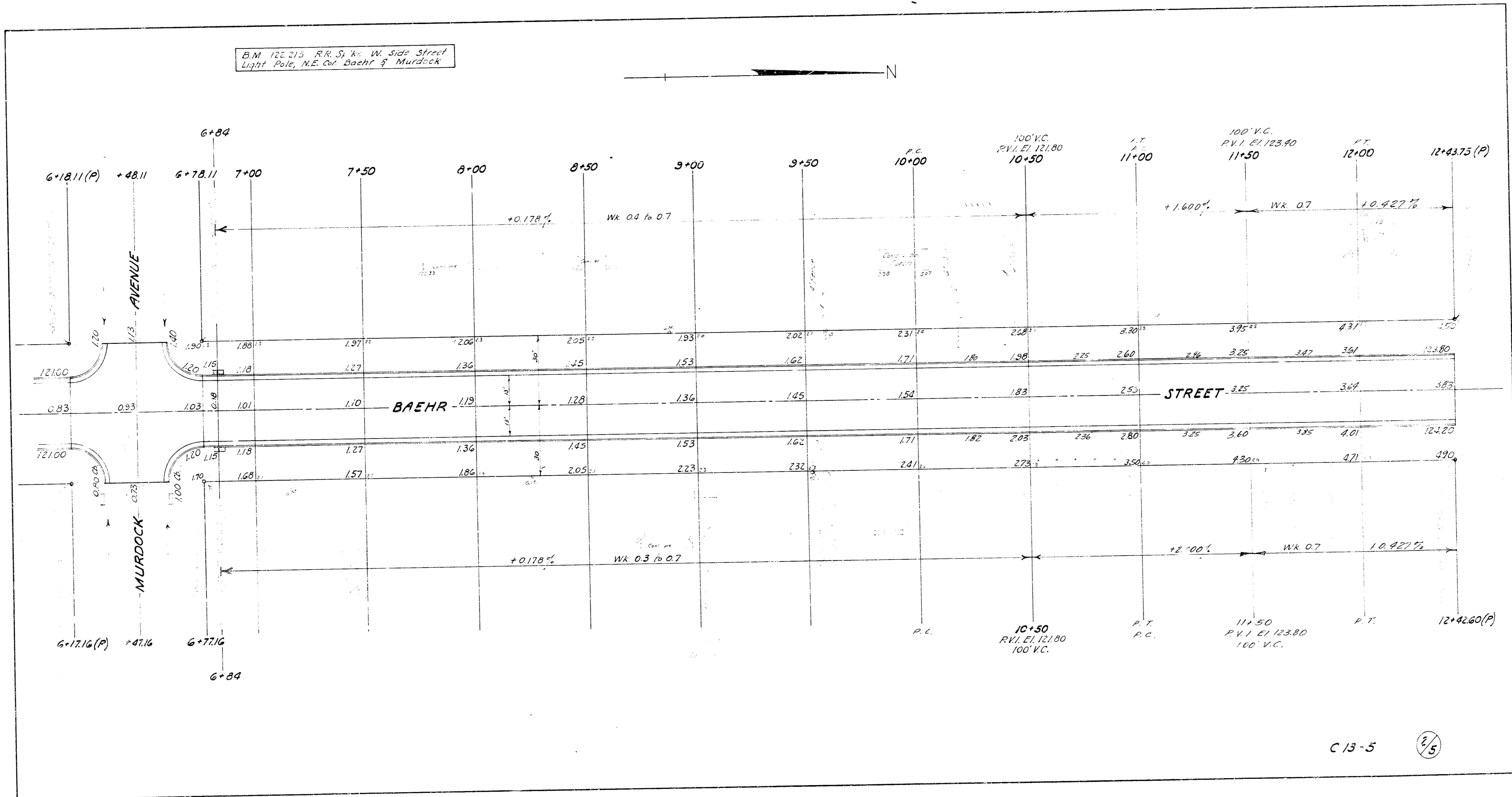
**EXCAVATION**

PROPERTY	CITY
2973 Cu Yds.	625 Cu Yds.
+10% 297 - -	62 - -
<b>Totals 3270 Cu Yds.</b>	<b>687 Cu Yds.</b>

**BAEHR STREET**  
FROM S. ELM STREET  
TO S. L. NINTH STREET  
26' 2'-30" Asph. Concrete  
B.E. SMITH CITY ENGINEER  
CITY OF WICHITA, KANSAS  
1953  
Project No. C13-5

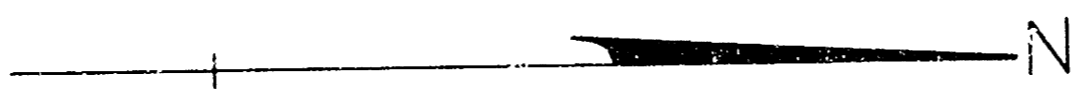


B.M. 122.215 R.R. S. x W. Side Street  
Light Pole, N.E. Cor. Baehr & Murdock



B.M. 125.65 N.E. Cor. Conc.  
Step No. # 843 Baehr.

B.M. 125.55 RR Spike NW Side Street  
Light Pole, S.E. Corner Baehr & 9th St.



No. VC  
PVI/EI 124.60  
15+75

