

# 1985 ARTERIAL SIDEWALK

PROJECT NO.

## 472-76-245-81487-000-000-001

CITY OF WICHITA, KANSAS

MICHAEL E. LINDEBAK, CITY ENGINEER

### BASE CONTRACT

- WEST SIDE OF McLEAN BLVD FROM 9TH ST. TO MERIDIAN
- NORTH SIDE OF PAWNEE FROM OSAGE TO THE ALLEY WEST OF WALNUT ST.
- NORTH SIDE OF PAWNEE FROM PALISADE TO GREENWAY
- NORTH SIDE OF PAWNEE FROM MAIN TO WATER
- SOUTH SIDE OF 13TH ST. FROM MAIN TO MARKET
- EAST SIDE MAIN - 2142 SOUTH MAIN STREET
- EAST SIDE OF HYDRAULIC - SOUTH LINE PARK ST. TO 61' NORTH SOUTH LINE PARK ST.
- NORTH SIDE OF HARRY - WEST SIDE CHRISTINE (INTERSECTION HOOK-UP)
- NORTH SIDE MAC ARTHUR RD. WEST LINE WELDON HIGGINS ADD. TO HYDRAULIC
- NORTH SIDE PAWNEE PALISADE TO WATER

### ADD ALTERNATE NO. 1

WEST SIDE HYDRAULIC - MAC ARTHUR RD TO MILLS AVE

### ADD ALTERNATE NO. 2

NORTH SIDE 13TH ST. NORTH 3700 WEST 13TH ST. N  
(Remove existing walk and construct new on property line)

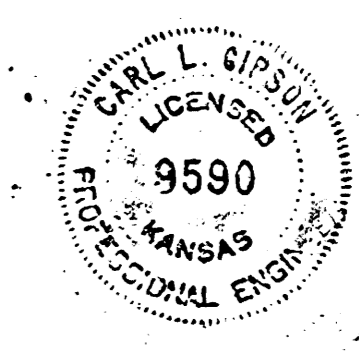
NOTE: NO ADD ALTERNATE IS TO BE CONSTRUCTED WITHOUT WRITTEN APPROVAL OF THE CITY ENGINEER.

EXACT LOCATION AND GRADE TO BE DETERMINED BY THE FIELD ENGINEER AT TIME OF CONSTRUCTION.

ALL EARTHWORK NECESSARY TO COMPLETE THIS PROJECT IS TO BE SUBSIDIARY TO OTHER BID ITEMS.

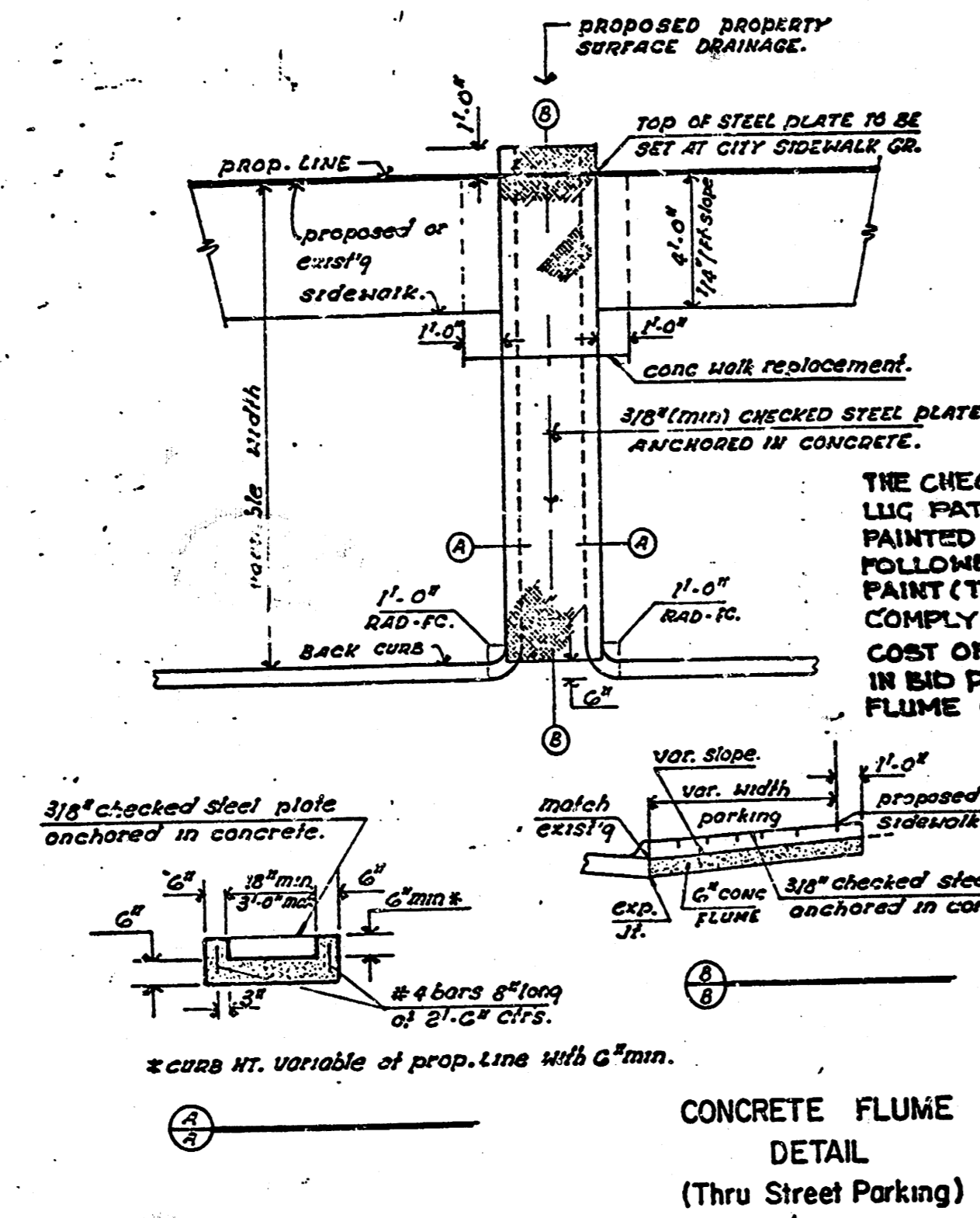
ALL AREAS DISTURBED BY THE CONTRACTOR SHALL BE RESTORED TO A CONDITION ACCEPTABLE TO THE ENGINEER. THIS WORK SHALL BE SUBSIDIARY TO OTHER BID ITEMS.

SHEET NO.	DESCRIPTION
1	COVER SHEET
2	MISCELLANEOUS DETAILS



FILMED FROM THE BEST AVAILABLE COPY

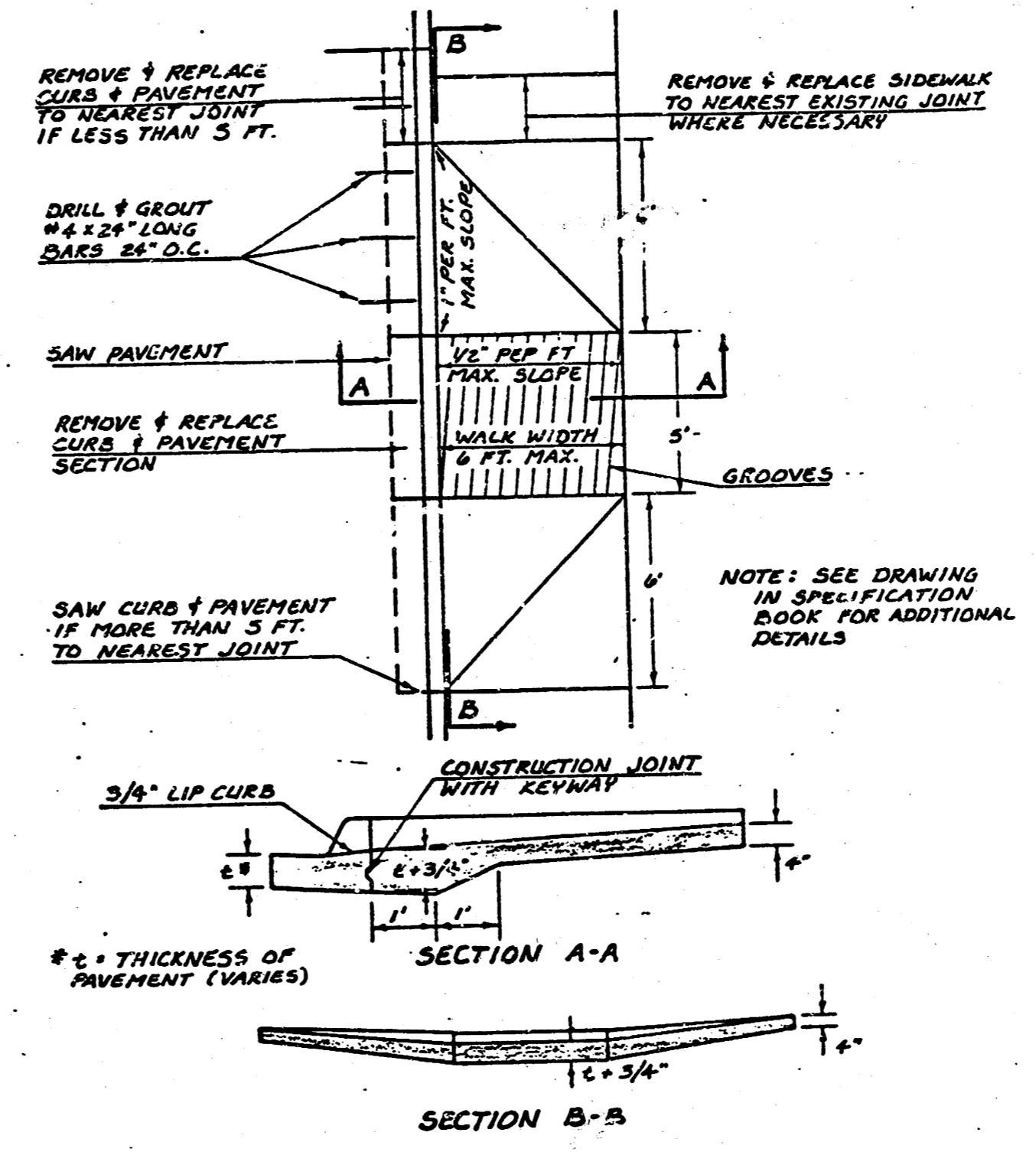
NOTE: ANY FENCE REMOVED IS TO BE SAWAGED AND GIVEN TO THE ADJACENT PROPERTY OWNER.



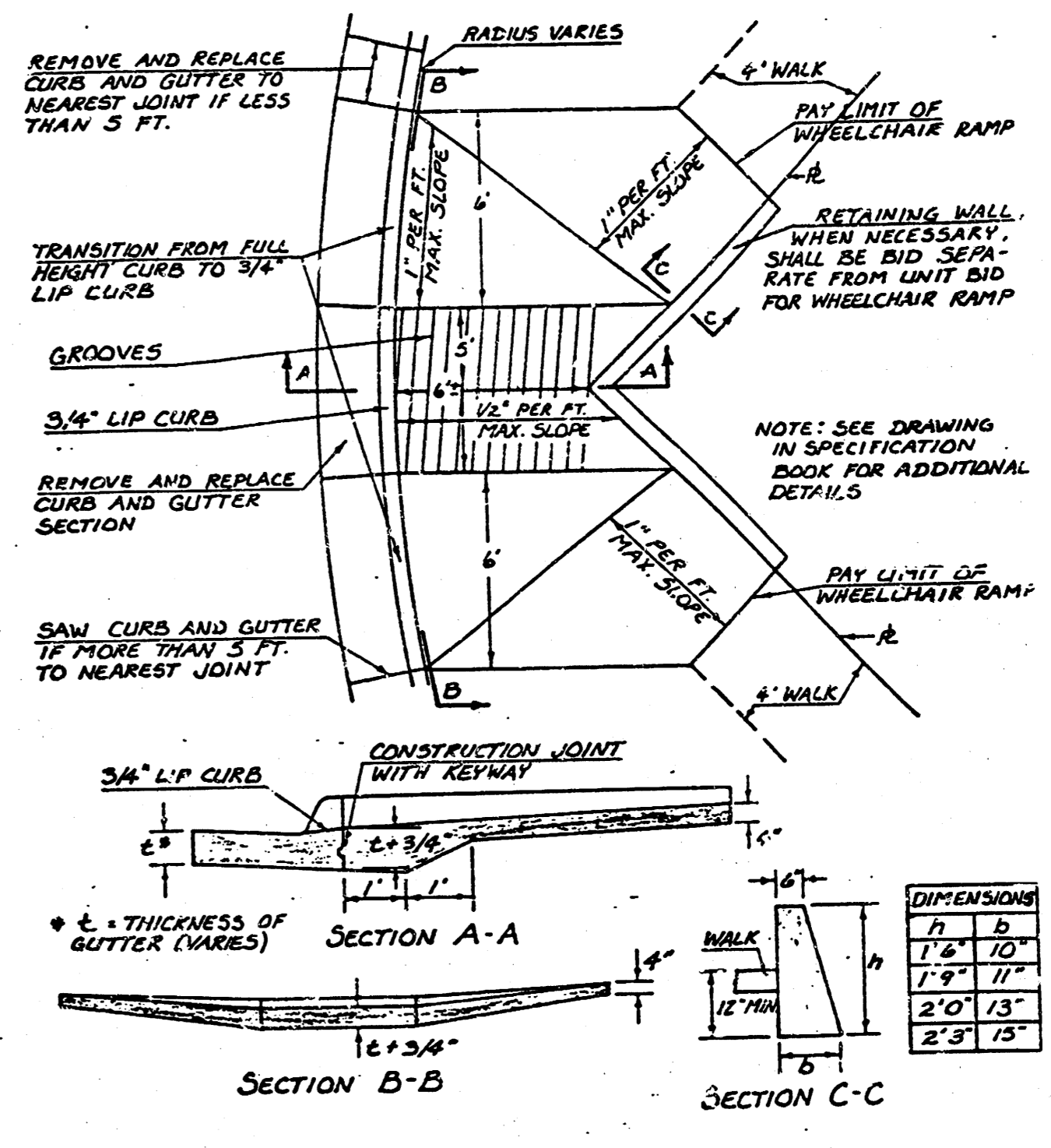
THE CHECKERED STEEL PLATE SHALL HAVE A RAISED LUG PATTERN AND SHALL BE EITHER SHOP OR FIELD PAINTED WITH ONE COAT OF ZINC DUST PAINT FOLLOWED BY TWO FIELD COATS OF ALUMINUM PAINT (TOP AND BOTTOM). STEEL USED SHALL COMPLY WITH ASTM A-50, A-242, OR A-441. COST OF STEEL PLATE & PAINTING TO BE INCLUDED IN BID PRICE FOR L.F. STD. COVERED CONCRETE FLUME CONSTRUCTION.

COST OF ALL WORK INCLUDED IN THE BID PRICE FOR STD. COVERED FLUME CONSTRUCTION SHALL INCLUDE REMOVING AND RECONSTRUCTING EXIST'G CURB & GUTTER, COMPACTION OF SUBGRADE AND NECESSARY AREA GRADING.

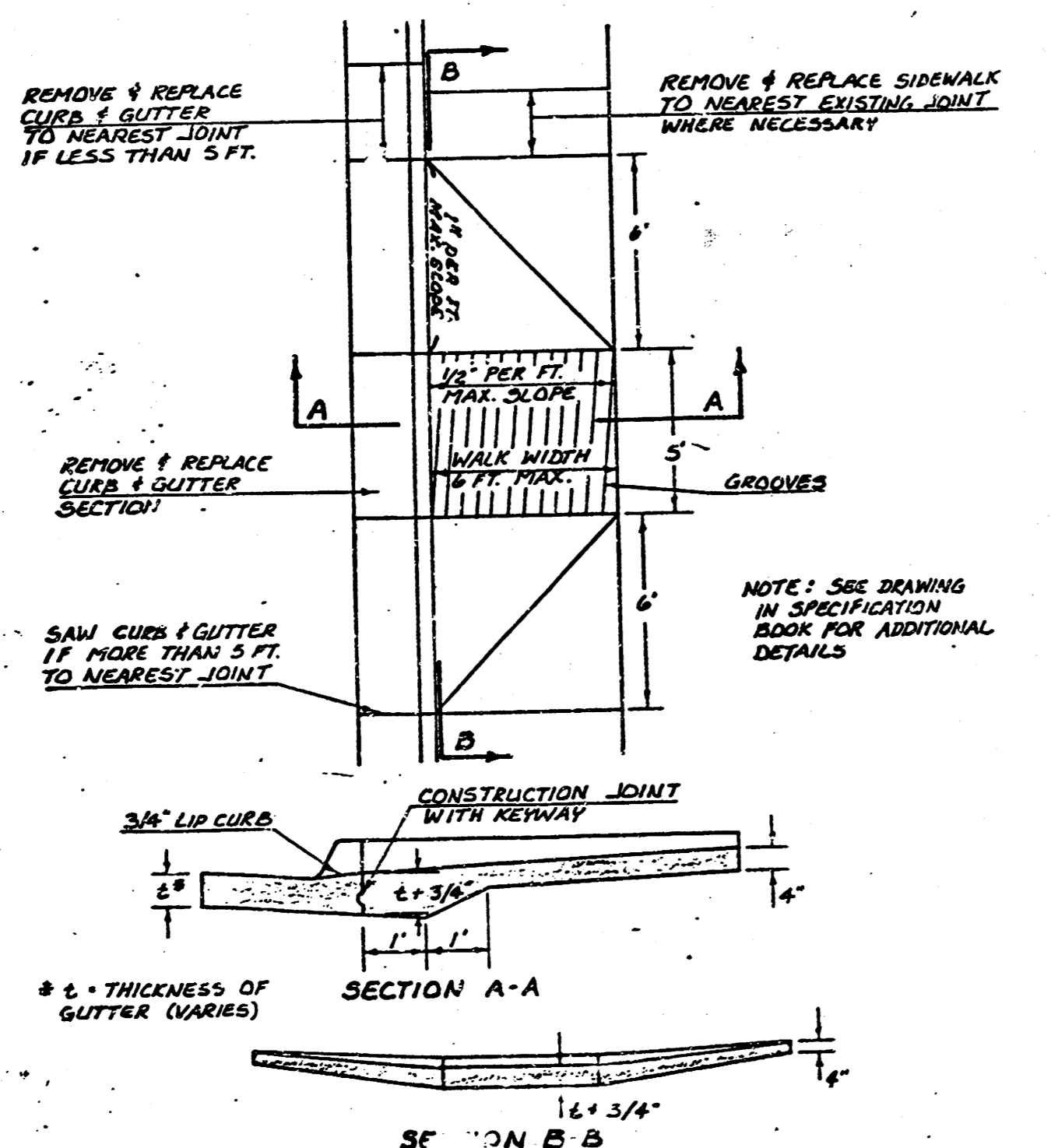
STANDARD WHEELCHAIR RAMP CONSTRUCTION DETAIL FOR CONCRETE STREETS WITH MONOLITHIC CURB AND FULL WALK



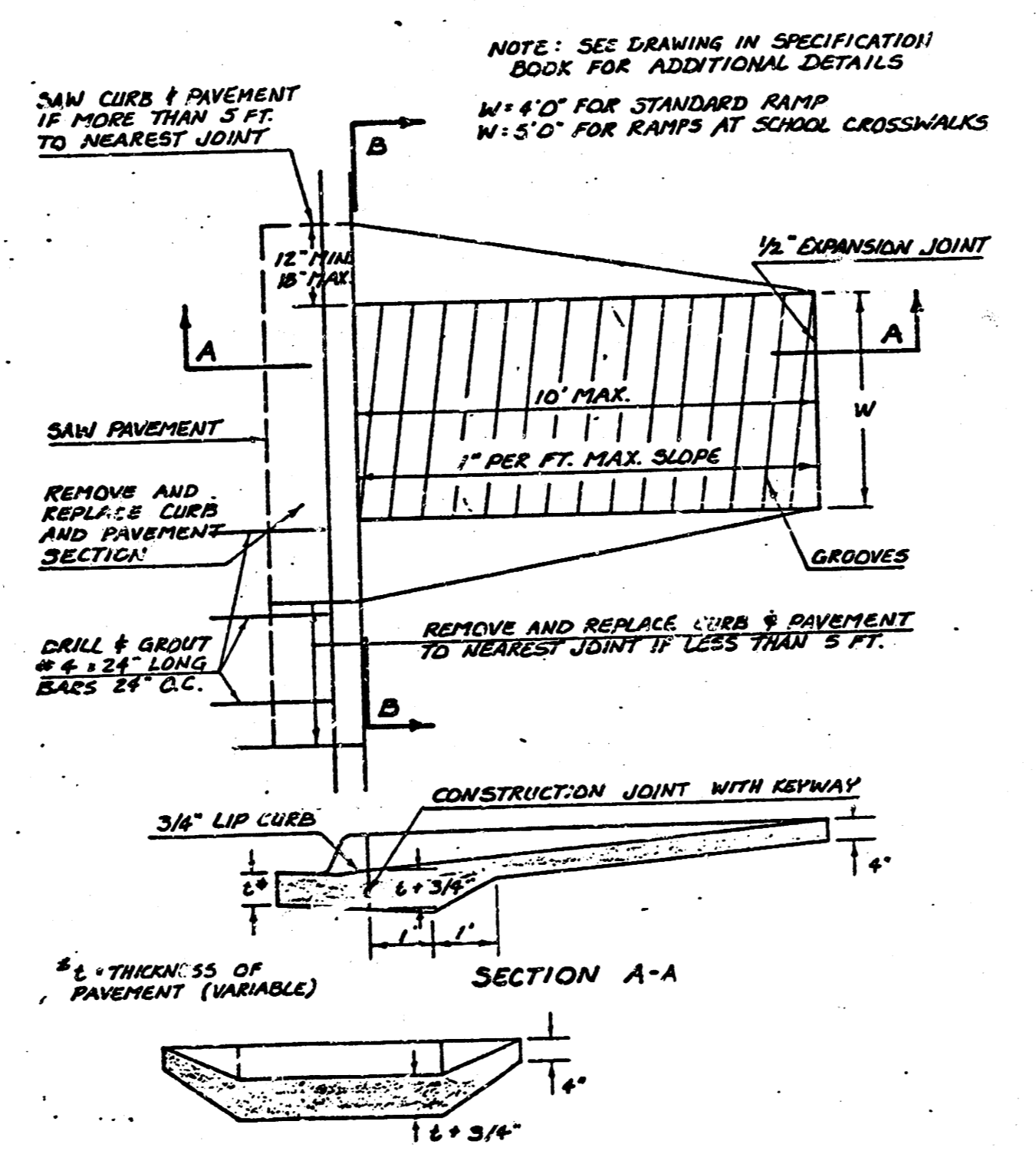
STANDARD WHEELCHAIR RAMP CONSTRUCTION DETAIL FOR STREET WITH COMBINED CURB AND GUTTER ON RADIUS WITH 6\"/>



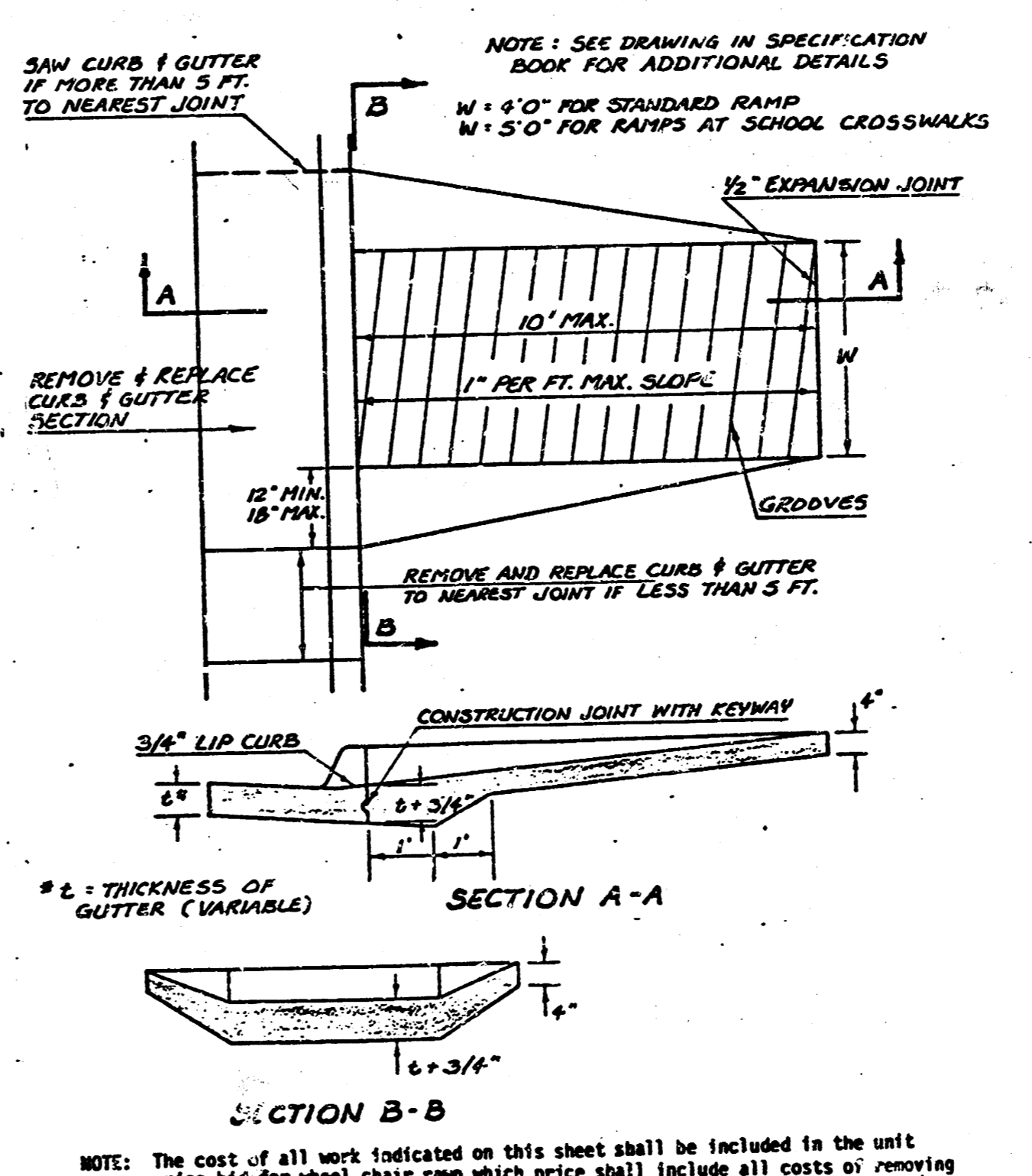
STANDARD WHEELCHAIR RAMP CONSTRUCTION DETAIL FOR STREETS WITH COMBINED CURB & GUTTER AND FULL WALK



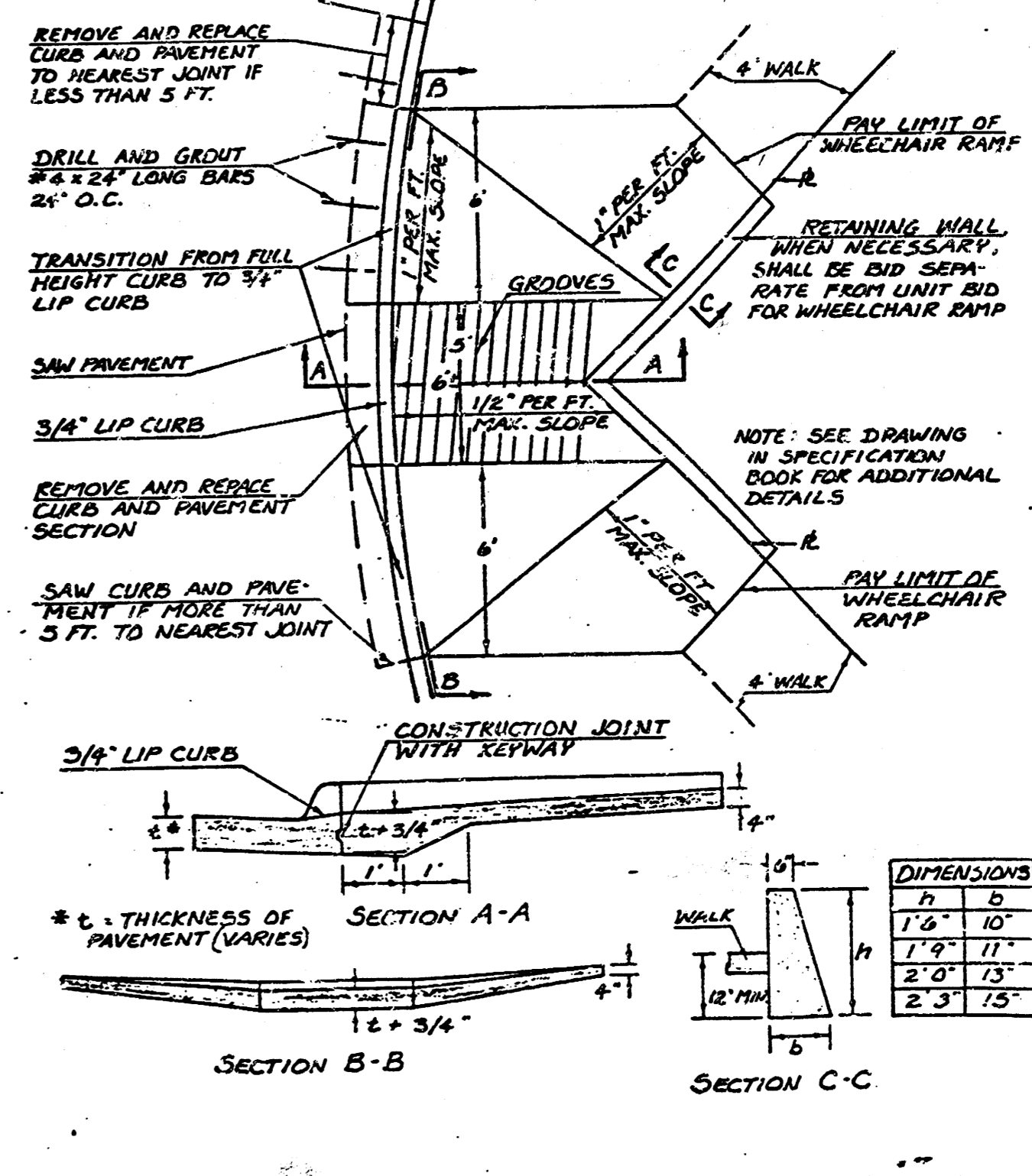
STANDARD WHEELCHAIR RAMP CONSTRUCTION DETAIL FOR CONCRETE STREETS WITH MONOLITHIC CURB



STANDARD WHEELCHAIR RAMP CONSTRUCTION DETAIL FOR STREETS WITH COMBINED CURB & GUTTER



STANDARD WHEELCHAIR RAMP CONSTRUCTION DETAIL FOR CONCRETE STREETS WITH MONOLITHIC CURB ON RADIUS WITH 6\"/>



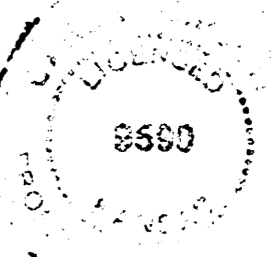
NOTE: The cost of all work indicated on this sheet shall be included in the unit price bid for wheel chair ramp which price shall include all costs of removing and reconstructing existing curb and gutter, compaction of subgrade and necessary area grading.

NOTE: The cost of all work indicated on this sheet shall be included in the unit price bid for wheel chair ramp which price shall include all costs of removing and reconstructing existing pavement and monolithic curb, compaction of subgrade and necessary area grading.

NOTE: The cost of all work indicated on this sheet shall be included in the unit price bid for wheel chair ramp which price shall include all costs of removing and reconstructing existing combined curb and gutter, compaction of subgrade and necessary area grading.

MISCELLANEOUS DETAILS

1985 ARTERIAL SIDEWALK  
PROJECT No. 472-76-245-8487-000-000-C01



FILMED FROM THE BEST AVAILABLE COPY