

1988 ARTERIAL SIDEWALK

PROJECT NO. 472-76-245-81833-000-000-OCI INDEX # 606111

CITY OF WICHITA, KANSAS
M.E. LINDEBAK - CITY ENGINEER

LOCATIONS

GENERAL NOTES

1. INFORMATION SHOWN ON PLANS NOT DIRECTLY RELATED TO THE CONSTRUCTION OF SIDEWALKS & WHEELCHAIR RAMPS IS NOT A PART OF THIS CONTRACT AND SHALL BE CONSIDERED AS DELETED.
2. EXACT LOCATION AND GRADE TO BE DETERMINED BY THE FIELD ENGINEER AT TIME OF CONSTRUCTION.
3. ALL EARTHWORK & COMPACTION OF EARTHWORK NECESSARY TO COMPLETE THIS PROJECT IS TO BE SUBSIDIARY TO OTHER BID ITEMS.
4. ALL AREAS DISTURBED BY THE CONTRACTOR SHALL BE RESTORED TO A CONDITION ACCEPTABLE TO THE ENGINEER. THIS WORK SHALL BE SUBSIDIARY TO OTHER BID ITEMS.
5. ALL GRASSED AREAS DISTURBED BY THE CONSTRUCTION OF THE IMPROVEMENTS UNDER THIS CONTRACT SHALL BE REPLANTED WITH REBEL II FESCUE GRASS SEED AT AN APPLICATION RATE OF 10lbs/1000 S.F. FERTILIZER SHALL BE 16-20-6 APPLIED AT A RATE OF 10lbs/1000SF.
6. SAWED JOINT REQUIRED TO FACILITATE REMOVAL OF EXISTING PAVEMENTS WILL NOT BE PAID FOR DIRECTLY AND THIS COST SHALL BE CONSIDERED AS SUBSIDIARY TO PAY ITEMS OF WORK INCLUDED IN THE CONTRACT.

BASE

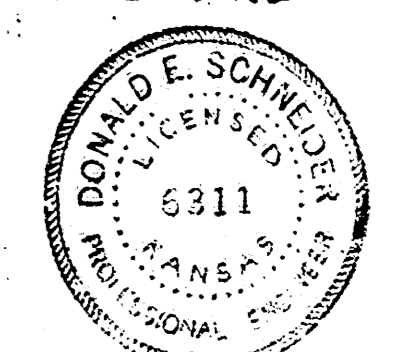
CONTRACT

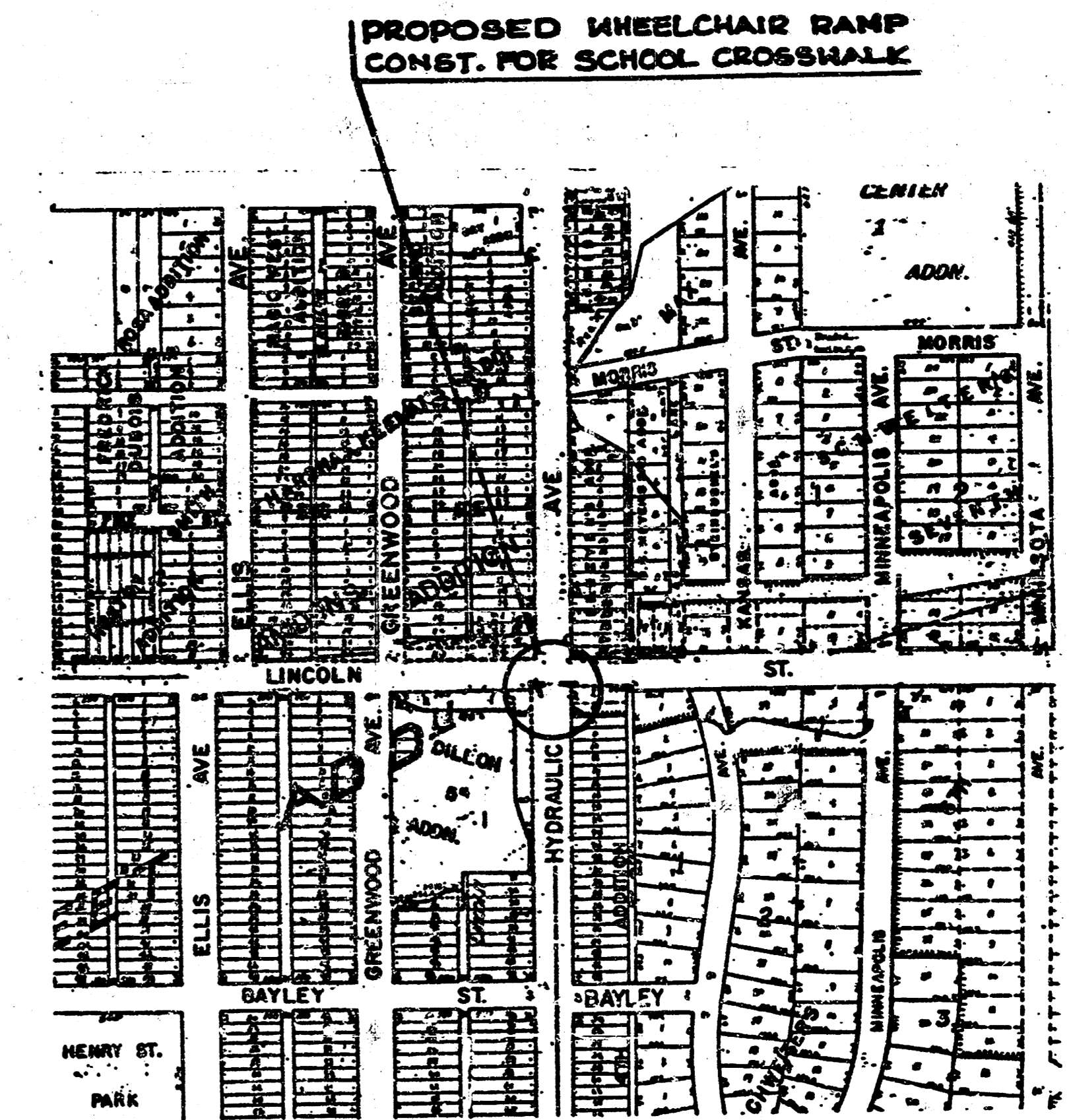
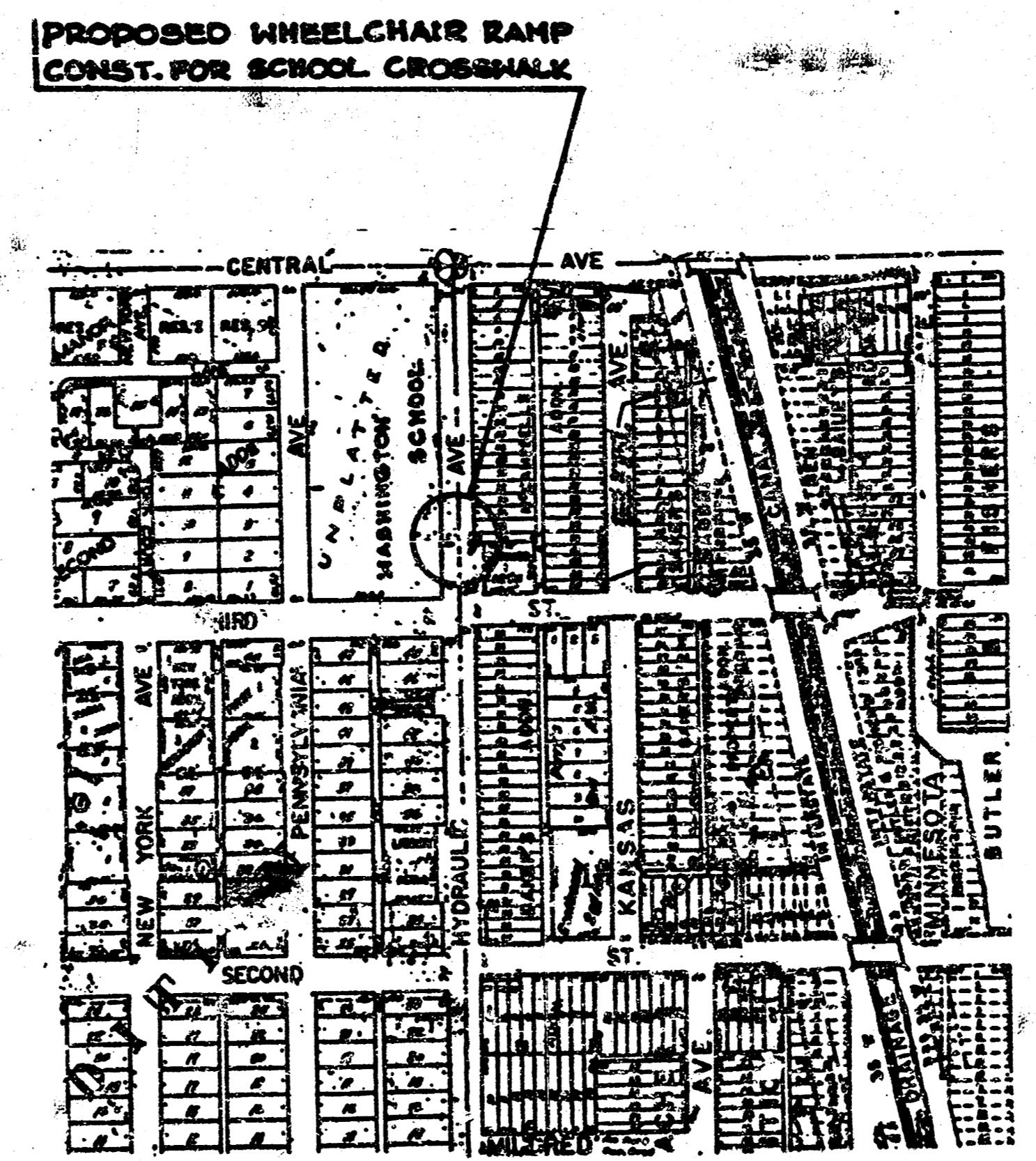
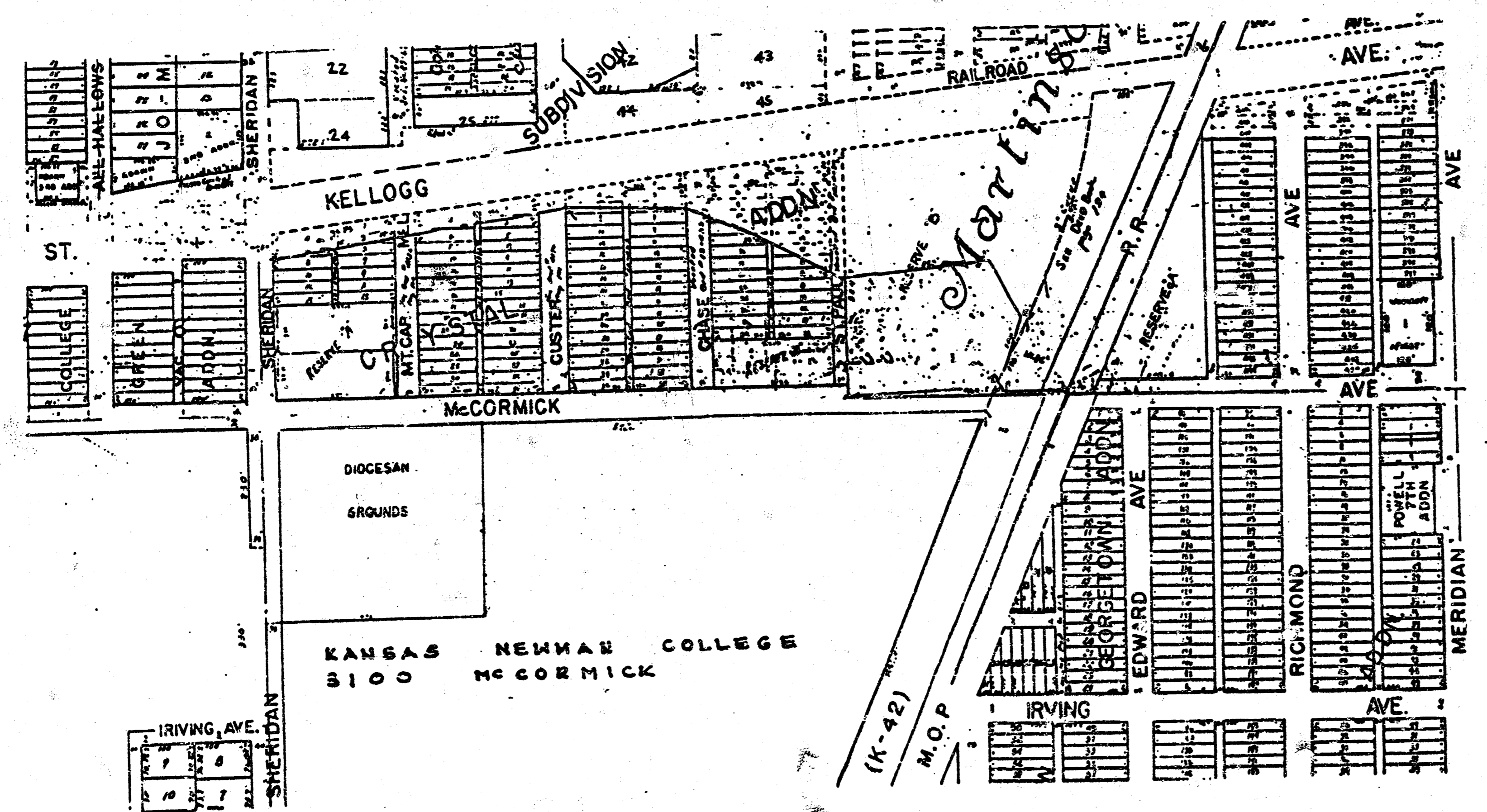
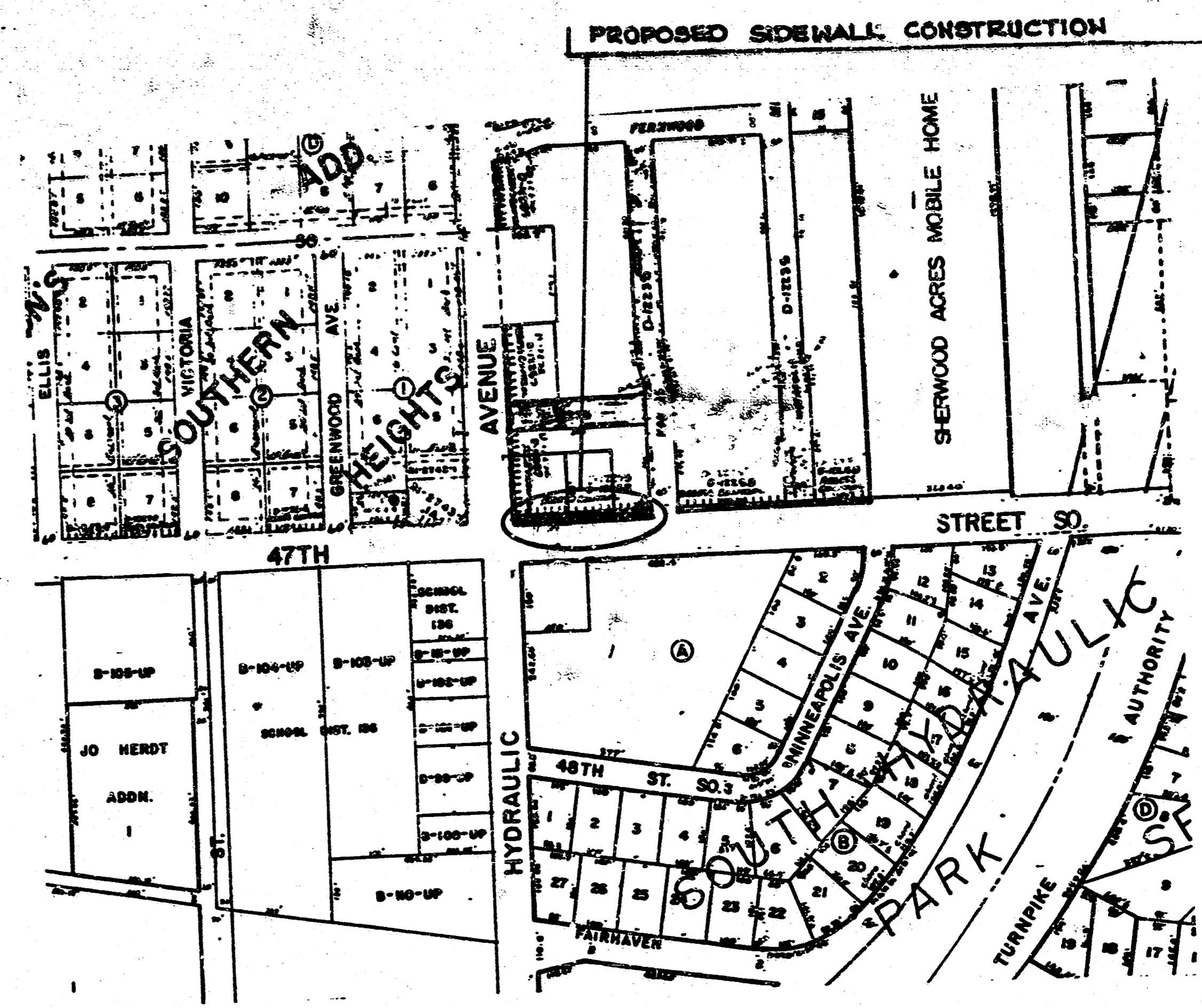
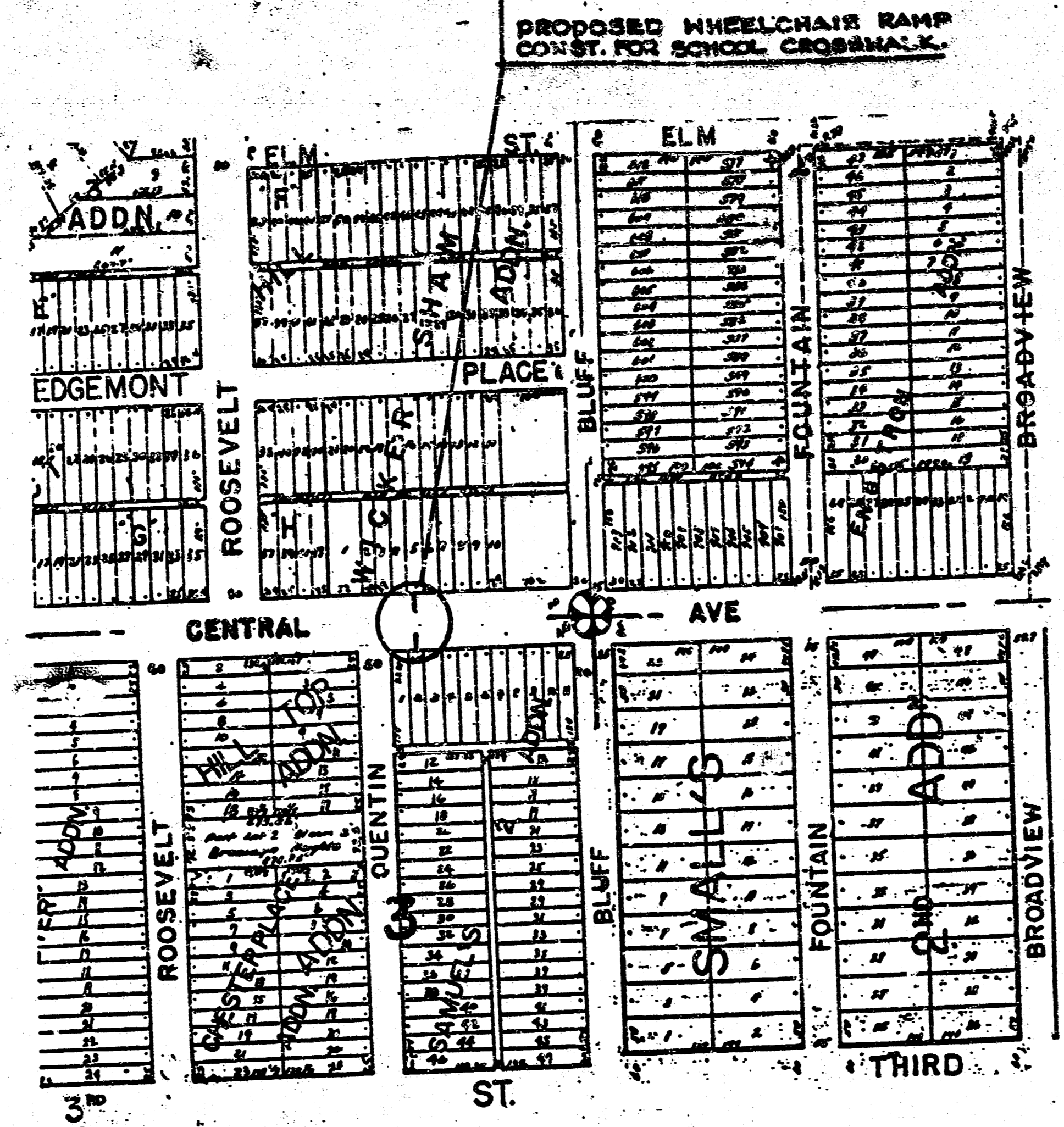
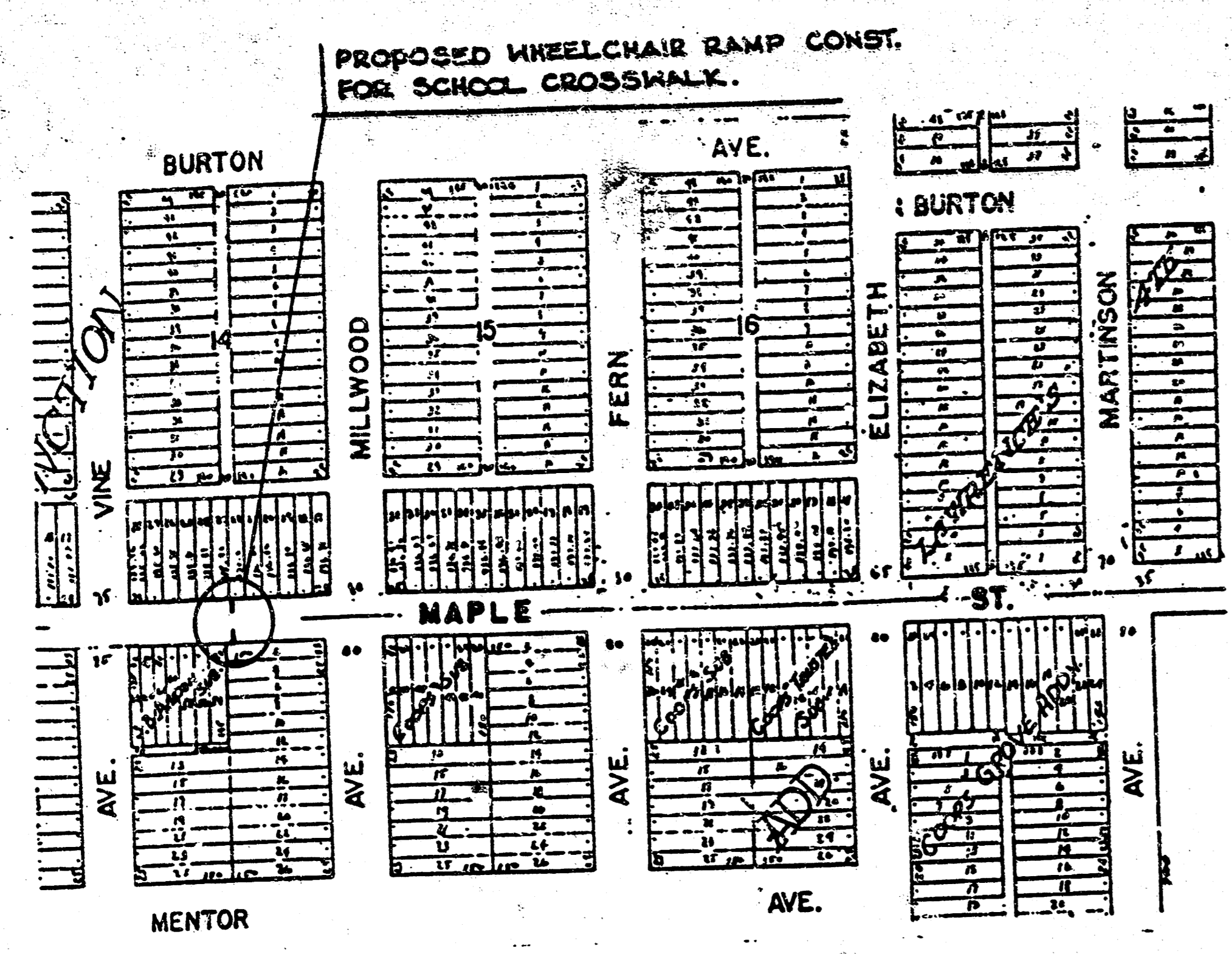
- WHEELCHAIR RAMP CONSTRUCTION FOR SCHOOL CROSSWALK on MAPLE ST. between MILLWOOD and VINE.
- WHEELCHAIR RAMP CONSTRUCTION FOR SCHOOL CROSSWALK on CENTRAL AVE. between QUENTIN and BLUFF.
- SIDEWALK CONSTRUCTION on the North Side of 47th ST. So. between HYDRAULIC AVE and KANSAS AVE.
- WHEELCHAIR RAMP CONSTRUCTION FOR SCHOOL CROSSWALK on HYDRAULIC AVE. between 3RD. ST. and CENTRAL.
- WHEELCHAIR RAMP CONSTRUCTION FOR SCHOOL CROSSWALK at the South Side LINCOLN ST at HYDRAULIC AVE.
- SIDEWALK CONSTRUCTION on the NORTH SIDE of McCORMICK AVE between ALL HALLOWS and MERIDIAN AVE
- SIDEWALK CONSTRUCTION on the SOUTH SIDE of McCORMICK AVE between K-42 HIGHWAY and MERIDIAN AVE.

ADD ALTERNATE SIDEWALK CONSTRUCTION on the SOUTH SIDE of McCORMICK AVE bet ALL HALLOWS and K-42 HIGHWAY.

NOTE: ADD ALTERNATE IS NOT TO BE CONSTRUCTED WITHOUT WRITTEN APPROVAL OF THE CITY ENGINEER.

INDEX SHEET No.	SHEETS DESCRIPTION
1.	COVER SHEET
2.	LOCATION MAP
3.	MISCELLANEOUS DETAILS
4.	PLAN - SCHOOL CROSSWALK ON MAPLE ST. MILLWOOD & VINE
5.	PLAN - SCHOOL CROSSWALK ON CENTRAL AVE bet QUENTIN & BLUFF.
6.	PLAN - SIDEWALK CONSTR. ON N. SIDE 47th ST. So. bet HYDRAULIC & KANSAS
7.	PLAN - SCHOOL CROSSWALK ON HYDRAULIC bet 3RD & CENTRAL
8.	PLAN - WHEELCHAIR RAMP CONSTR. of S. SIDE LINCOLN at HYDRAULIC
9.	PLAN - SIDEWALK CONSTR. ON THE N. SIDE OF McCORMICK AVE bet ALL HALLOWS & MERIDIAN PLAN - SIDEWALK CONSTR. ON THE S. SIDE OF McCORMICK AVE bet K-42 HIGHWAY & MERIDIAN AVE.
	ADD ALTERNATE PLAN - SIDEWALK CONSTR. ON THE SOUTH SIDE OF McCORMICK AVE bet ALL HALLOWS AND K-42 HIGHWAY.



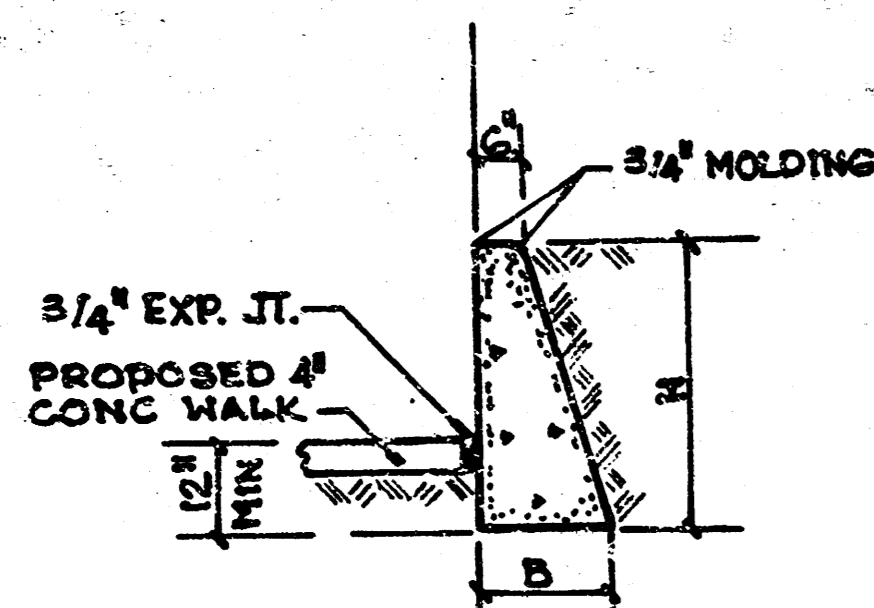


ADD ALTERNATE

1988	ARTERIAL	SIDEWALK
LOCATION	MAP	
PROJECT NUMBER		
472-76-245-61533-000-000-001		

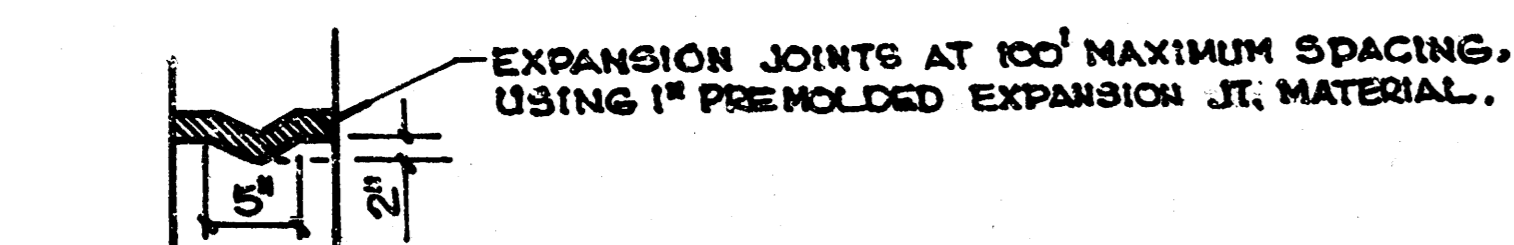
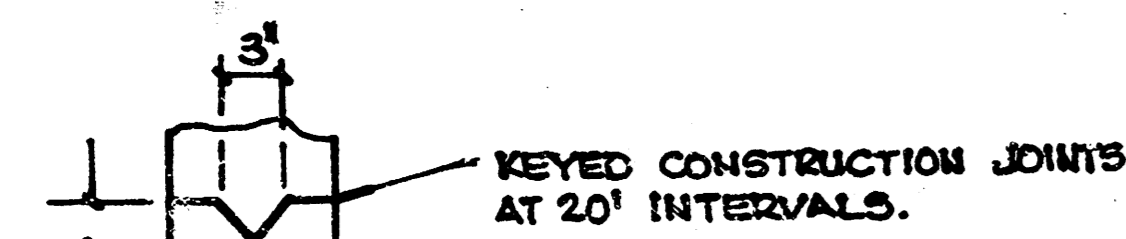
FILMED FROM THE BEST AVAILABLE COPY

NOTE: ANY FENCE REMOVED IS TO BE SALVAGED AND GIVEN TO THE ADJACENT PROPERTY OWNER.



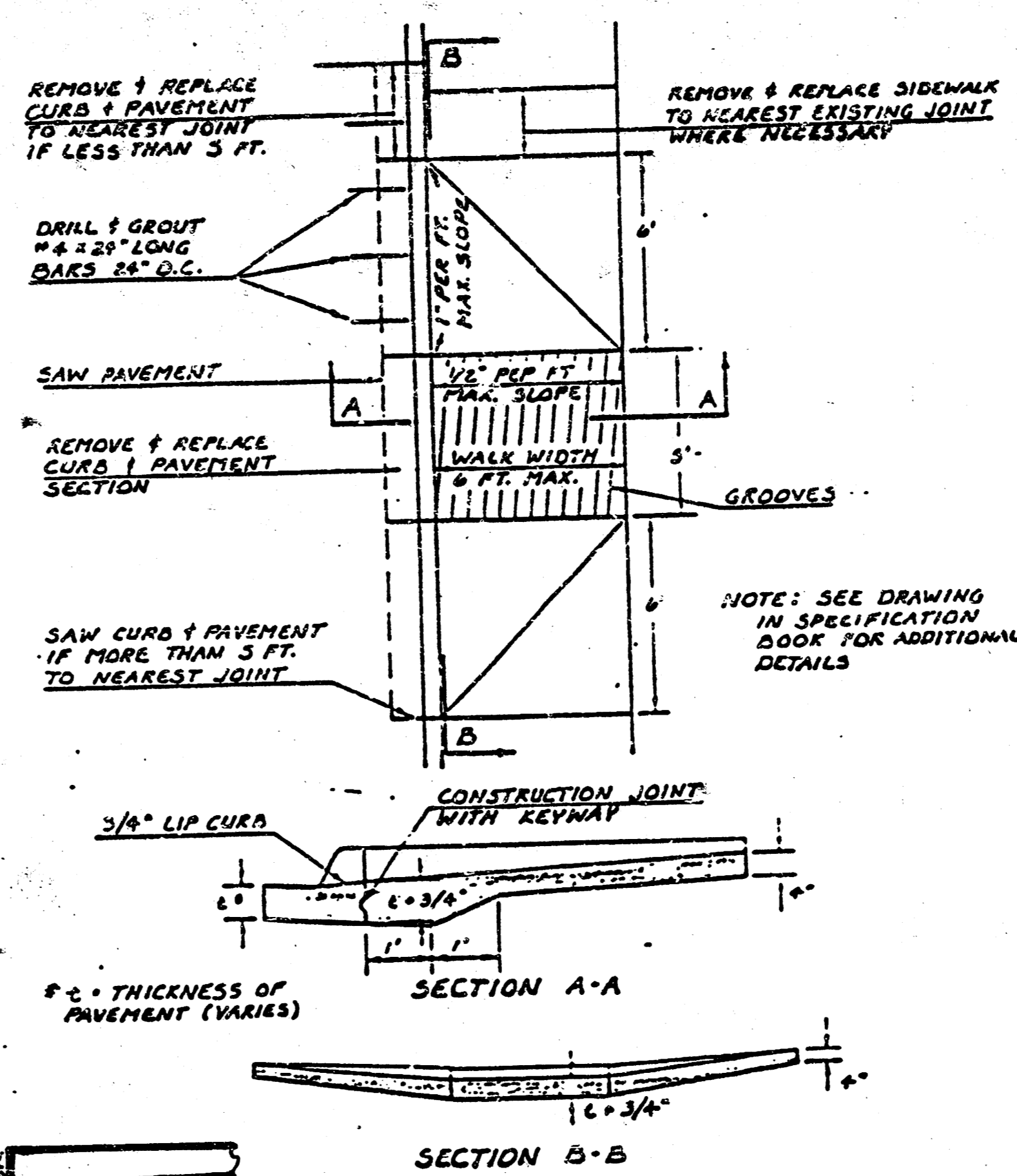
DIMENSIONS		C.Y. CONC
A	B	FOOT
1'-0"	10"	0.037
1'-0"	11"	0.046
2'-0"	18"	0.059
2'-0"	17"	0.059
2'-0"	15 1/2"	0.104
3'-0"	20"	0.120

NOTE: CONCRETE USED IN RETAINING WALLS SHALL BE STD. CONCRETE PAVING MIX.

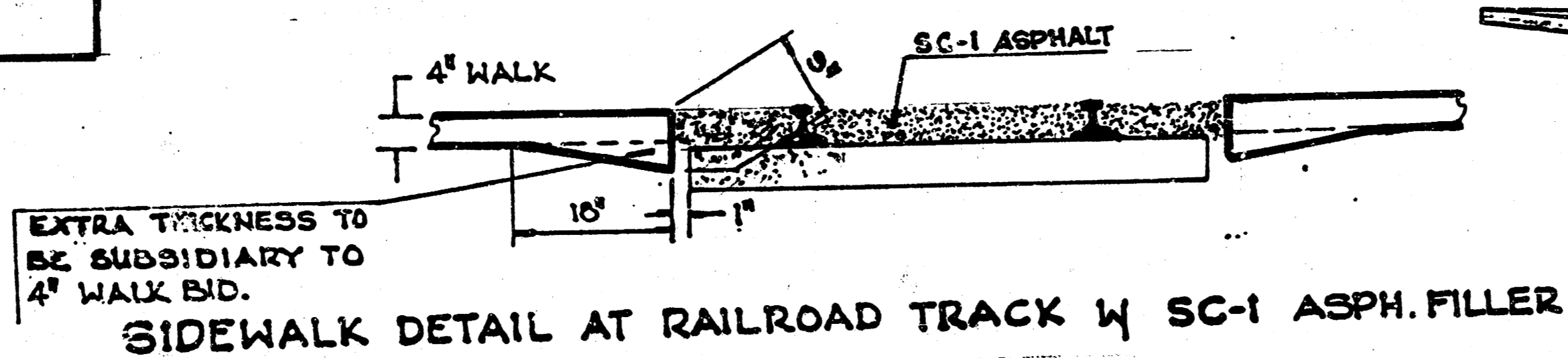
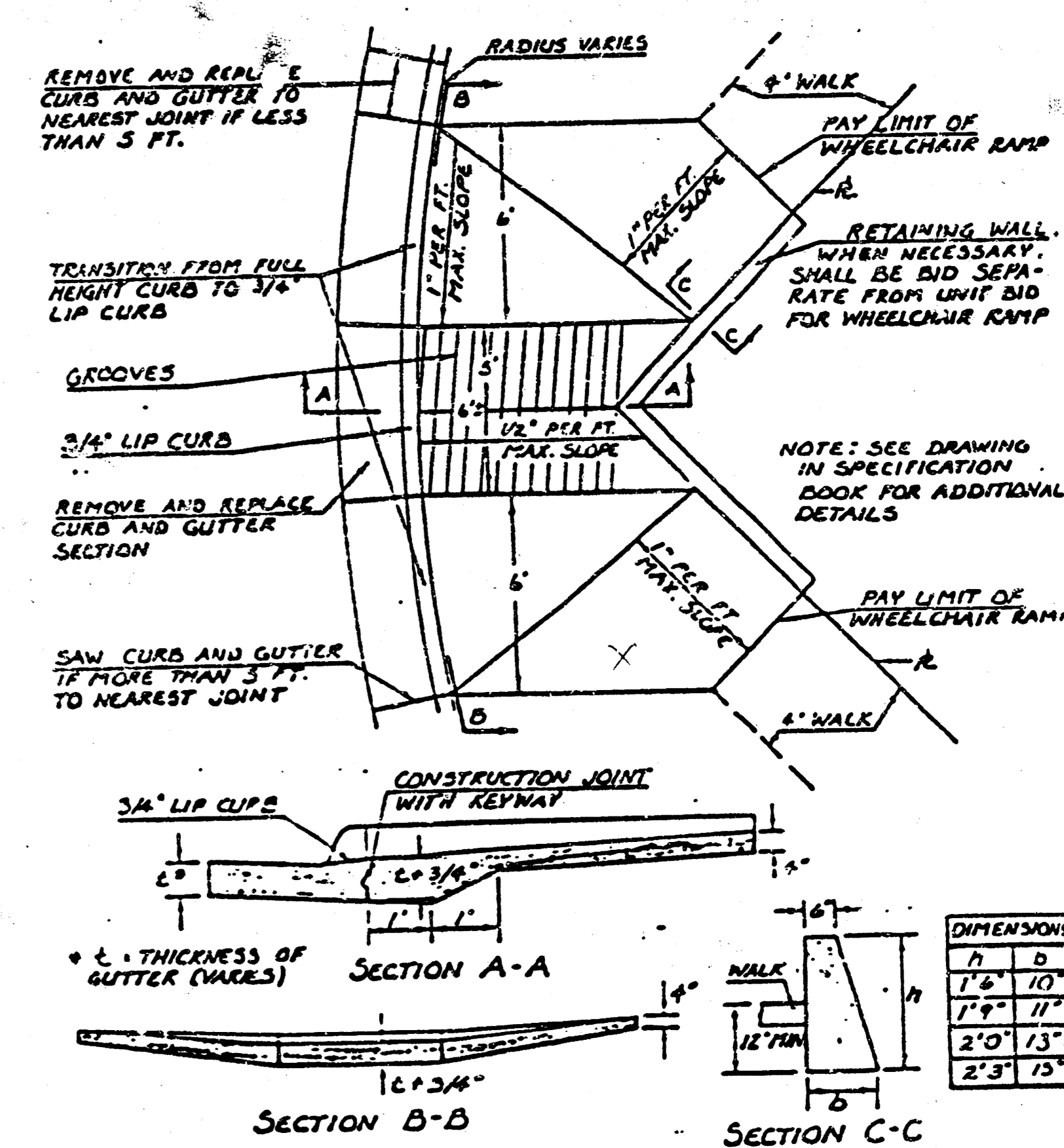


GRAVITY TYPE RETAINING WALL DETAIL

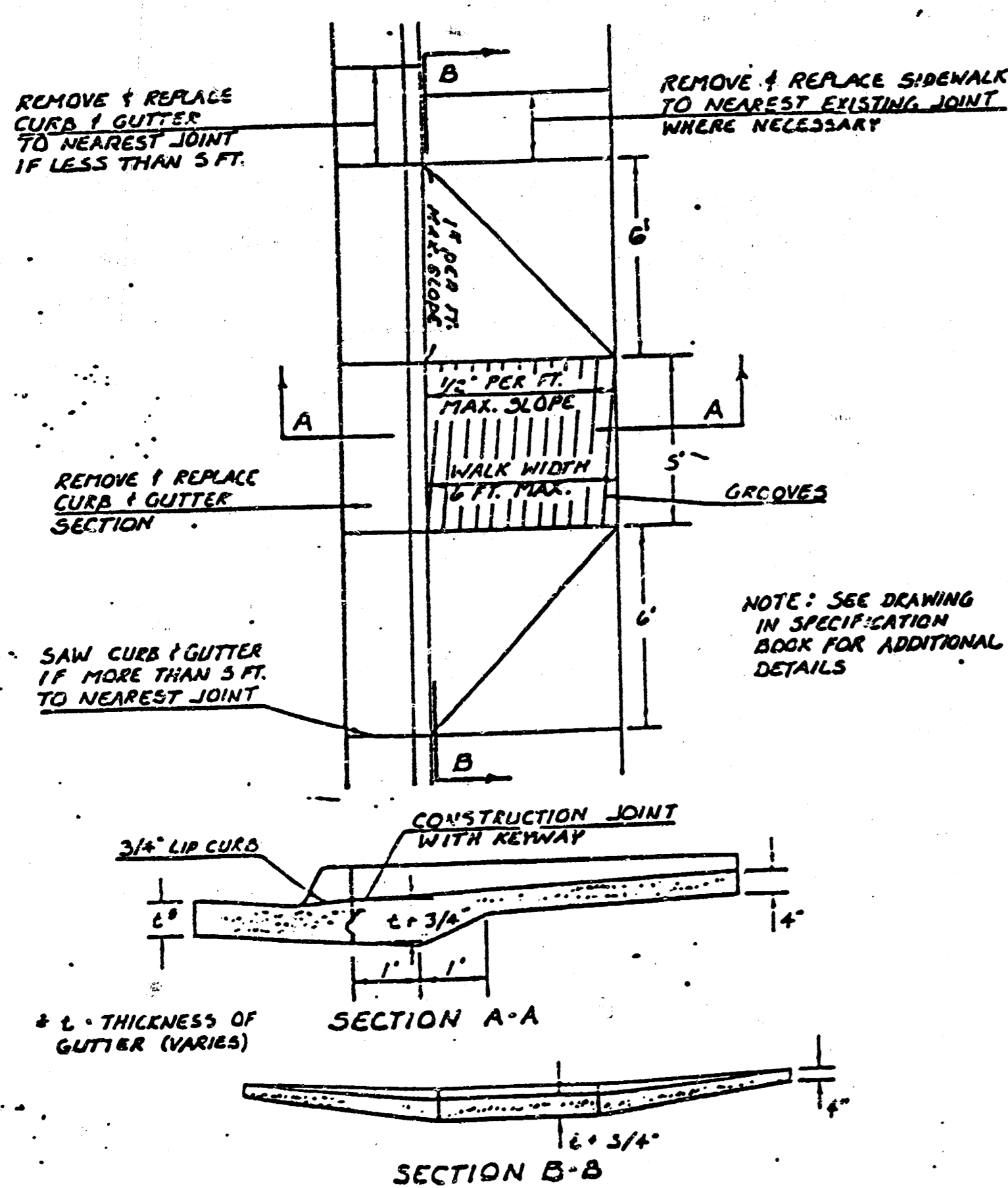
STANDARD WHEELCHAIR RAMP CONSTRUCTION DETAIL FOR CONCRETE STREETS WITH MONOLITHIC CURB AND FULL WALK



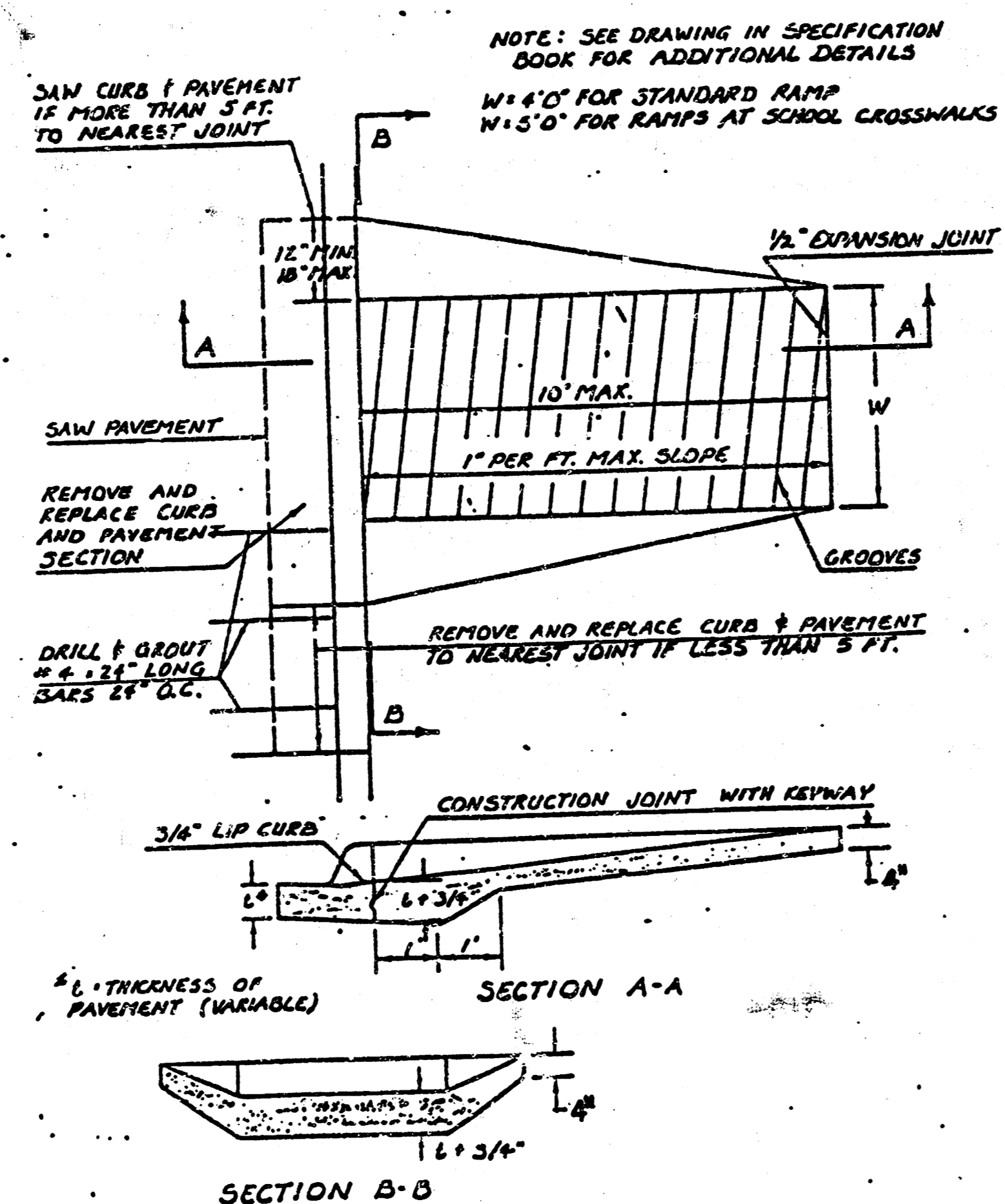
STANDARD WHEELCHAIR RAMP CONSTRUCTION DETAIL FOR STREET WITH COMBINED CURB AND GUTTER ON RADIUS WITH 6 INCH FROM BACK OF CURB TO PROPERTY CORNER



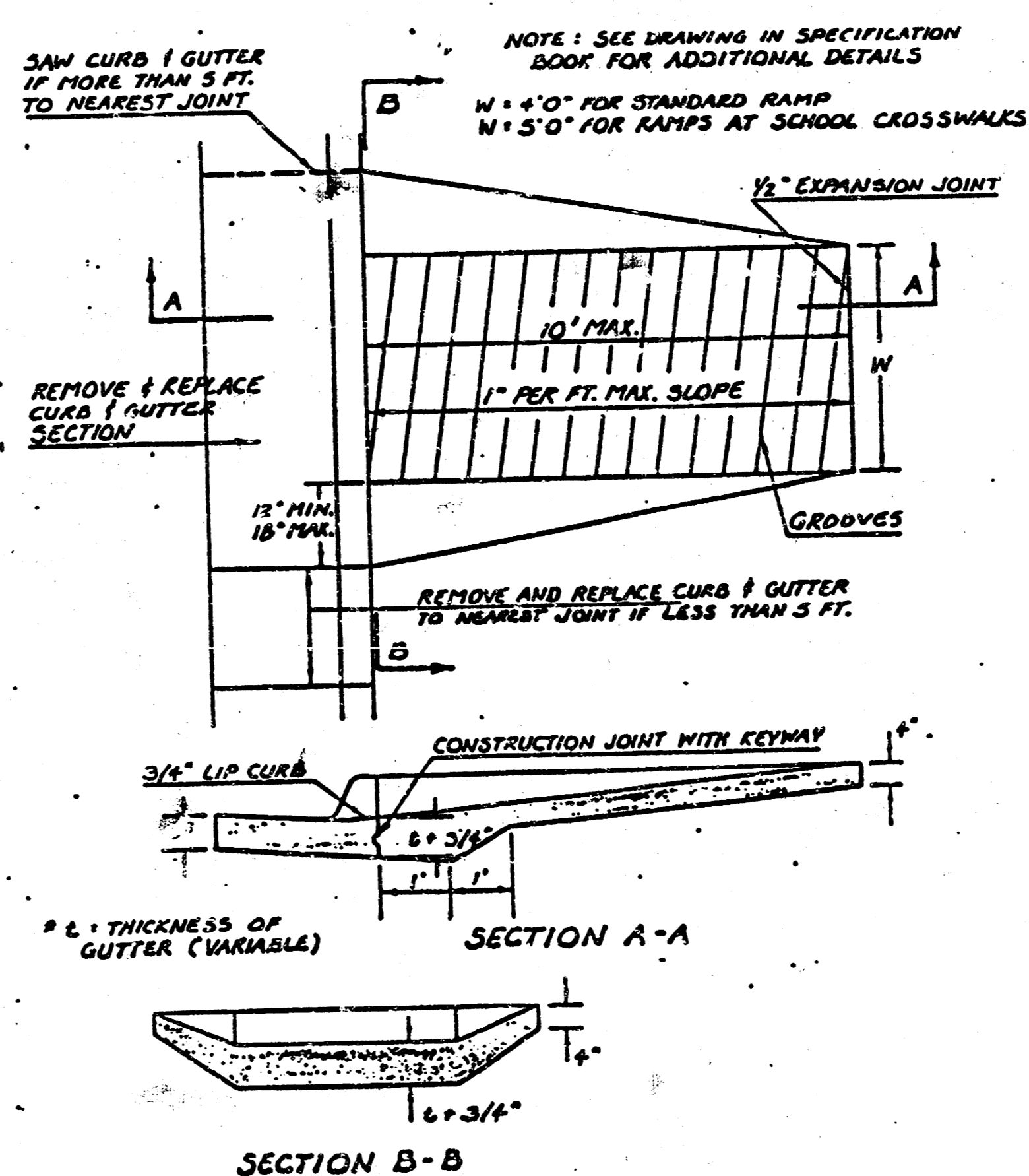
STANDARD WHEELCHAIR RAMP CONSTRUCTION DETAIL FOR STREETS WITH COMBINED CURB & GUTTER AND FULL WALK



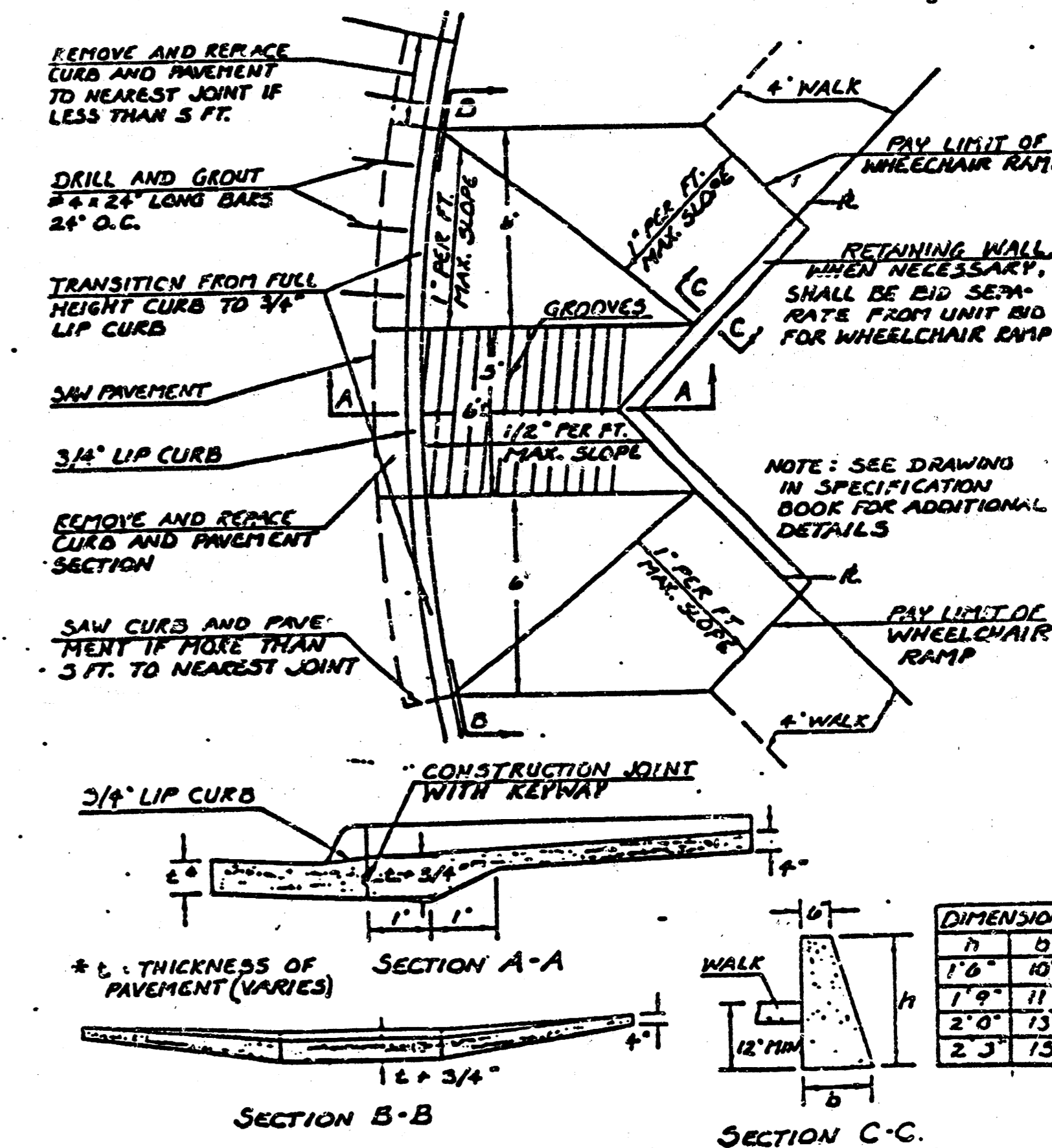
STANDARD WHEELCHAIR RAMP CONSTRUCTION DETAIL FOR CONCRETE STREETS WITH MONOLITHIC CURB



STANDARD WHEELCHAIR RAMP CONSTRUCTION DETAIL FOR STREETS WITH COMBINED CURB & GUTTER



STANDARD WHEELCHAIR RAMP CONSTRUCTION DETAIL FOR CONCRETE STREETS WITH MONOLITHIC CURB ON RADIUS WITH 6 INCH FROM BACK OF CURB TO PROPERTY CORNER

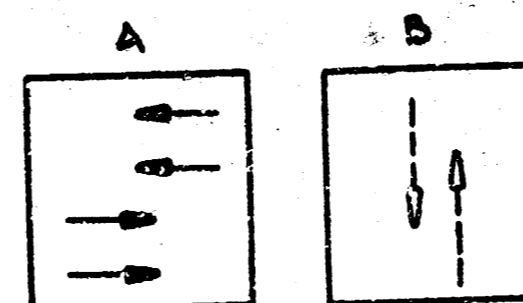


NOTE: THE COST OF ALL WORK INDICATED ON THIS SHEET RELATED TO WHEEL CHAIR RAMP CONSTRUCTION SHALL BE INCLUDED IN THE UNDERBID FOR WHEELCHAIR RAMP. WHICH PRICE SHALL INCLUDE ALL COSTS OF REMOVING AND RECONSTRUCTING EXISTING PAVEMENT & MONOLITHIC CURB, COMPACTION OF SUBGRADE AND NECESSARY AREA GRADING.

MISCELLANEOUS DETAILS

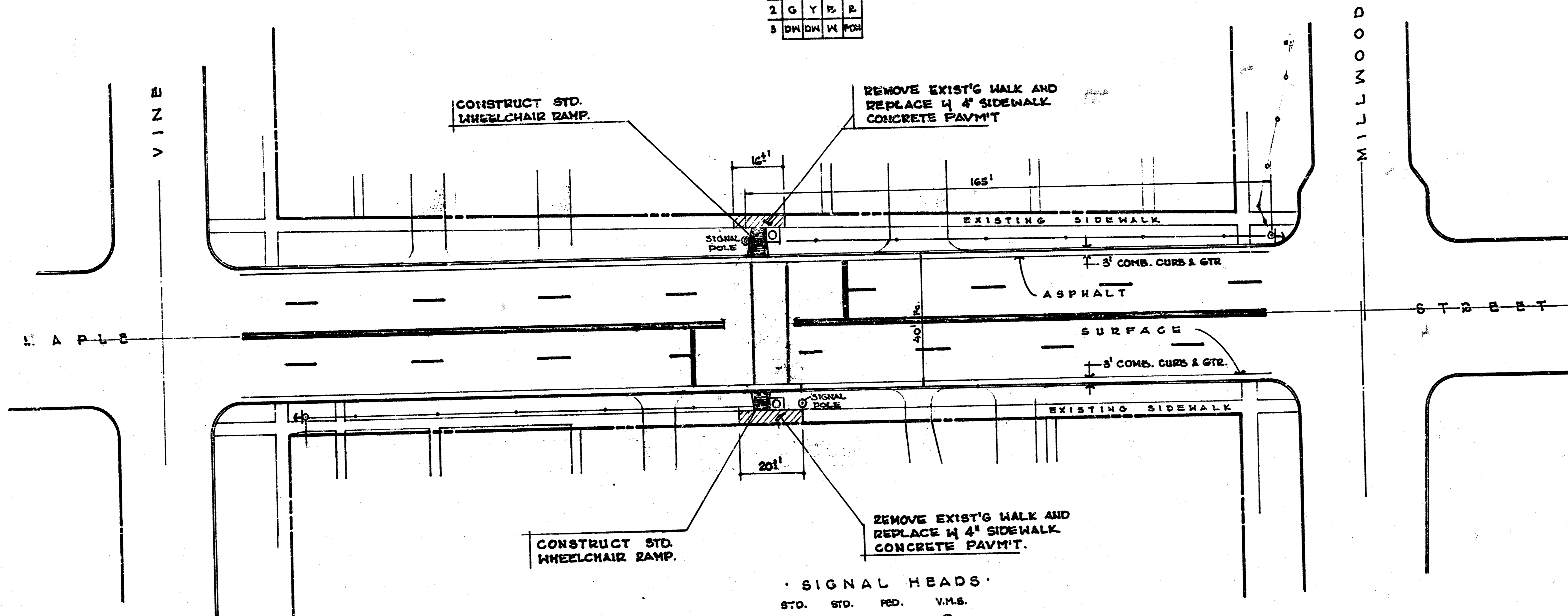
1988 ARTERIAL SIDEWALK
PROJECT No. 472-76-245-81633-000-000-001

PHASE DIAGRAM

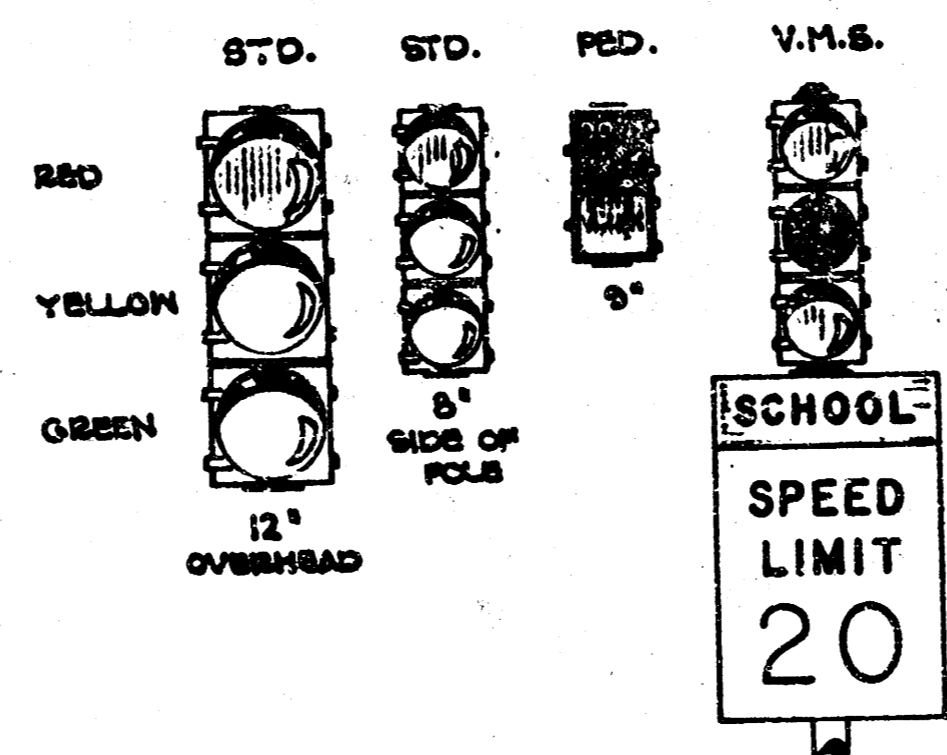


COLOR SEQUENCE

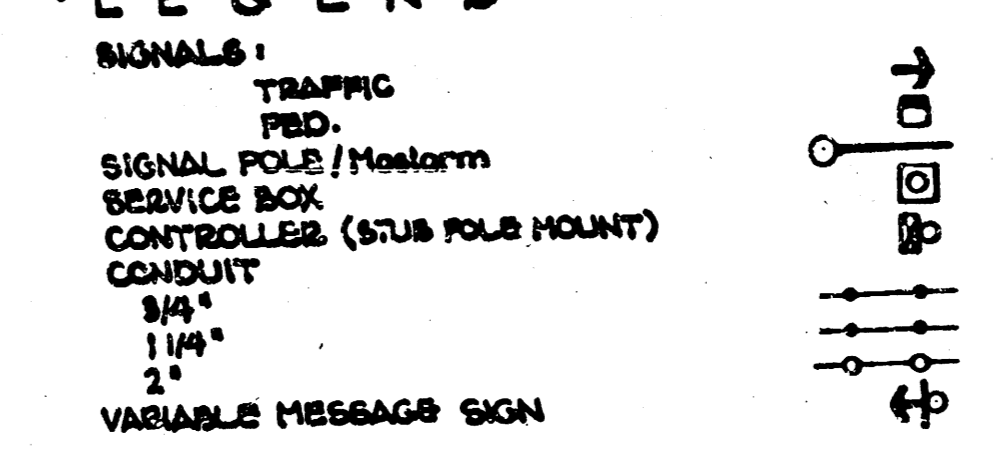
	A	B
1	G	R
2	Y	P
3	DN	DN



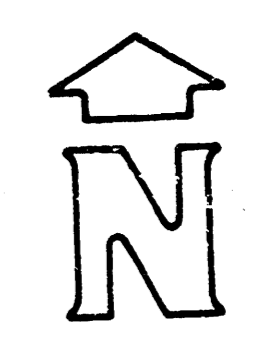
SIGNAL HEADS



LEGEND



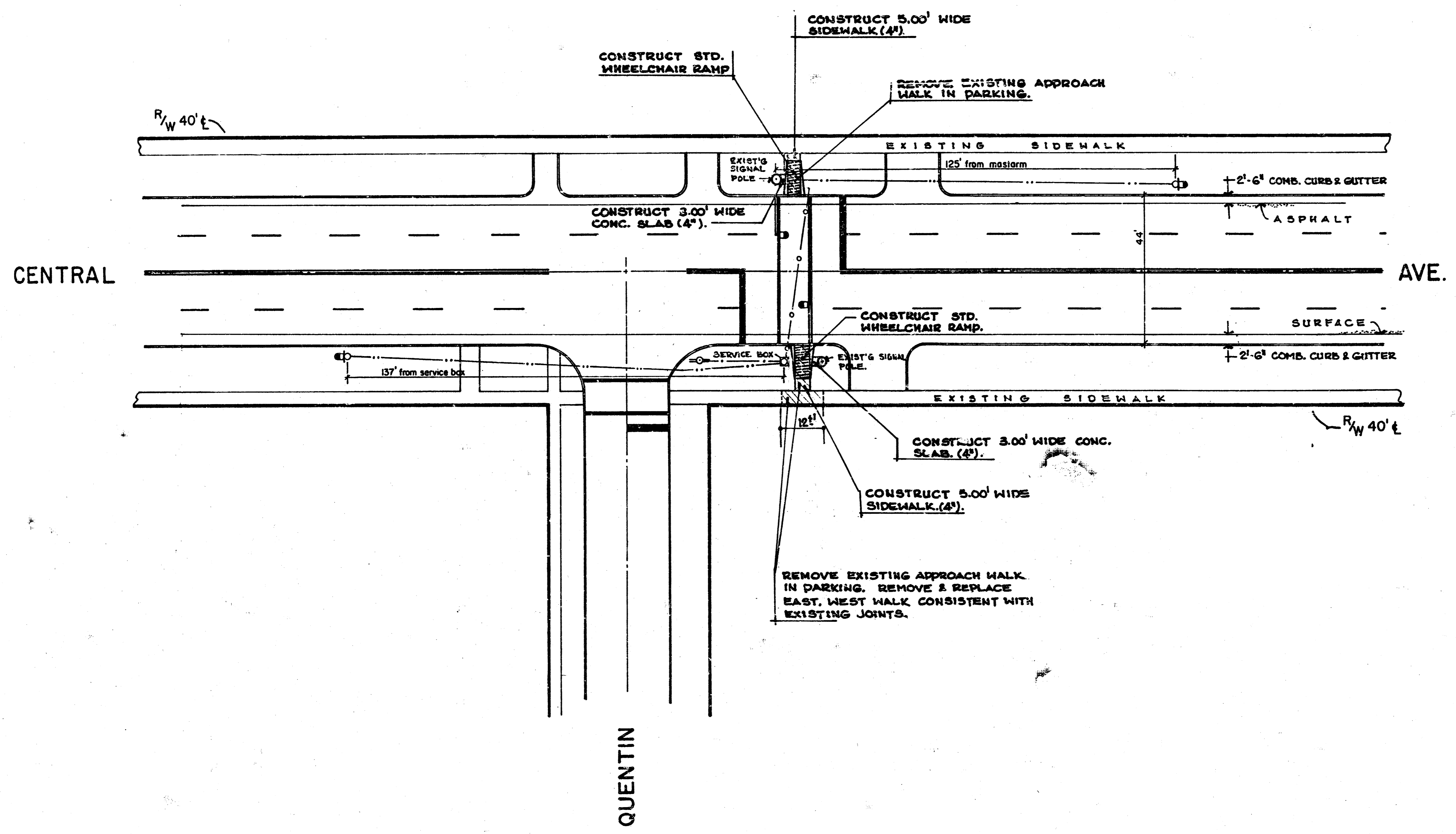
NOTE:
USE EXISTING POWER SOURCE AND CONDUIT
RUN TO N.E. V. 13. (IF POSSIBLE)
METER ADDRESS 801 S. MILLWOOD



472-76-245-81835-000-000-001

MAPLE between MILLWOOD and VINE Midblock School Walk Signal		
SCALE 1"=20'	APPROVED BY	DATE Sept. 81
DRAWN BY Egoi		REVISED
DRAWING NUMBER		6-81-12

FILMED FROM THE BEST AVAILABLE COPY

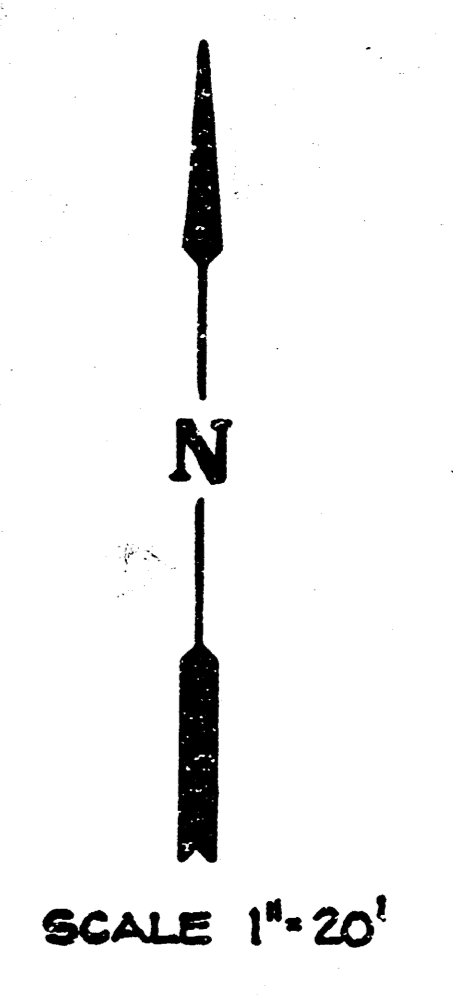
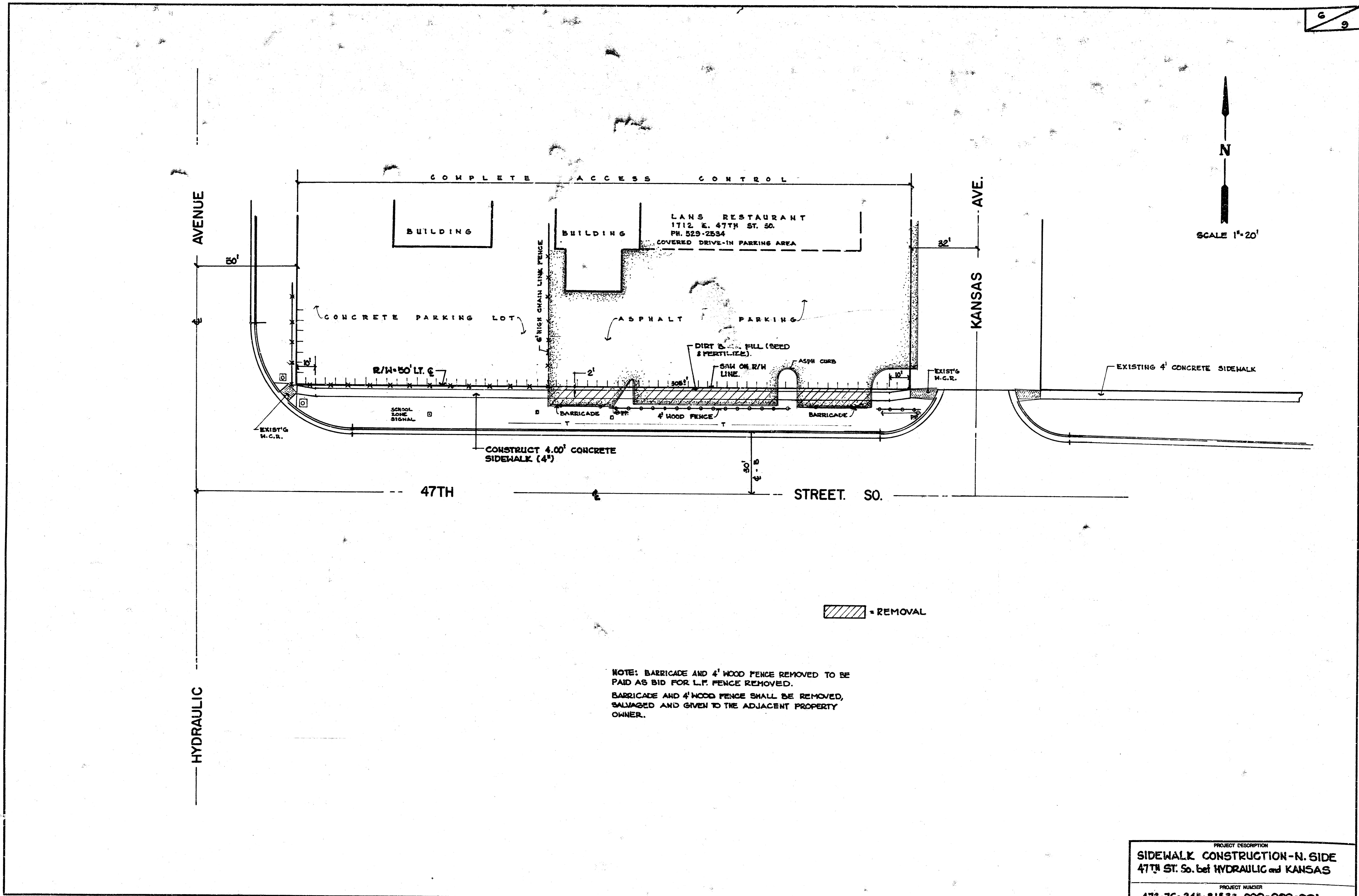


- EQUIP. FURNISHED BY CITY
 2 - 3-sec. 8" flashing signal
 2 - School Speed Limit 20 sign
 2 - When Flashing sign
- EQUIP. FURNISHED BY CONTRACTOR
 280' - 1 1/4" rigid steel conduit
 350' - 3-c #10 AWG cable
 80' - pushing 1 1/4" conduit
 200' - trenching
 2 - ground rods w/clamps & wire
 1 - cu.yds. concrete
 1 - time clock (installed by city)
 1 - flasher unit
 2 - signal mounting bracket
 2 - 10' alum. ped. and base in place

- CURBLINE
- o — 2" CONDUIT
- . — 3/4" CONDUIT
- o — MASTARM W/POLE
- SIGNAL HEAD (traffic)
- SIGNAL HEAD (pedestrian)
- ⊗ CONTROLLER
- o — POWER POLE
- SERVICE BOX
- ⊕ VARIABLE MESSAGE SIGN
- ... 1/4" CONDUIT

CENTRAL Between Quentin & Bluff		
SCALE 1" = 20'	APPROVED BY	DATE
DRAWN BY		REVISED
PROJ. No. 472-76-245-81833-000-000-001		
DRAWING NUMBER		E 77 - 8

FILMED FROM THE BEST AVAILABLE COPY



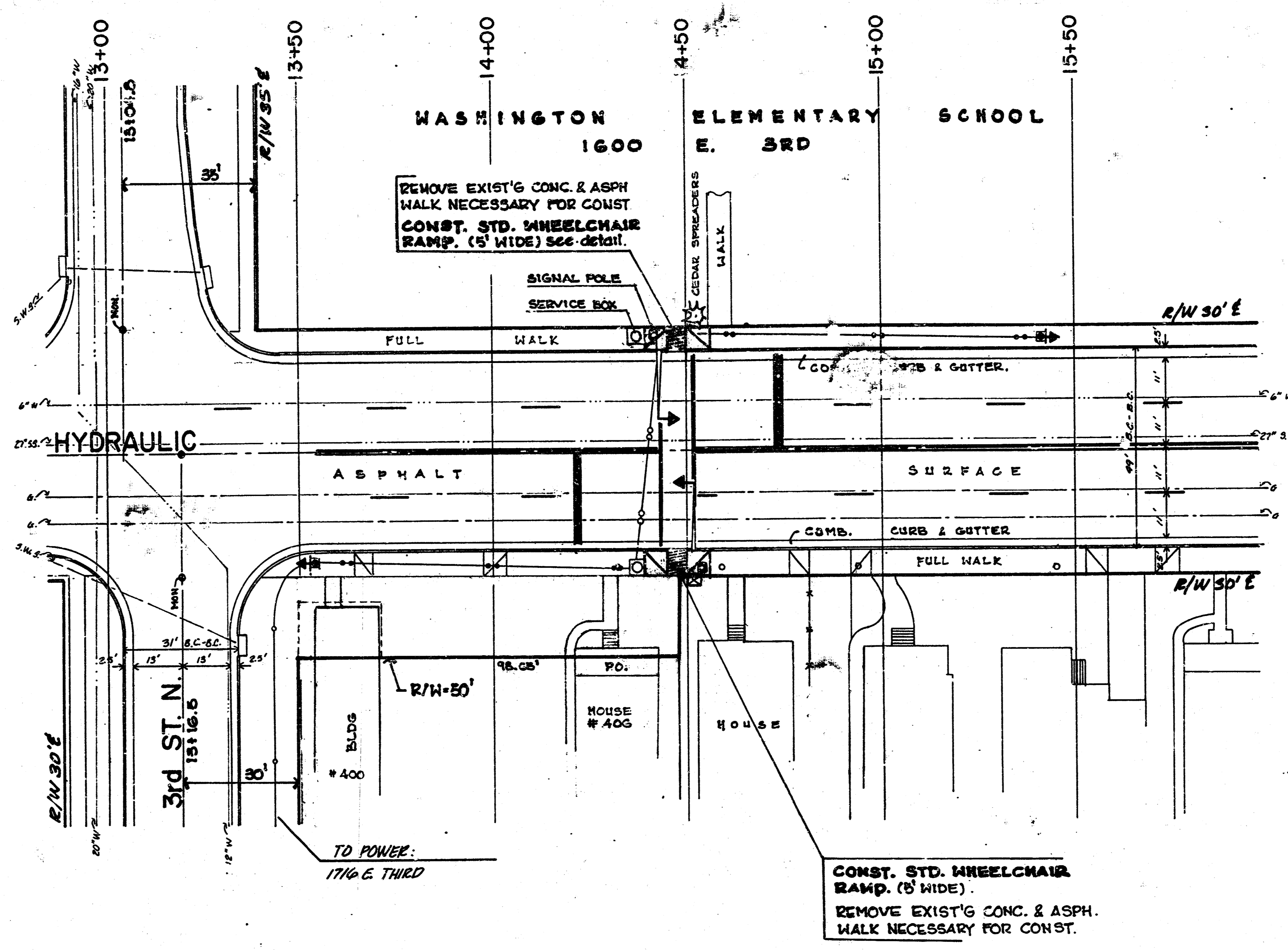
= REMOVAL

NOTE: BARRICADE AND 4' WOOD FENCE REMOVED TO BE PAID AS BID FOR L.F. FENCE REMOVED.
BARRICADE AND 4' WOOD FENCE SHALL BE REMOVED, SALVAGED AND GIVEN TO THE ADJACENT PROPERTY OWNER.

PROJECT DESCRIPTION
SIDEWALK CONSTRUCTION - N. SIDE
47TH ST. So. bet HYDRAULIC and KANSAS

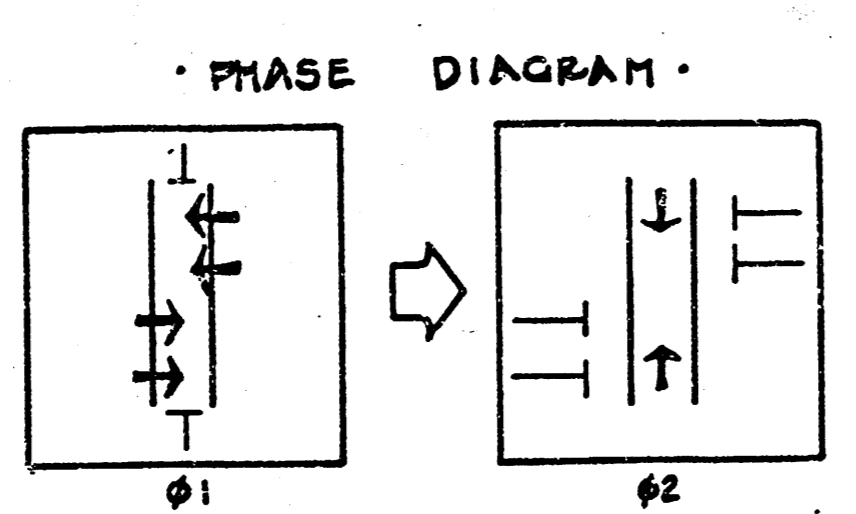
PROJECT NUMBER
472-76-245-81633-000-000-001

FILMED FROM THE BEST AVAILABLE COPY

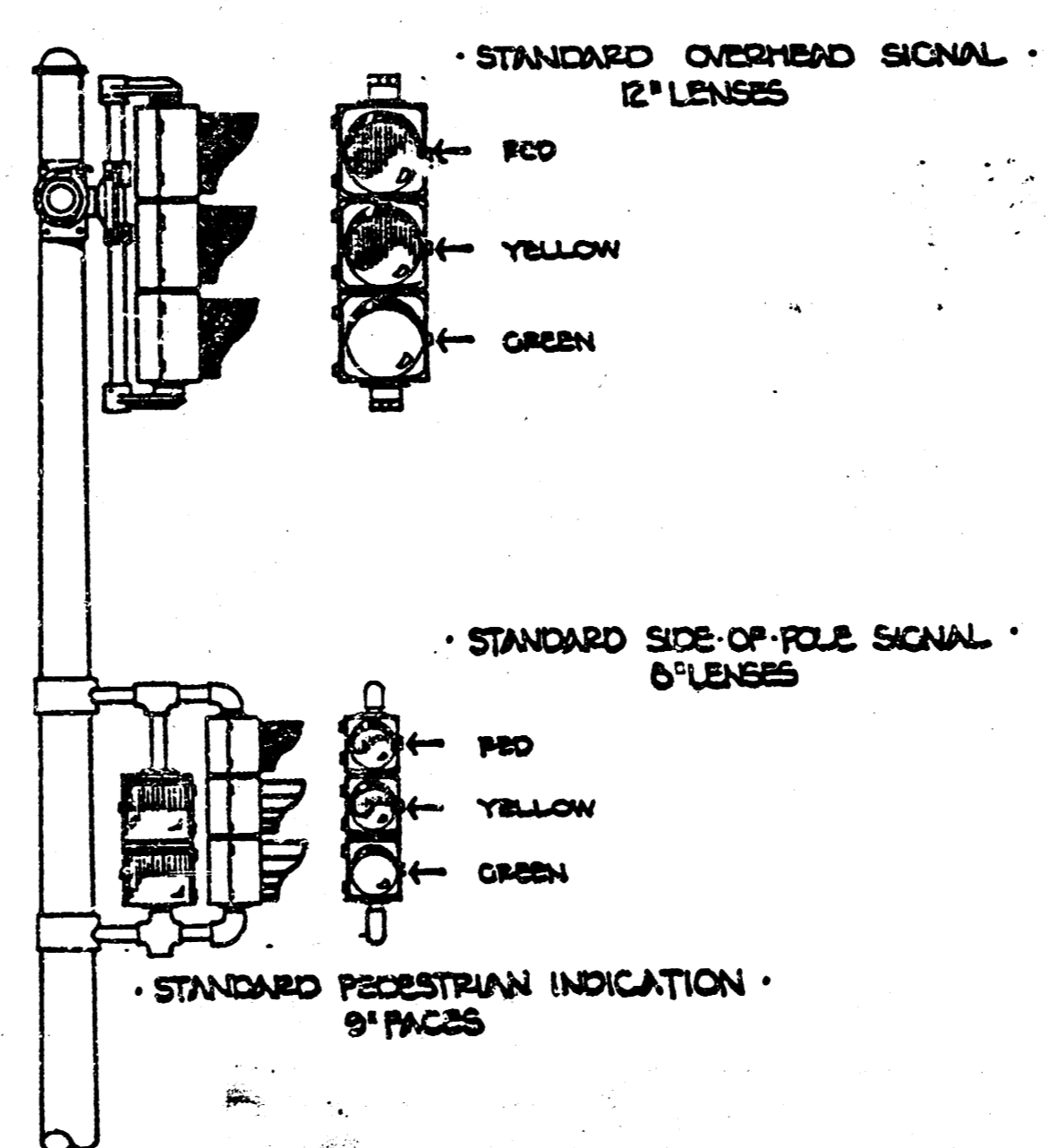
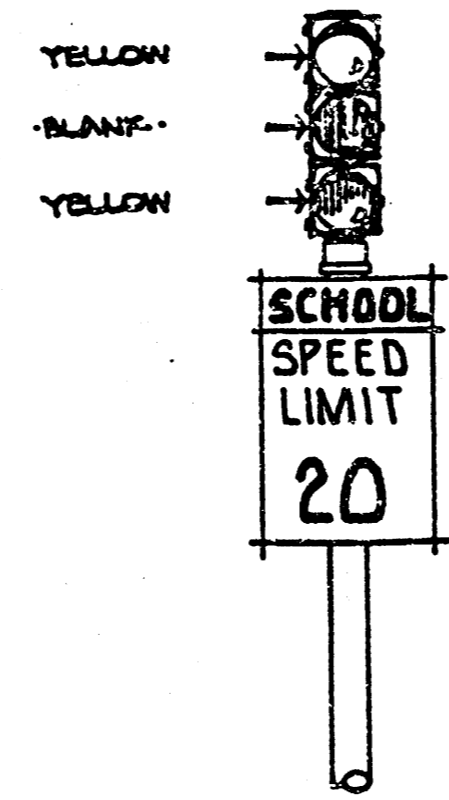


- GENERAL NOTES:**
1. CONTACT THE TRAFFIC ENGINEERING SECTION PRIOR TO RELOCATION OF ANY SIGNAL POLE, CONTROLLER, PEDESTAL SERVICE BOXES, AND/OR CONDUIT.
 2. CONDUIT TO BE PULSED OR JACKED UNDER EXISTING PAVEMENT INCLUDING SIDEWALK, DRIVE APPROACH, ETC. UNLESS OTHERWISE NOTED.
 3. TRAFFIC TO BE CARRIED THROUGH CONSTRUCTION.
 4. STANDARD CONSTRUCTION SIGNING AS OUTLINED IN THE MANIPULATION MANUAL OF THE CITY OF WICHITA AND THE MANUAL ON UNIFORM TRAFFIC CONTROL DEVICES, SHALL BE INSTALLED AND MAINTAINED THROUGHOUT ALL PHASES OF CONSTRUCTION.
 5. THE CONTRACTOR/OR HIS ENGINEER SHALL CONTACT ALL UTILITY COMPANIES WHICH MIGHT BE AFFECTED BY THE INSTALLATION OF THE TRAFFIC SIGNALIZATION PRIOR TO ANY UNDERGROUND INSTALLATION, AND REQUEST THEIR ASSISTANCE IN LOCATING UNDERGROUND PLANT.
 6. THE CITY OF WICHITA SHALL REMOVE EXISTING TRAFFIC SIGNAL EQUIPMENT (EXCEPT AS OTHERWISE NOTED).
 7. SIGNAL INSTALLATION, WHEEL CHAIR RAMPS, WALK SECTIONS, ETC. TO BE INSTALLED AS PER ENGINEERING SPECIFICATIONS.

NOTE: USE CAUTION WHEN TRENCHING - UNDERGROUND UTILITIES MAY BE PRESENT.



STANDARD VARIABLE MESSAGE SIGN - 8' LENSES



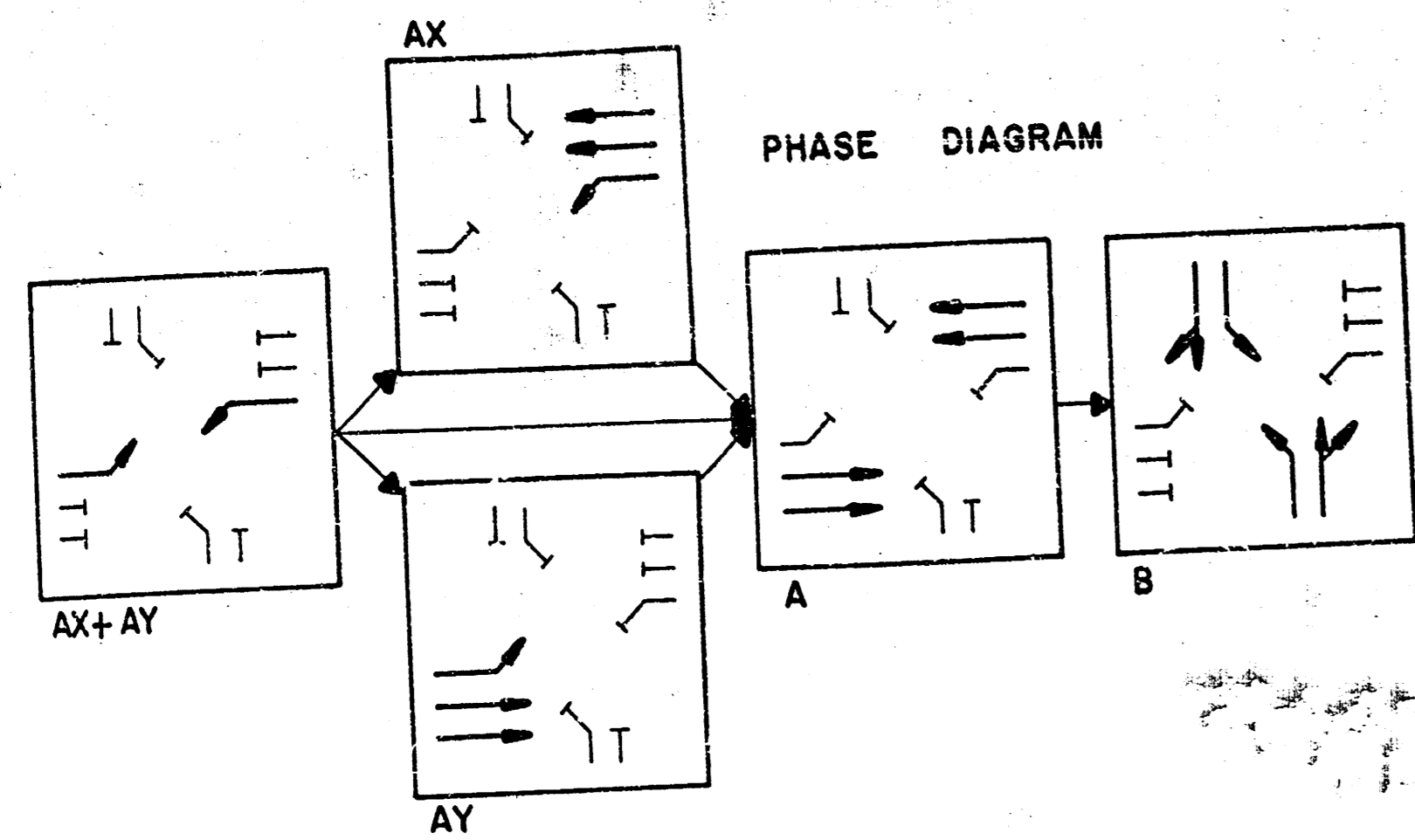
- LEGEND:**
- ⊕ SIGNAL INSTALLATION (BASE, POLE, MOUNT)
 - ← TRAFFIC SIGNAL
 - ⊞ PEDESTRIAN INDICATION
 - ⊞ V.M.S. INSTALLATION
 - ⊞ SERVICE BOX
 - ⊞ CONTROLLER - PEDESTAL MOUNT
 - 3/4" CONDUIT
 - 1 1/4" CONDUIT
 - 1.0" CONDUIT
 - 2.0" CONDUIT



NOTE: INFORMATION SHOWN ON PLAN NOT DIRECTLY RELATED TO THE CONSTRUCTION OF SIDEWALKS AND WHEELCHAIR RAMPS IS NOT PART OF THIS CONTRACT AND SHALL BE CONSIDERED AS DELETED.

PROJECT DESCRIPTION	
HYDRAULIC bet. 3rd & CENTRAL	
WASHINGTON ELEMENTARY	
WHEELCHAIR RAMP CONSTRUCTION	
BOOK NO.	APPROVED BY
DRAWN BY	DATE
PROJ. No. 472-TG-245-81888-000-000-001	
SCALE 1" = 20'	

FILMED FROM THE BEST AVAILABLE COPY

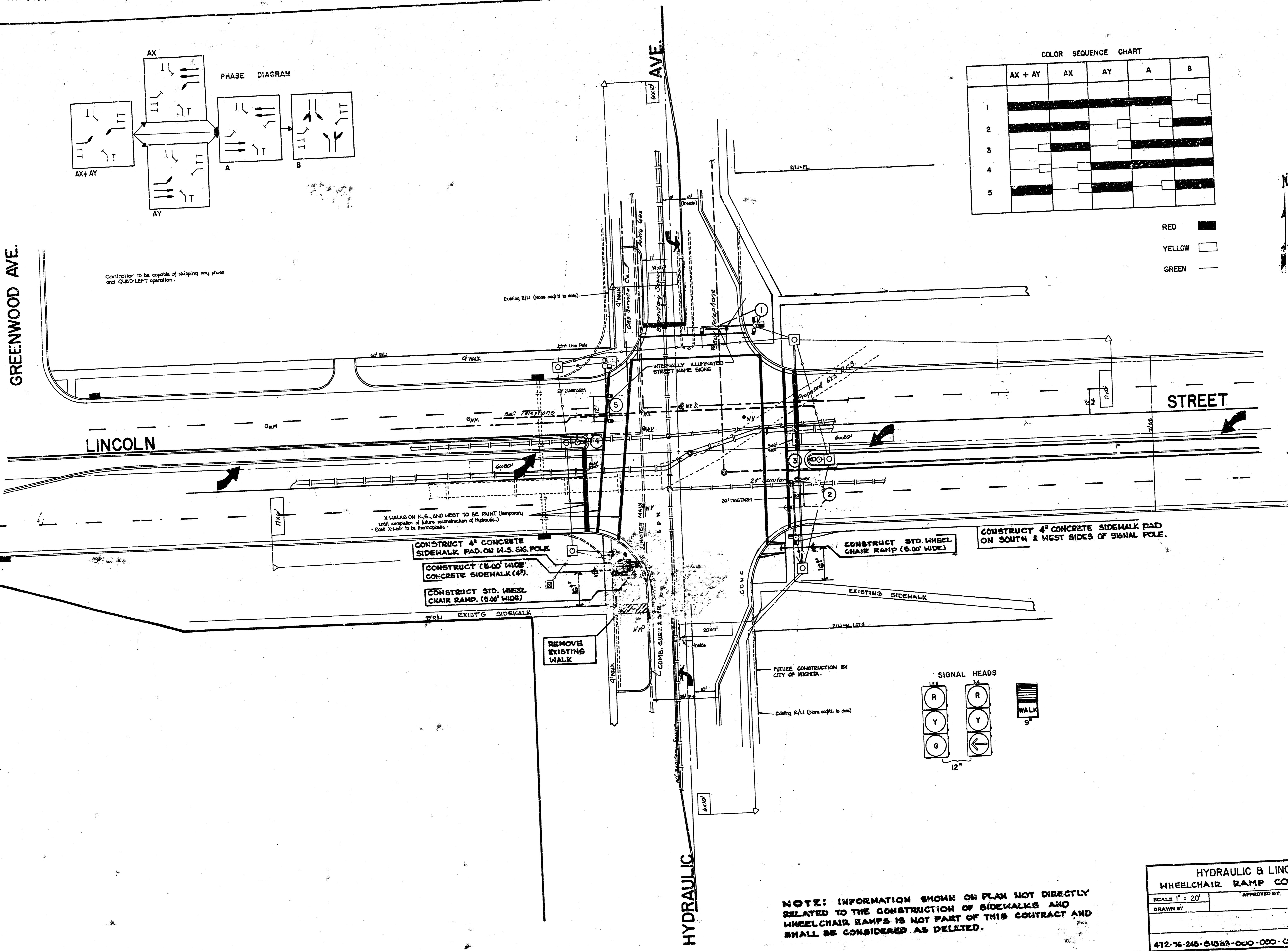


Controller to be capable of skipping any phase and QUAD-LEFT operation.

COLOR SEQUENCE CHART

	AX + AY	AX	AY	A	B
1	█				
2	█				
3		█			
4		█			
5			█		

RED █
YELLOW □
GREEN —



HYDRAULIC & LINCOLN
WHEELCHAIR RAMP CONSTRUCTION

SCALE 1" = 20'

APPROVED BY

DATE APR 76

DRAWN BY

REVISED BY TT

DRAWING NUMBER
E 76 - 15

412-76-245-01553-000-000-001

FILMED FROM THE BEST AVAILABLE COPY

