

# 1990 ARTERIAL SIDEWALK

PROJECT NO. 472 - 82042

CITY OF WICHITA, KANSAS  
M.E. LINDEBAK - CITY ENGINEER

INDEX CODE. 705202

## GENERAL NOTES

1. INFORMATION SHOWN ON PLANS NOT DIRECTLY RELATED TO THE CONSTRUCTION OF SIDEWALKS AND WHEELCHAIR RAMPS IS NOT A PART OF THIS CONTRACT AND SHALL BE CONSIDERED AS DELETED.
2. EXACT LOCATION AND GRADE TO BE DETERMINED BY THE FIELD ENGINEER AT THE TIME OF CONSTRUCTION.
3. ALL EARTHWORK AND COMPACTION OF EARTHWORK NECESSARY TO COMPLETE THIS PROJECT IS TO BE SUBSIDIARY TO OTHER BID ITEMS.
4. ALL AREAS DISTURBED BY THE CONTRACTOR SHALL BE RESTORED TO A CONDITION ACCEPTABLE TO THE ENGINEER.
5. SIDEWALK REMOVAL LIMITS SHALL TERMINATE AT EXISTING JOINTS AS DIRECTED BY THE ENGINEER.
6. SAWED JOINT REQUIRED TO FACILITATE REMOVAL OF EXISTING PAVEMENTS WILL NOT BE PAID FOR DIRECTLY AND THIS COST SHALL BE CONSIDERED AS SUBSIDIARY TO PAY ITEMS OF WORK INCLUDED IN THE CONTRACT.

## LOCATIONS

### BASE

### CONTRACT

WHEELCHAIR RAMP CONSTRUCTION FOR SCHOOL CROSSWALK ON MAIN STREET between 11TH & 12TH STREET. N.

WHEELCHAIR & SIDEWALK RAMP CONSTRUCTION FOR SCHOOL CROSSWALK ON ARKANSAS AVE at 43RD STREET. NORTH.

WHEELCHAIR RAMP CONSTRUCTION FOR SCHOOL CROSSWALK ON 25TH STREET. NORTH between SALINA & BURNS.

WHEELCHAIR RAMP CONSTRUCTION at 13TH STREET. NORTH. and WACO AVENUE.

WHEELCHAIR RAMP CONSTRUCTION at DOUGLAS and OLIVER.

WHEELCHAIR RAMP CONSTRUCTION at 9TH ST and McLEAN BLVD.

(ASPHALT WALK CONSTRUCTION) FROM CARP RD TO JOHN MACK BRIDGE on West Side of U.S. 81.

SIDEWALK CONSTRUCTION on 13TH ST. N. (North Side) From ST. PAUL To McLEAN BLVD. (4.00' WIDE SIDEWALK)

SIDEWALK CONSTRUCTION on 21ST ST. N. (South Side) West of SHELTON STREET.

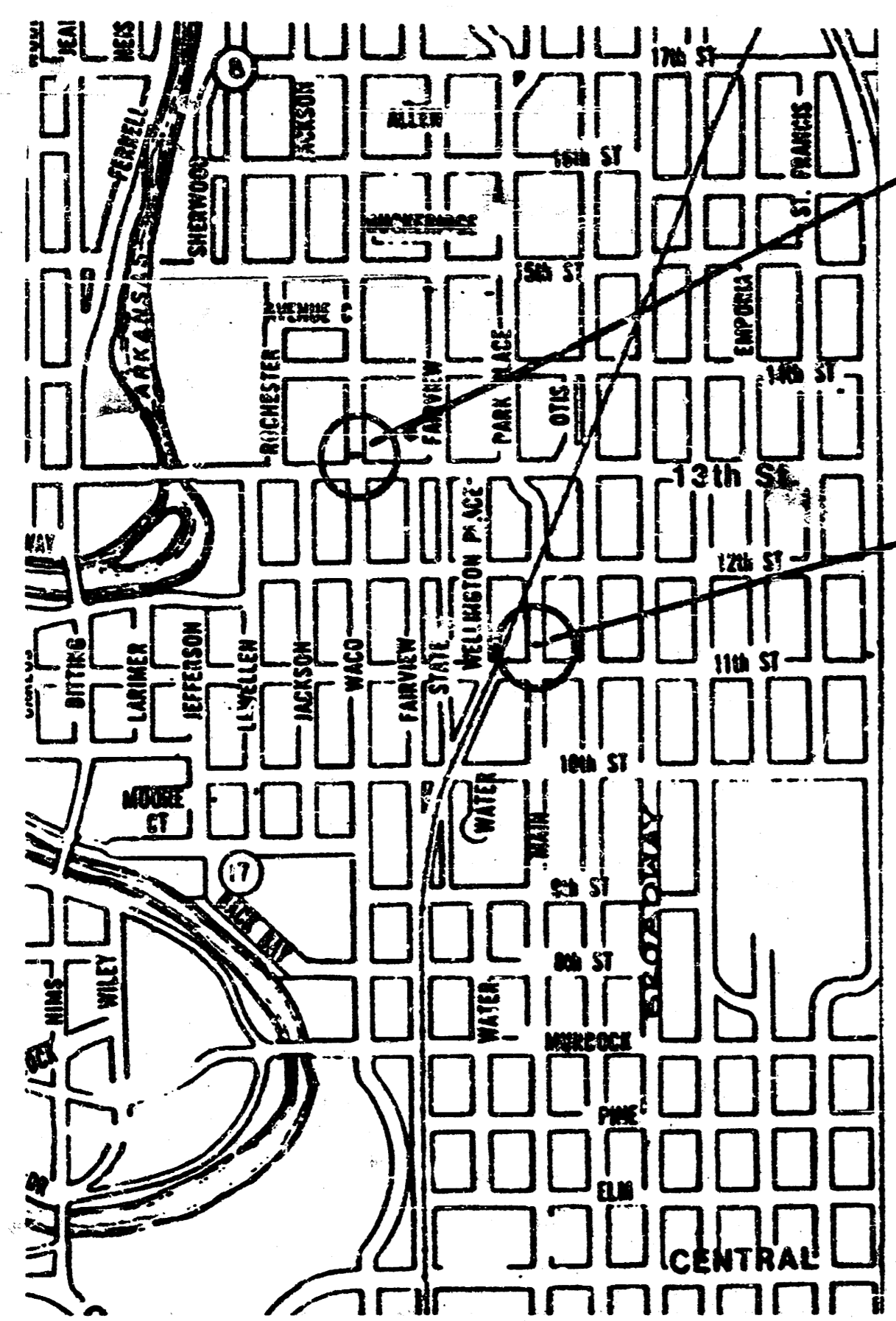
### ADD ALTERNATE

SIDEWALK CONSTRUCTION ON PAWNEE AVE. (NORTH SIDE) FROM GROVE TO HILLSIDE (4.00' WIDE)

NOTE: NO ADD ALTERNATE WORK IS TO BE CONSTRUCTED WITHOUT WRITTEN APPROVAL OF THE CITY ENGINEER.

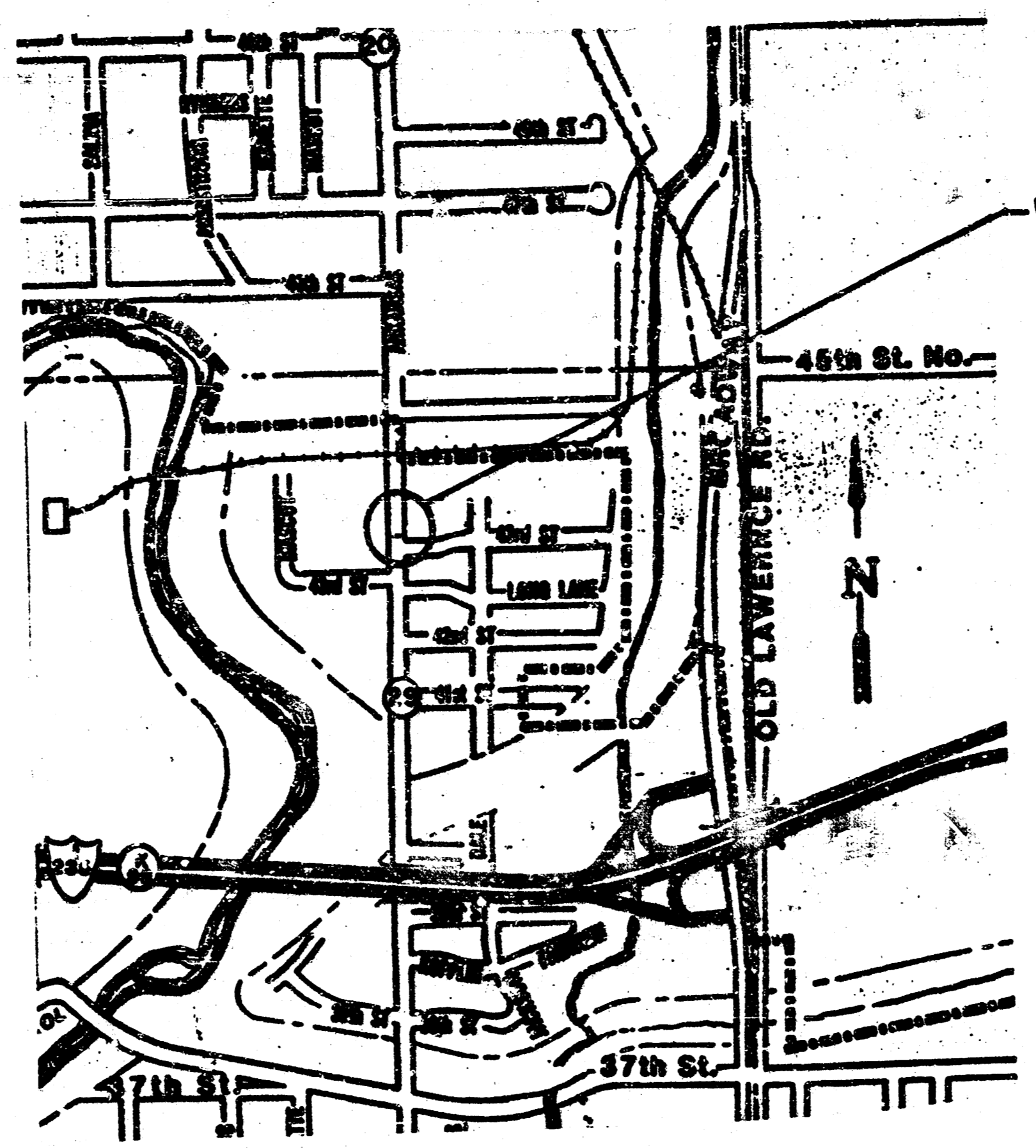
## INDEX OF SHEETS

| <u>SHEET NO.</u> | <u>DESCRIPTION</u>      |
|------------------|-------------------------|
| 1                | COVER SHEET             |
| 2                | AREA LOCATION MAP.      |
| 3                | WHEELCHAIR RAMP DETAILS |
| 4-10             | PLAN SHEETS             |

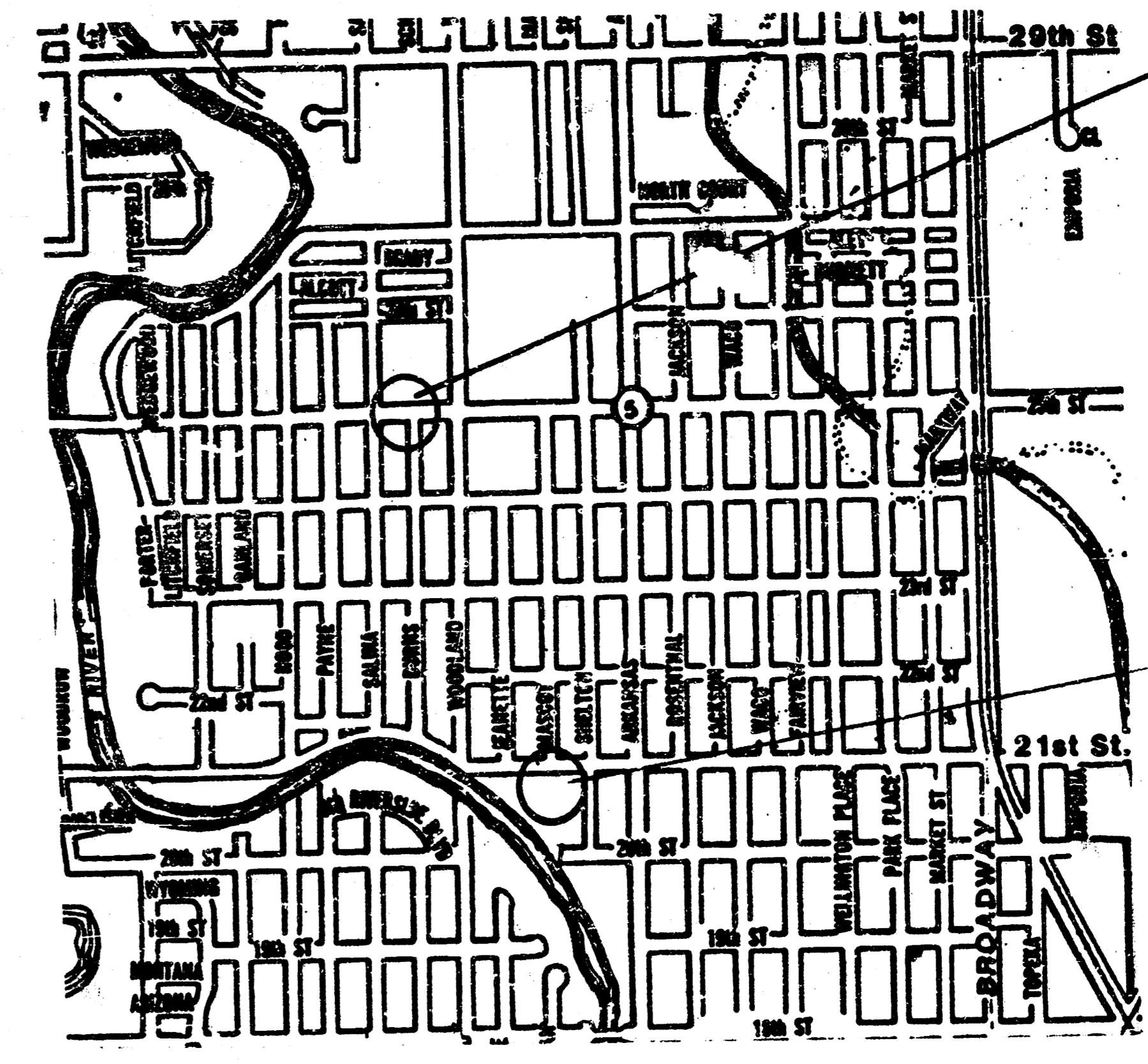


PROPOSED WHEELCHAIR RAMP CONSTRUCTION

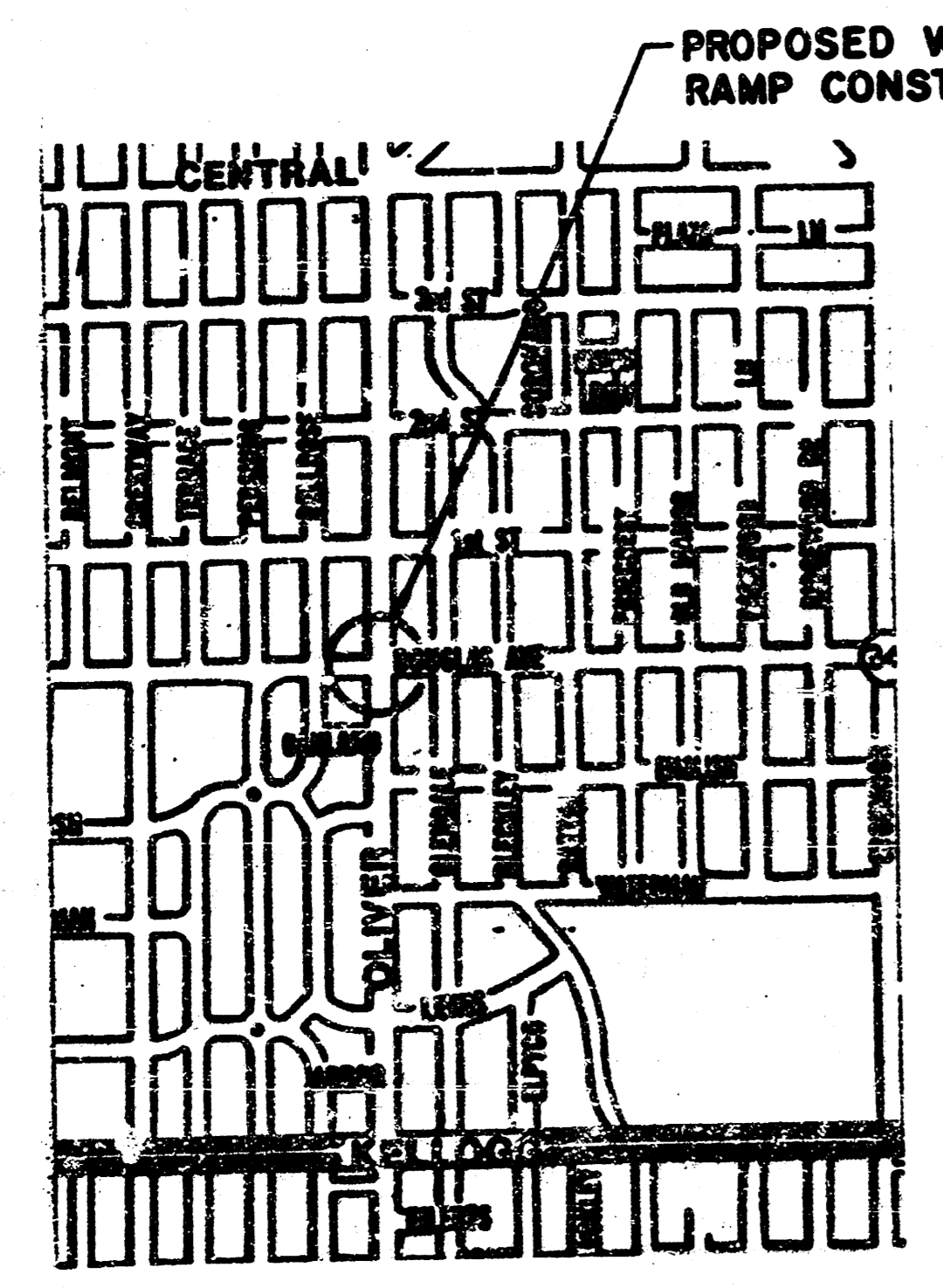
PROPOSED WHEELCHAIR RAMP CONSTRUCTION FOR SCHOOL CROSSWALK.



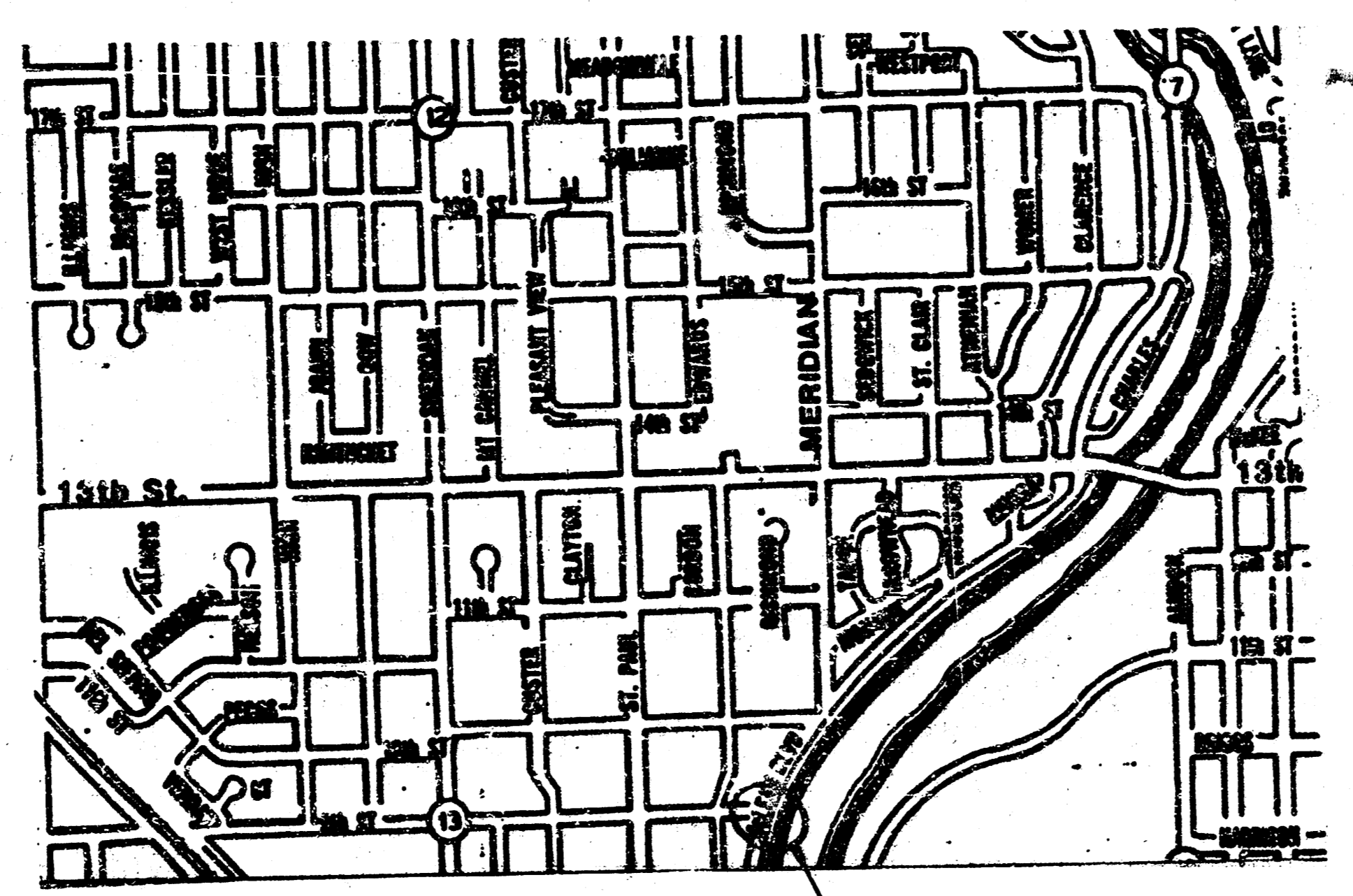
WHEELCHAIR & SIDEWALK RAMP CONSTRUCTION FOR SCHOOL CROSSWALK.



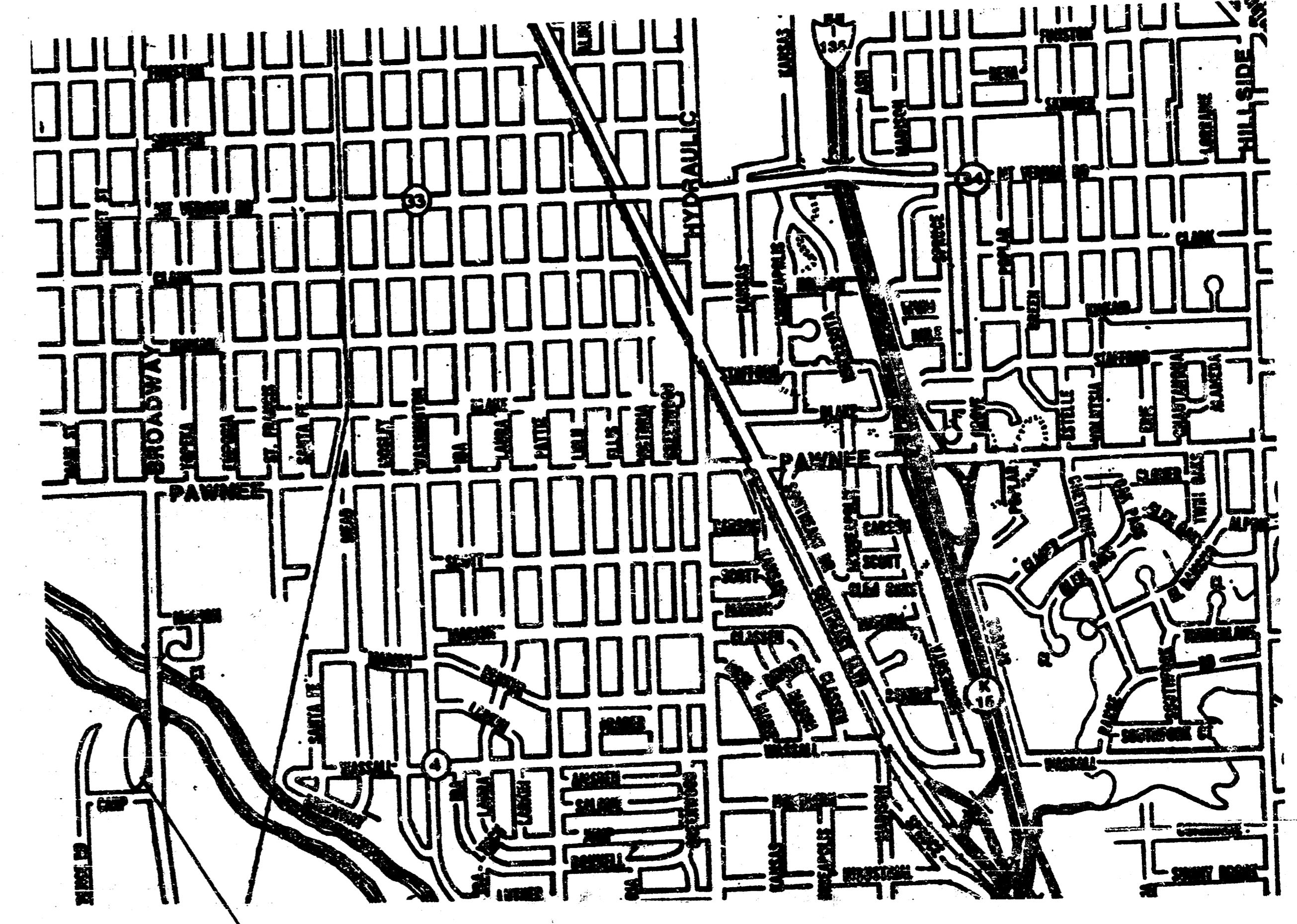
PROPOSED WHEELCHAIR RAMP CONSTRUCTION FOR SCHOOL CROSSWALK.



PROPOSED WHEELCHAIR RAMP CONSTRUCTION.



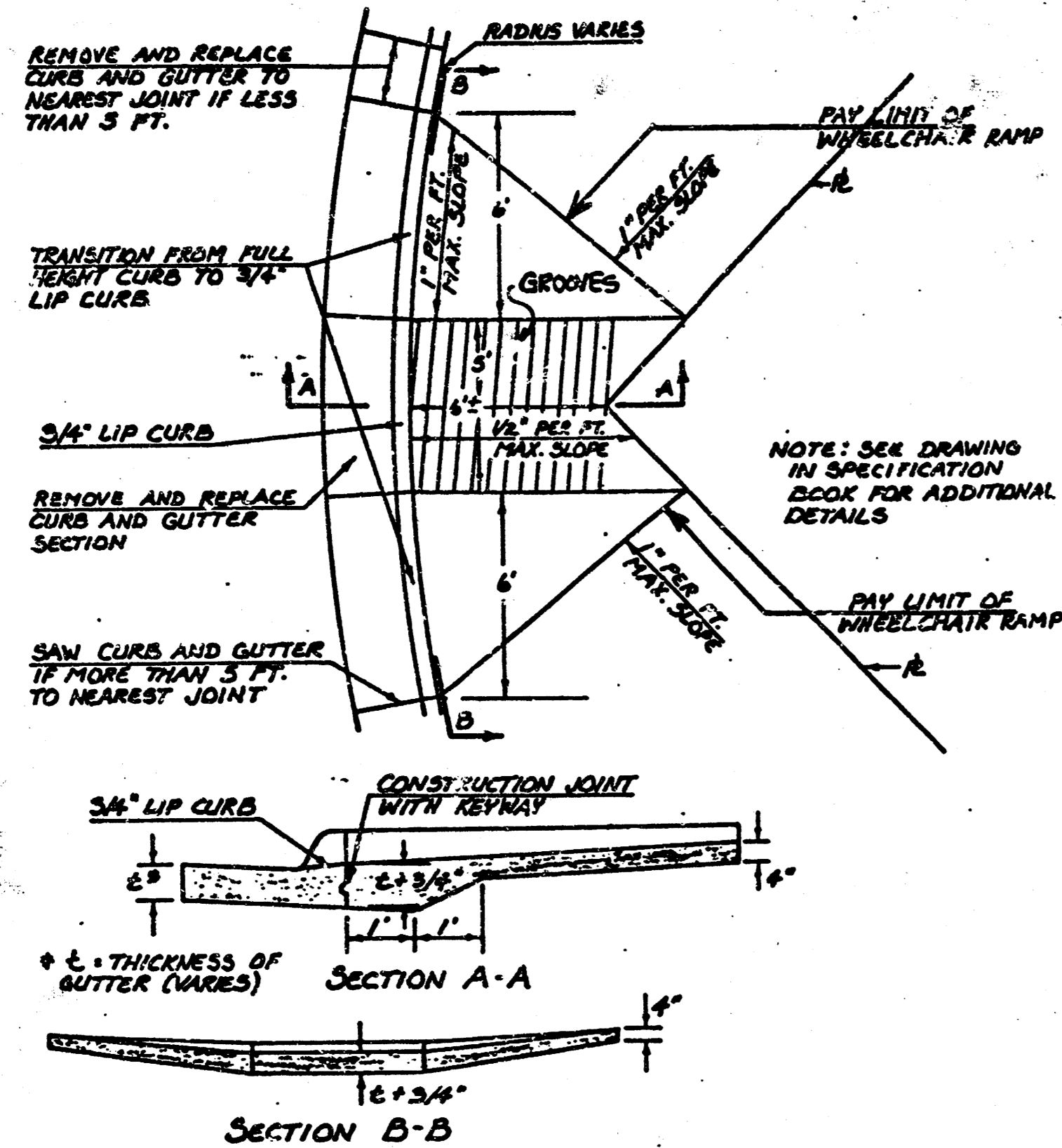
PROPOSED WHEELCHAIR RAMP CONSTRUCTION.



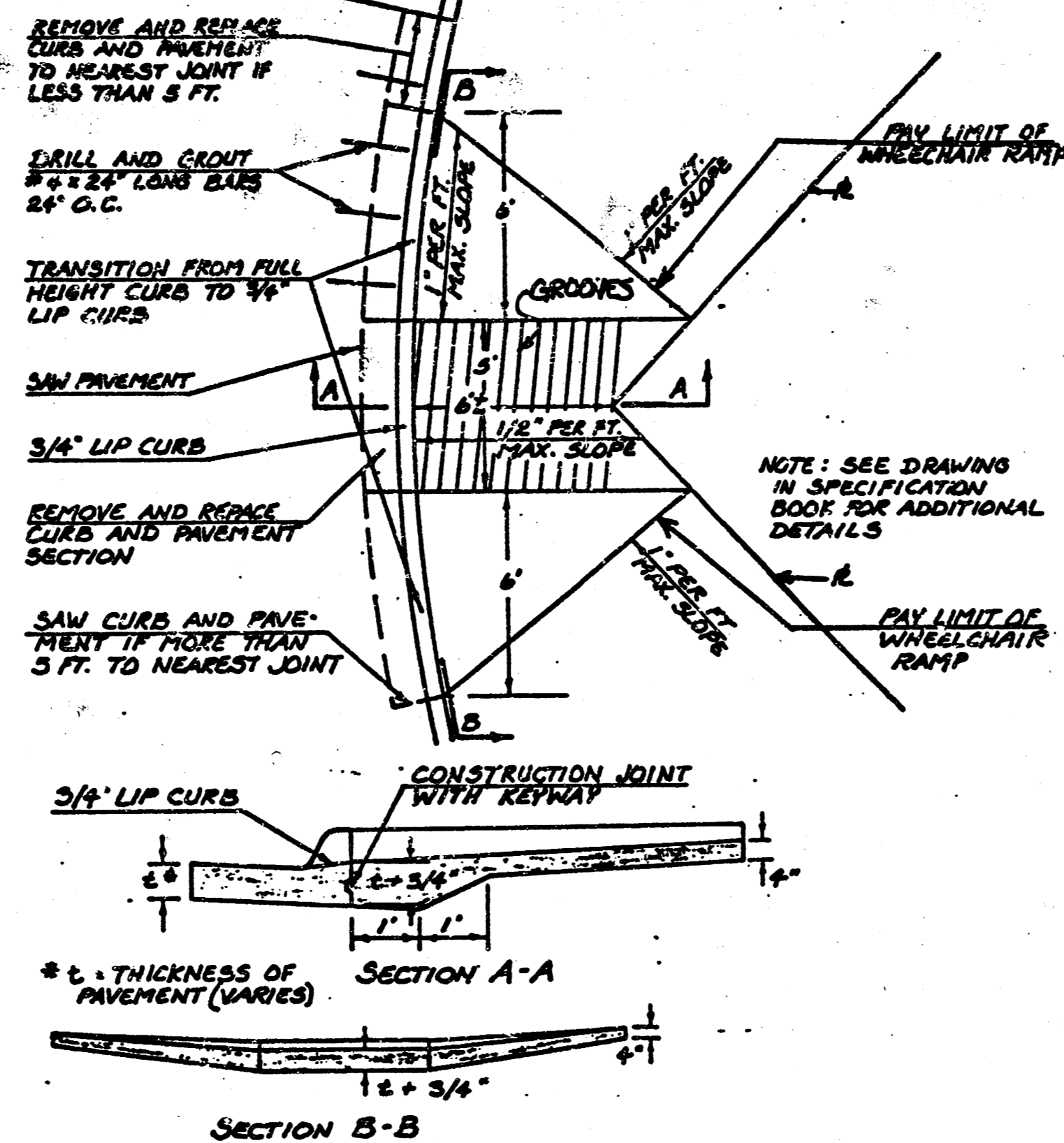
PROPOSED ASPHALT WALK CONSTRUCTION.

|                                |             |                  |                   |     |       |
|--------------------------------|-------------|------------------|-------------------|-----|-------|
| 1990                           |             |                  | ARTERIAL SIDEWALK |     |       |
| AREA                           |             | LOCATION         |                   | MAP |       |
| PROJECT NUMBER                 |             |                  |                   |     |       |
| 472-82042                      |             | INDEX No. 705202 |                   |     |       |
| BOOK NO.                       | APPROVED BY | DATE             |                   |     |       |
| DRAWN BY                       | REVIS       |                  |                   |     |       |
| CITY OF WICHITA                |             |                  |                   |     |       |
| DEPARTMENT OF ENGINEERING      |             |                  |                   |     |       |
| DIRECTOR OF ENG./CITY ENGINEER |             |                  |                   |     | SCALE |

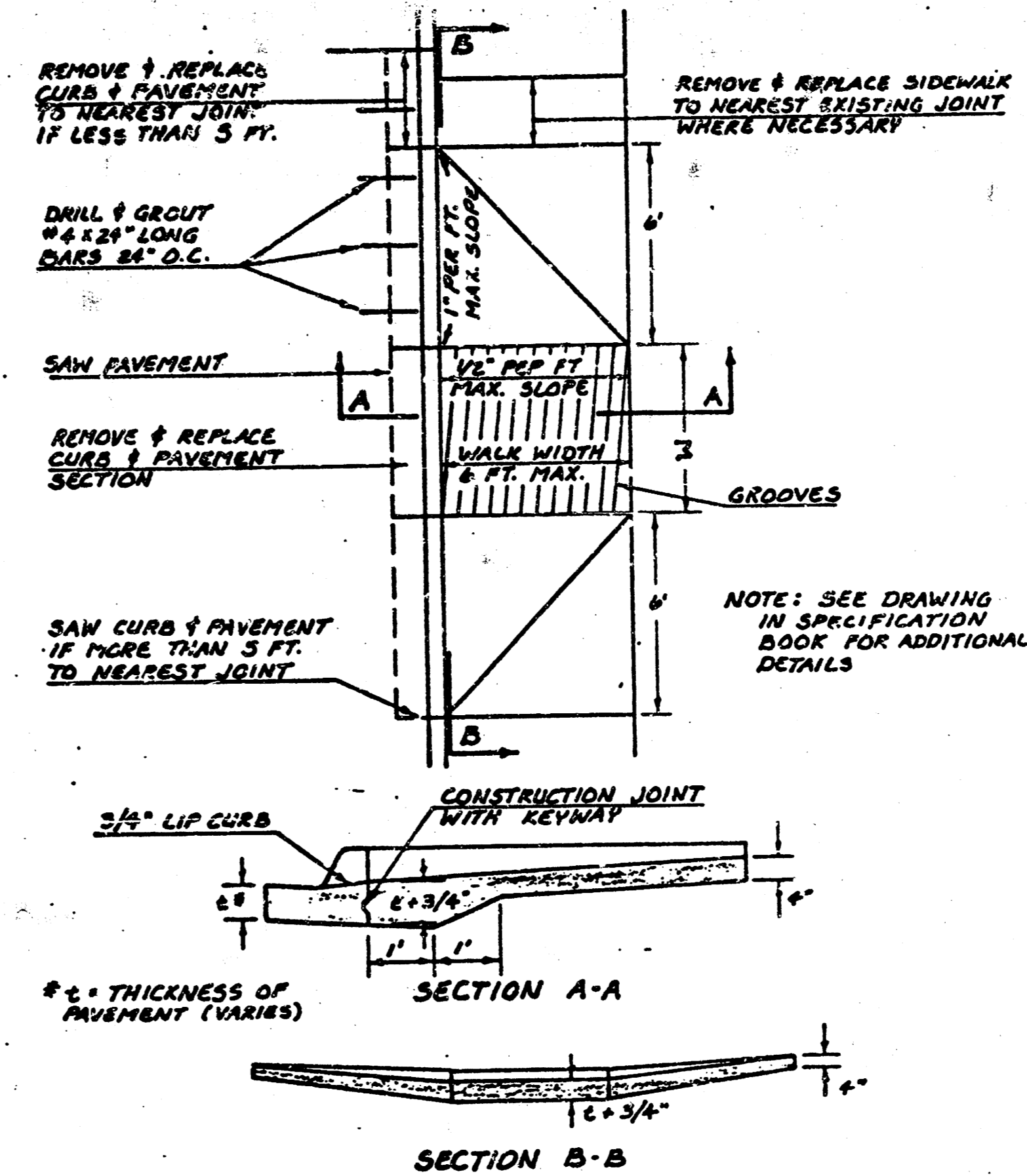
**STANDARD WHEELCHAIR RAMP CONSTRUCTION DETAIL FOR STREET WITH COMBINED CURB AND GUTTER ON RADIUS WITH 6" FROM BACK OF CURB TO PROPERTY CORNER**



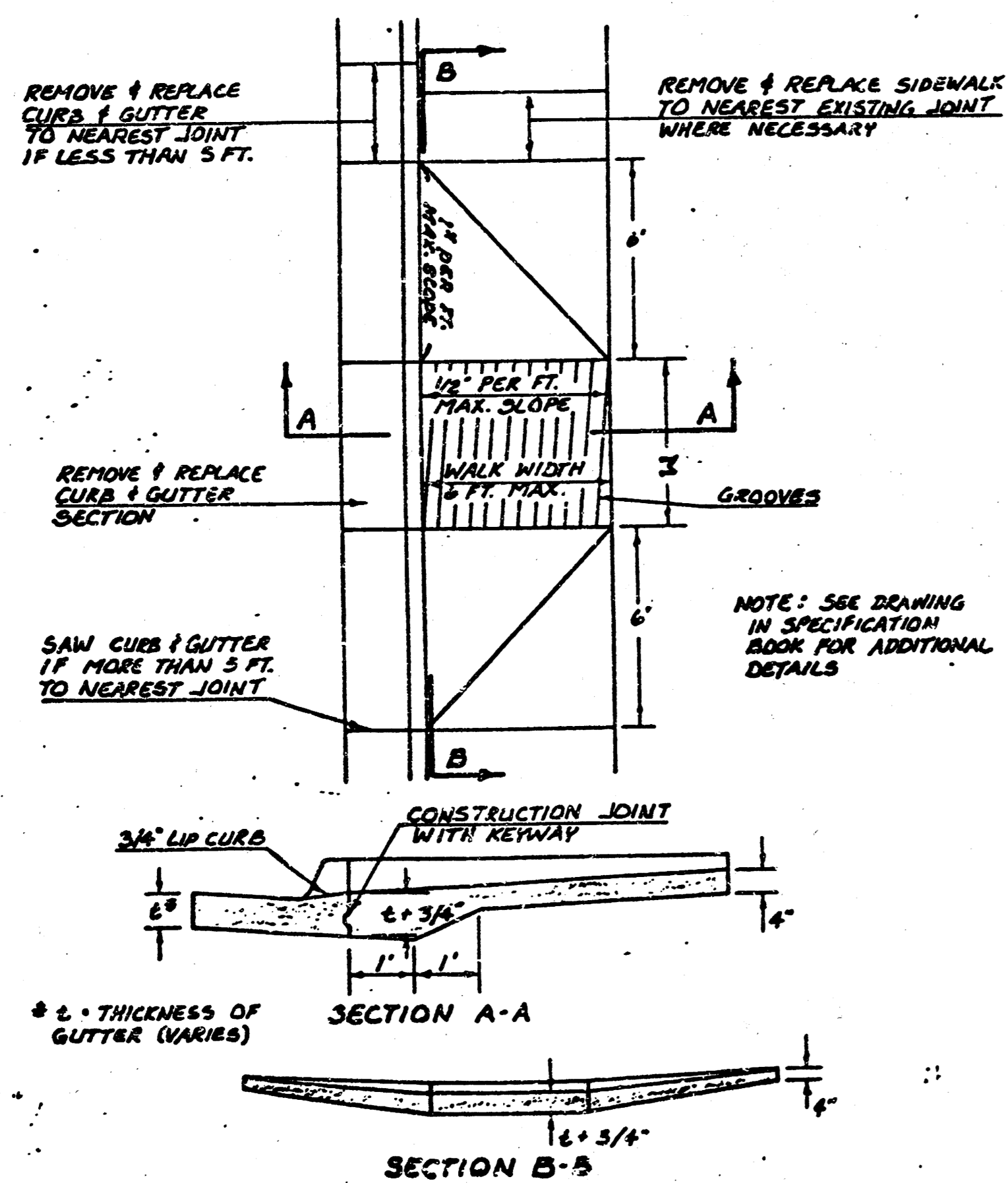
**STANDARD WHEELCHAIR RAMP CONSTRUCTION DETAIL FOR CONCRETE STREETS WITH MONOLITHIC CURB ON RADIUS WITH 6" FROM BACK OF CURB TO PROPERTY CORNER**



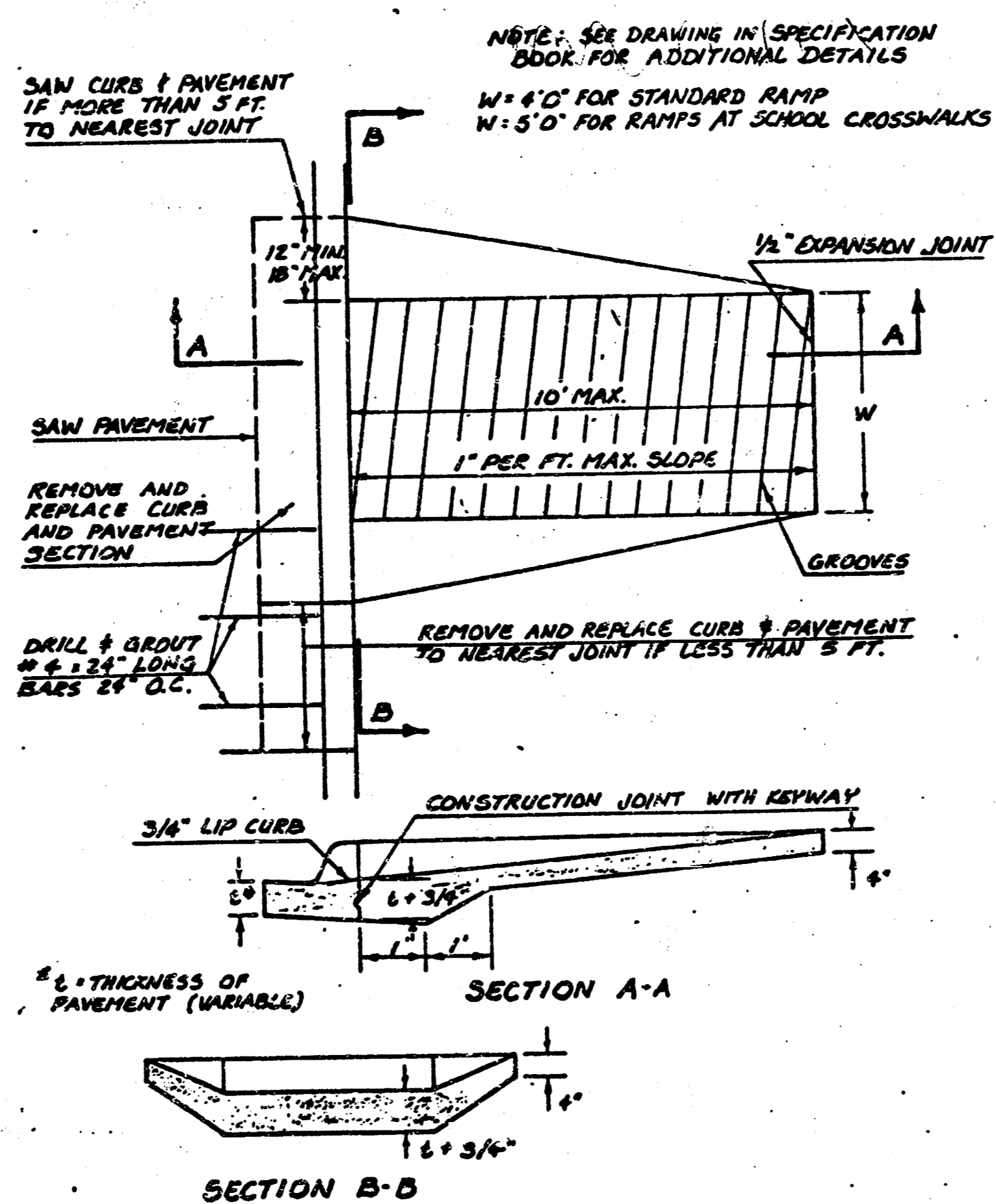
**STANDARD WHEELCHAIR RAMP CONSTRUCTION DETAIL FOR CONCRETE STREETS WITH MONOLITHIC CURB AND FULL WALK**



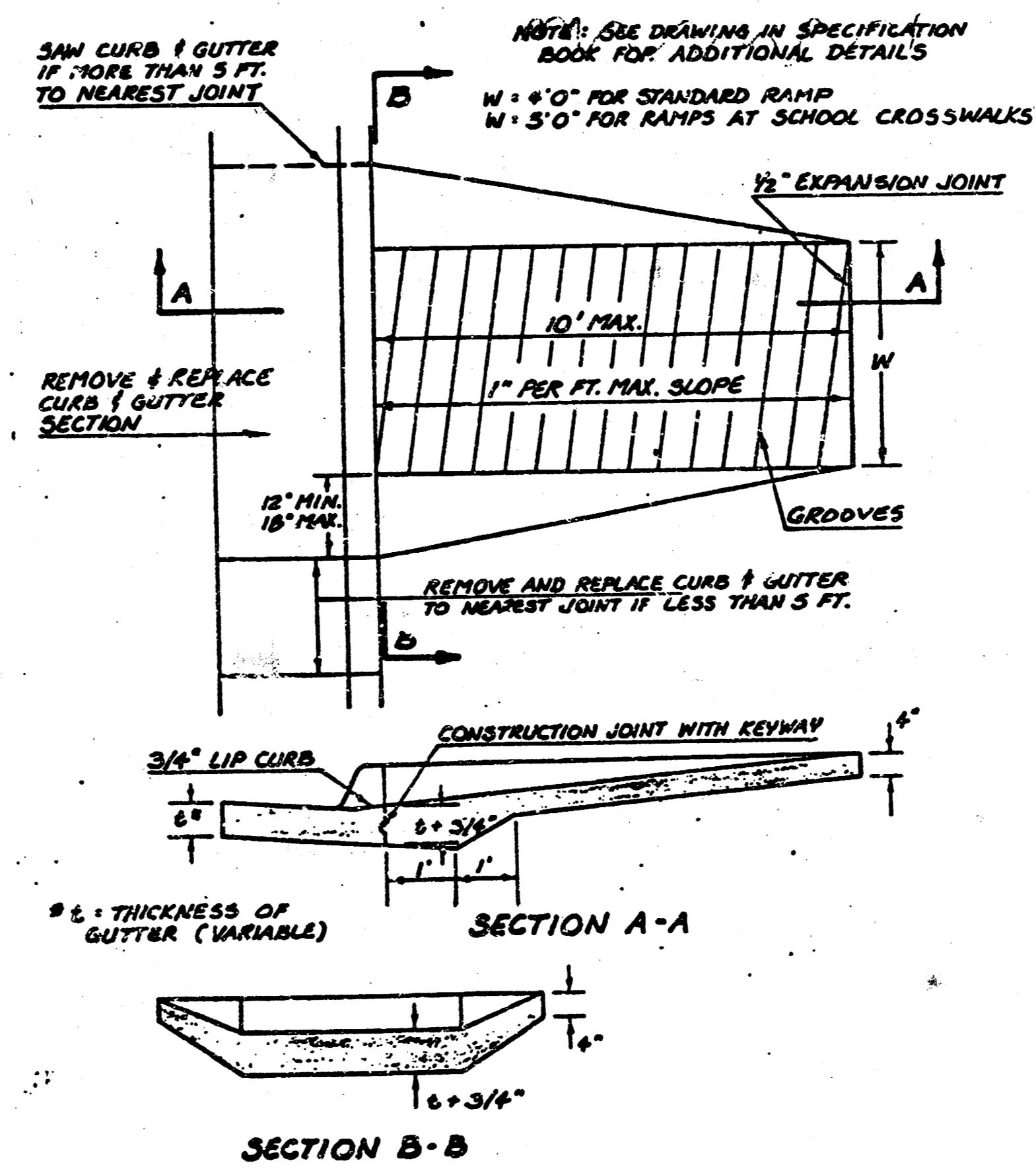
**STANDARD WHEELCHAIR RAMP CONSTRUCTION DETAIL FOR STREETS WITH COMBINED CURB & GUTTER AND FULL WALK**



**STANDARD WHEELCHAIR RAMP CONSTRUCTION DETAIL FOR CONCRETE STREETS WITH MONOLITHIC CURB**

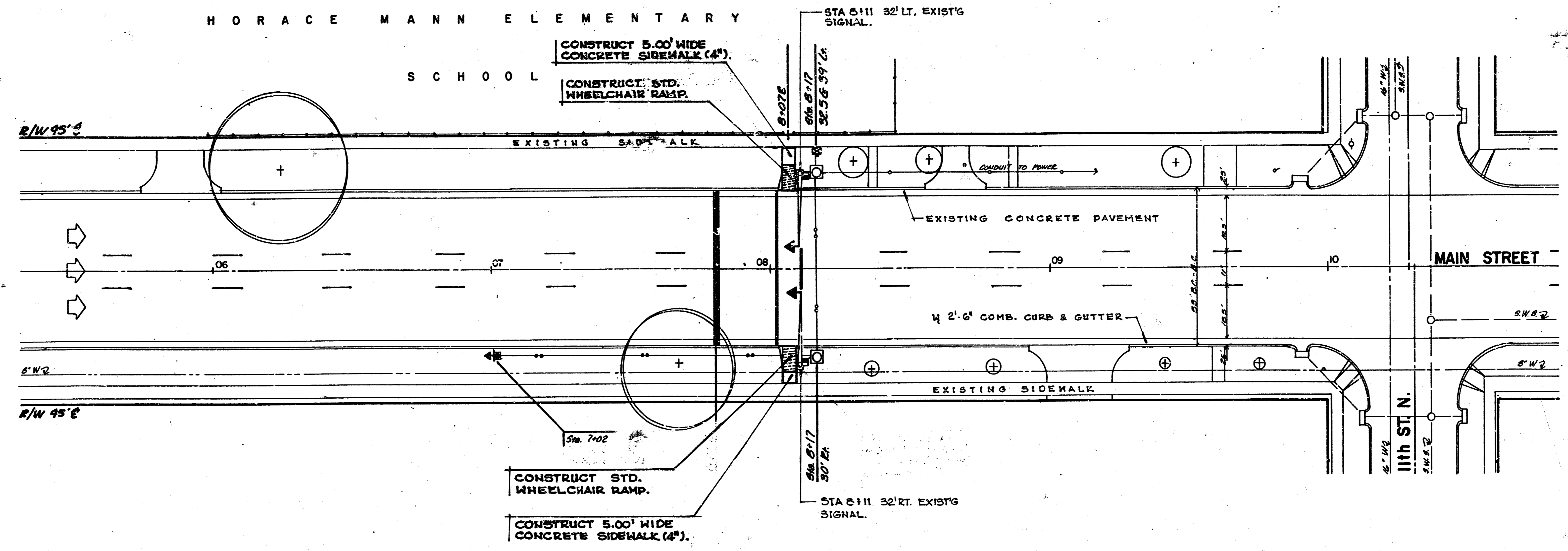


**STANDARD WHEELCHAIR RAMP CONSTRUCTION DETAIL FOR STREETS WITH COMBINED CURB & GUTTER**



NOTE: The cost of all work indicated on this sheet shall be included in the unit price bid for wheel chair ramp which price shall include all costs of removing and reconstructing existing pavement and monolithic curb, compaction of subgrade and necessary area grading.

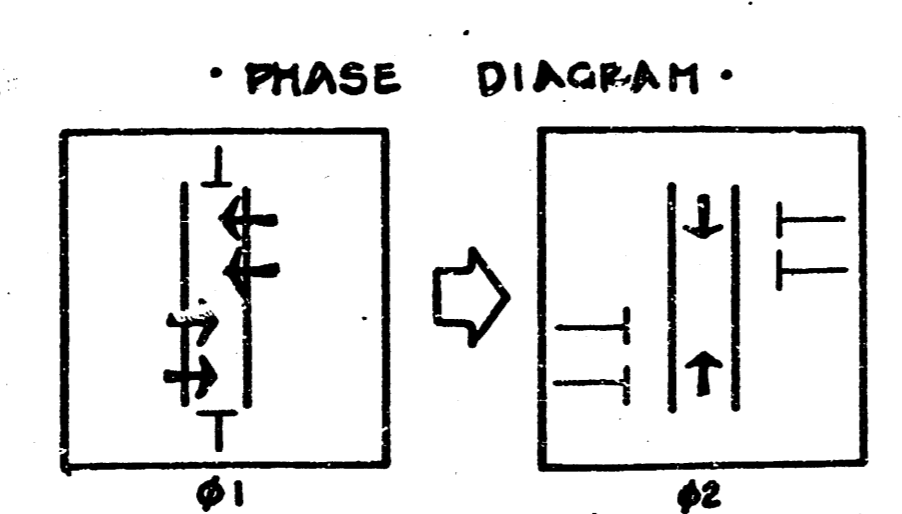
WHEELCHAIR RAMP DETAILS  
PROJECT NO. 472-82042  
INDEX NO. 705202



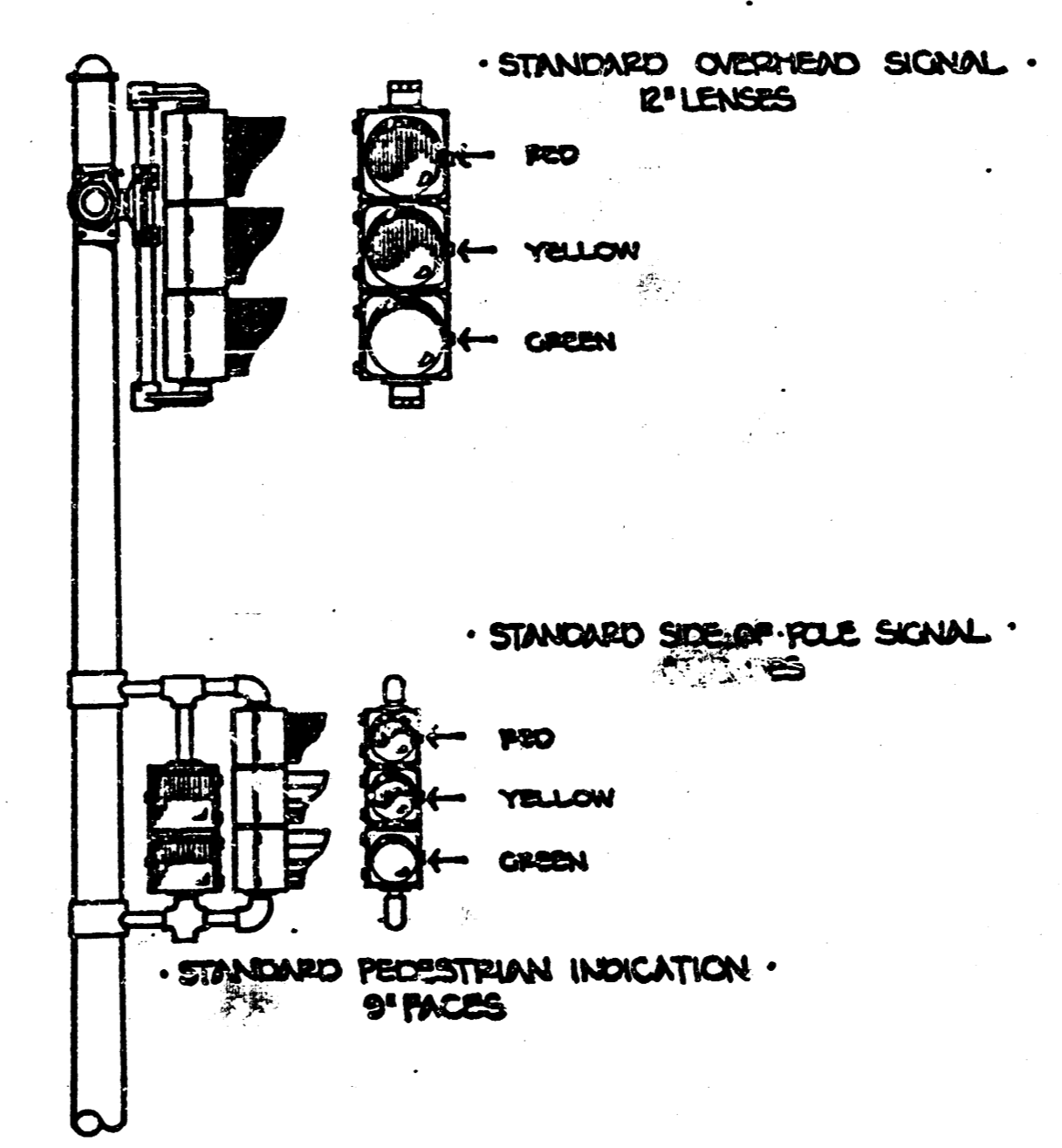
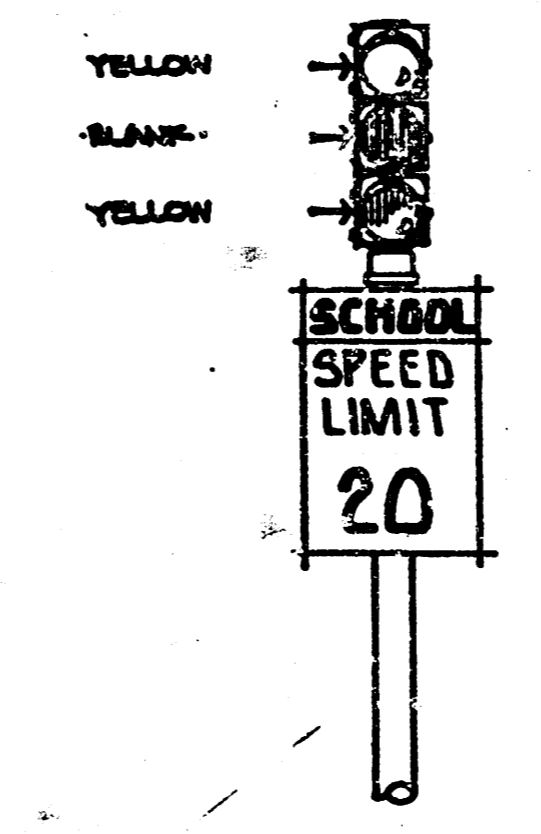
NOTE: INFORMATION SHOWN ON PLAN NOT DIRECTLY RELATED TO THE CONSTRUCTION OF SIDEWALK AND WHEELCHAIR RAMP. IS NOT A PART OF THIS CONTRACT AND SHALL BE CONSIDERED AS DELETED.

- GENERAL NOTES:**
- CONTACT THE TRAFFIC ENGINEERING SECTION PRIOR TO RELOCATION OF ANY SIGNAL POLE, CONTROLLER, PEDESTAL, SERVICE SKULOPS, AND/OR CONDUIT.
  - CONDUIT TO BE PUSHED OR JACKED UNDER EXISTING PAVEMENT INCLUDING SIDEWALK, DRIVE APPROACHES, ETC. UNLESS OTHERWISE NOTED.
  - TRAFFIC TO BE CARRIED THROUGH CONSTRUCTION.
  - STANDARD CONSTRUCTION SIGNING, AS OUTLINED IN THE SPECIFICATIONS MANUAL OF THE CITY OF WICHITA AND THE MANUAL ON UNIFORM TRAFFIC CONTROL DEVICES, SHALL BE INSTALLED AND MAINTAINED THROUGHOUT ALL PHASES OF CONSTRUCTION ON THIS PROJECT.
  - THE CONTRACTOR / OR FIELD ENGINEER SHALL CONTACT ALL UTILITY COMPANIES WHICH MIGHT BE AFFECTED BY THE INSTALLATION OF THE TRAFFIC SIGNALIZATION PRIOR TO ANY UNDERGROUND INSTALLATION, AND REQUEST THEIR ASSISTANCE IN LOCATING UNDERGROUND PLANTS.
  - THE CITY OF WICHITA SHALL REMOVE EXISTING TRAFFIC SIGNAL EQUIPMENT, (EXCEPT AS OTHERWISE NOTED).
  - SIGNAL INSTALLATION, WHEEL CHAIR RAMP, WALK SECTIONS, ETC. TO BE INSTALLED AS PER ENGINEERING SPECIFICATIONS.

NOTE: USE CAUTION WHEN TRENCHING - UNDERGROUND UTILITIES MAY BE PRESENT.



STANDARD VARIABLE MESSAGE SIGN - 8' LENSES



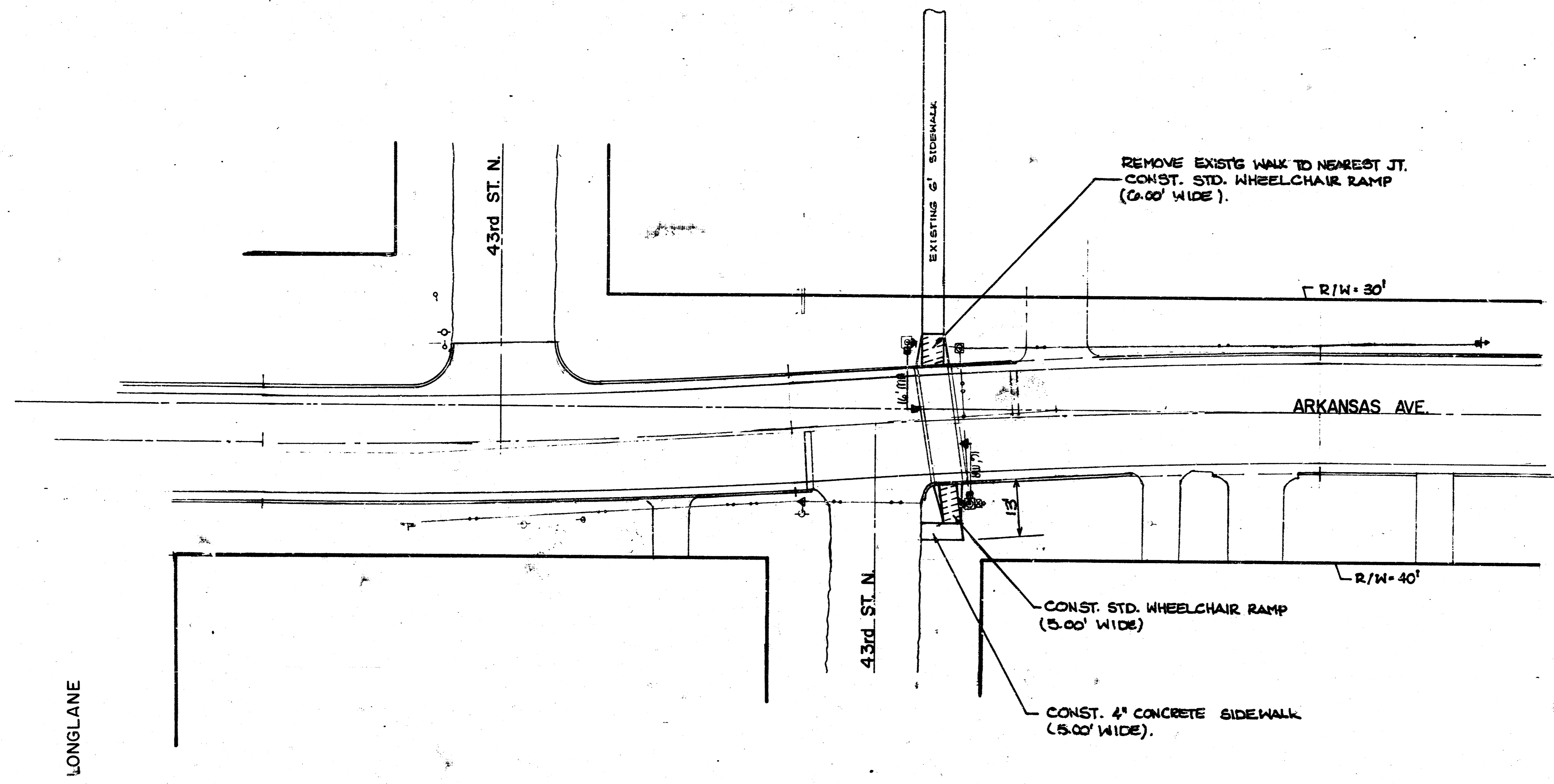
- LEGEND:**
- Signal Installation (Base, Pole, Mastarm)
  - Traffic Signal
  - Pedestrian Indication
  - V.M.S. Installation
  - Service Box
  - Controller - Pedestal Mount
  - 3/4" Conduit
  - 1" Conduit
  - 1.5" Conduit
  - 2.0" Conduit



|  |                  |                   |
|--|------------------|-------------------|
| PROJECT DESCRIPTION  |                  |                   |
| MAIN bet. ELEVENTH & TWELFTH STS.<br>SCHOOL X-WALK SIGNALIZATION<br>HORACE MANN ELEMENTARY |                  |                   |
| PROJECT NUMBER   |                  |                   |
| 472-82042  | INDEX No. 705202 |                   |
| BOOK NO.   | APPROVED BY      | DATE              |
| DRAWN BY JD  |                  | REVISED           |
| CITY OF WICHITA<br>DEPARTMENT OF PUBLIC WORKS  |                  |                   |
| TRAFFIC ENGINEER:<br>WM. G. MCKINLEY   |                  | SCALE<br>1" = 20' |

FILMED FROM THE BEST AVAILABLE COPY

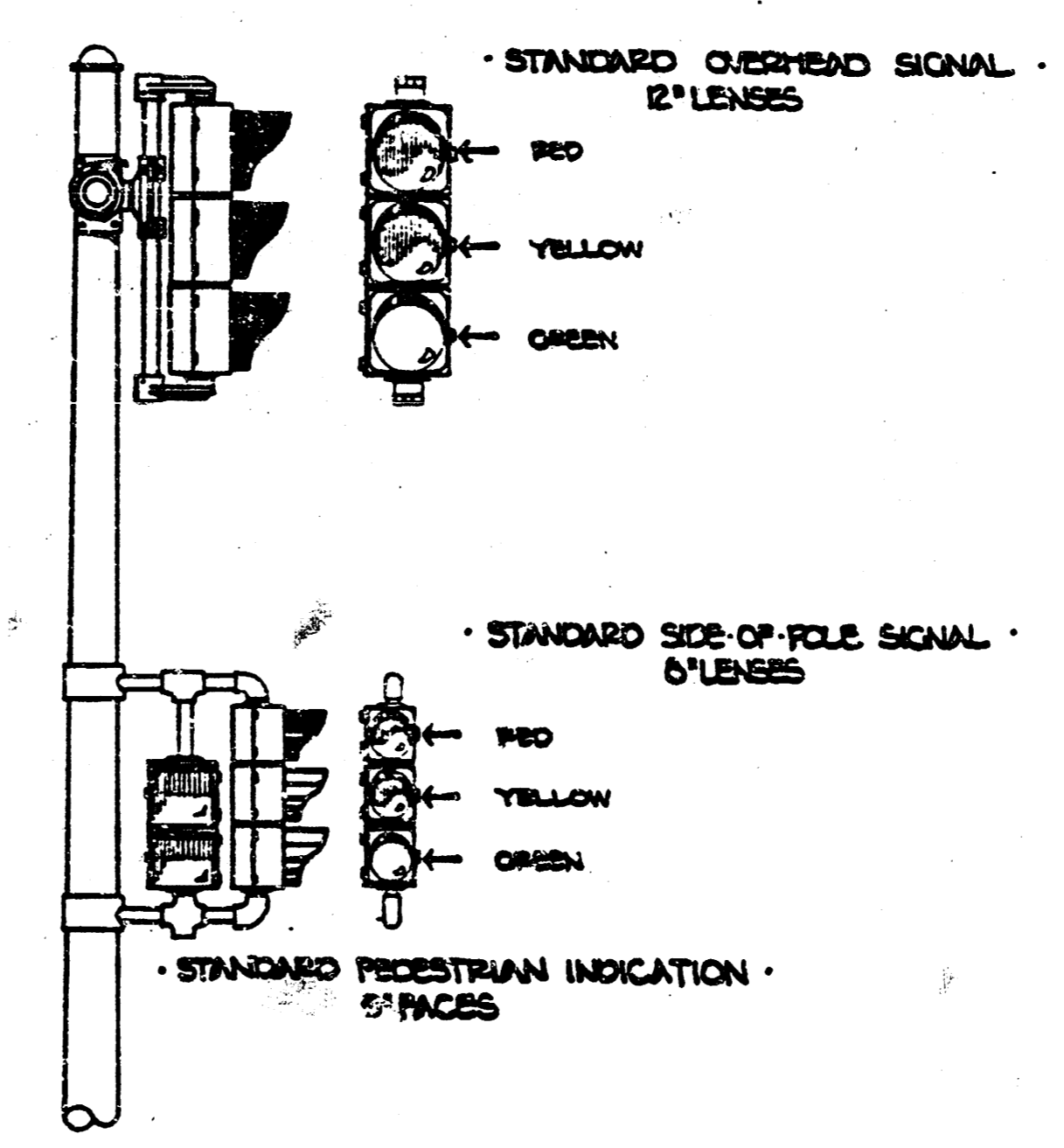
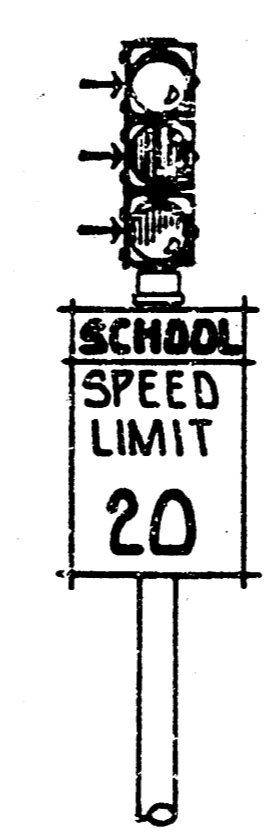
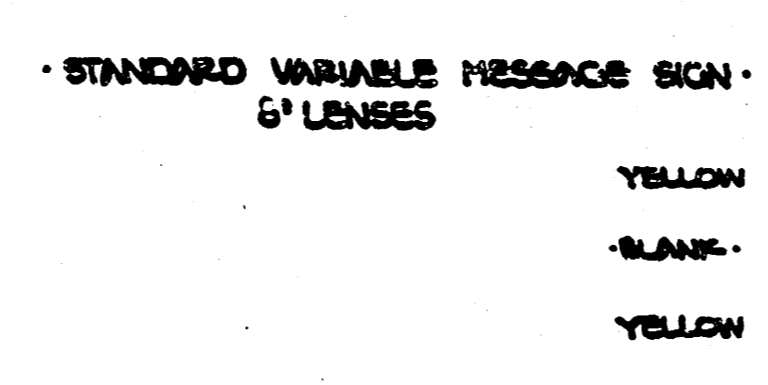
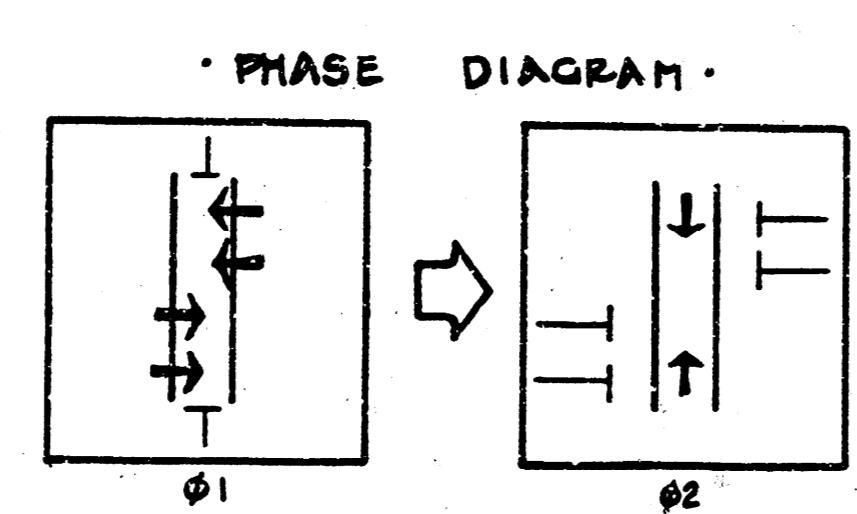
**EARHART ENVIRONMENTAL MAGNET SCHOOL**  
4401 ARKANSAS



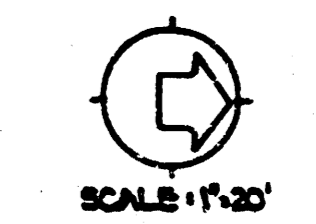
**GENERAL NOTES:**

1. CONTACT THE TRAFFIC ENGINEERING SECTION PRIOR TO RELOCATION OF ANY SIGNAL POLE, CONTROLLER, FEDERAL, SERVICE BOX/COILS, AND/OR CONDUIT.
2. CONDUIT TO BE PUSHED OR JACKED UNDER EXISTING PAVEMENT INCLUDING SIDEWALK, DRIVE APPROACHES, ETC. UNLESS OTHERWISE NOTED.
3. TRAFFIC TO BE CARRIED THROUGH CONSTRUCTION.
4. STANDARD CONSTRUCTION SIGNING, AS OUTLINED IN THE MANUAL ON UNIFORM TRAFFIC CONTROL DEVICES, SHALL BE INSTALLED AND MAINTAINED THROUGH-OUT ALL PHASES OF CONSTRUCTION ON THIS PROJECT.
5. THE CONTRACTOR/OR FIELD ENGINEER SHALL CONTACT ALL UTILITY COMPANIES WHICH MIGHT BE AFFECTED BY THE INSTALLATION OF THE TRAFFIC SIGNALIZATION PRIOR TO ANY UNDERGROUND INSTALLATION, AND REQUEST THEIR ASSISTANCE IN LOCATING UNDERGROUND PLANT.
6. THE CITY OF WICHITA SHALL REMOVE EXISTING TRAFFIC SIGNAL EQUIPMENT. (EXCEPT AS OTHERWISE NOTED)
7. SIGNAL INSTALLATION, WHEEL CHAIR RAMPS, WALK SECTIONS, ETC. TO BE INSTALLED AS PER ENGINEERING SPECIFICATIONS.

**NOTE: USE CAUTION WHEN TRENCHING - UNDERGROUND UTILITIES MAY BE PRESENT.**



- LEGEND:**
- ⊕ SIGNAL INSTALLATION (BASE, POLE, MASTARM)
  - ← TRAFFIC SIGNAL
  - ⊞ PEDESTRIAN INDICATION
  - ⊞ V.M.S. INSTALLATION
  - ⊞ SERVICE BOX
  - ⊞ CONTROLLER - PEDESTAL MOUNT
  - 3/4" CONDUIT
  - 1 1/4" CONDUIT
  - 2.0" CONDUIT

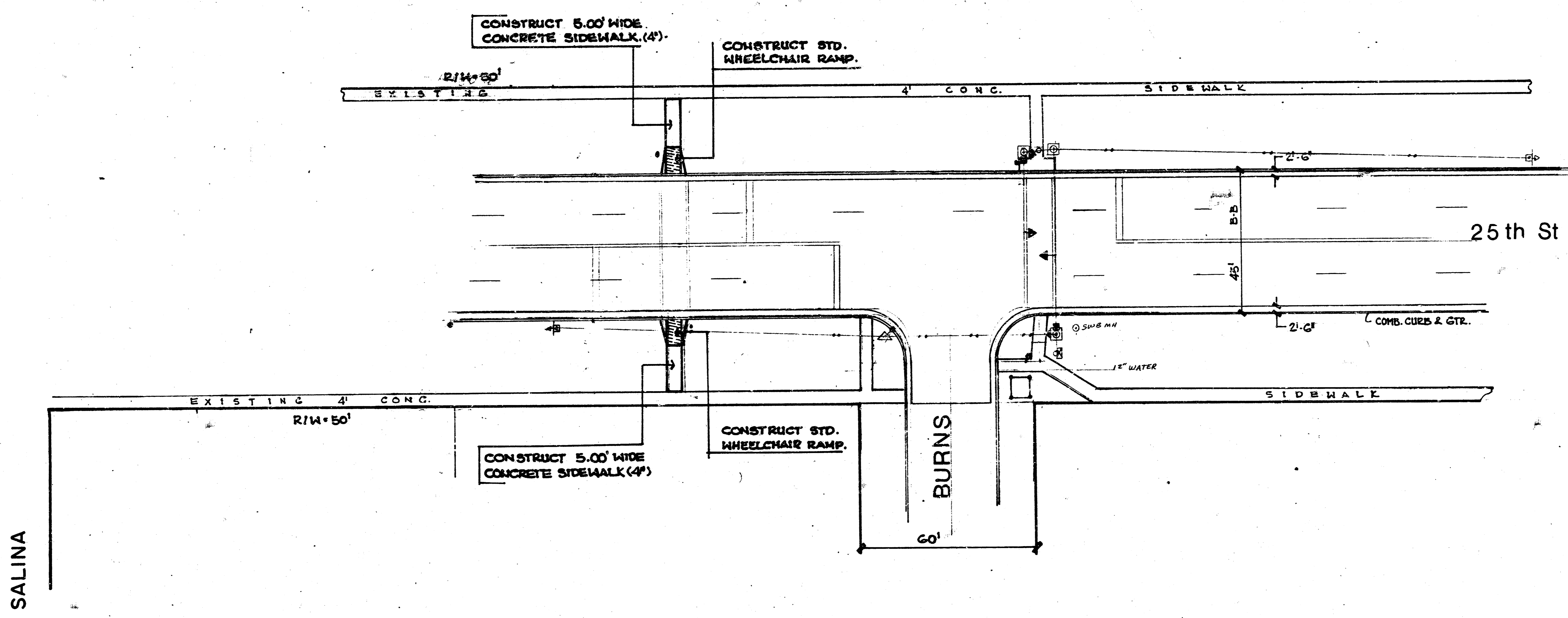


|   |             |              |
|---|-------------|--------------|
| PROJECT DESCRIPTION                                   |             |              |
| SCHOOL X-WALK SIGNALIZATION<br>• EARHART ELEMENTARY • |             |              |
| PROJECT NUMBER:                                       |             |              |
| 472-82042   | INDEX No.   | 705202       |
| BOOK NO.  | APPROVED BY | DATE AUG. 87 |
| DRAWN BY JD   |             | REVISED      |
| CITY OF WICHITA<br>DEPARTMENT OF PUBLIC WORKS         |             |              |
| TRAFFIC ENGINEER:                                     |             | SCALE        |
| WM. G. MCKINLEY                                       |             | 1" = 20'     |

**FILMED FROM THE BEST AVAILABLE COPY**

CLOUD ELEMENTARY SCHOOL

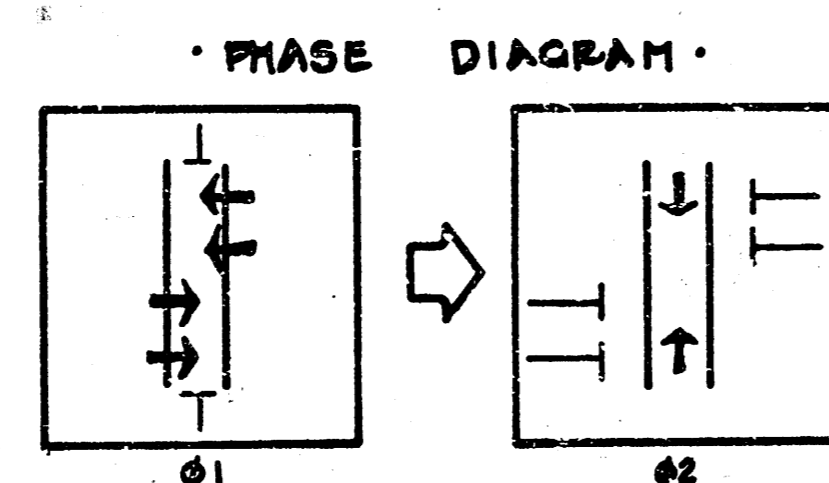
6/10



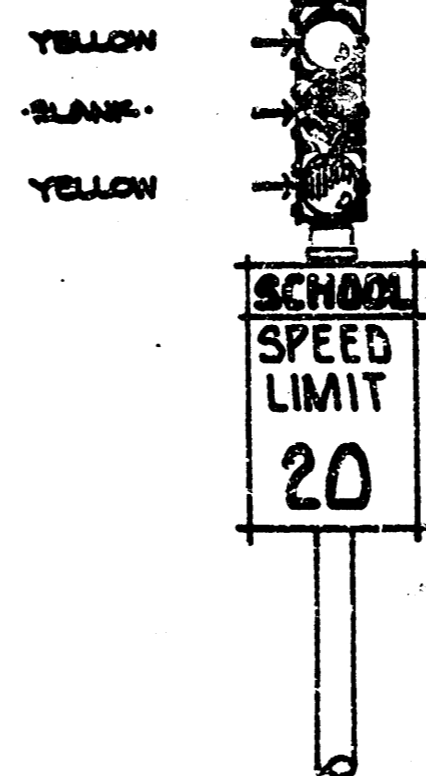
GENERAL NOTES:

1. CONTACT THE TRAFFIC ENGINEERING SECTION PRIOR TO RELOCATION OF ANY SIGNAL, POLE, CONTROLLER, PEDESTAL, SERVICE BOX/SCOPES, AND/OR CONDUIT.
2. CONDUIT TO BE PULLED OR JACKED UNDER EXISTING PAVEMENT INCLUDING SIDEWALK, DRIVE APPROACHES, ETC. UNLESS OTHERWISE NOTED.
3. TRAFFIC TO BE CARRIED THROUGH CONSTRUCTION.
4. STANDARD CONSTRUCTION SIGNING, AS OUTLINED IN THE SAFEGUARD MANUAL OF THE CITY OF WICHITA AND THE MANUAL ON UNIFORM TRAFFIC CONTROL DEVICES, SHALL BE INSTALLED AND MAINTAINED THROUGHOUT ALL PHASES OF CONSTRUCTION ON THIS PROJECT.
5. THE CONTRACTOR/OR FIELD ENGINEER SHALL CONTACT ALL UTILITY COMPANIES WHICH MIGHT BE AFFECTED BY THE INSTALLATION OF THE TRAFFIC SIGNALIZATION PRIOR TO ANY UNDERGROUND INSTALLATION, AND REQUEST THEIR ASSISTANCE IN LOCATING UNDERGROUND PLANT.
6. THE CITY OF WICHITA SHALL REMOVE EXISTING TRAFFIC SIGNAL EQUIPMENT. (EXCEPT AS OTHERWISE NOTED)
7. SIGNAL INSTALLATION, WHEEL CHAIR RAMPS, WALK SECTIONS, ETC. TO BE INSTALLED AS PER ENGINEERING SPECIFICATIONS.

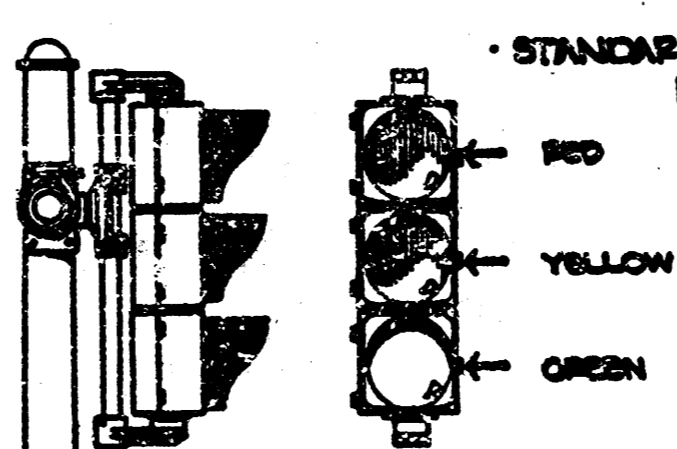
NOTE: USE CAUTION WHEN TRENCHING - UNDERGROUND UTILITIES MAY BE PRESENT.



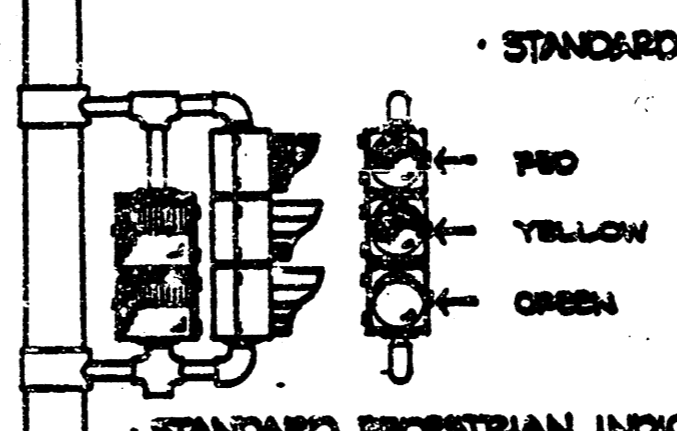
STANDARD VARIABLE MESSAGE SIGN - 8" LENSES



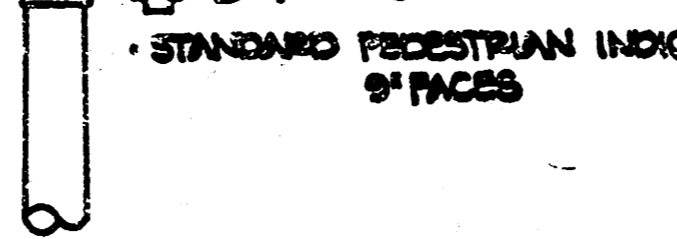
STANDARD OVERHEAD SIGNAL - 2" LENSES



STANDARD SIDE-OF-POLE SIGNAL - 8" LENSES



STANDARD PEDESTRIAN INDICATION - 8" FACES



LEGEND:

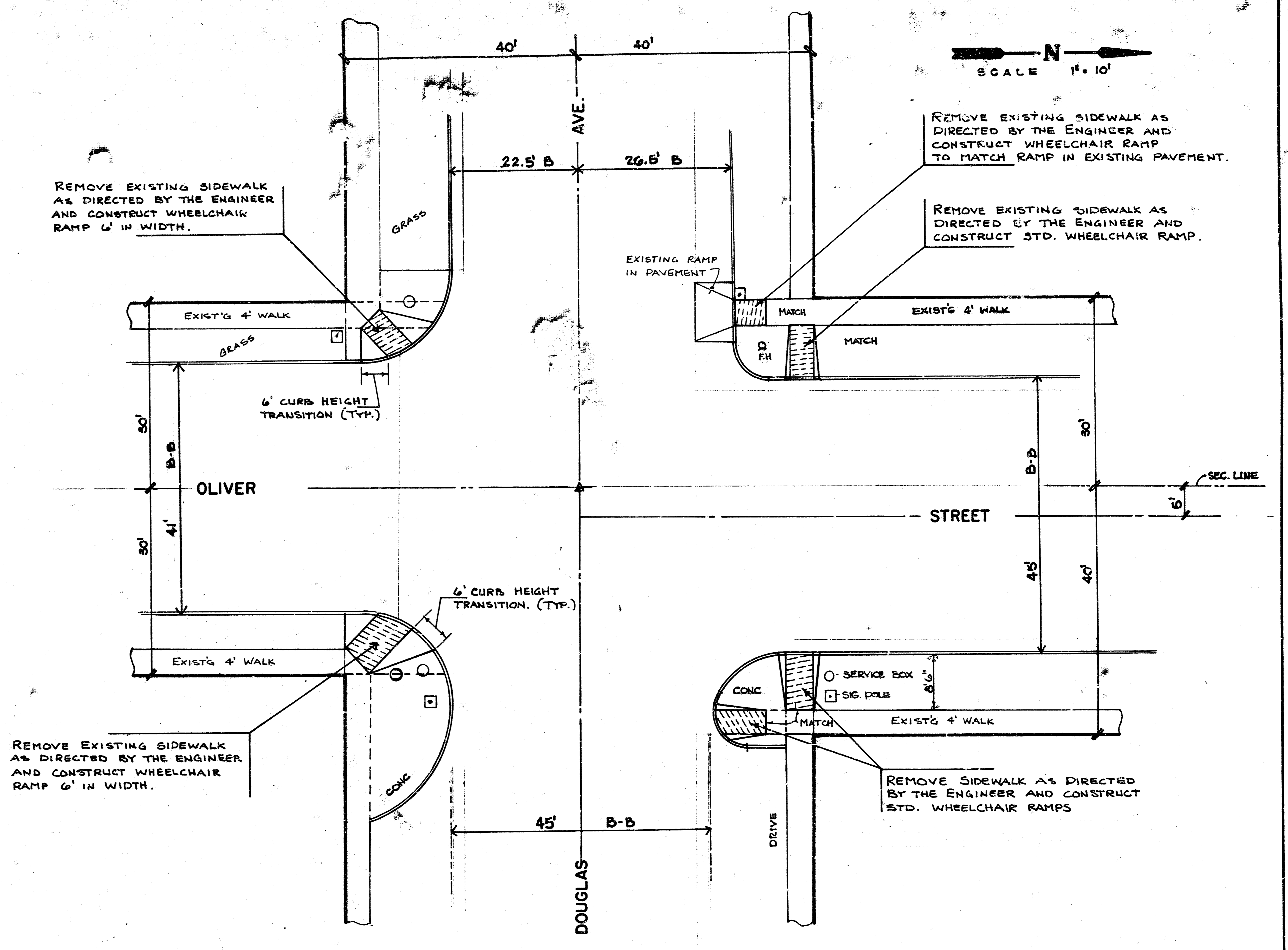
- ⊠ SIGNAL INSTALLATION (BASE, POLE, PEDESTAL)
- ⊞ TRAFFIC SIGNAL
- ⊞ PEDESTRIAN INDICATION
- ⊞ V.M.S. INSTALLATION
- ⊞ SERVICE BOX
- ⊞ CONTROLLER - PEDESTAL MOUNT
- 3/4" CONDUIT
- 1 1/4" CONDUIT
- 1.0" CONDUIT
- 2.0" CONDUIT



|   |             |         |
|---|-------------|---------|
| PROJECT DESCRIPTION                           |             |         |
| 1990 ARTERIAL SIDEWALK                        |             |         |
| PROJECT NUMBER                                |             |         |
| 472-82042 INDEX No. 705202                    |             |         |
| BOOK NO.                                      | APPROVED BY | DATE    |
| DRAWN BY                                      |             | REVISED |
| CITY OF WICHITA<br>DEPARTMENT OF PUBLIC WORKS |             |         |
| TRAFFIC ENGINEER                              |             | SCALE   |
| WM. G. MCKINLEY                               |             |         |

FILMED FROM THE BEST AVAILABLE COPY

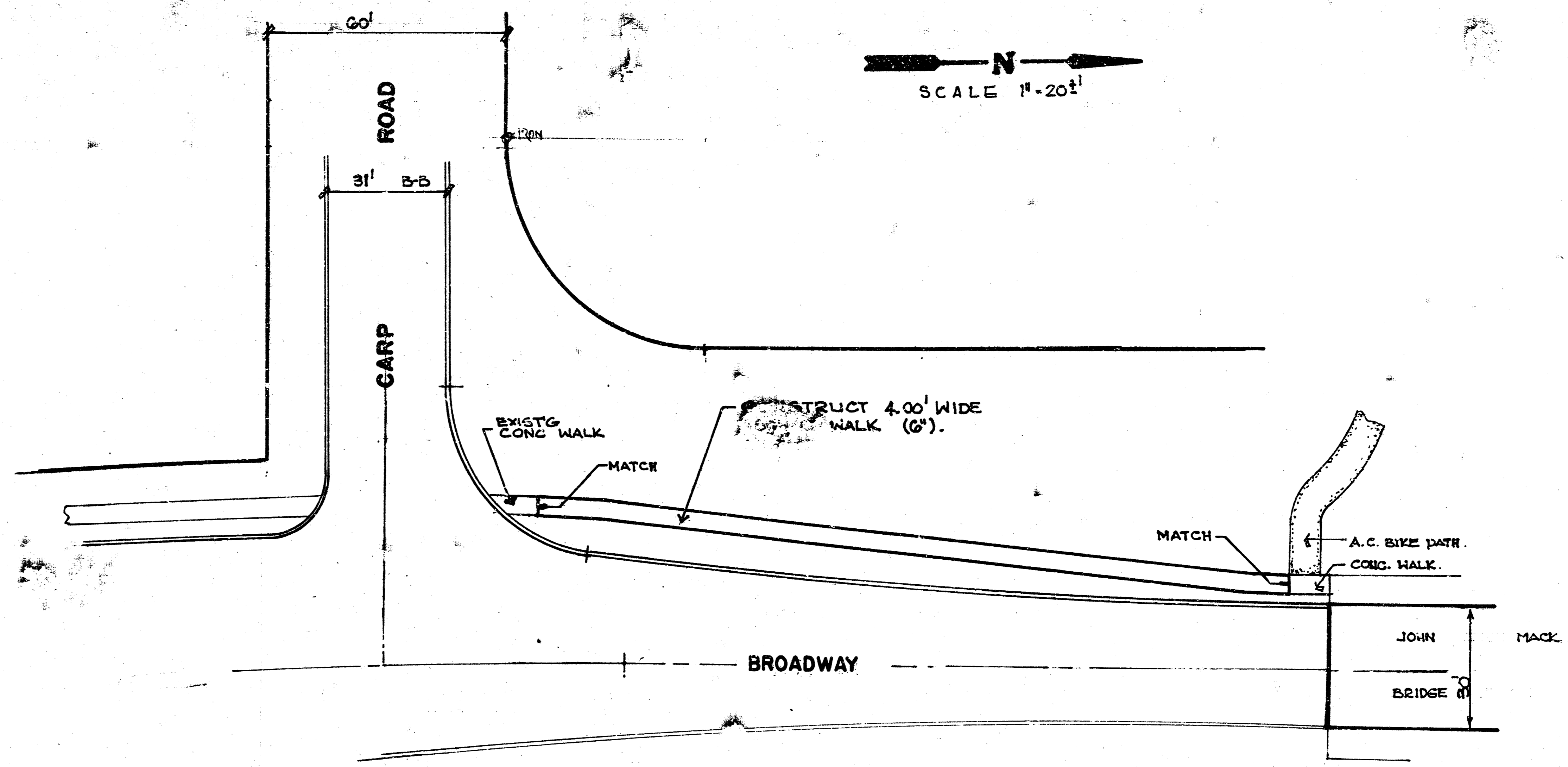




|                           |                  |         |
|---------------------------|------------------|---------|
| PROJECT DESCRIPTION       |                  |         |
| 1990 ARTERIAL SIDEWALK    |                  |         |
| PROJECT NUMBER            |                  |         |
| 472-82042                 | INDEX No. 705202 |         |
| BOOK NO.                  | APPROVED BY      | DATE    |
| DRAWN BY                  |                  | REVISED |
| CITY OF WICHITA           |                  |         |
| DEPARTMENT OF ENGINEERING |                  |         |
|                           |                  | SCALE   |

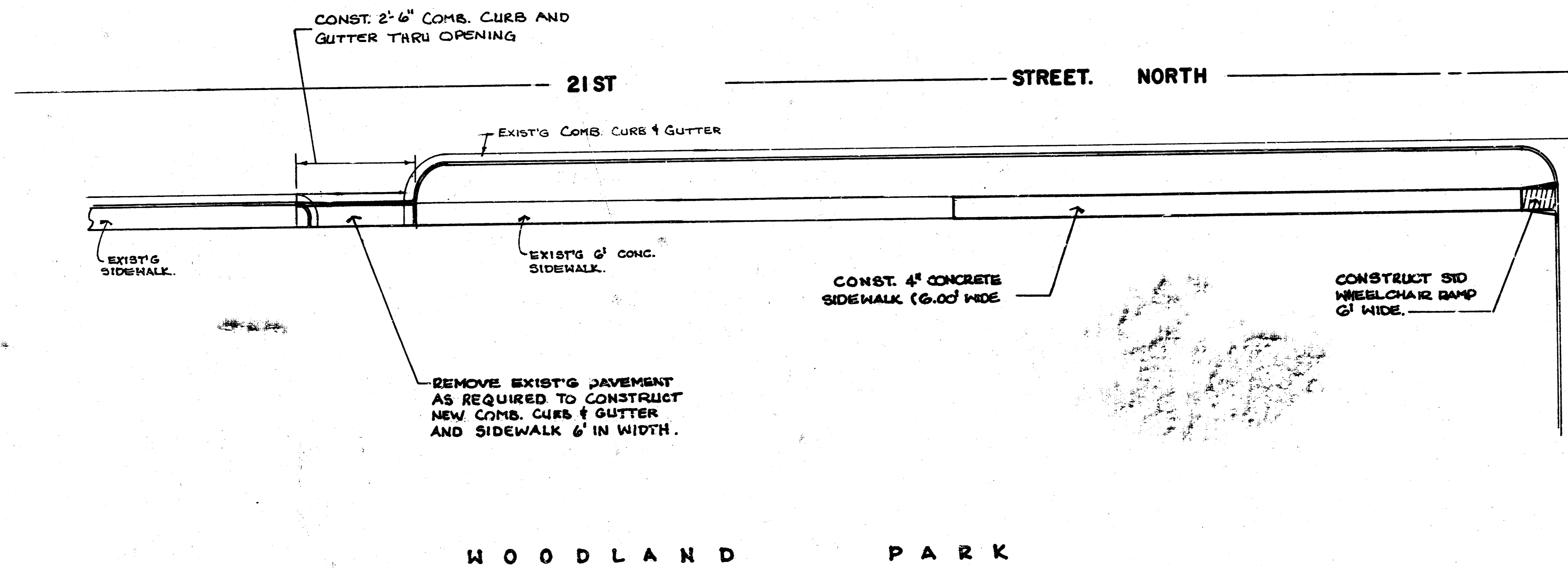
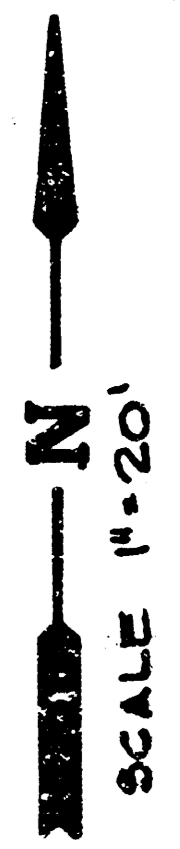
FILMED FROM THE BEST AVAILABLE COPY

9 10



|                            |
|----------------------------|
| PROJECT DESCRIPTION        |
| 1990 ARTERIAL SIDEWALK     |
| PROJECT NUMBER             |
| 472-32042 Index No. 705202 |

FILMED FROM THE BEST AVAILABLE COPY



|                               |             |
|-------------------------------|-------------|
| PROJECT DESCRIPTION           |             |
| 1990 ARTERIAL SIDEWALK        |             |
| PROJECT NUMBER                |             |
| 472-82042 Index No 705202     |             |
| BOOK NO.                      | APPROVED BY |
| DRAWN BY                      | DATE        |
|                               | REVISED     |
| CITY OF WICHITA               |             |
| DEPARTMENT OF ENGINEERING     |             |
| DIRECTOR OF ENL/CITY ENGINEER | SCALE       |

FILMED FROM THE BEST AVAILABLE COPY