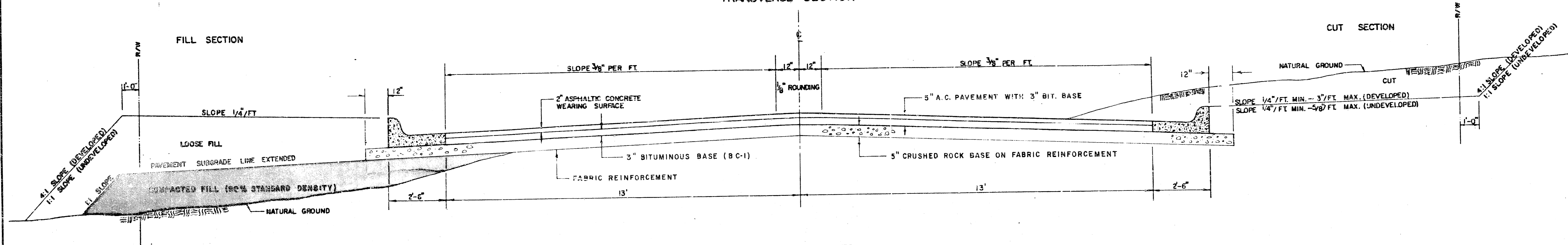
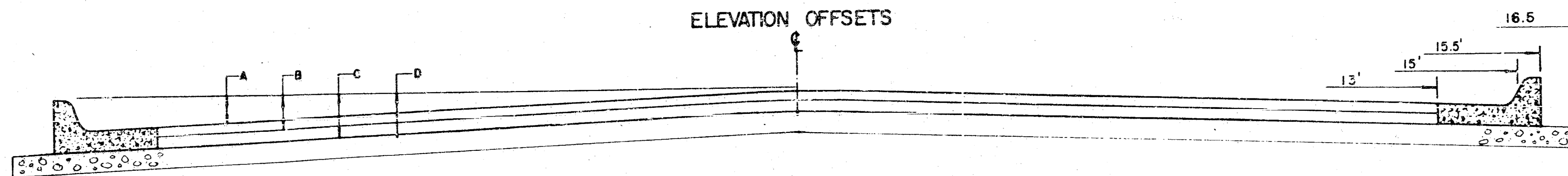


TYPICAL 31' PAVEMENT DETAILS

TRANSVERSE SECTION

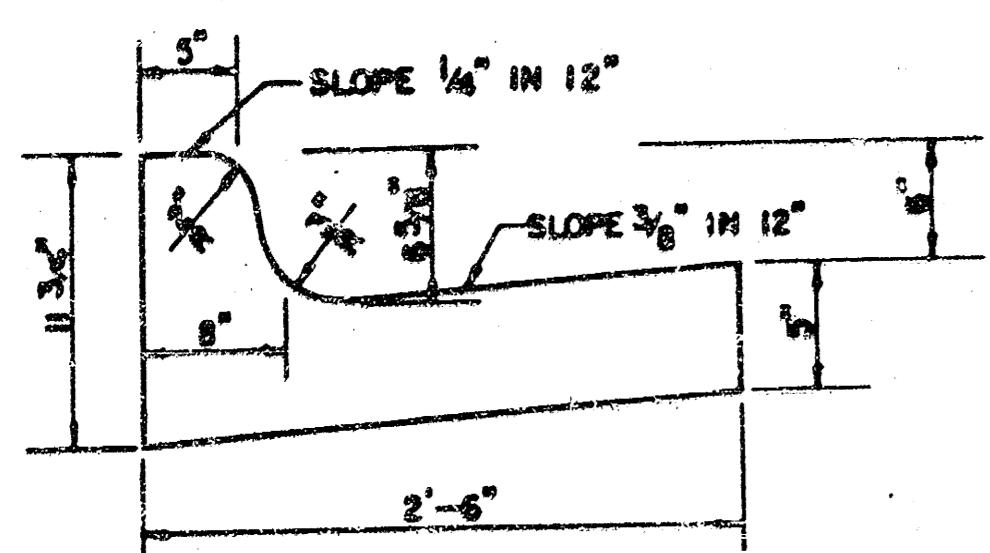


ELEVATION OFFSETS

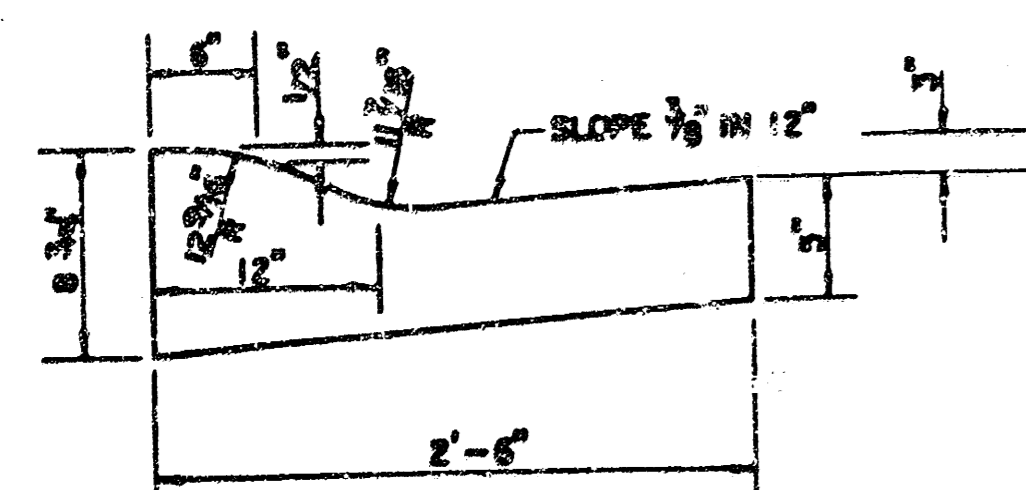


	DISTANCE FROM CENTERLINE (LT & RT)											
	0'	2'	4'	6'	7.5'	10'	12'	13'	15'	15.5'	15.67'	16.17'
A: TOP OF CURBS TO TOP OF SURFACE LIFT	.10	.14	.21	.27	.32	.39	.46	.49	---	---	---	---
B: TOP OF CURBS TO TOP OF BASE LIFT	.27	.31	.37	.44	.48	.56	.62	.65	---	---	---	---
C: TOP OF CURBS TO TOP OF ROCK BASE	.52	.56	.63	.69	.74	.81	.88	.91	.97	.98	.99	---
D: TOP OF CURBS TO TOP OF SUBGRADE	---	---	---	---	---	---	---	---	---	---	---	---

COMBINED CURB & GUTTER



ROLL TYPE COMBINED CURB & GUTTER



GENERAL NOTES

FABRIC BASE REINFORCEMENT SHALL BE 6 x 1100 BY TENSAR CORP. OR APPROVED EQUAL. FABRIC BASE REINFORCEMENT SHALL BE INSTALLED IN ACCORDANCE WITH MANUFACTURER'S RECOMMENDATIONS. CRUSHED ROCK SHALL BE UNIFORMLY GRADED FROM 1-1/2\"/>

ROCK BASE IS TO BE COMPACTED AND SMOOTHED WITH A STEEL FACED ROLLER PRIOR TO PLACEMENT OF ASPHALT. TACK COAT WILL NOT BE APPLIED TO ROCK BASE.

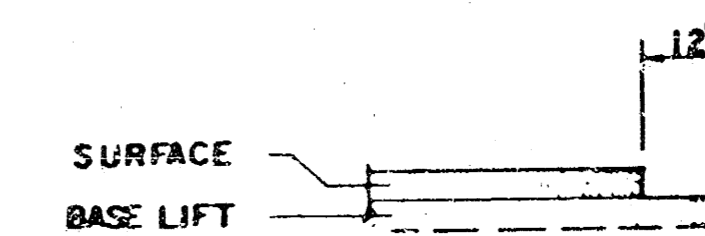
A TACK COAT OF EMULSIFIED ASPHALT (SC-1H OR CSS-1H) SHALL BE APPLIED AT AN APPROXIMATE RATE OF 0.05 GALLONS PER SQUARE YARD BETWEEN EACH LIFT OF ASPHALTIC MATERIAL.

BITUMINOUS BASE AND ASPHALTIC CONCRETE WEARING SURFACE SHALL BE PLACED WITH A LAYDOWN MACHINE HAVING AUTOMATIC CONTROLS FOR LINE AND GRADE.

CONSTRUCTION JOINTS IN EACH LIFT SHALL BE STAGGERED A MINIMUM DISTANCE OF ONE (1) FOOT FROM JOINTS IN PRECEDING LIFTS AND PLACED SO THAT A JOINT WILL BE CONSTRUCTED ON THE CENTERLINE OF THE TOP LIFT.

THE ASPHALTIC CONCRETE PAVEMENT BETWEEN THE COMBINED CURB AND GUTTER SHALL BE PAID AS SQUARE YARDS OF 5\"/>

TRANSVERSE CONSTRUCTION JOINTS



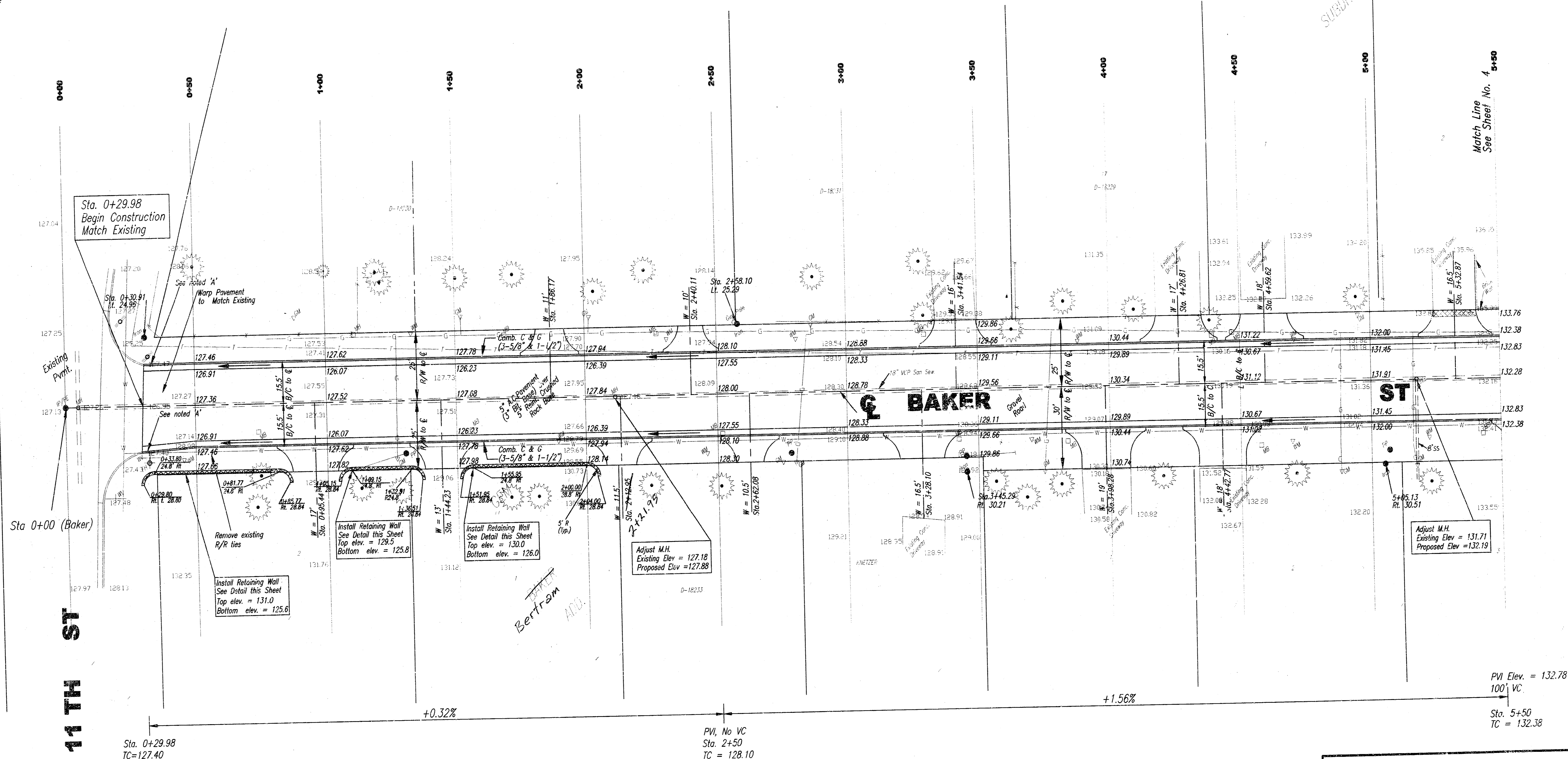
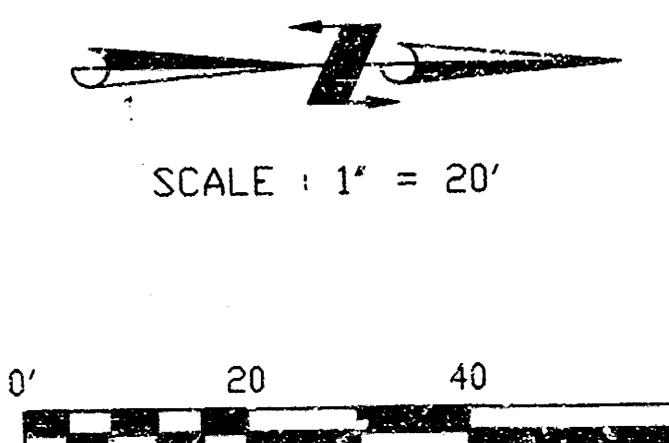
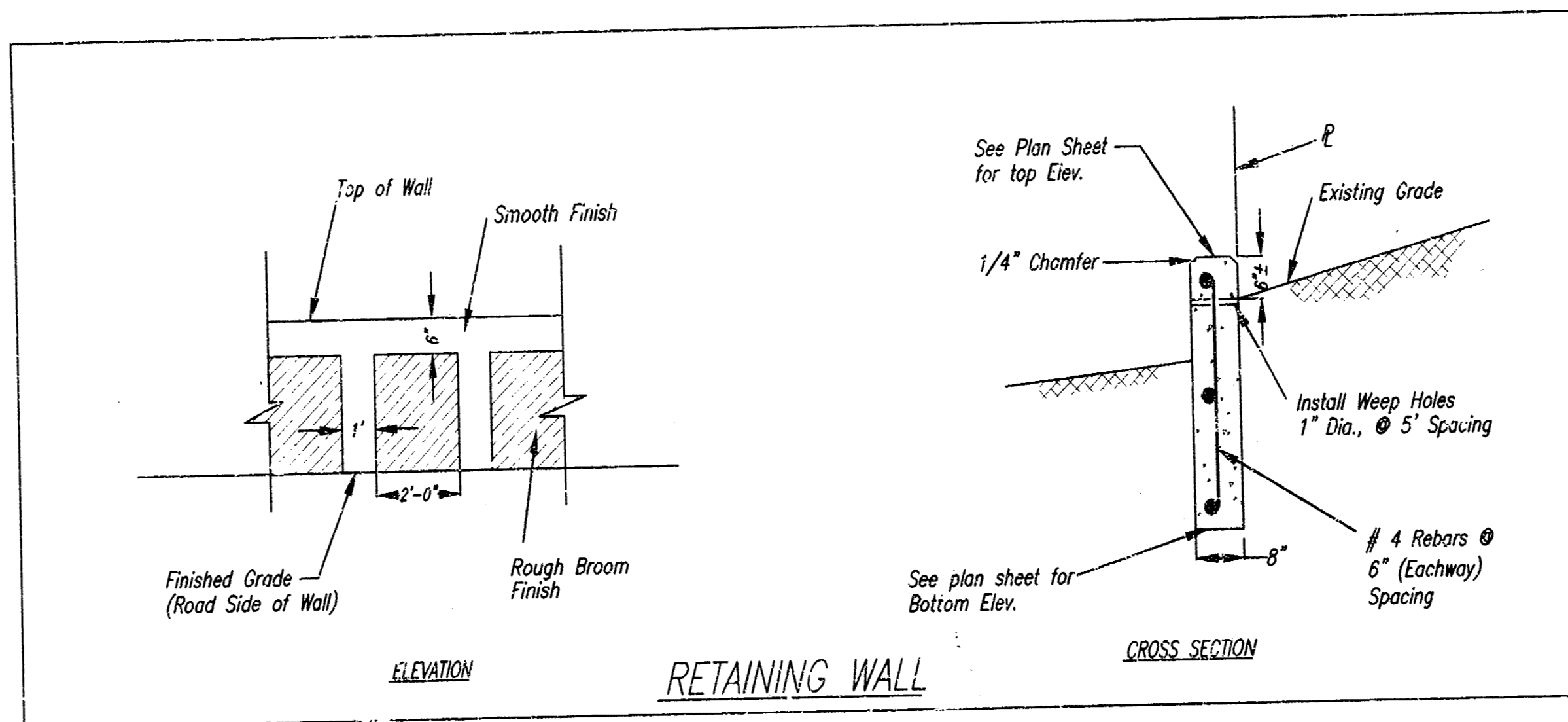
TRANSVERSE CONSTRUCTION JOINTS SHALL BE CONSTRUCTED IN FLEXIBLE BASE PAVEMENTS AT LOCATIONS WHERE PAVEMENT JOINS EXISTING FLEXIBLE BASE PAVEMENT AS SHOWN BY THE DETAIL. ALL COSTS ASSOCIATED WITH THE CONSTRUCTION OF THE TRANSVERSE JOINT SHALL BE INCLUDED IN THE BID PRICE FOR SQUARE YARDS 5\"/>

REVISED 1-3-92 JKB
REVISED 10-31-96 JKB

5\"/>

LEGEND

- Iron Pin or Rebar
- Light Pole
- Power Pole
- Manhole
- Fire Hydrant
- Sign
- Bushes
- Tree
- ▨ Remove & Replace Existing Conc. Driveway
- - - Fence
- - - Gas Line
- - - Telephone Line
- - - Water Line



EARTHWORK SUMMARY

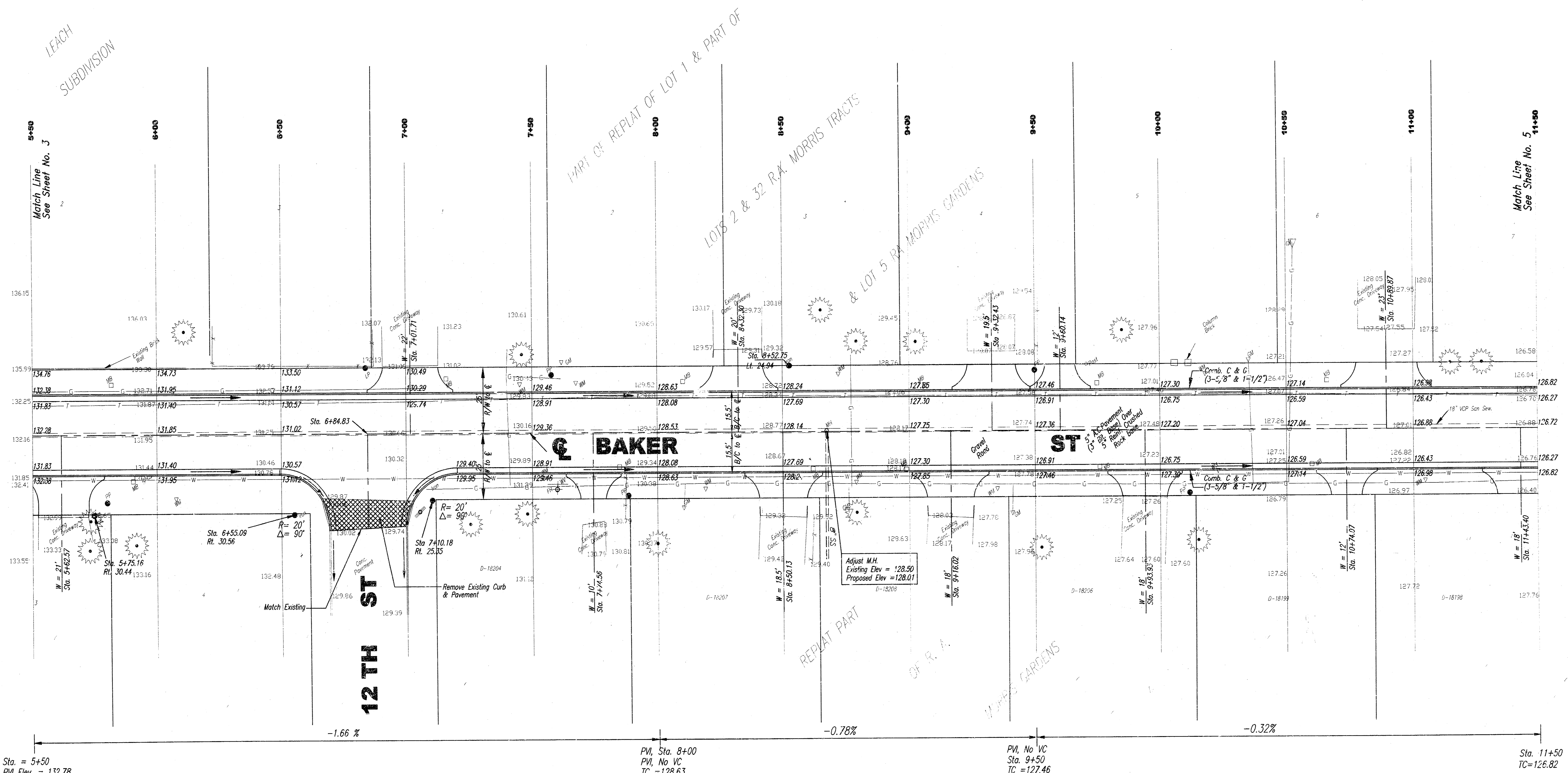
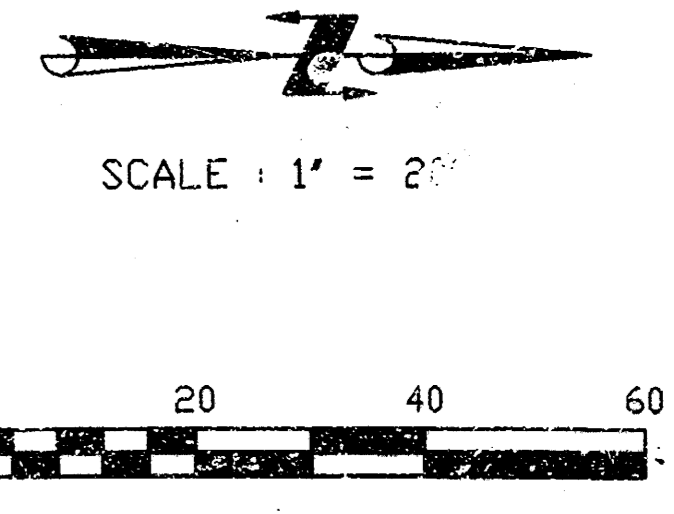
Excavation	=	1885 C.Y.
Loose Fill	=	113 C.Y.

Notes:
 a. Warp curb in 5' to match existing 6" curb.
 b. Top of curb elev. shown are for 6-5/8" Curb.
 c. Match existing elevation at R/W line unless finished elevation are shown in plan sheet.

**Plan Sheet
Baker Street**

SCALE:	APPROVED:	DRAWN BY:
DATE:		CHECKED:
PROJECT NO. 472-82905		SHEET NO. 3 OF 9

MUNICIPAL ENGINEERS
 254-LAURA, SUITE 201
 WICHITA, KANSAS 67211
 316-262-5642



Sta. = 5+50
 PVI Elev. = 132.78
 100' VC
 TC = 132.38

PVI, Sta. 8+00
 PVI, No VC
 TC = 128.63

PVI, No VC
 Sta. 9+50
 TC = 127.46

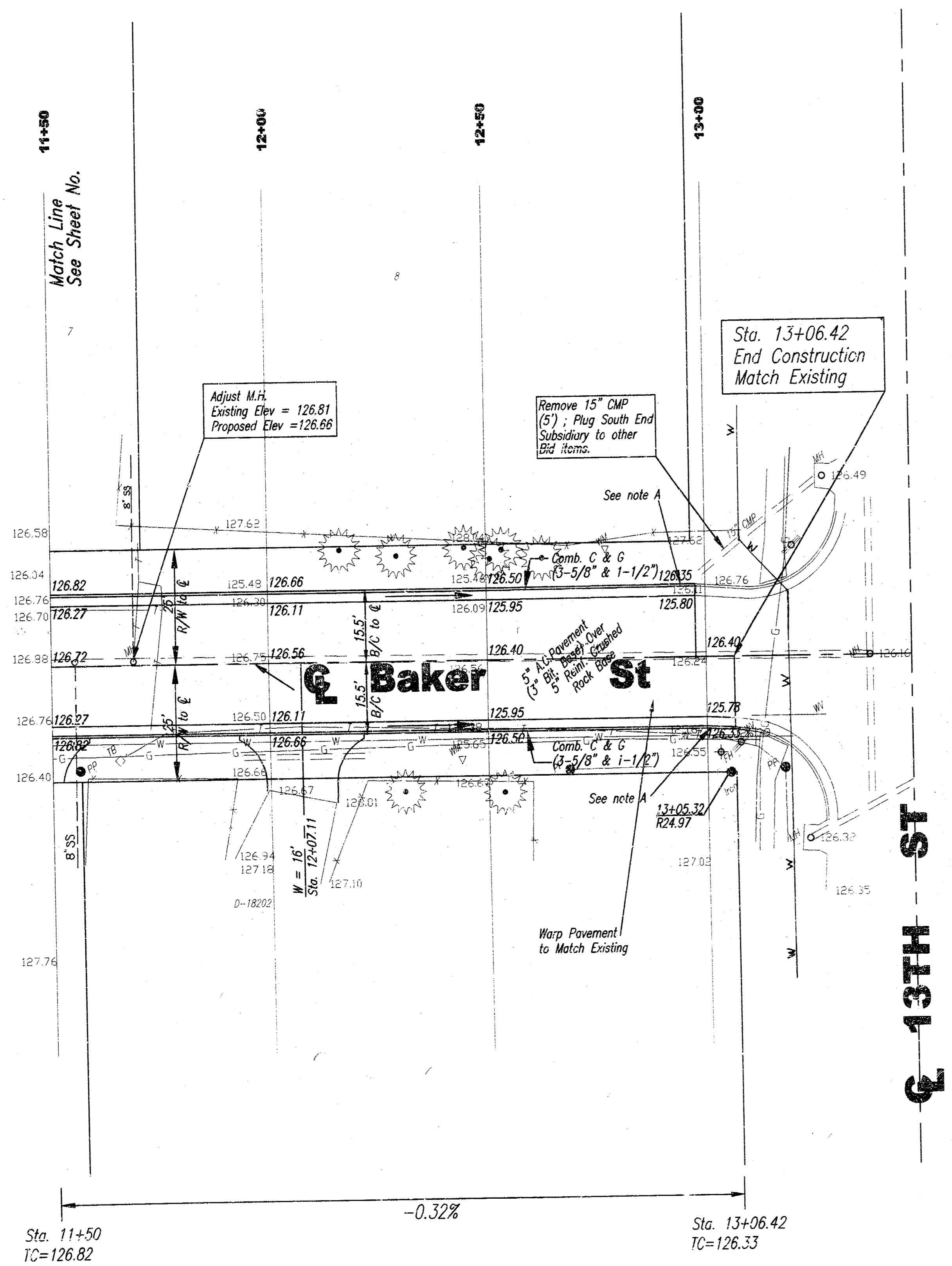
Sta. 11+50
 TC = 126.82

- Notes:
- a. Warp curb in 5' to match existing 6" curb.
 - b. Top of curb elev. shown are for 6-5/8" Curb.
 - c. Match existing elevation at R/W line unless finished elevation are shown in plan sheet.

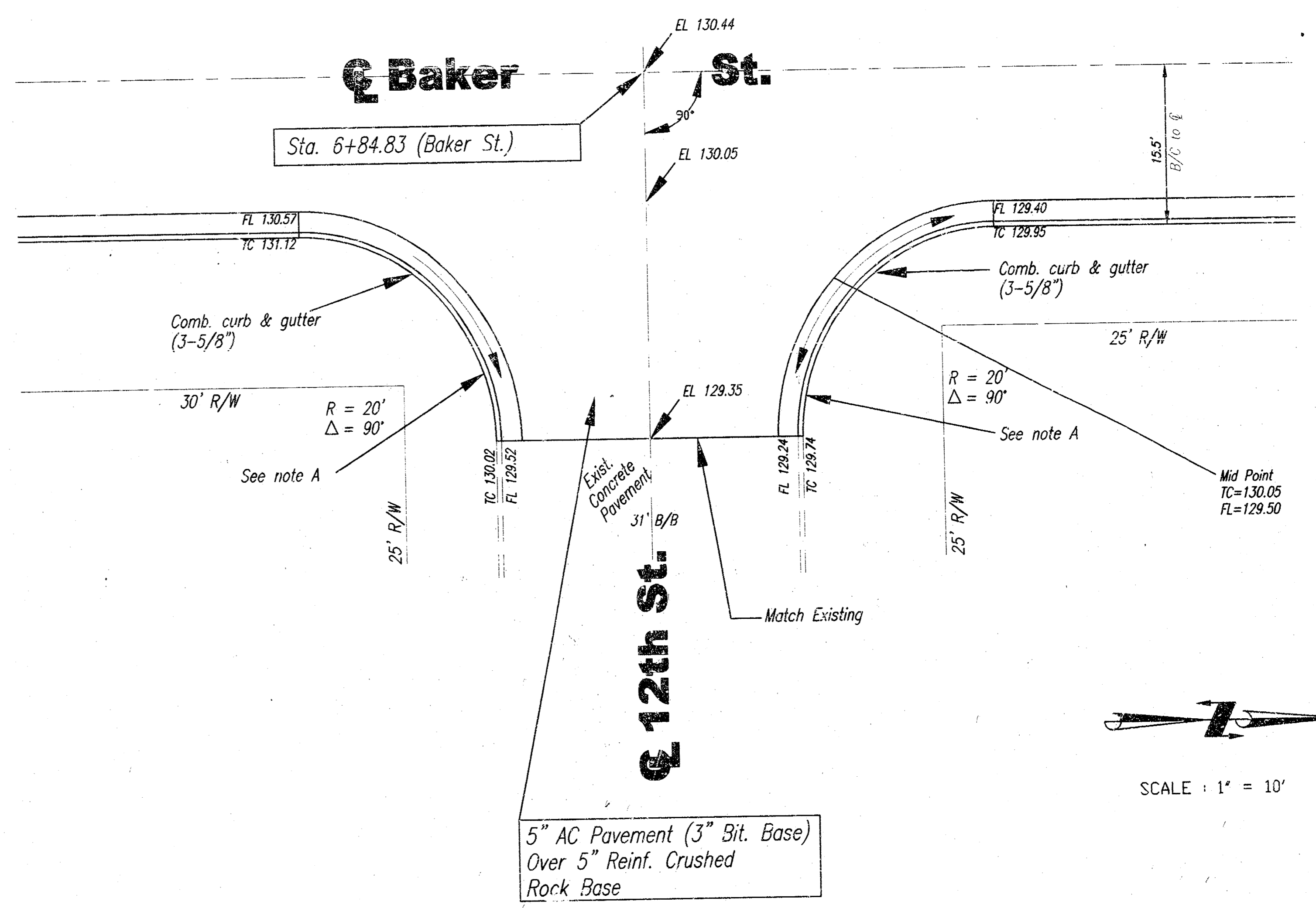
Plan Sheet Baker Street		
SCALE:	APPROVED:	DRAWN BY:
DATE:		CHECKED:
PROJECT NO. 472-82905		SHEET NO. 4 OF 9
MUNICIPAL ENGINEERS 254-LAURA, SUITE 201 WICHITA, KANSAS 67211 316-262-3842		



SCALE : 1" = 20'



Notes:
 a. Warp curb in 5' to match existing 6" curb.
 b. Top of curb elev. shown are for 6-5/8" Curb.
 c. Match existing elevation at R/W line unless finished elevation are shown in plan sheet.



INTERSECTION DETAIL

Notes:
 a. Warp curb in 5' to match existing 6" curb.
 b. Top of curb elev. shown are for 6-5/8" Curb.

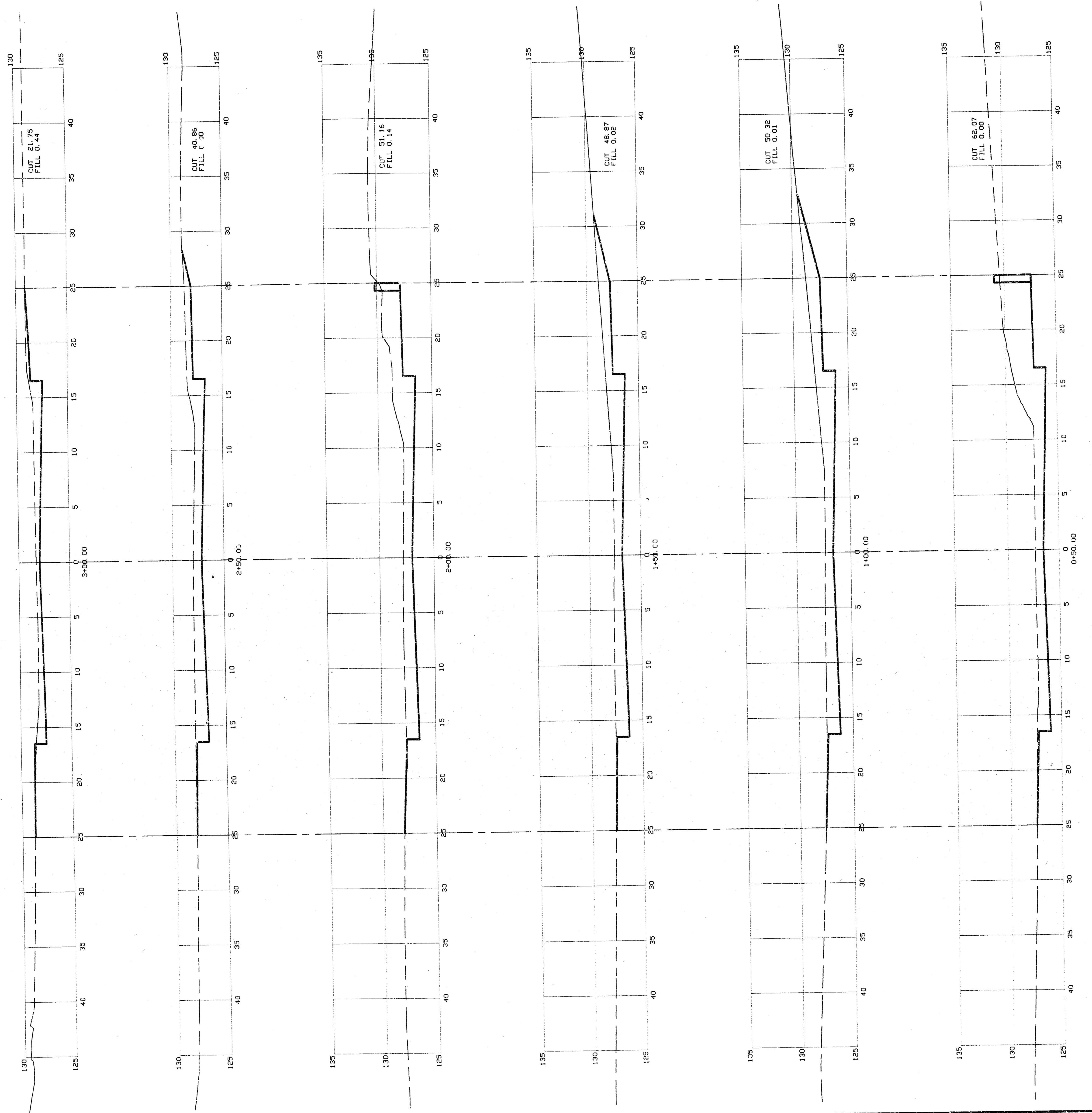


SCALE : 1" = 10'

Plan Sheet
Baker Street

SCALE:	APPROVED:	DRAWN BY:
DATE:	CHECKED:	SHEET NO.
PROJECT NO.	472-82905	5 OF 9

Municipal Engineers
 254-LAURA, SUITE 201
 WICHITA, KANSAS 67211
 316-262-3842

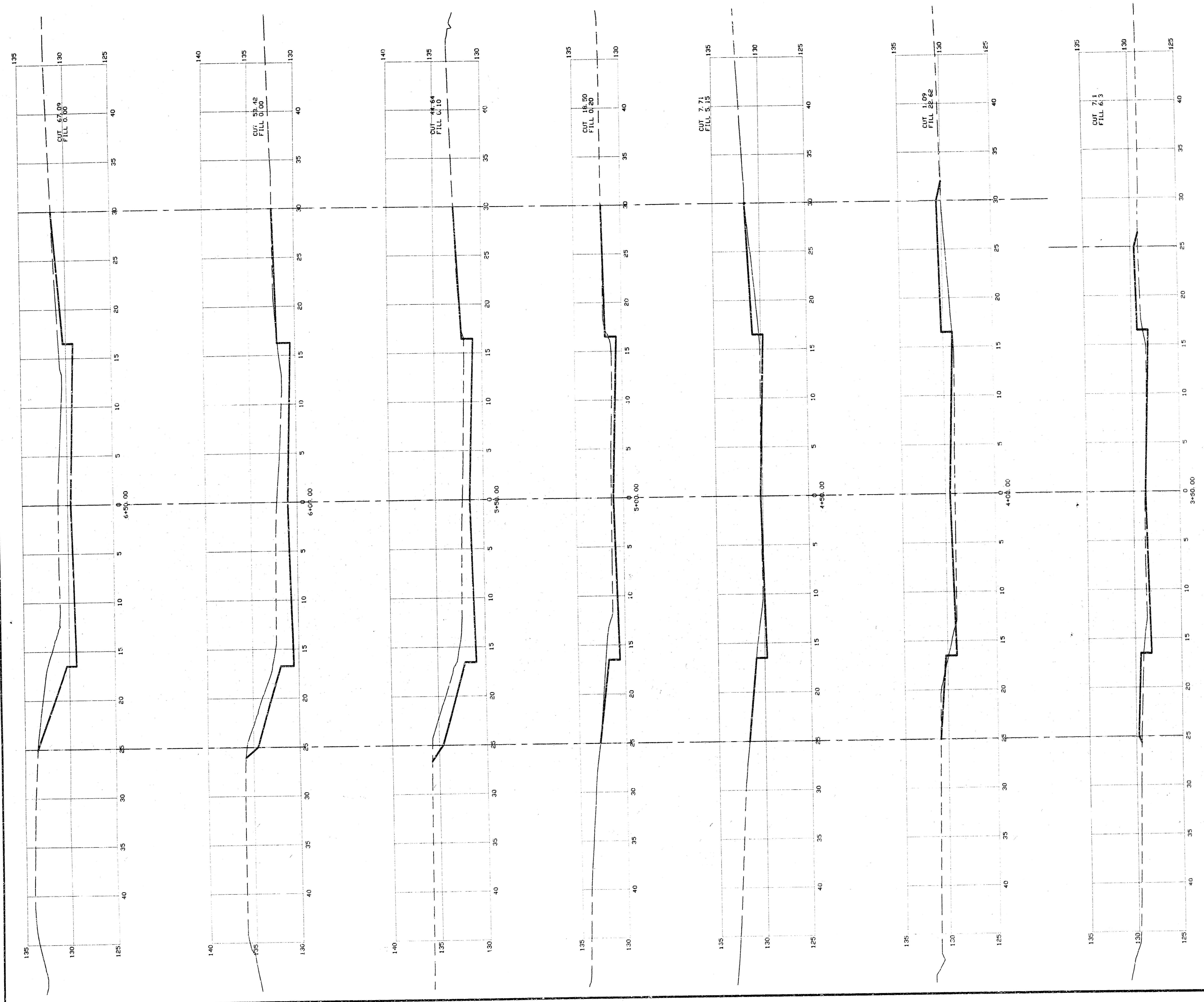


Horizontal Scale 5
Vertical Scale 5

*Cross Sections
Baker St.*

SCALE:	APPROVED:	DRAWN BY:	CHECKED:
DATE:			SHEET NO.
PROJECT NO:	472-82905		6 OF 9

MUNICIPAL ENGINEERS
254-LAURA, SUITE 201
WICHITA, KANSAS 67211
316-262-3842

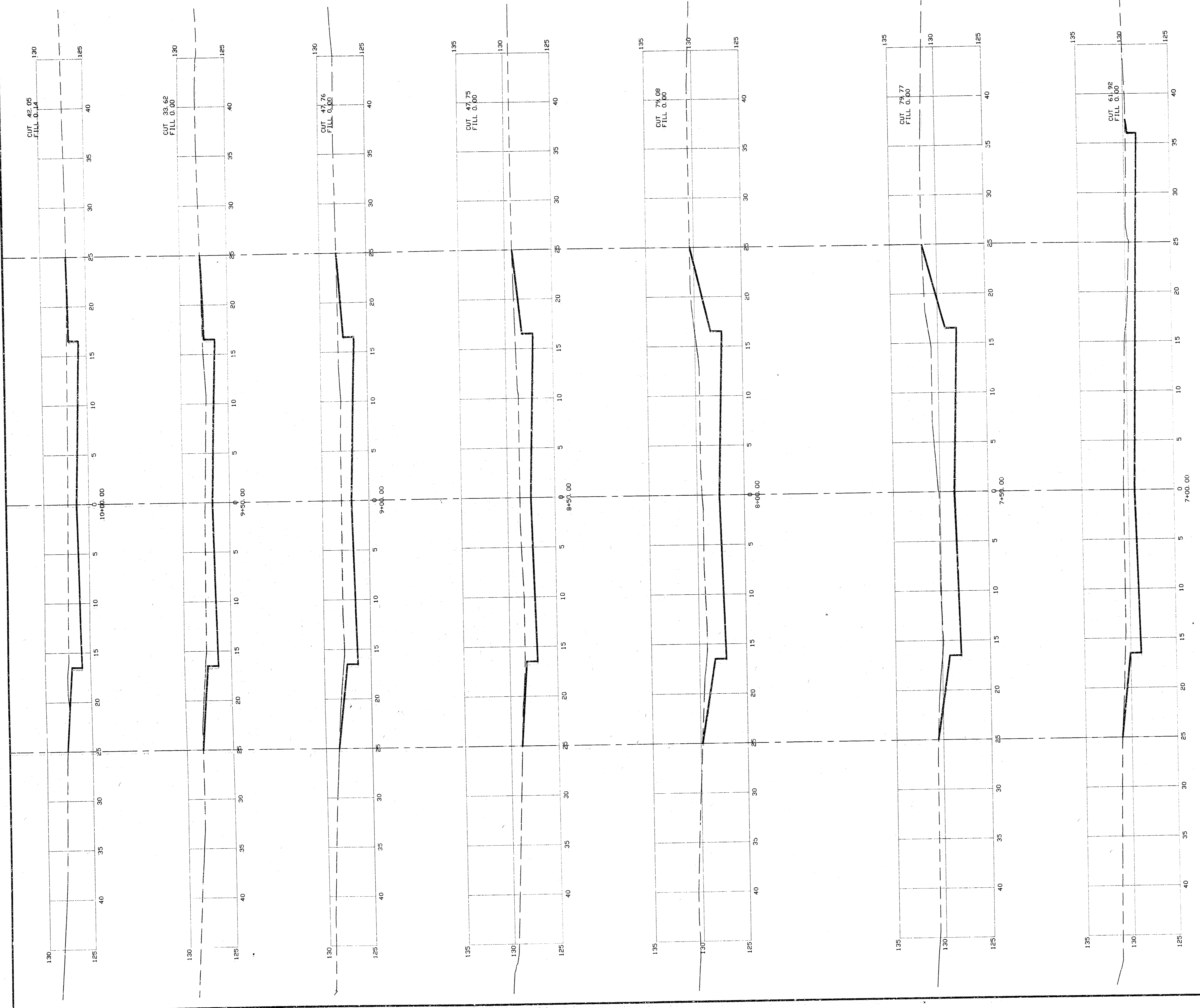


Horizontal Scale 5
Vertical Scale 5

**Cross Sections
Baker St.**

SCALE:	APPROVED:	DRAWN BY:	
DATE:		CHECKED:	
PROJECT NO:	472-88905	SHEET NO.:	7 OF 9

MUNICIPAL ENGINEERS
254-LAURA, SUITE 201
WICHITA, KANSAS 67211
316-262-3842

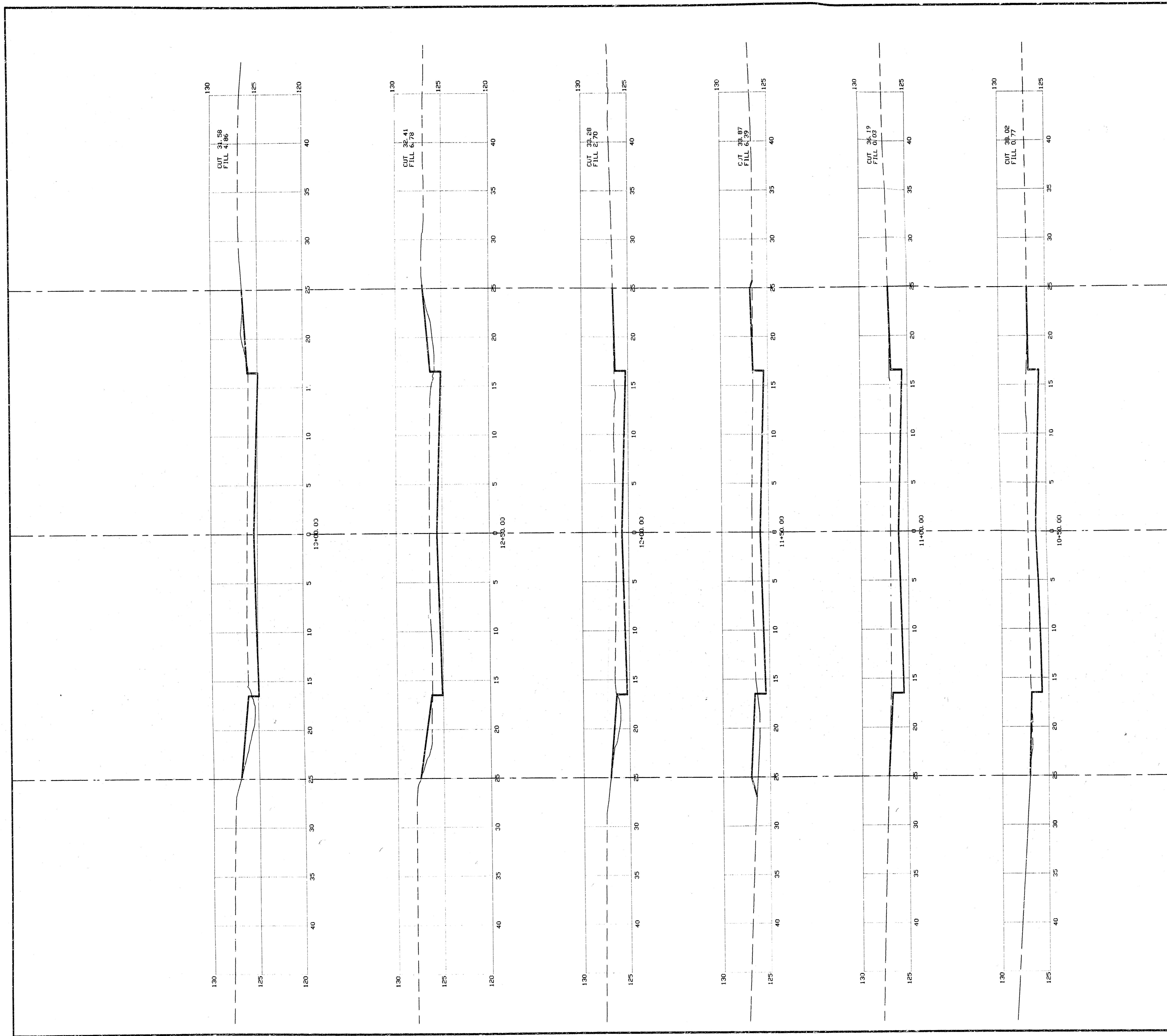


Horizontal Scale 5
Vertical Scale 5

*Cross Sections
Baker St.*

SCALE:	APPROVED:	DRAWN BY:	
DATE:		CHECKED:	
PROJECT NO:	472-02905	SHEET NO.:	8 OF 9

MUNICIPAL ENGINEERS
254-LAURA, SUITE 201
WICHITA, KANSAS 67211
316-262-3842



Vertical Scale 5
Horizontal Scale 15

**Cross Sections
Baker St.**

SCALE:	APPROVED:	DRAWN BY:	
DATE:	CHECKED:		
PROJECT NO:	472-82905	SHEET NO.:	9 OF 9

MUNICIPAL ENGINEERS
 254-LAURA, SUITE 201
 WICHITA, KANSAS 67211
 316-262-3842