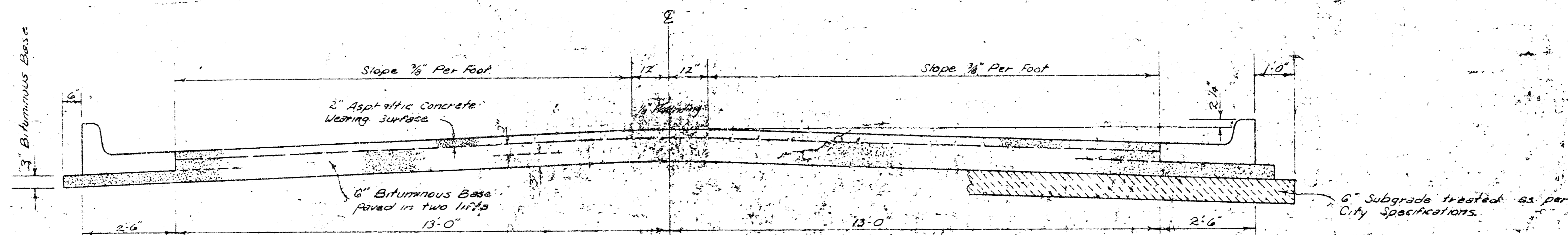


Baehr

N.L. 2nd Street To S.L. 3rd Street



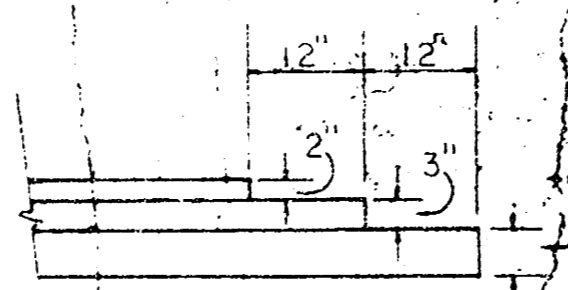
TYPICAL SECTION

3" ASPHALTIC CONCRETE PAVEMENT WITH BITUMINOUS BASE

A TACK COAT OF EMULSIFIED ASPHALT (SS-IH) SHALL BE APPLIED AT AN APPROXIMATE RATE OF 0.05 GALLONS PER SQ. YD. BETWEEN LIFTS OF ASPHALTIC MATERIALS WHEN ORDERED BY THE ENGINEER. TACK COAT WILL NOT BE PAID FOR DIRECTLY AND SHALL BE CONSIDERED AS SUBSIDIARY TO PRICE BID FOR ASPHALTIC PAVEMENT.

BITUMINOUS BASE AND ASPHALTIC CONCRETE WEARING SURFACES SHALL BE PLACED WITH A LAYDOWN MACHINE HAVING AUTOMATIC ELECTRONIC CONTROLS FOR CROWN AND GRADE. CONSTRUCTION JOINTS IN EACH LIFT SHALL BE STAGGERED A MINIMUM DISTANCE OF 1' WITH JOINTS IN PRECEDING LIFTS AND SUCH THAT A JOINT WILL BE CONSTRUCTED ON THE PAVEMENT CENTERLINE IN THE TOP LIFT.

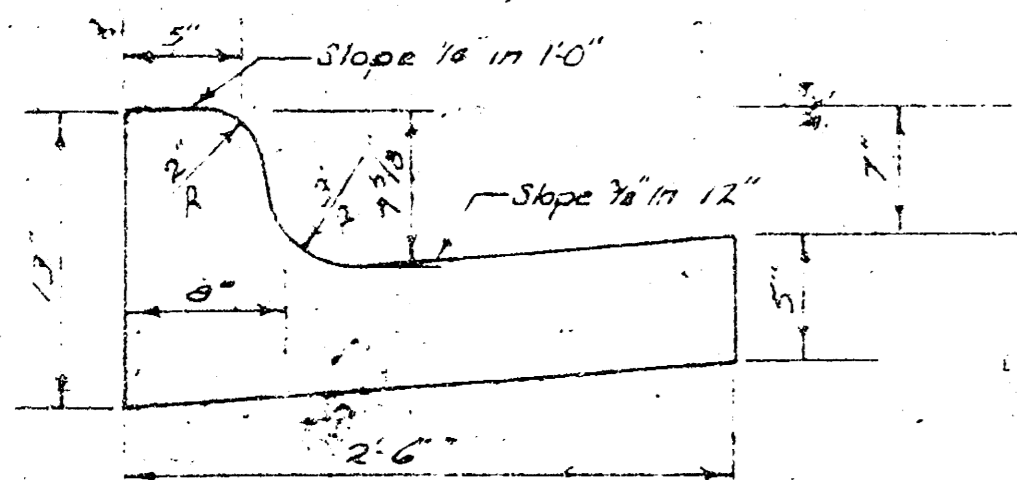
DETAIL OF TRANSVERSE CONSTRUCTION JOINTS



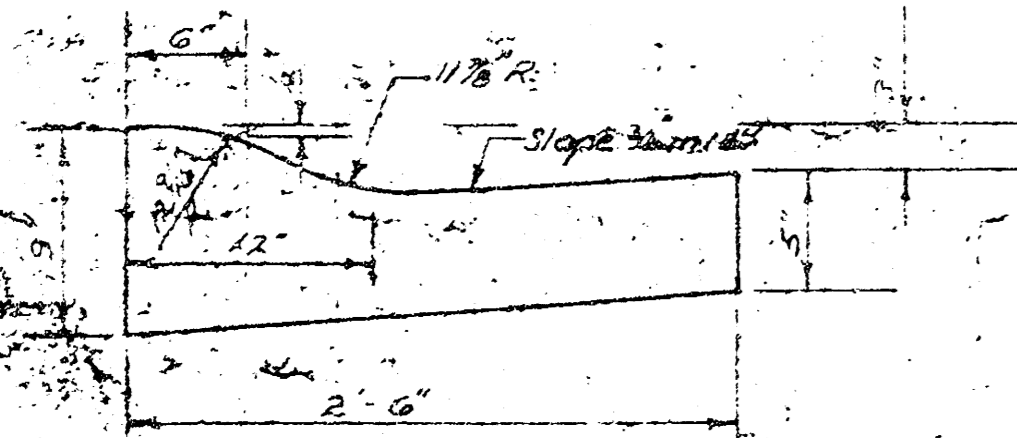
TRANSVERSE CONSTRUCTION JOINTS SHALL BE CONSTRUCTED IN FLEXIBLE BASE PAVEMENTS AT LOCATIONS WHERE PAVEMENT TEMPORARILY ENDS TO FACILITATE FUTURE PAVEMENT CONSTRUCTION AS SHOWN BY DETAIL. THE COST OF CONSTRUCTING THE TRANSVERSE CONSTRUCTION JOINTS SHALL NOT BE MEASURED OR PAID FOR DIRECTLY BUT SHALL BE INCLUDED IN THE BID PRICE FOR SQUARE YARDS OF ASPHALTIC CONCRETE PAVEMENT.

The A.C. pavement between the Comb. Curb & gutter shall be paid as 3/4 inch 2" A.C. Pavement (2" Bituminous Base). The Bituminous Base under the Comb. Curb & gutter shall be paid as 3/4 inch 3" Bituminous Base.

COMBINED CURB & GUTTER



ROLL TYPE CURB & GUTTER



CITY OF WICHITA, KANSAS

DEPARTMENT OF PUBLIC WORKS — ENGINEERING

Res. W. SHANNON

CITY ENGINEER

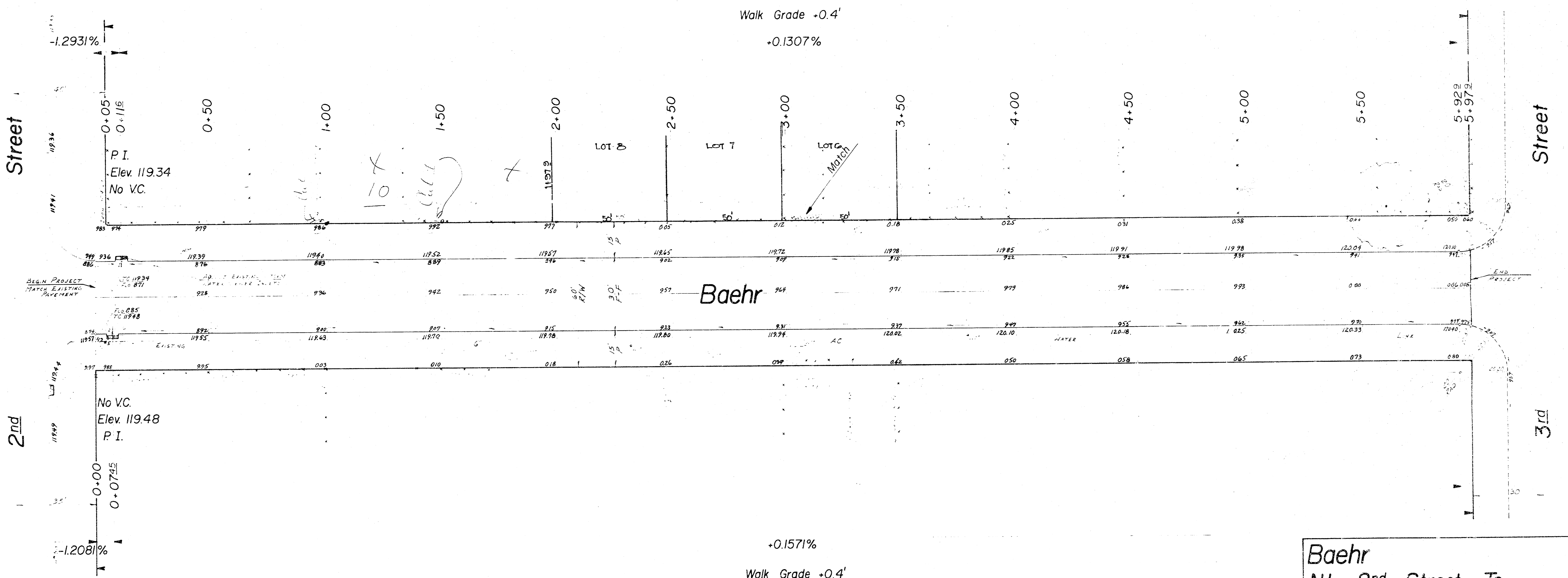
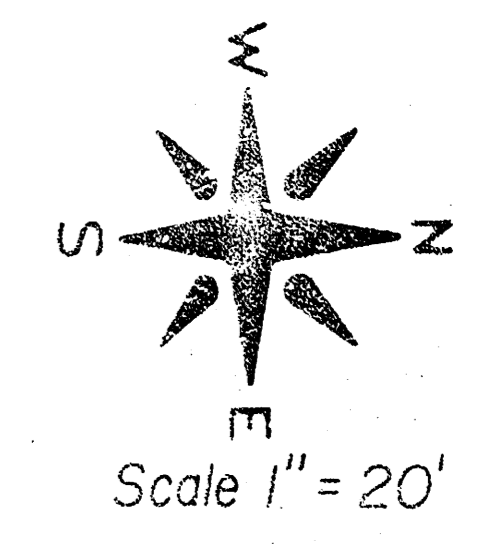
DATE: \_\_\_\_\_

PROJ. NO. 472 76 245 80862 000 000 001  
Sheet 1 of 3

Baseline Is Center Of Baehr

B.M. 122.95 "M" In Mueller, Fire Hydrant At Northeast Corner 3rd Street & Anna.

No More Than 12 - 20' Drives Are To Be Constructed On This Project.



SURVEY CHECKED BY DUD (P)  
 PLAN CHECKED BY  
 ENG. A.E. HUNTER  
 CHECKED

Earthwork Property

EXCAVATION	778.0 Cu Yds.
+10%	77.8 Cu Yds.
TOTAL	855.8 Cu Yds.

Earthwork City

EXCAVATION	14.0 Cu Yds.
+10%	1.4 Cu Yds.
TOTAL	15.4 Cu Yds.

Indicates Existing Storm Water Sewer Inlet  
 Indicates Concrete To Be Removed  
 Indicates Conc. To Be Removed & Replaced  
 Manipulation 2,192.3 Sq. Yds.

**Baehr**  
 N.L. 2nd Street To  
 S.L. 3rd Street  
 30' F-F With Comb. Cb. & Gtr.  
 City Of Wichita, Kansas  
 Dean Sellers City Engineer  
 Proj No 472 76 245 80862 000 000 001  
 Date  
 Sheet 2 of 3

**FILMED FROM THE BEST AVAILABLE COPY.....**