

Street Improvements For

# ASHLEY PARK ADDITION

**ASHLEY PARK:** From the W.L. Lot 20, Blk. 4 to the N.L. Lot 12, Blk. 4

**ASHLEY PARK CT.:** From the W.L. Ashley Park to and Including Cul-De-Sac  
Serving Lots 7 - 17 Block 3

Project Number

## 472-76-245-81951-000-000-001

### CITY OF WICHITA, KANSAS

Michael E. Lindebak - City Engineer

INDEX NO. 760198

#### GENERAL NOTES

1. TITLE SHEET
  2. 35' PAVEMENT DETAIL
  3. 29' PAVEMENT DETAIL
  - 4-5. ASHLEY PARK
  6. ASHLEY PARK COURT
  7. INCIDENTAL DRAINAGE
  8. STANDARD 1A INLET DETAIL
  - 9-10. EARTHWORK CROSS SECTIONS
  11. PLAT OF ASHLEY PARK ADDITION
1. Utility service lines, poles, valve boxes, meters, and etcetera are to be adjusted as necessary by others prior to construction unless the plans specifically call for their adjustment by the Contractor or unless the plans specifically identify a utility to be adjusted by its owner during construction. Existing utilities and their location, as shown on the plans, represent the best information obtainable for design. The contractor will be required to work around existing utilities within the right-of-way which do not conflict with proposed construction.
  2. No more than 3 drives 4 feet in width, or equivalent combinations thereof, are to be constructed with this project.
  3. The Contractor shall be responsible for preserving property irons. The Contractor will be required to re-establish any property irons which are damaged or destroyed by his construction operations. Such irons shall be re-established by a licensed land surveyor in accordance with state laws.

*Stacy Sw.  
B. Wood  
7/31  
MSB*

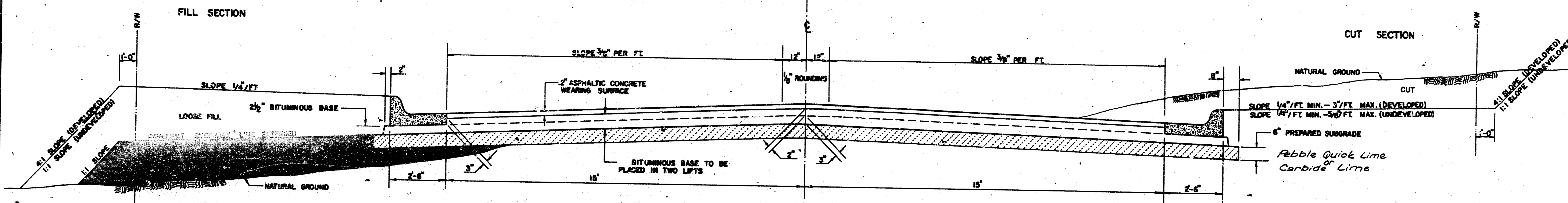


TITLE SHEET					
<b>BAUGHMAN COMPANY P. A.</b> SURVEYING & ENGINEERING 316/282-7271 • 315 ELLIS • WICHITA, KANSAS 67211					REV.
PROJECT NUMBER <b>472-76-245-81951-000-000-001</b>					SHEET 1
DESIGN MSB	DRAWN MSB	APPROVED <i>[Signature]</i>	DATE 5/02	SCALE 20	OF 11

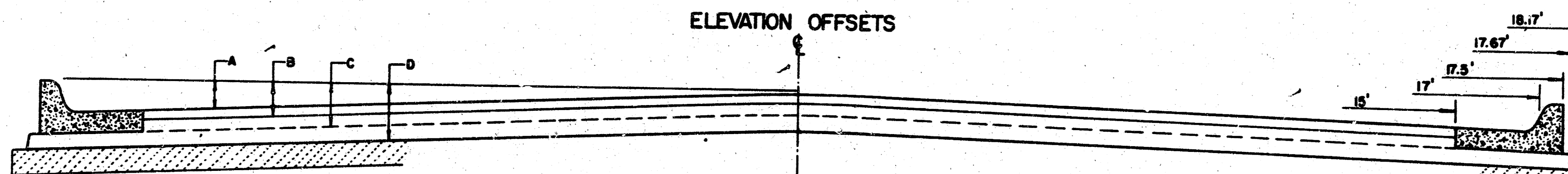
FILMED FROM THE BEST AVAILABLE COPY

# TYPICAL 35' PAVEMENT DETAILS

## TRANSVERSE SECTION



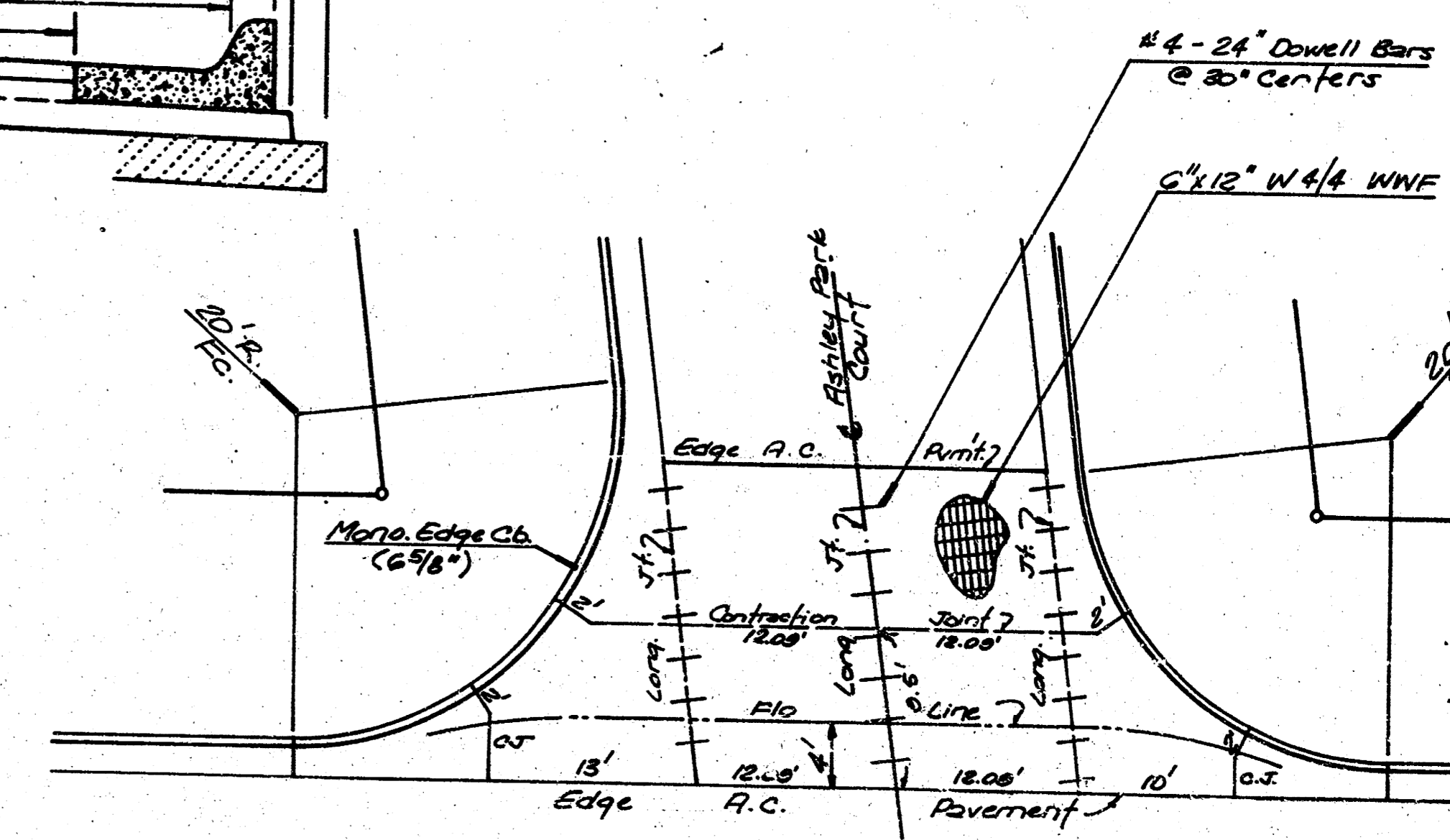
## ELEVATION OFFSETS



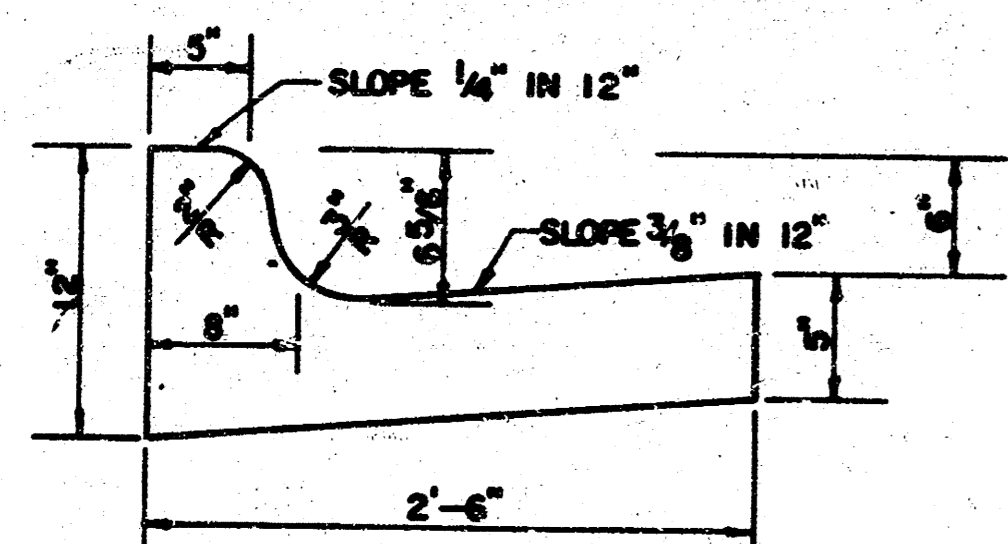
	DISTANCE FROM CENTERLINE (LT. & RT.)												
	0'	2'	4'	6'	8.5'	10'	12'	14'	15'	17'	17.5'	17.67'	18.17'
A: TOP OF CURBS TO TOP OF SURFACE LIFT	0.04	0.08	0.14	0.21	0.29	0.33	0.39	0.46	0.49	—	—	—	—
B: TOP OF CURBS TO TOP OF UPPER BASE LIFT	0.21	0.25	0.31	0.37	0.45	0.50	0.56	0.62	0.65	—	—	—	—
C: TOP OF CURBS TO TOP OF LOWER BASE LIFT	0.37	0.43	0.50	0.57	0.67	0.72	0.79	0.87	0.90	0.98	1.00	1.00	—
D: TOP OF CURBS TO TOP OF SUBGRADE	0.62	0.67	0.74	0.81	0.90	0.95	1.02	1.08	1.12	1.19	1.21	1.21	1.23

## VALLEY GUTTER DETAIL

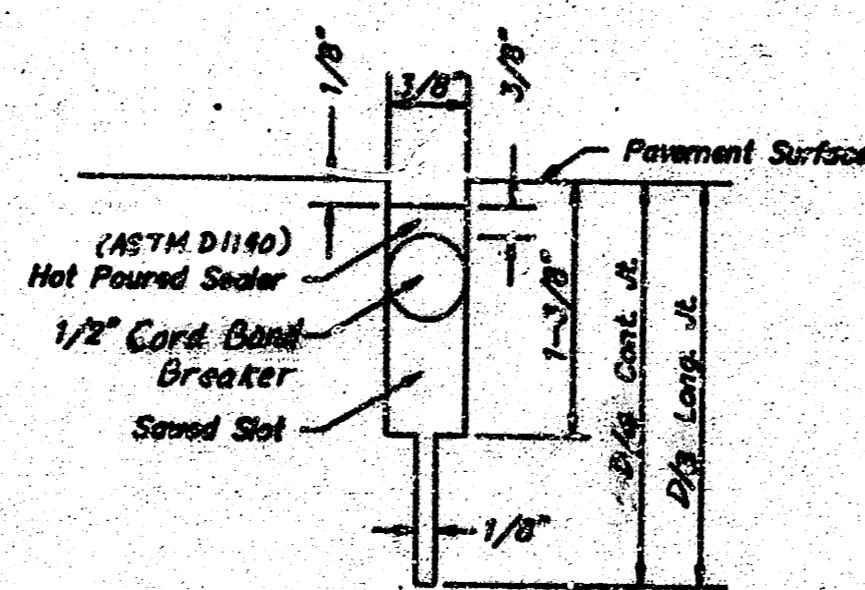
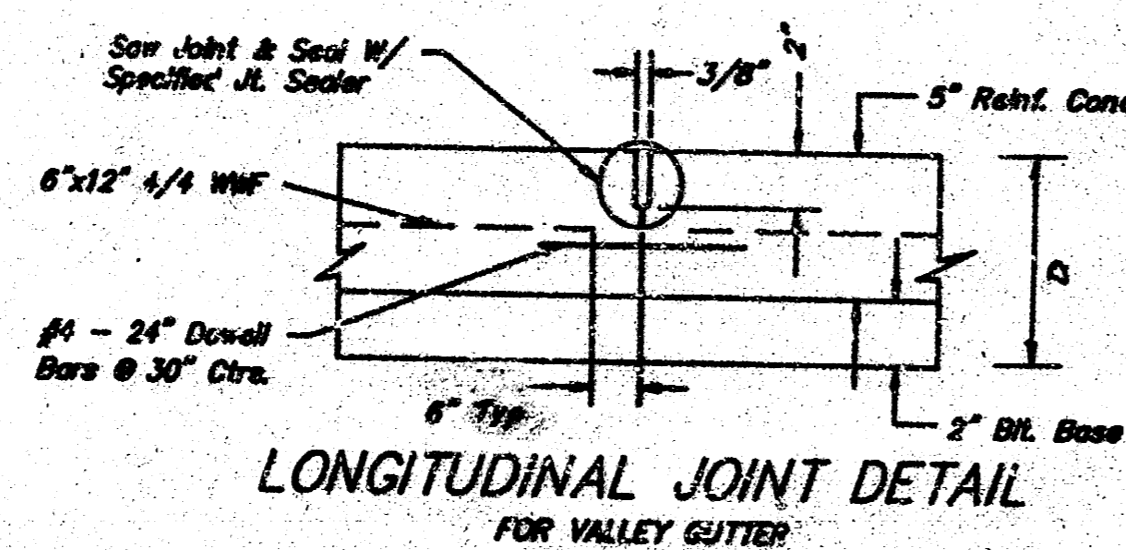
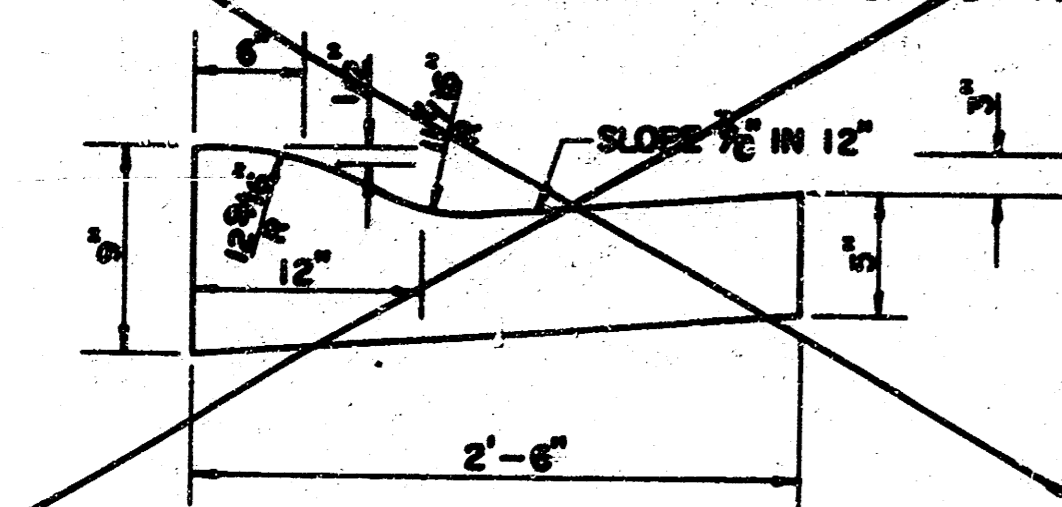
ASHLEY PARK & ASHLEY PARK COURT



## COMBINED CURB & GUTTER



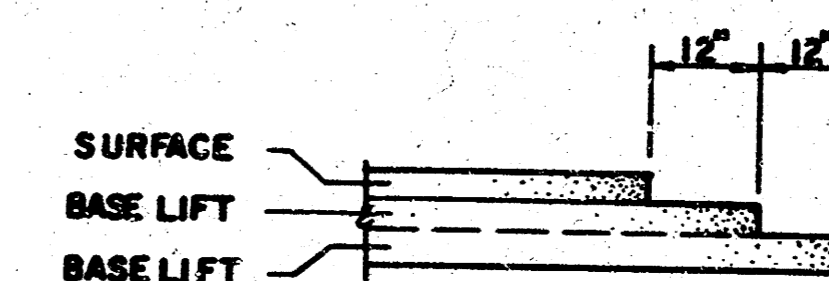
## ROLL TYPE COMBINED CURB & GUTTER



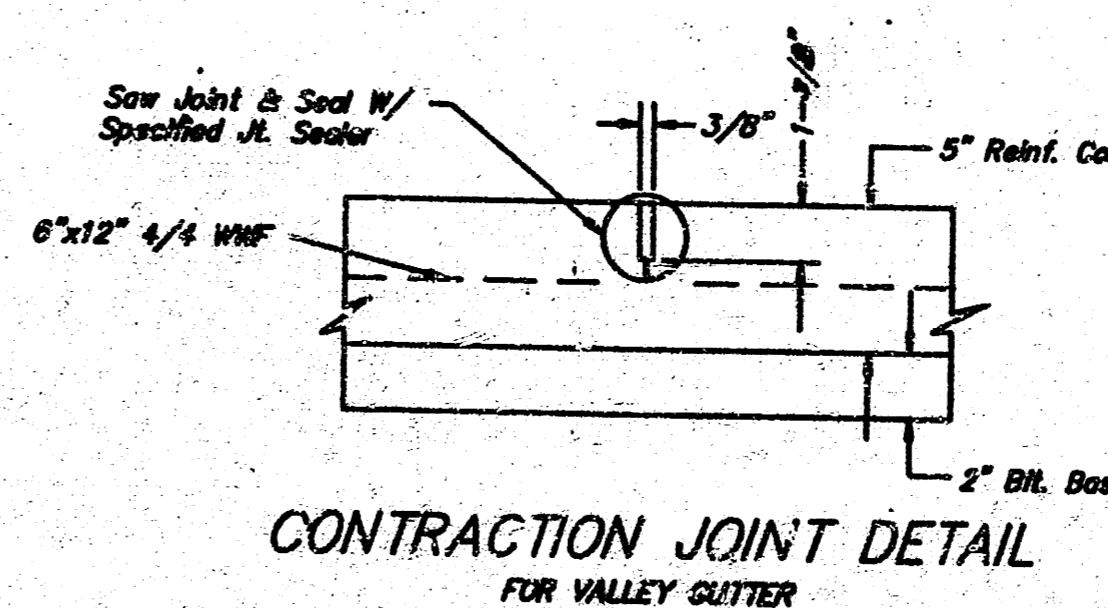
## GENERAL NOTES

- 1) THE ASPHALTIC CONCRETE PAVEMENT BETWEEN THE COMBINED CURB AND GUTTER SHALL BE PAID AS SQUARE YARDS OF 7" ASPHALTIC CONCRETE (5" BITUMINOUS BASE).
- 2) THE BITUMINOUS BASE UNDER AND BEHIND THE COMBINED CURB AND GUTTER SHALL BE PAID AS SQUARE YARDS OF 2 1/2" BITUMINOUS BASE.
- 3) A TACK COAT OF EMULSIFIED ASPHALT (SC-1H OR CSS-1H) SHALL BE APPLIED AT AN APPROXIMATE RATE OF 0.05 GALLONS PER SQUARE YARD BETWEEN EACH LIFT OF ASPHALTIC MATERIAL.
- 4) BITUMINOUS BASE AND ASPHALTIC CONCRETE WEARING SURFACE SHALL BE PLACED WITH A LAYDOWN MACHINE HAVING AUTOMATIC CONTROLS FOR LINE AND GRADE.
- 5) CONSTRUCTION JOINTS IN EACH LIFT SHALL BE STAGGERED A MINIMUM DISTANCE OF ONE (1) FOOT FROM JOINTS IN PRECEDING LIFTS AND PLACED SO THAT A JOINT WILL BE CONSTRUCTED ON THE CENTERLINE OF THE TOP LIFT.
- 6) CONTRACTOR TO BID ONLY ONE SUBGRADE TREATMENT ALTERNATE WHEN ALTERNATES ARE PROVIDED IN THE PROPOSAL AND CONTRACT. THE ALTERNATE CHOSEN BY THE SUCCESSFUL BIDDER SHALL BE USED IN CONSTRUCTING THIS PROJECT.

## TRANSVERSE CONSTRUCTION JOINTS



TRANSVERSE CONSTRUCTION JOINTS SHALL BE CONSTRUCTED IN FLEXIBLE BASE PAVEMENTS AT LOCATIONS WHERE PAVEMENT JOINTS EXISTING FLEXIBLE BASE PAVEMENT AS SHOWN BY THE DETAIL. ALL COSTS ASSOCIATED WITH THE CONSTRUCTION OF THE TRANSVERSE JOINT SHALL BE INCLUDED IN THE BID PRICE FOR SQUARE YARDS 7" ASPHALTIC CONCRETE (5" BITUMINOUS BASE).

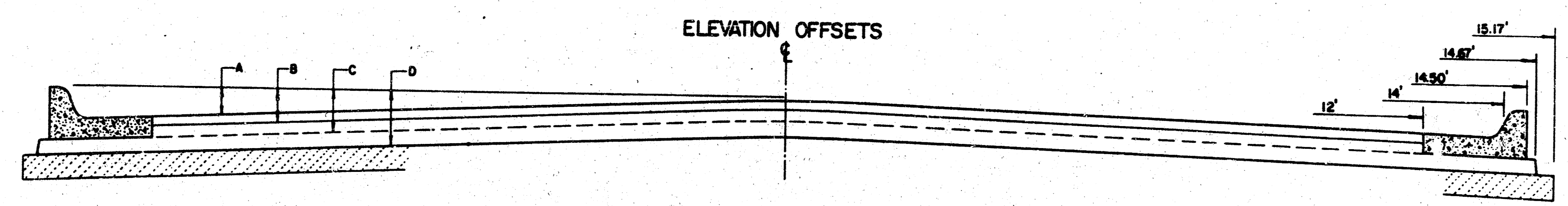
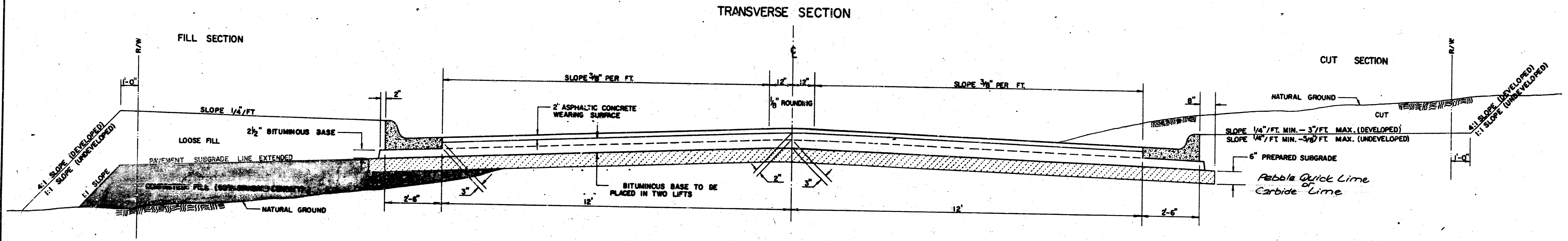


7 INCH RESIDENTIAL ASPHALTIC CONCRETE PAVEMENT WITH 5 INCH BITUMINOUS BASE  
CITY OF WICHITA, KANSAS

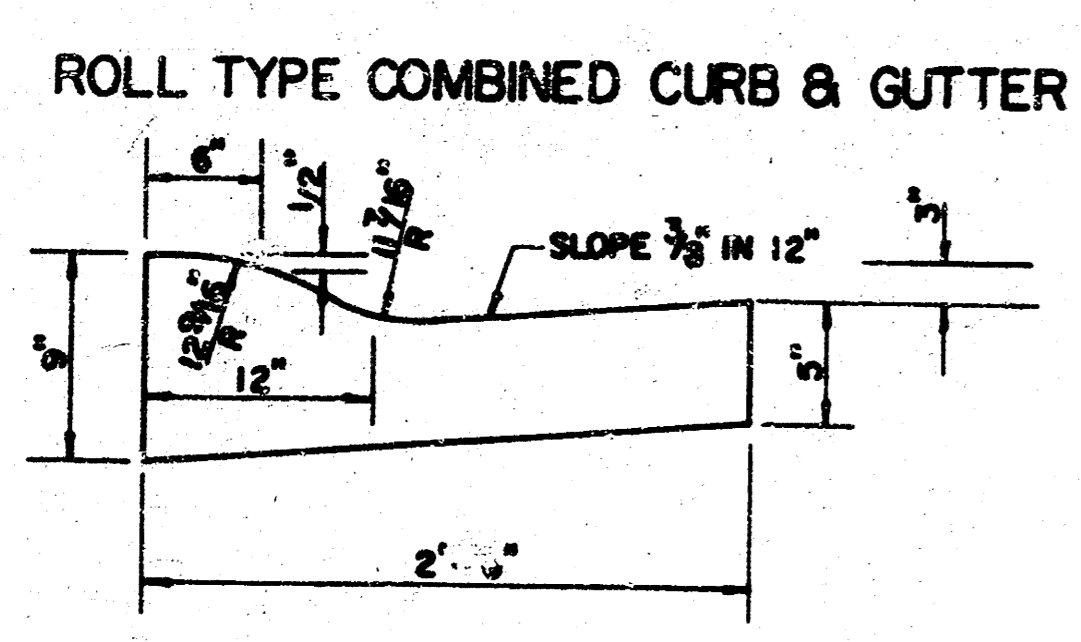
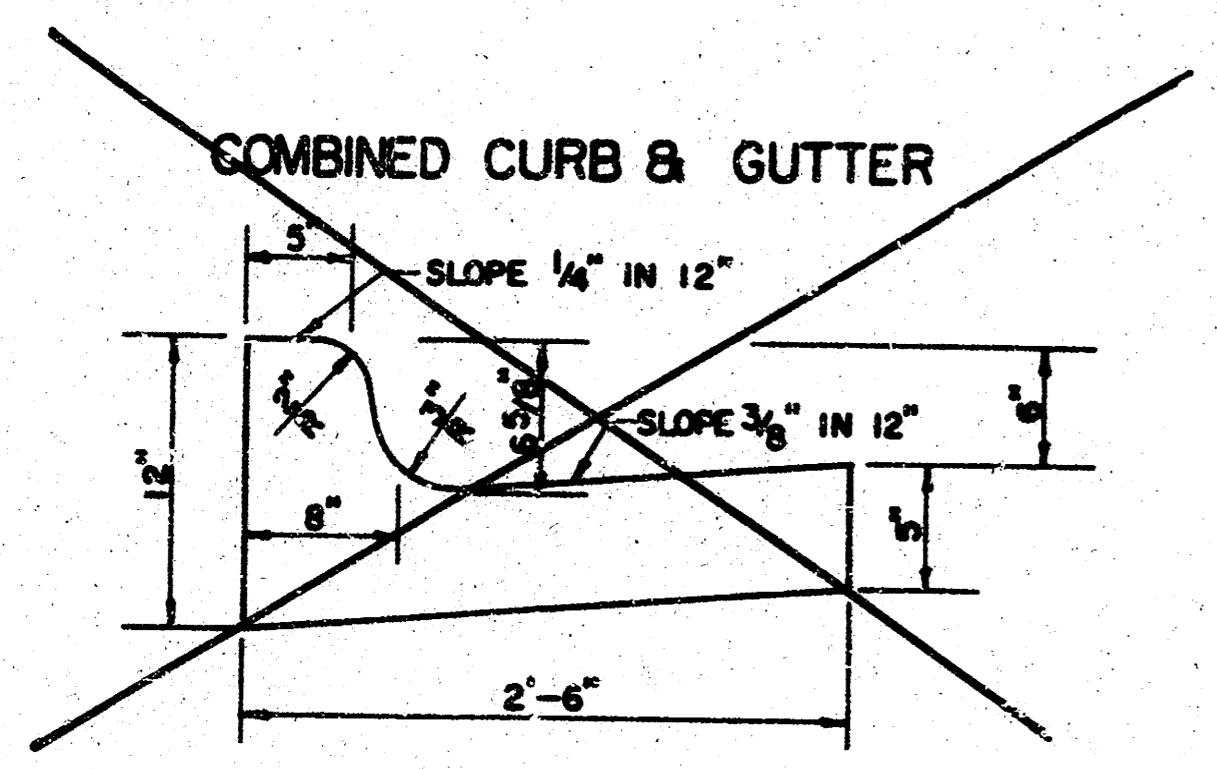
PROJECT NUMBER  
472-78-245-81951-000-000-001

FILMED FROM THE BEST AVAILABLE COPY

# TYPICAL 29' PAVEMENT DETAILS ADNEY PARK CT.



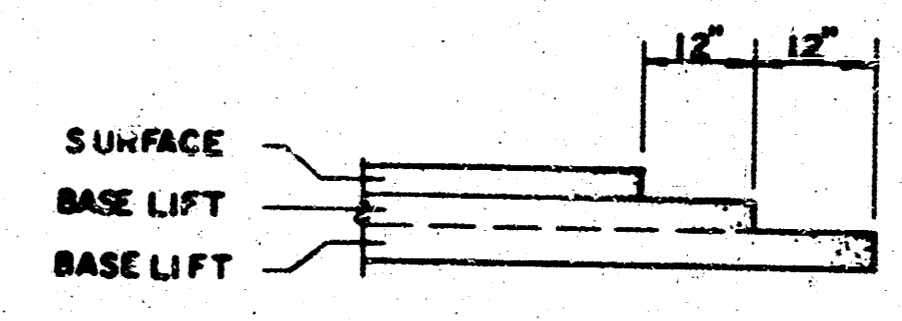
	DISTANCE FROM CENTERLINE (LT. & RT.)											
	0'	2'	4'	6'	7'	8'	10'	12'	14'	14.5'	14.67'	15.17'
A: TOP OF CURBS TO TOP OF SURFACE LIFT	0.13	0.18	0.24	0.30	0.33	0.36	0.43	0.49	—	—	—	—
B: TOP OF CURBS TO TOP OF UPPER BASE LIFT	0.30	0.25	0.41	0.47	0.50	0.53	0.60	0.66	—	—	—	—
C: TOP OF CURBS TO TOP OF LOWER BASE LIFT	0.47	0.52	0.60	0.68	0.71	0.75	0.83	0.90	0.98	1.00	1.01	—
D: TOP OF CURBS TO TOP OF SUBGRADE	0.72	0.77	0.84	0.91	0.94	0.98	1.05	1.12	1.19	1.21	1.21	1.23



### GENERAL NOTES

- 1) THE ASPHALTIC CONCRETE PAVEMENT BETWEEN THE COMBINED CURB AND GUTTER SHALL BE PAID AS SQUARE YARDS OF 7" ASPHALTIC CONCRETE (5" BITUMINOUS BASE).
- 2) THE BITUMINOUS BASE UNDER AND BEHIND THE COMBINED CURB AND GUTTER SHALL BE PAID AS SQUARE YARDS OF 2 1/2" BITUMINOUS BASE.
- 3) A TACK COAT OF EMULSIFIED ASPHALT (SC-1H OR CSS-1H) SHALL BE APPLIED AT AN APPROXIMATE RATE OF 0.05 GALLONS PER SQUARE YARD BETWEEN EACH LIFT OF ASPHALTIC MATERIAL.
- 4) BITUMINOUS BASE AND ASPHALTIC CONCRETE WEARING SURFACE SHALL BE PLACED WITH A LAYDOWN MACHINE HAVING AUTOMATIC CONTROLS FOR LINE AND GRADE.
- 5) CONSTRUCTION JOINTS IN EACH LIFT SHALL BE STAGGERED A MINIMUM DISTANCE OF ONE (1) FOOT FROM JOINTS IN PRECEDING LIFTS AND PLACED SO THAT A JOINT WILL BE CONSTRUCTED ON THE CENTERLINE OF THE TOP LIFT.
- 6) CONTRACTOR TO BID ONLY ONE SUBGRADE TREATMENT ALTERNATE WHEN ALTERNATES ARE PROVIDED IN THE PROPOSAL AND CONTRACT. THE ALTERNATE CHOSEN BY THE SUCCESSFUL BIDDER SHALL BE USED IN CONSTRUCTING THIS PROJECT.

### TRANSVERSE CONSTRUCTION JOINTS



TRANSVERSE CONSTRUCTION JOINTS SHALL BE CONSTRUCTED IN FLEXIBLE BASE PAVEMENTS AT LOCATIONS WHERE PAVEMENT JOINS EXISTING FLEXIBLE BASE PAVEMENT AS SHOWN BY THE DETAIL. ALL COSTS ASSOCIATED WITH THE CONSTRUCTION OF THE TRANSVERSE JOINT SHALL BE INCLUDED IN THE BID PRICE FOR SQUARE YARDS 7" ASPHALTIC CONCRETE (5" BITUMINOUS BASE).

**7 INCH RESIDENTIAL ASPHALTIC CONCRETE  
PAVEMENT WITH 5 INCH BITUMINOUS BASE  
CITY OF WICHITA, KANSAS**  
PROJECT NUMBER  
472-78-245-81951-000-000-001 3/11

FILMED FROM THE BEST  
AVAILABLE COPY

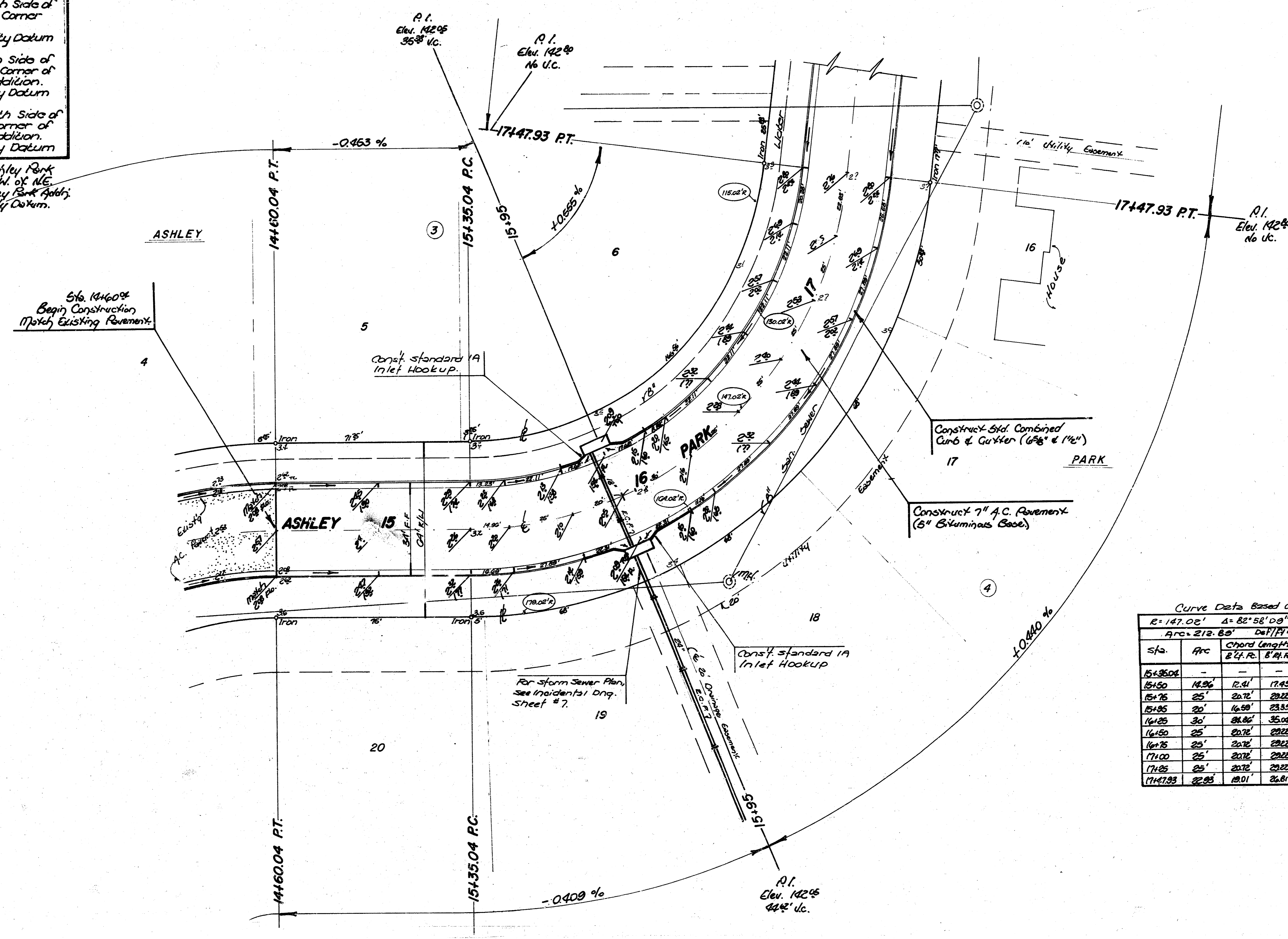
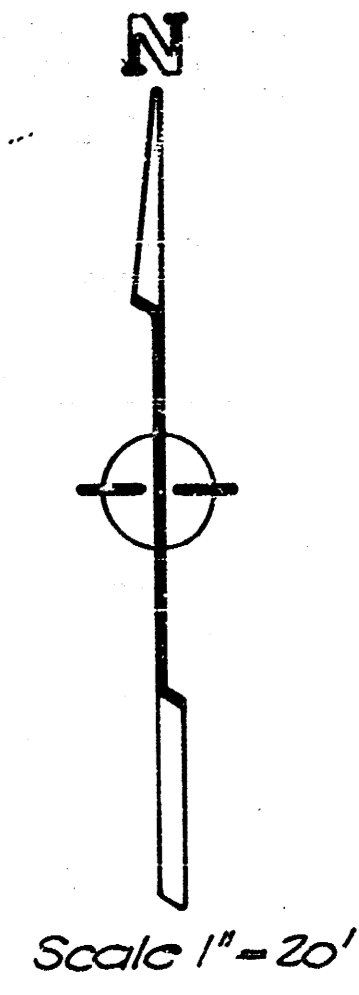
**BENCH MARKS**

Bench Mark 1 R.R. Spike in Power Pole North Side of Maple, 21' S. & 22.5' E. of SW Corner of Ashley Park Addition. City Datum Elev. 141.46

Bench Mark 2 'd' Cut in Top of Curb, South Side of Harmony St. 20' W. of N.W. Corner of Lot 10, Blk. 1, Ashley Park Addition. City Datum Elev. 141.46

Bench Mark 3 'd' Cut in Top of Curb, North Side of Douglas St. 20' W. of SW Corner of Lot 1, Blk. 3, Ashley Park Addition. City Datum Elev. 141.33

Bench Mark 4 'a' Cut Top south curb of Ashley Park Street, Approximately 23' W. of N.E. Corner Lot 20, Blk. 4, Ashley Park Addition. City Datum Elev. 142.75



Curve Data Based on  $\epsilon$

$R=147.02'$   $\Delta=82^{\circ}58'08''$   $\tan=130.00'$   
 $\text{Arc}=212.85'$   $\text{Del} \text{ Pt. } 11.69184 \text{ Mtr.}$

Sta	Arc	Chord Length B.C.P.C. B.C.P.E.	Chord	Defl.	Total Defl.
15135.04	-	-	0'00.00"	0'00.00"	0'00.00"
15150	15.0'	17.41'	17.49'	2'58.55"	2'58.55"
15175	30'	34.72'	34.92'	5'57.10"	7'47.12"
15195	45'	52.03'	52.22'	8'55.65"	11'41.08"
16125	30'	34.72'	35.04'	5'59.05"	17'41.48"
16150	15.0'	17.41'	17.49'	2'58.55"	27'18.28"
16175	30'	34.72'	34.92'	5'57.10"	32'08.41"
17100	25'	29.17'	29.22'	4'52.18"	37'00.59"
17125	25'	29.17'	29.22'	4'52.18"	41'29.05"
17447.93	32.85'	36.81'	36.81'	4'28.10"	41'29.05"

**EARTHWORK QUANTITY TOTALS**

EXCAVATION = 456.6 C.Y.	COMPACTED FILL = 492.7 C.Y.	BORROW = 1692.4 C.Y.
+ 10% = 45.7 C.Y.	+ 10% = 49.3 C.Y.	+ 10% = 169.2 C.Y.
<b>TOTAL = 502.3 C.Y.</b>	<b>TOTAL = 542.0 C.Y.</b>	<b>TOTAL = 1861.6 C.Y.</b>

SUBGRADE MANIPULATION = 4159 S.Y.

**ASHLEY PARK**  
W. L. LOT 20 TO N. L. LOT 12, BLK. 4

**BAUGHMAN COMPANY P. A.**  
SURVEYING & ENGINEERING  
316/282-7271 • 315 ELLIS • WICHITA, KANSAS 67211

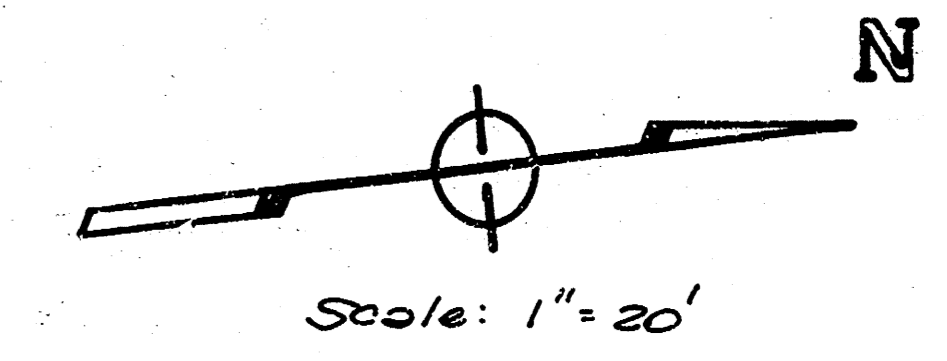
PROJECT NUMBER  
**472-76-245-81951-000-001**

DESIGN: NBW, DRAWN: NBW, APPROVED: [Signature], DATE: 5/16/09, SCALE: 20, SHEET: 4 OF 11

**FILMED FROM THE BEST AVAILABLE COPY**

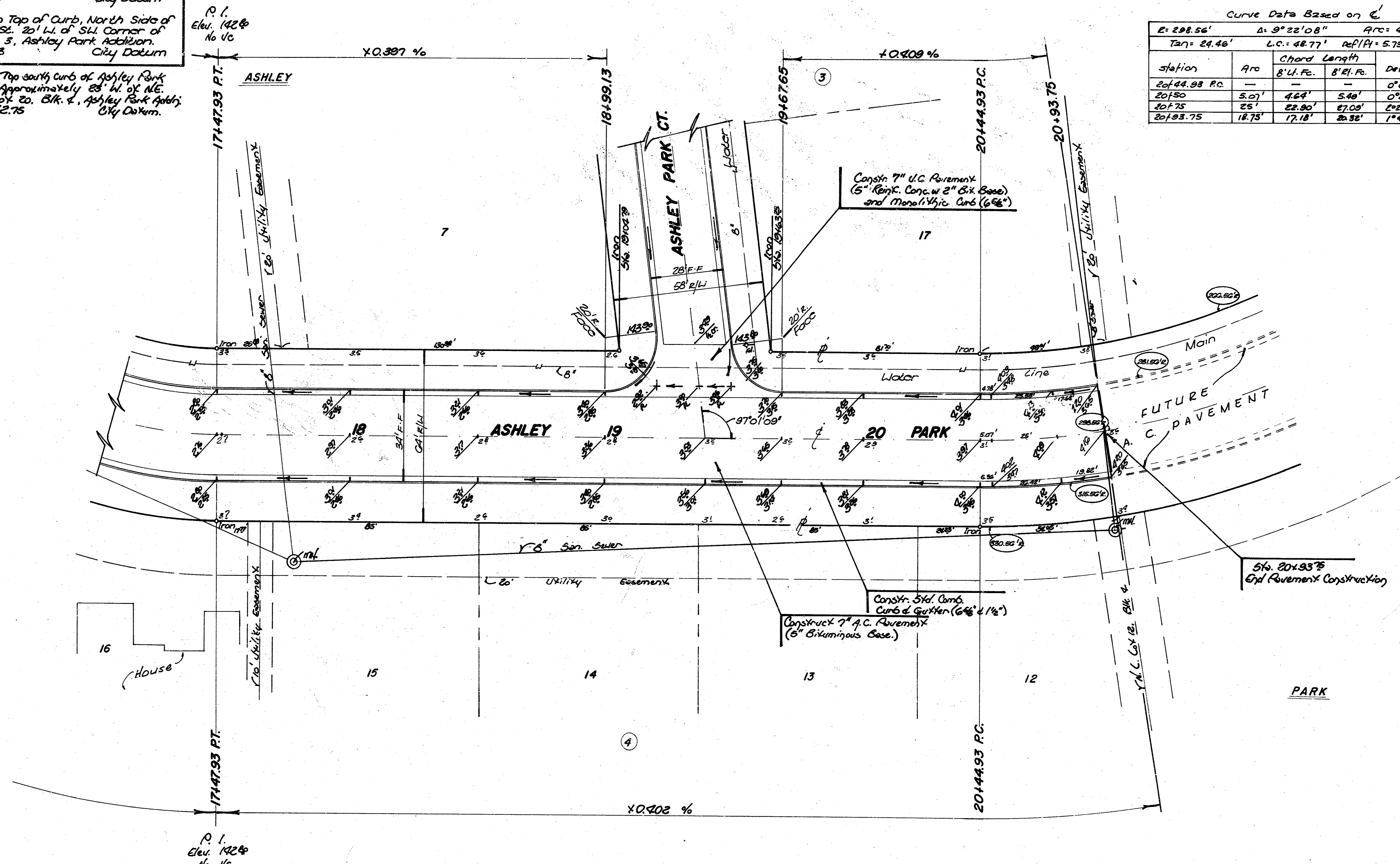
**BENCH MARKS**

- Bench Mark 1 R.R. Spike in Power Pole North Side of Maple, 21' S. & 66' E. of SW Corner of Ashley Park Addition. Elev. 141.46 City Datum
- Bench Mark 2 'u' Cut in Top of Curb, South Side of Harmony St., 70' W. of NW Corner of Lot 10, Blk. 1, Ashley Park Addition. Elev. 141.46 City Datum
- Bench Mark 3 'u' Cut in Top of Curb, North Side of Douglas St., 20' W. of SW Corner of Lot 1, Blk. 3, Ashley Park Addition. Elev. 141.33 City Datum
- Bench Mark 4 'u' Cut Top south Curb of Ashley Park Street, Approximately 88' W. of NE Corner Lot 20, Blk. 4, Ashley Park Addition. Elev. 142.75 City Datum.



Curve Data Based on  $\epsilon$

$E = 208.56'$	$\Delta = 9^\circ 22' 08''$	$ARC = 48.82'$		
$Tan = 24.46'$	$L.C. = 48.77'$	$REF/PT = 5.75742 Min.$		
Station	Arc	Chord Length	Defl.	Total Defl.
		B' U. FC.	B' ET. FC.	
20+44.93 P.C.	—	—	—	0° 00' 00"
20+50	5.07'	4.64'	5.46'	0° 29' 11"
20+75	25	22.90'	27.09'	2° 53' 56"
20+93.75	18.75'	17.18'	22.32'	4° 41' 04"



<b>ASHLEY PARK</b>				
W. L. LOT 20, TO N. L. LOT 12, BLK. 4				
<b>BAUGHMAN COMPANY P. A.</b>				REV.
SURVEYING & ENGINEERING				
316/292-7271 • 315 ELLIS • WICHITA, KANSAS 67211				
PROJECT NUMBER				SHEET
472-78-245-81951-000-001				5
DESIGN	DRAWN	APPROVED	DATE	SCALE
AMB.	AMB.	J.M.	5/89	20
				OF
				11

**FILMED FROM THE BEST AVAILABLE COPY**

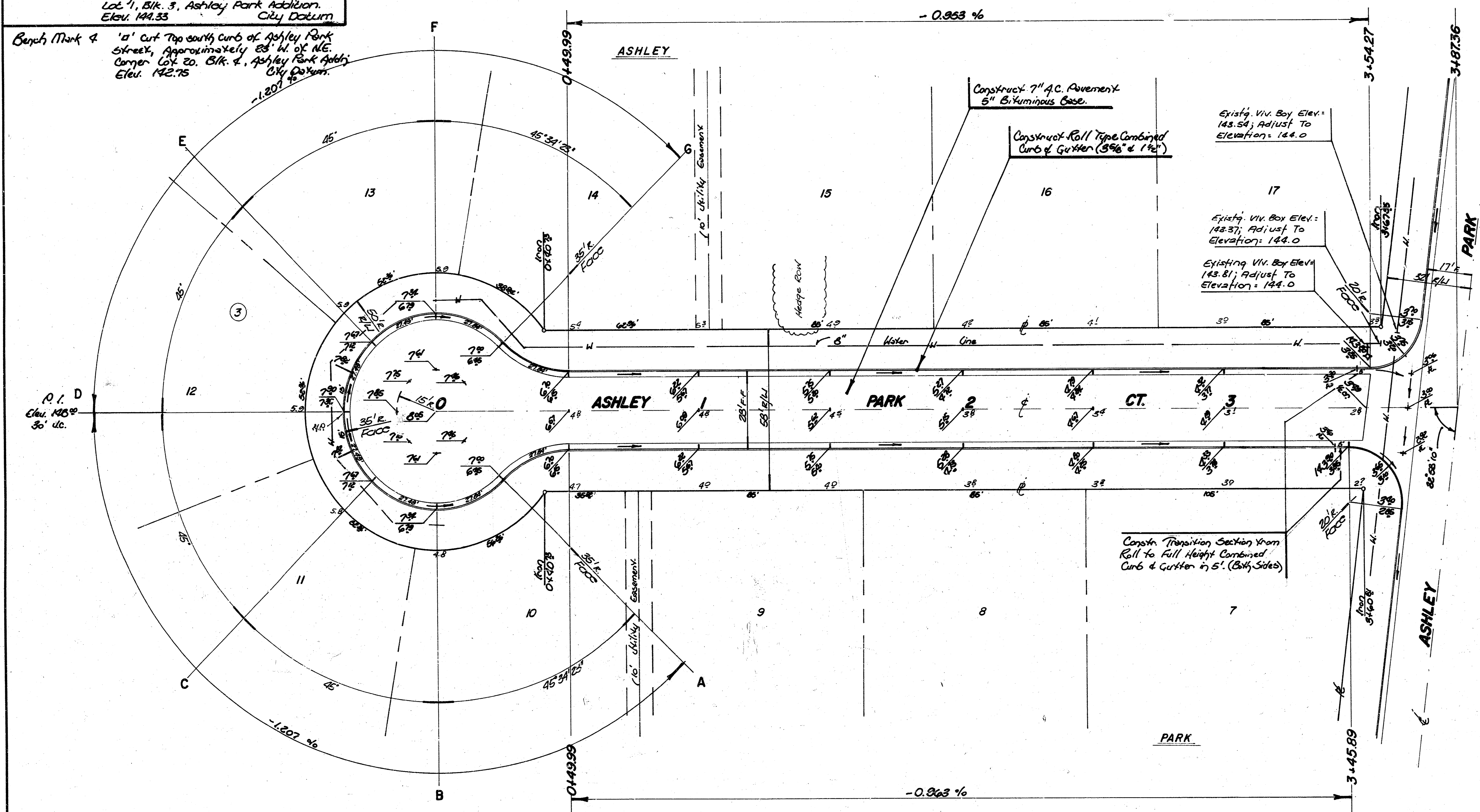
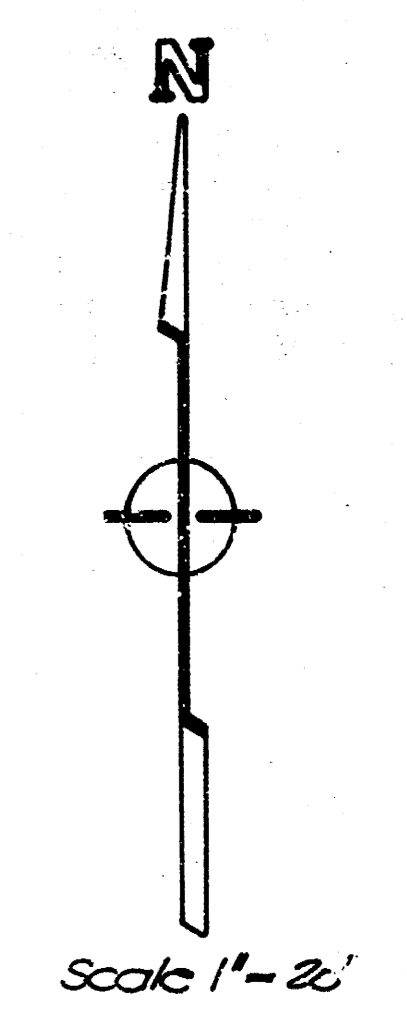
**BENCH MARKS**

Bench Mark 1 R.R. Spike in Power Pole North Side of Maple, 21' S. & 66.5' E. of S.W. Corner of Ashley Park Addition. Elev. 141.46 City Datum

Bench Mark 2 'a' Cut in Top of Curb, South Side of Harmony St. 20' W. of N.W. Corner of Lot 10, Blk. 1, Ashley Park Addition. Elev. 141.46 City Datum

Bench Mark 3 'a' Cut in Top of Curb, North Side of Douglas St. 20' W. of S.W. Corner of Lot 1, Blk. 3, Ashley Park Addition. Elev. 141.33 City Datum

Bench Mark 4 'a' Cut Top south curb of Ashley Park Street, approximately 83' W. of N.E. Corner Lot 20, Blk. 4, Ashley Park Addition. Elev. 142.75 City Datum



Valve Box Adjustment Table

Sta.	Loc.	Exist. Elev.	New Elev.
5154.3	23' Lt.	143.81	144.0
3108.0	23' Lt.	143.37	144.0
3773.5	23' Lt.	143.54	144.0

Note: Transition sections of Combined Curb & Gutter shall be paid for as Roll Type Combined Curb & Gutter.

**ASHLEY PARK CT.**  
TO SERVE LOTS 7 - 17, BLOCK 3

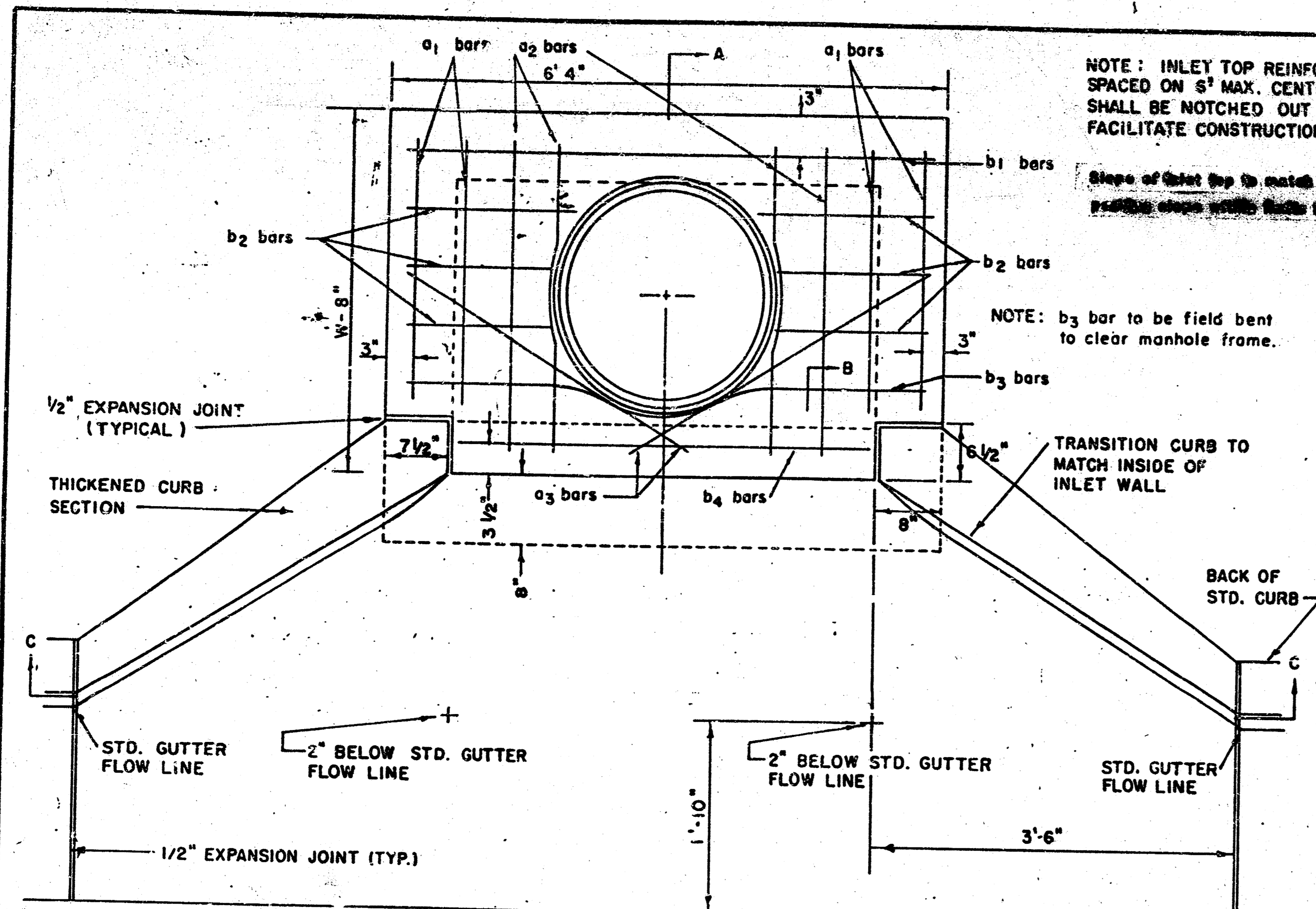
**BAUGHMAN COMPANY P. A.**  
SURVEYING & ENGINEERING  
316/282-7271 • 315 ELLIS • WICHITA, KANSAS 67211

PROJECT NUMBER  
**472-78-245-81951-000-000-001**

DESIGN: NEW, DRAWN: M.B.H., APPROVED: J.M., DATE: 5/09, SCALE: 20, SHEET: 6 OF 11

FILMED FROM THE BEST AVAILABLE COPY





NOTE: EXPANSION JOINT ONLY IN CURB AREA WITH CONC. PAVEMENT.

PLAN

NOTE: INLET TOP REINFORCING SHALL BE SPACED ON 6" MAX. CENTERS. INLET LIDS SHALL BE NOTCHED OUT AS INDICATED TO FACILITATE CONSTRUCTION OF CURB.

Slope of Inlet Top to match adjacent or existing curb with 1/4" per foot.

NOTE: b3 bar to be field bent to clear manhole frame.

TRANSITION CURB TO MATCH INSIDE OF INLET WALL

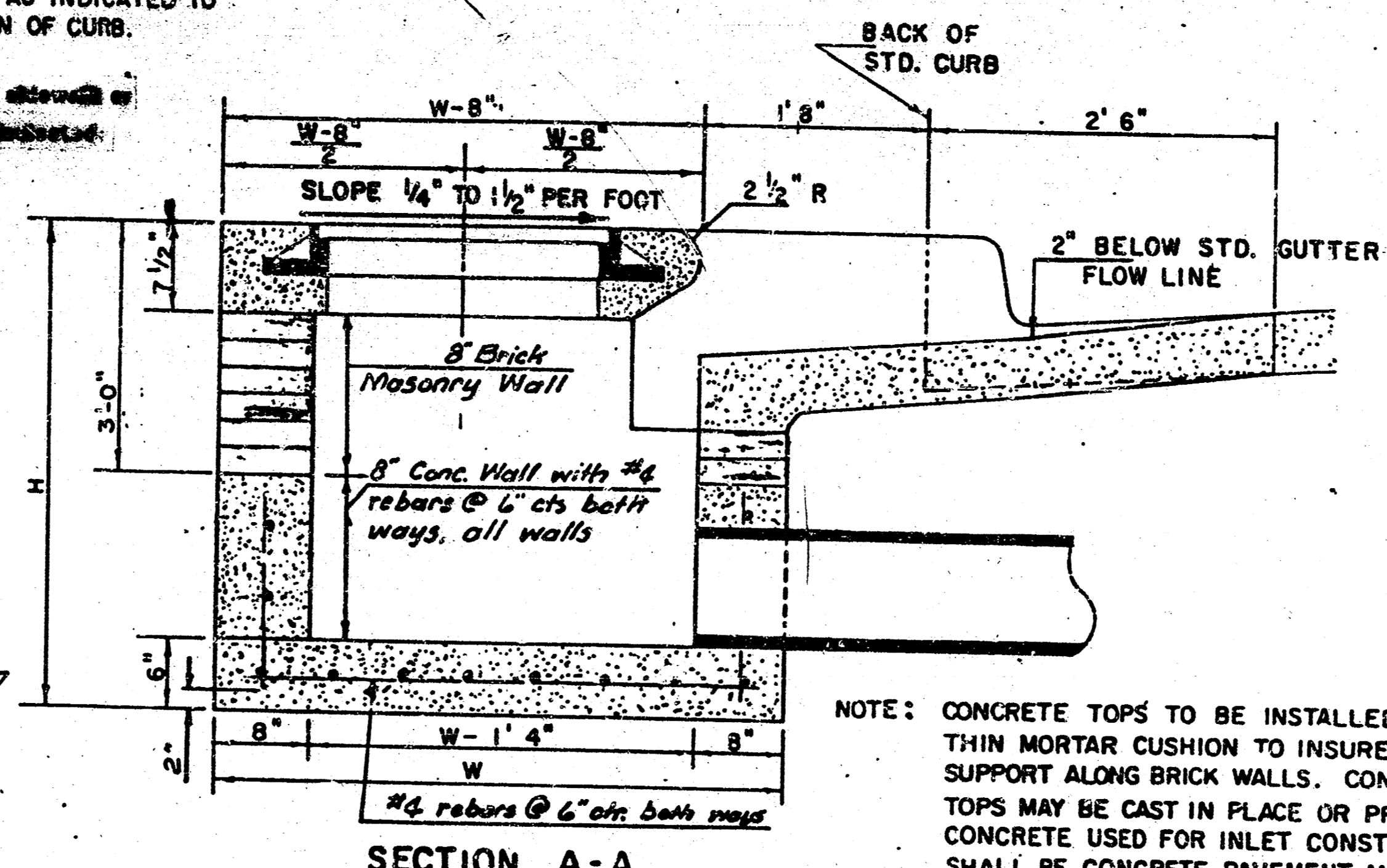
BACK OF STD. CURB

STD. GUTTER FLOW LINE

2" BELOW STD. GUTTER FLOW LINE

1/2" EXPANSION JOINT (TYP.)

1/2" R



SECTION A-A

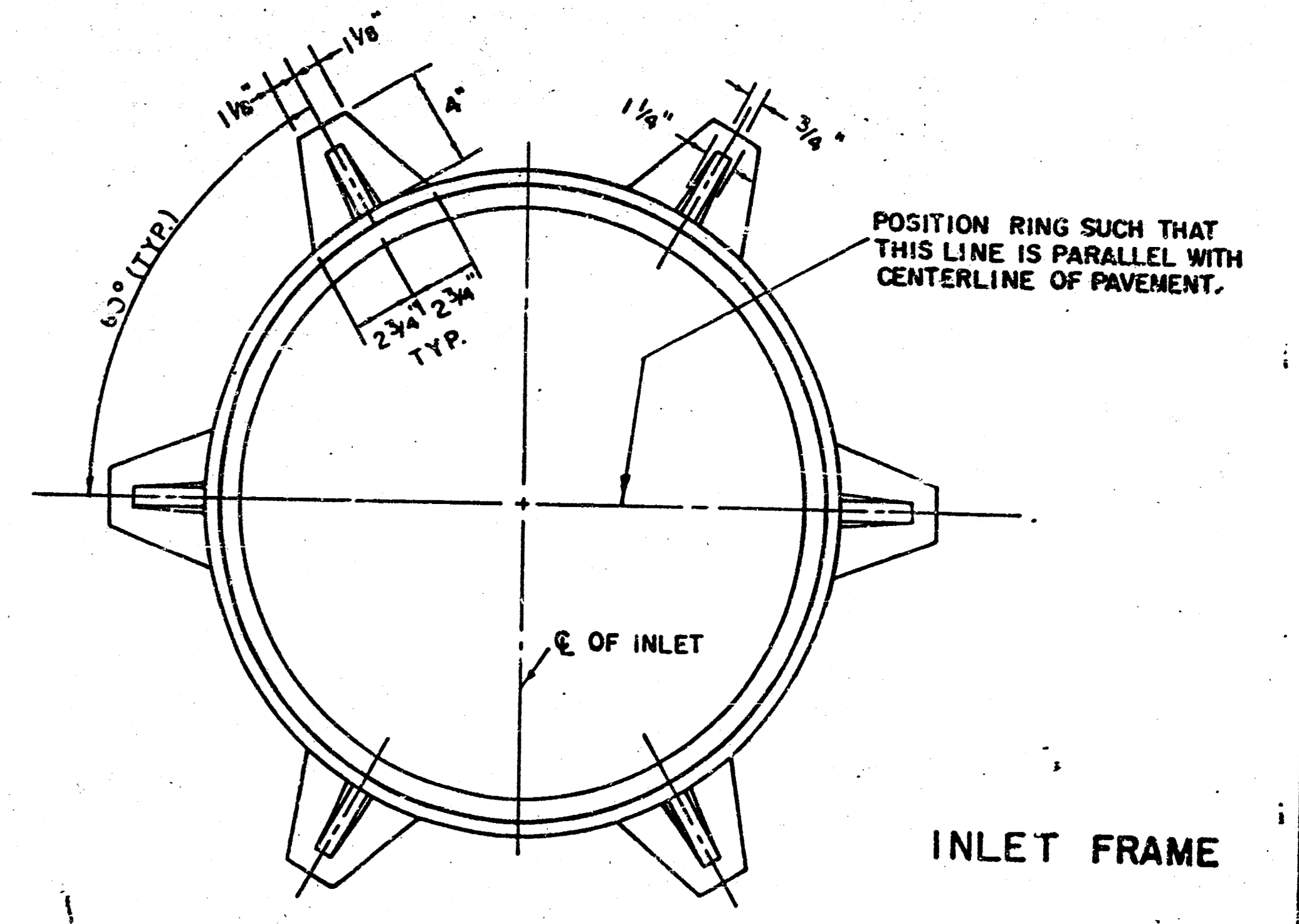
NOTE: CONCRETE TOPS TO BE INSTALLED ON THIN MORTAR CUSHION TO INSURE FULL SUPPORT ALONG BRICK WALLS. CONCRETE TOPS MAY BE CAST IN PLACE OR PRECAST. CONCRETE USED FOR INLET CONSTRUCTION SHALL BE CONCRETE PAVEMENT MIX WITH AIR ENTRAINMENT.

NOTE: CONTRACTOR SHALL HAVE THE OPTION OF CONSTRUCTING 8" BRICK MASONRY WALLS BETWEEN THE CONCRETE INLET BASE AND TOP ON THIS INLET WHEN W = 6'-4" AND H = 7'-0" OR LESS.

ADDITIONAL CURB AND GUTTER CONSTRUCTION NECESSARY TO CONNECT SET-BACK INLET TO PAVEMENT WILL BE PAID FOR AT THE UNIT PRICE BID FOR EACH INLET HOOKUP.

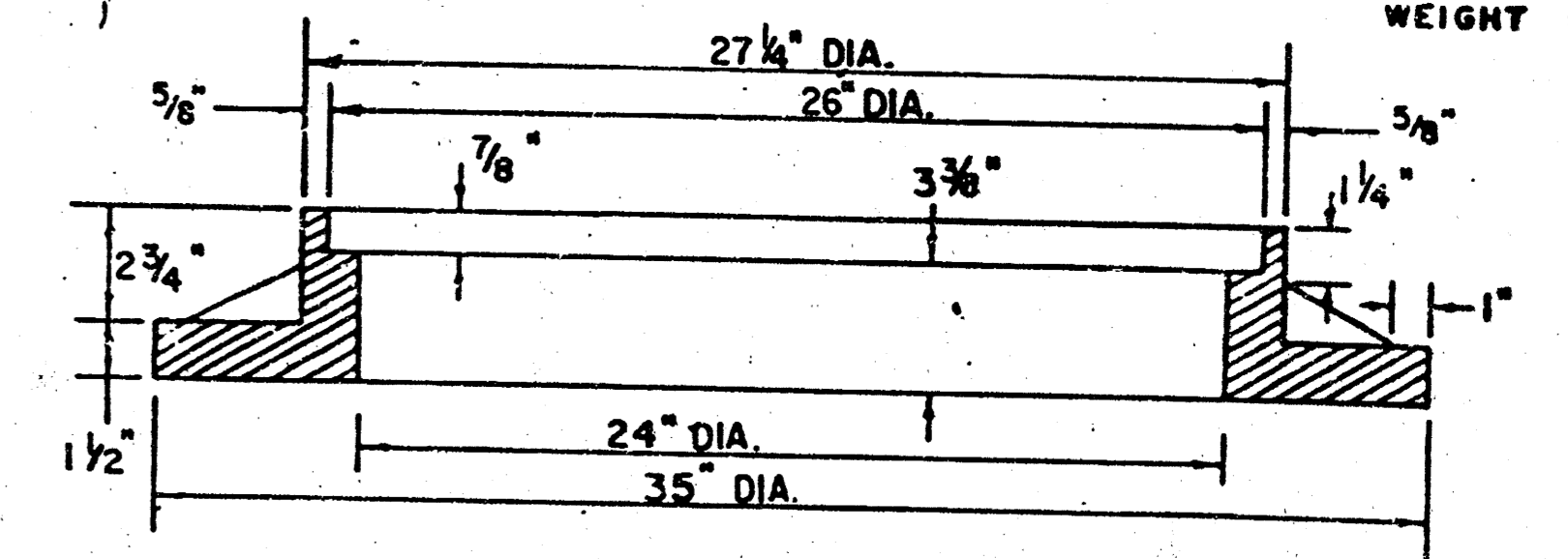
INLET INVERT SHALL BE SHAPED WITH 8 SACK SAND MIX CONCRETE TO CREATE FLOW CHANNELS AND TO INCREASE HYDRAULIC EFFICIENCY SUCH THAT THE INLET WILL BE SELF-CLEANING BETWEEN ALL INLET AND/OR OUTLET PIPES.

THE ENDS OF ALL PIPES INSTALLED IN INLETS SHALL BE CUT OFF FLUSH WITH THE INSIDE FACE OF THE INLET WALL.



INLET FRAME

WEIGHT = 180 LBS.



SEE CITY OF WICHITA STANDARD MANHOLE FRAME AND COVER DETAIL SHEET FOR COVER DETAILS TO BE USED WITH INLET FRAME.

STEEL SCHEDULE

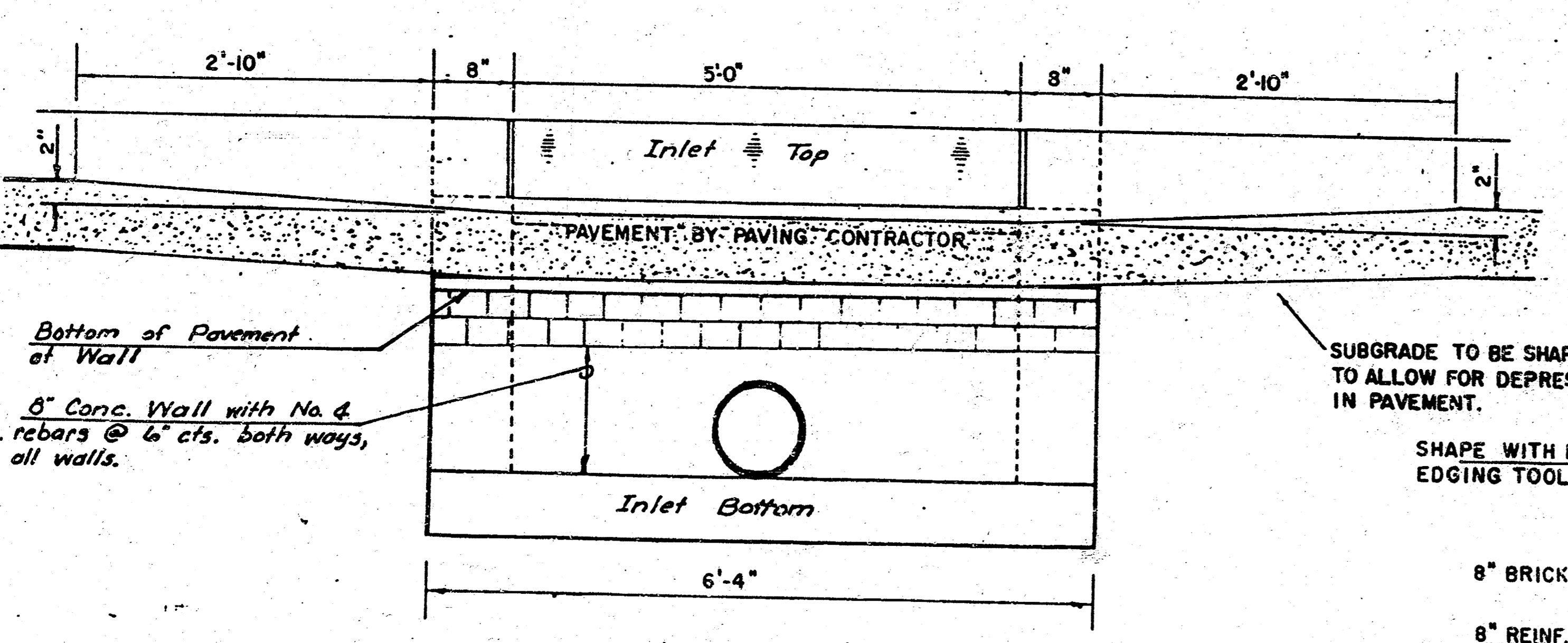
BAR	a1	a2	a3	b1	b2	b3	b4	WT. LBS.
NUMBER	4	4	2	1 3 5 7 9	6	1	1	
SIZE	#4	#4	#4	#4 #4 #4 #4 #4	#4	#4	#6	
LENGTH	W-4'4"	5'7"	6'7"	4'0" 6'1" - - - - -	1'9"	6'2"	4'8"	60 ±
	W-5'4"	7'7"	8'7"	5'0" - 6'1" - - - - -	1'9"	6'2"	4'8"	81 ±
	W-6'4"	9'7"	10'7"	6'0" - - - 6'1" - - - - -	1'9"	6'2"	4'8"	101 ±
	W-7'4"	11'7"	12'7"	7'0" - - - - - 6'1" - - - - -	1'9"	6'2"	4'8"	121 ±
	W-8'4"	13'7"	14'7"	8'0" - - - - - - - 6'1" - - - - -	1'9"	6'2"	4'8"	141 ±

NOTE: a3 BARS TO BE PLACED APPROX. 2" BELOW TOP OF INLET COVER

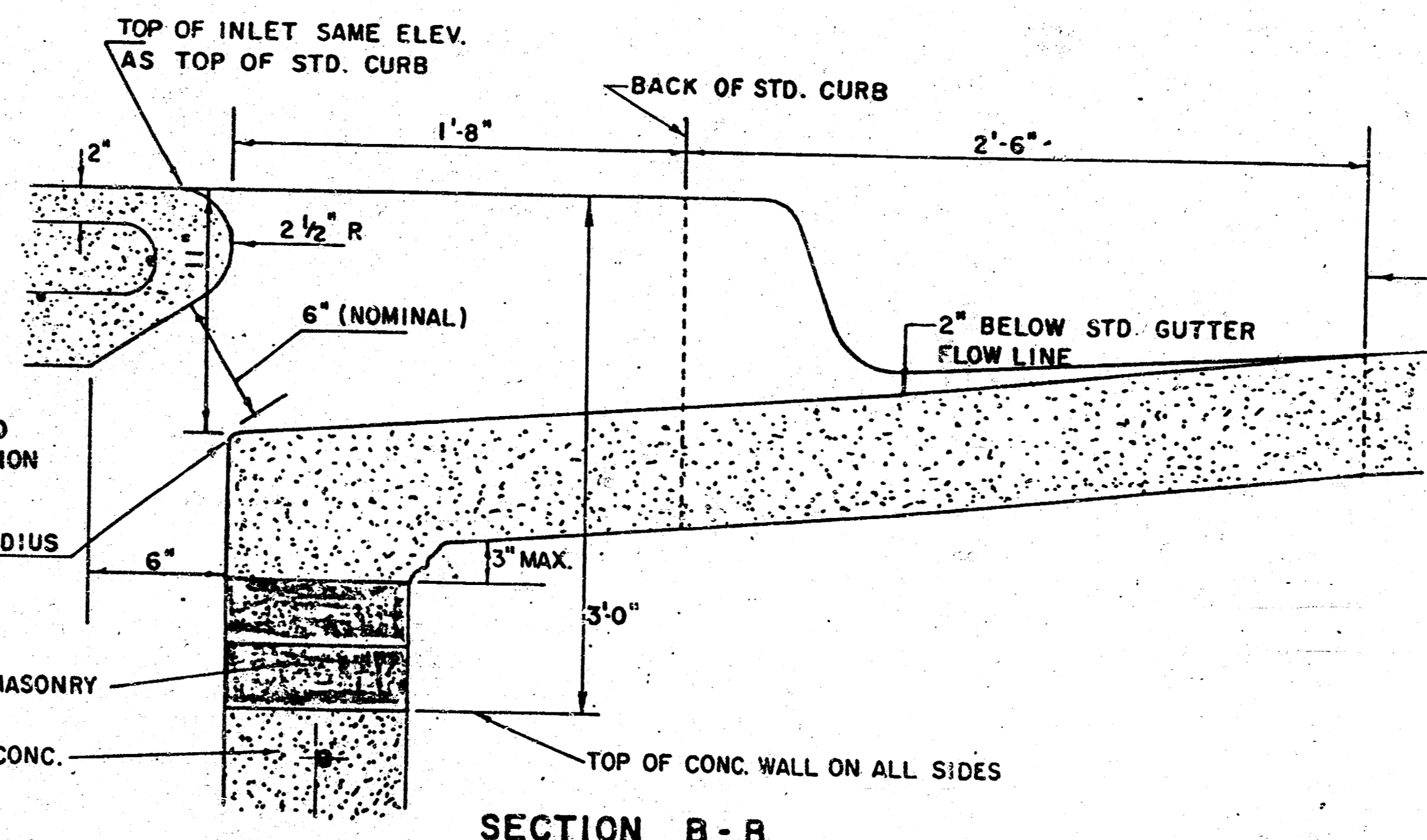
BENDING DIAGRAM

STANDARD CURB INLET PRECAST TOPS

W	PRE-CAST TOP SIZE	PIPE SIZE	CU. YD. CONC.
4' 4"	3'8" x 6'4" x 7 1/2"	21" & SMALLER	0.38 ±
5' 4"	4'8" x 6'4" x 7 1/2"	24" & 30"	0.51 ±
6' 4"	5'8" x 6'4" x 7 1/2"	36" & 42"	0.64 ±
7' 4"	6'8" x 6'4" x 7 1/2"	48" & 54"	0.77 ±
8' 4"	7'8" x 6'4" x 7 1/2"	60" & 66"	0.90 ±



SECTION C-C



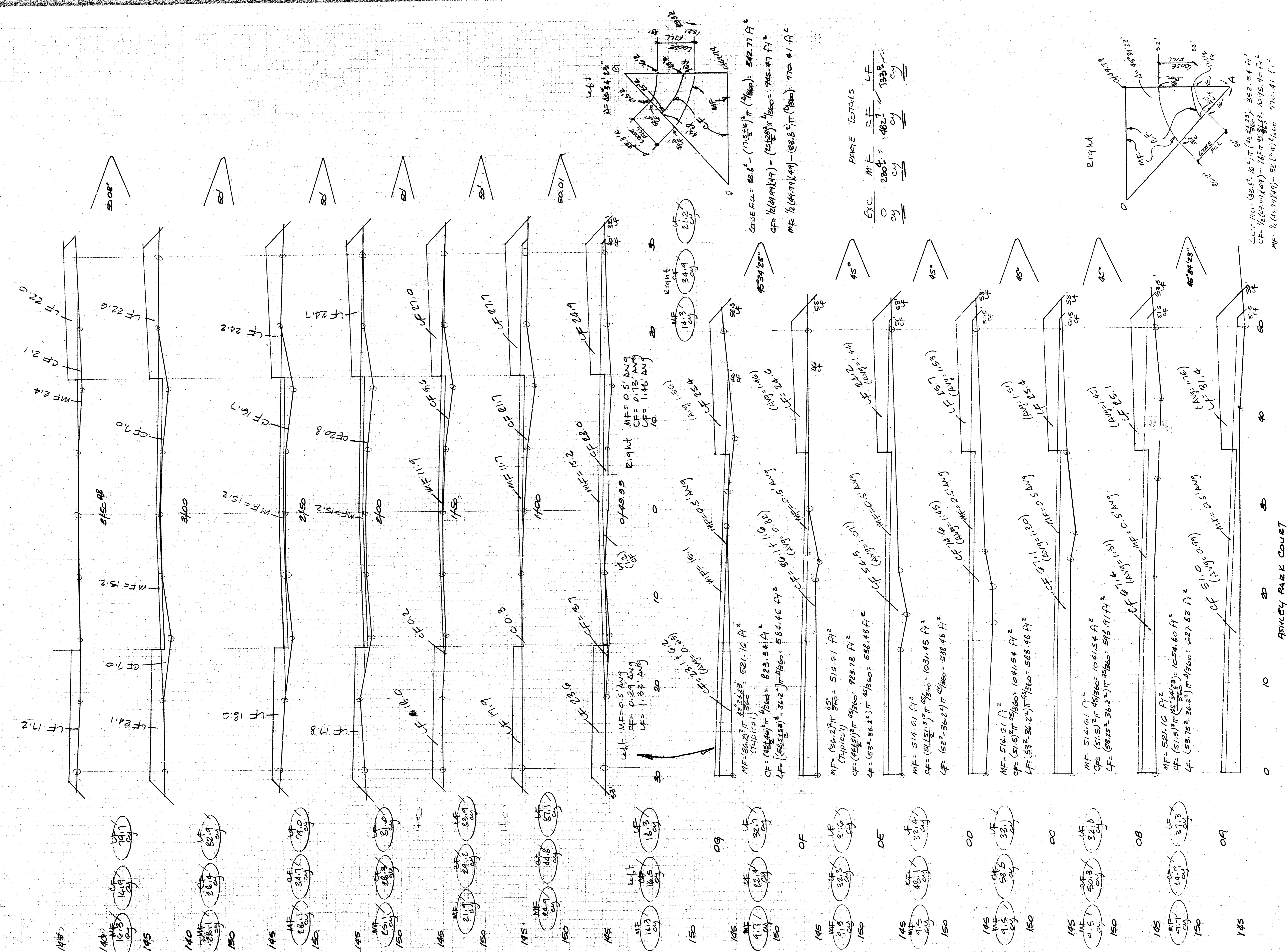
SECTION B-B

REVISED 11-30-1988  
REVISED 12-21-1984

DETAIL STANDARD TYPE IA CURB INLET  
CITY OF WICHITA, KANSAS  
INLET OPENING = 6" x 5' 0"  
472-78-245-81951-000-000-001  
JUNE 1984

FILMED FROM THE BEST AVAILABLE COPY





PAGE TOTALS  
 EYC MF CF LF  
 0 230.5 482.1 133.0

WLT MF = 453.12 ft²  
 CF = 453.12 ft  
 WF = 453.12 ft

WLT MF = 453.12 ft²  
 CF = 453.12 ft  
 WF = 453.12 ft

472-76-246-81

FILMED FROM THE BEST AVAILABLE COPY

