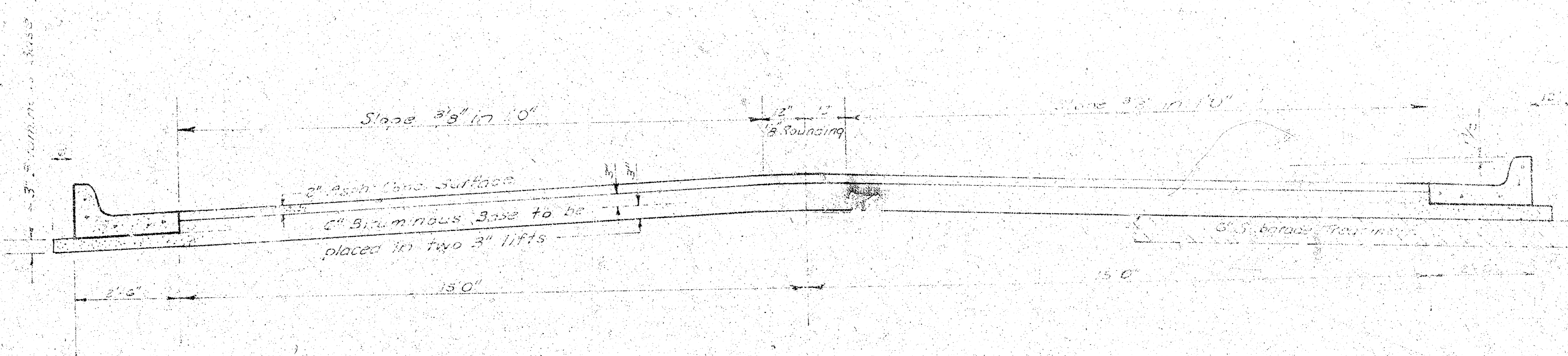


**BARRON**  
 S. L. DOS RIOS TO W. L. LAUREL  
 QUAIL MEADOWS, 3rd ADDITION



**TYPICAL SECTION**

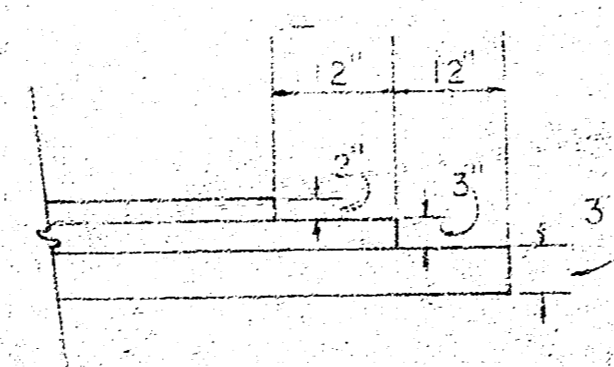
**35' ASPHALTIC CONCRETE PAVEMENT WITH BITUMINOUS BASE**

*The A.C. Pavement between the curbs and the gutter shall be paid as 35.00' of pavement. The Bituminous Base under the curb and gutter shall be paid as 35.00' of Bituminous Base.*

A TACK COAT OF EMULSIFIED ASPHALT (SS-1H) SHALL BE APPLIED AT AN APPROXIMATE RATE 0.05 GALLONS PER SQ YD BETWEEN LIFTS OF ASPHALTIC MATERIALS WHEN ORDERED BY THE ENGINEER. TACK COAT WILL NOT BE PAID FOR DIRECTLY AND SHALL BE CONSIDERED AS SUBSIDIARY TO PRICE BID FOR ASPHALTIC PAVEMENT.

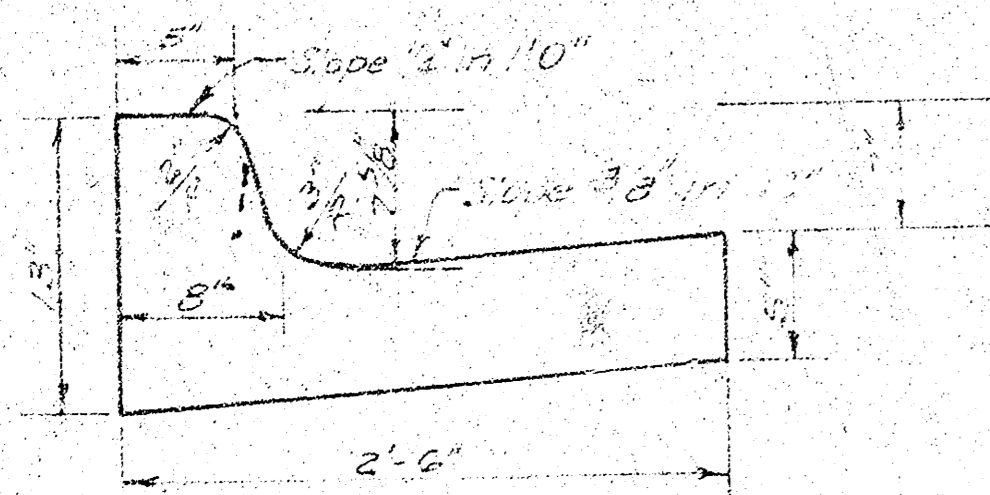
BITUMINOUS BASE AND ASPHALTIC CONCRETE WEARING SURFACE SHALL BE PLACED WITH A LAYDOWN MACHINE HAVING AUTOMATIC ELECTRONIC CONTROLS FOR CROWN AND GRADE. CONSTRUCTION JOINTS IN EACH LIFT SHALL BE STAGGERED A MINIMUM DISTANCE OF 1' WITH JOINTS IN PRECEDING LIFTS AND PLACED SUCH THAT A JOINT WILL BE CONSTRUCTED ON THE CENTERLINE IN THE TOP LIFT.

**DETAIL OF TRANSVERSE CONSTRUCTION JOINTS**

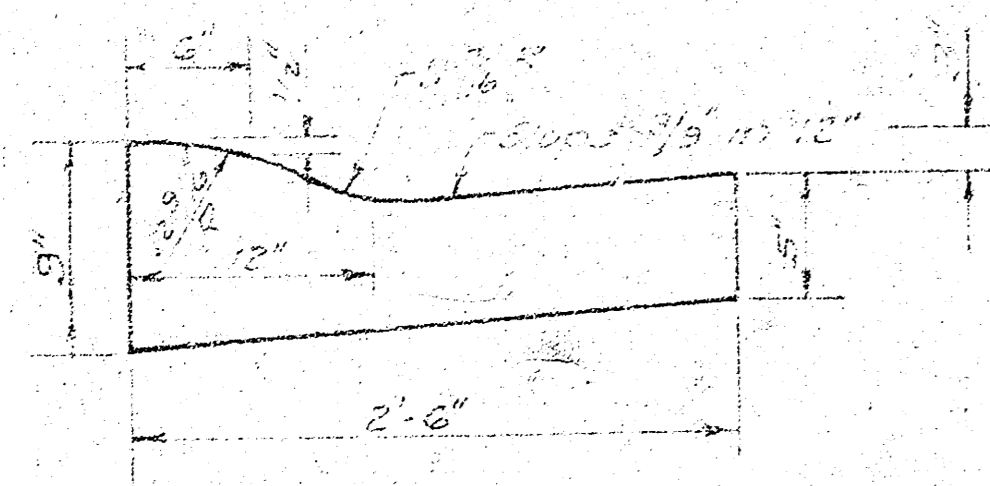


TRANSVERSE CONSTRUCTION JOINTS SHALL BE CONSTRUCTED IN FLEXIBLE BASE PAVEMENTS AT LOCATIONS WHERE PAVEMENT TEMPORARILY ENDS TO FACILITATE FUTURE PAVEMENT CONSTRUCTION AS SHOWN BY DETAIL. THE COST OF CONSTRUCTING THE TRANSVERSE CONSTRUCTION JOINTS SHALL NOT BE MEASURED OR PAID FOR DIRECTLY BUT SHALL BE INCLUDED IN THE BID PRICE FOR SQUARE YARDS OF ASPHALTIC CONCRETE PAVEMENT.

**COMBINED CURB & GUTTER**



**ROLL TYPE CURB & GUTTER**



**CITY OF WICHITA KANSAS**

DEPARTMENT of PUBLIC WORKS - Engineering  
 Division

R. W. LINN

CITY ENGINEER

DATE

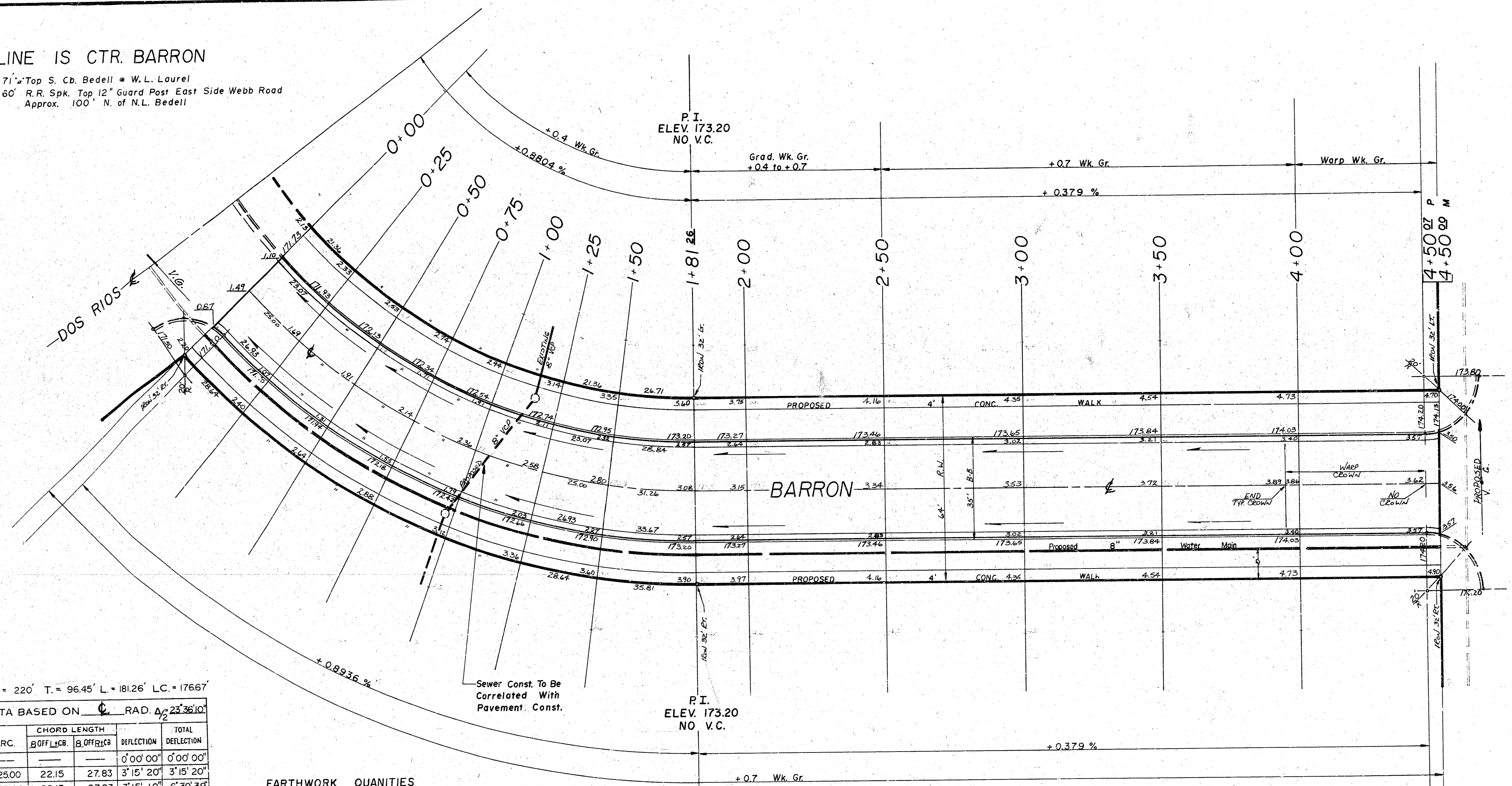
Proj. No. **DAKS 574090**

1/2

**BASELINE IS CTR. BARRON**

B.M. 177.71 Top S. Cb. Bedell = W.L. Laurel  
 B.M. 184.60 R.R. Spk. Top 12" Guard Post East Side Webb Road  
 Approx. 100' N. of N.L. Bedell

SCALE  
 1" = 20'



$\Delta = 47.1220R = 220'$  T = 96.45' L = 181.26' LC = 17667'  
 CURVE DATA BASED ON C. RAD.  $\Delta = 2336.10'$

STA.	ARC.	CHORD LENGTH		DEFLECTION	TOTAL DEFLECTION
		B OFF LCB	B OFF RCB		
0+00	—	—	—	0°00'00"	0°00'00"
0+25	25.00	22.15	27.83	3°15'20"	3°15'20"
0+50	25.00	22.15	27.83	3°15'19"	6°30'39"
0+75	25.00	22.15	27.83	3°15'20"	9°45'59"
1+00	25.00	22.15	27.83	3°15'19"	13°01'18"
1+25	25.00	22.15	27.83	3°15'20"	16°16'38"
1+50	25.00	22.15	27.83	3°15'20"	19°31'58"
1+75	25.00	22.15	27.83	3°15'19"	22°47'17"
1+81.26	6.26	5.54	6.37	0°48'53"	23°36'10"

DEFL./FT. = 7.8130609 MIN.

**EARTHWORK QUANTITIES**

EXC.	COMP. FILL
1063.2 C.Y.	7.0 C.Y.
106.3 +10%	.7 +10%
1169.5 C.Y.	7.7 C.Y.

1885% N.Y. 59.8 M.

CONSTRUCTION TO ALLOW FOR 6-20' CONC. DRIVEWAYS

**SUB-GRADE**  
 TYPE OF SUB-GRADE TREATMENT SHALL BE DETERMINED BY THE FIELD ENGINEER. SUB-GRADE TREATMENT MAY CONSIST OF LIME TREATMENT, CEMENT TREATMENT, SUB-GRADE MODIFICATION, OR ANY COMBINATION OF THESE.

**NOTE TO FIELD ENGINEER & CONTRACTOR**  
 Grade staking and clear right-of-way for proposed sidewalk. Compact fill in sidewalk area. TO BE CONSTRUCTED BY "OTHERS".

**BARRON**  
 S.L. DOS RIOS TO W.L. LAUREL  
 ASPHALTIC CONCRETE PAVEMENT  
 35' B-B WITH COMB. CB. & GTR.  
 CITY OF WICHITA, KANSAS  
 R. W. LINN — CITY ENGINEER  
 PROJECT NO. DAKS 574090  
 DATE: 2/12

Survey KRUG Bk. DLK 92  
 Plan WOOTEN  
 Calc. WOOTEN  
 Checked