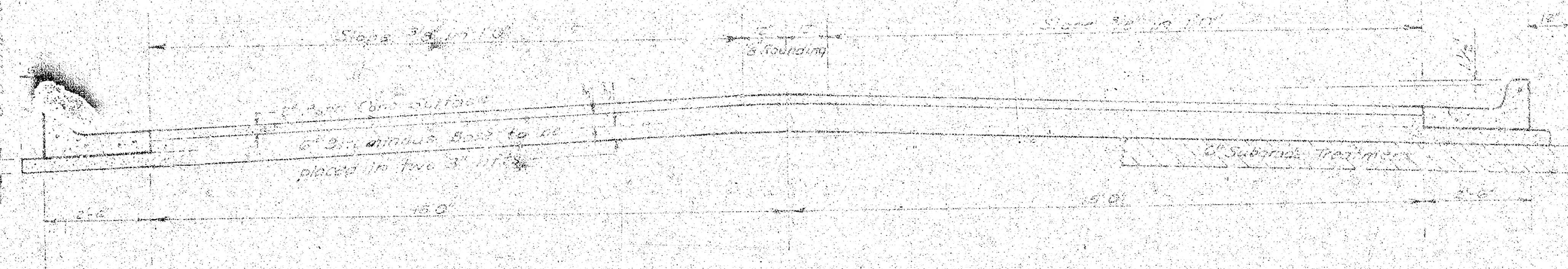


BARRON CIRCLE
E. L. LAUREL TO & INCL. CUL-DE-SAC



TYPICAL SECTION

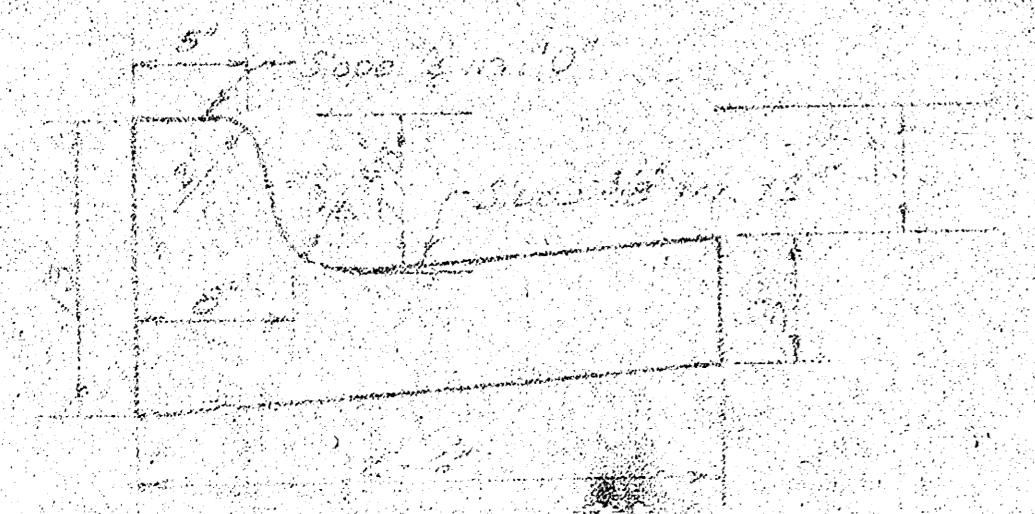
35' ASPHALTIC CONCRETE PAVEMENT WITH BITUMINOUS BASE

A TACK COAT OF EMULSIFIED ASPHALT (SS-1H) SHALL BE APPLIED AT AN APPROXIMATE RATE 0.05 GALLONS PER SQ YD. BETWEEN LIFTS OF ASPHALTIC MATERIALS WHEN ORDERED BY THE ENGINEER. TACK COAT WILL NOT BE PAID FOR DIRECTLY AND SHALL BE CONSIDERED AS SUBSIDIARY TO PRICE BID FOR ASPHALTIC PAVEMENT.

BITUMINOUS BASE AND ASPHALTIC CONCRETE WEARING SURFACE SHALL BE PLACED WITH A LAYDOWN MACHINE HAVING AUTOMATIC ELECTRONIC CONTROLS FOR CROWN AND GRADE. CONSTRUCTION JOINTS IN EACH LIFT SHALL BE STAGGERED A MINIMUM DISTANCE OF 1' WITH JOINTS IN PRECEDING LIFTS AND PLACED SUCH THAT A JOINT WILL BE CONSTRUCTED ON THE CENTERLINE IN THE TOP LIFT.

*The A.C. Pavement between the curb and gutter shall be paid as sq. yds. of A.C. Pavement (of 35' width).
The Bituminous Base under the Curb and Gutter shall be paid as sq. yds. of Bituminous Base.*

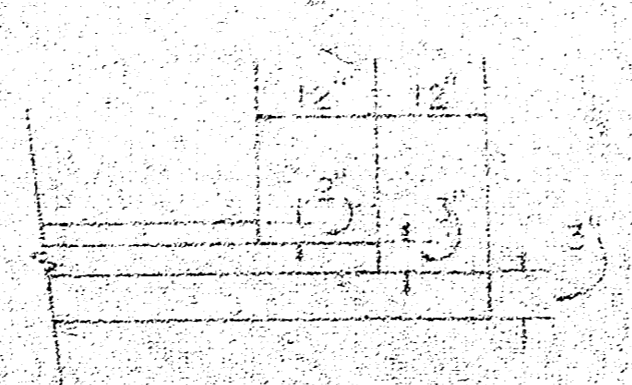
COMBINED CURB & GUTTER



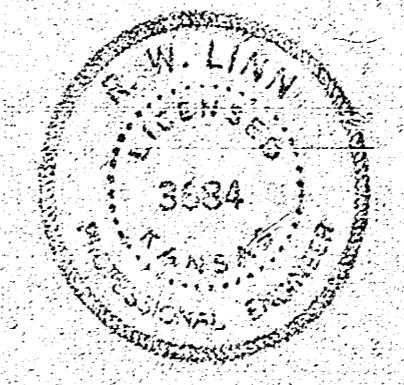
ROLL TYPE CURB & GUTTER



DETAIL OF TRANSVERSE CONSTRUCTION JOINTS



TRANSVERSE CONSTRUCTION JOINTS SHALL BE CONSTRUCTED IN FLEXIBLE BASE PAVEMENTS AT LOCATIONS WHERE PAVEMENT TEMPORARILY ENDS TO FACILITATE FUTURE PAVEMENT CONSTRUCTION AS SHOWN BY DETAIL. THE COST OF CONSTRUCTING THE TRANSVERSE CONSTRUCTION JOINTS SHALL NOT BE MEASURED OR PAID FOR DIRECTLY BUT SHALL BE INCLUDED IN THE BID PRICE FOR SQUARE YARDS OF ASPHALTIC CONCRETE PAVEMENT.



CITY OF WICHITA KANSAS

DEPARTMENT of PUBLIC WORKS - Engineering Division

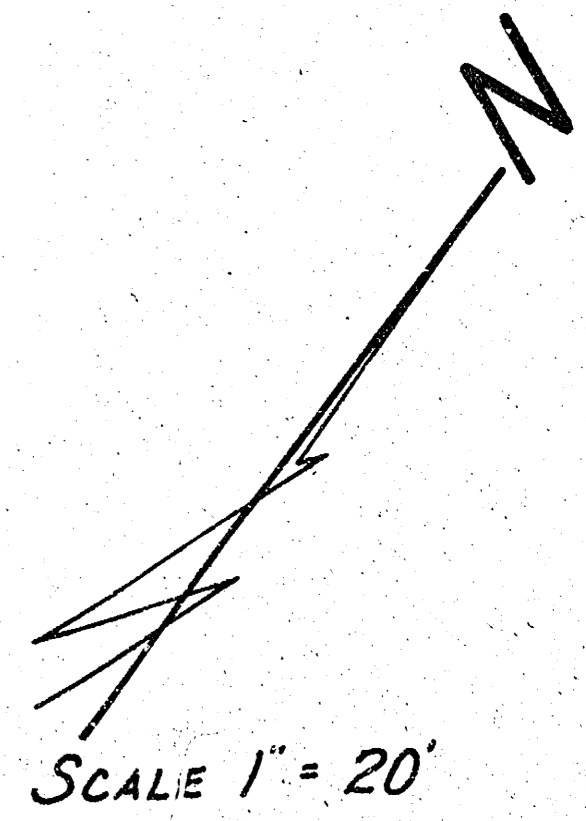
R. W. LINN CITY ENGINEER

DATE _____ Proj. No. DAKS 574096

(1/2)

BASELINE IS CTR. OF BARRON CIRCLE

574
 B.M. 162.42 R.R.'S-FACE P.P. N-SIDE LINCOLN 100' E OF LAUREL.



Δ = 46°12' E. = 814' T. = 119' L. = 237' L.C. = 236.22
 CURVE DATA BASED ON R.A.D. LY. 8'20" 32"

STA.	AEC	CHORD LENGTH	DEFLECTION	TOTAL DEFLECTION
		CHORD LENGTH	DEFLECTION	DEFLECTION
0+36.24			0°00'00"	0°00'00"
0+50	13.24	13.65	12.83	0°27'57"
0+75	23.00	25.77	24.23	0°52'48"
1+00	23.00	25.77	24.23	1°18'20"
1+25	25.00	25.77	24.23	1°43'07"
1+50	25.00	25.77	24.23	2°07'55"
1+75	25.00	25.77	24.23	2°32'42"
2+00	25.00	25.77	24.23	2°57'30"
2+25	25.00	25.77	24.23	3°22'17"
2+50	25.00	25.77	24.23	3°47'04"
2+73.82	23.87	24.60	23.14	4°11'51"

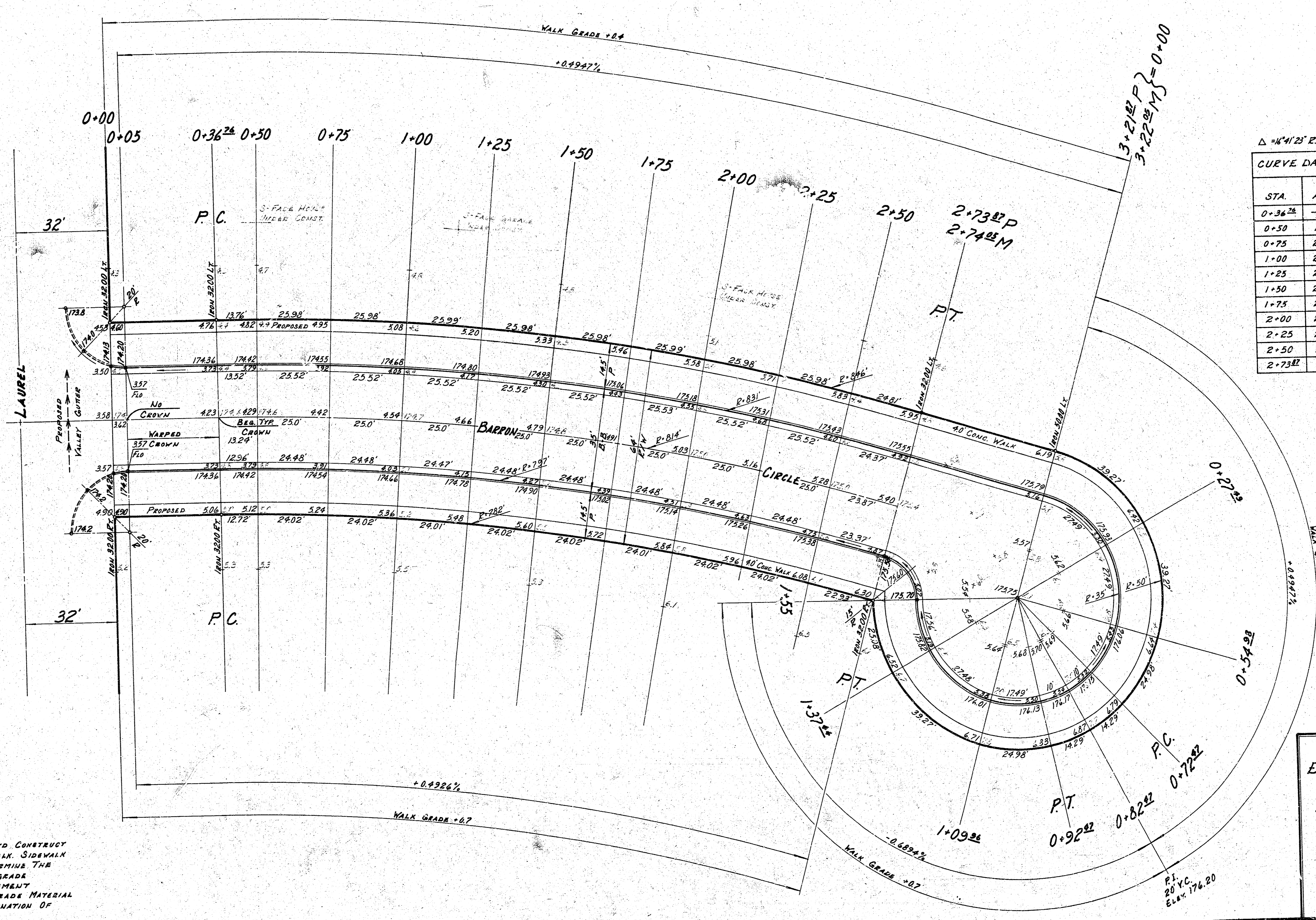
DEFL./FR. = 2.1163807 MIN.

2 EARTHWORK PROPERTY ?
 EXCAVATION 417.52 Cu Yds.
 +10% 41.75 Cu Yds.
 TOTAL 479.27 Cu Yds.
 COMPACTED FILL 38.63 Cu Yds.
 +10% 3.86 Cu Yds.
 TOTAL 42.49 Cu Yds.

M-1674 EXT.

NO MORE THAN 6-20' DRIVES TO BE CONSTRUCTED ON THIS PROJECT.

SURVEYING ENGINEER
 PLAN APPROVED BY D.L.K. 1/68
 E.C. BIRNBAUM
 CHICAGO



BARRON CIRCLE
 E.L. LAUREL TO & INCL. CUL-DE-SAC
 30-2-34 ASPHALTIC CONCRETE
 CITY OF WICHITA, KANSAS
 R.W. LINN CITY ENGINEER
 PROJECT NO. DAKS 574096
 DATE:
 (1/2)

NOTE: CONTRACTOR TO CLEAR EIGHT-OF-WAY, GRADE PARKINGS, AND CONSTRUCT COMPACTED FILL WHERE NECESSARY FOR PROPOSED SIDEWALK. SIDEWALK TO BE CONSTRUCTED BY OTHER FIELD ENGINEER IS TO DETERMINE THE TYPE OF SUBGRADE TREATMENT WHICH IS TO BE USED. SUBGRADE TREATMENT MAY CONSIST OF LIME TREATED SUBGRADE, CHEMICAL TREATED SUBGRADE, E-COMPACTION OF EXISTING SUBGRADE MATERIAL AS SPECIFIED IN STANDARD SPECIFICATIONS, OR ANY COMBINATION OF THESE.