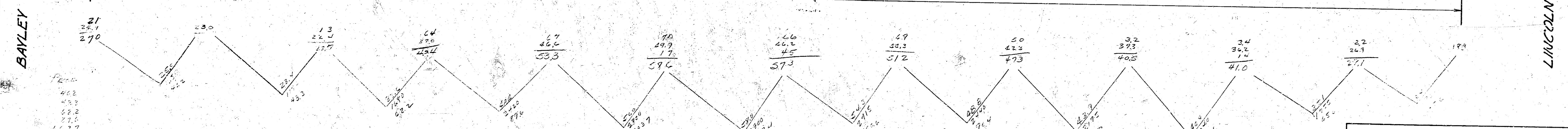
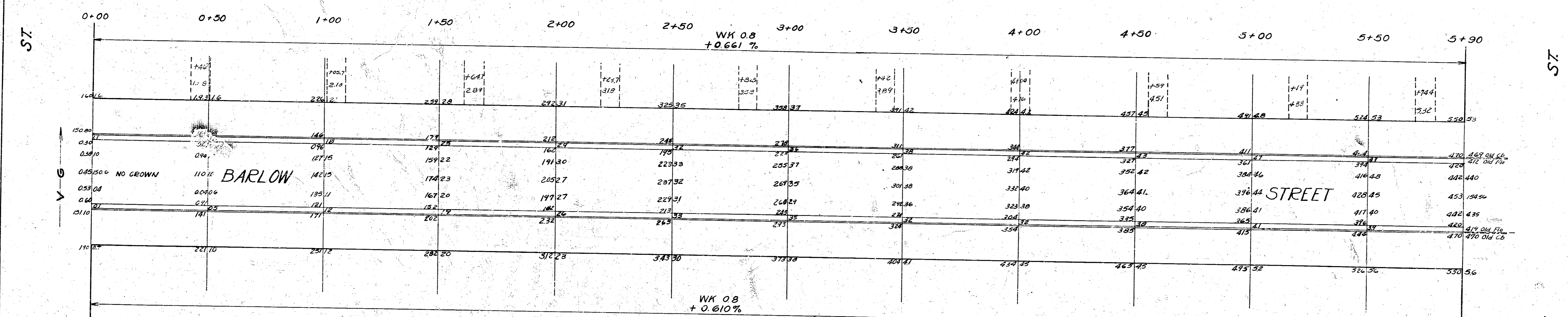


B.M. 153.43 STD. N.E. COR. LINCOLN & WOODLAWN  
 B.M. 157.30 'R' IN FITCHIE S.L. LINCOLN - W CB MISSION  
 B.M. 156.64 'E' IN FITCHIE S.L. LINCOLN - W CB DRURY LANE

20 Drives

NOTE TO FIELD ENGINEERS:  
 EXCAVATE FRESH FILL TO ORIGINAL GROUND ELEVATIONS  
 RESECTION AFTER COMPLETION OF EXCAVATION.



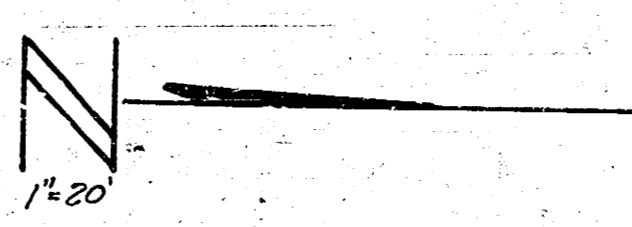
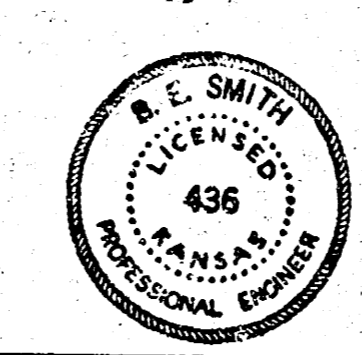
Surveyed  
 Plan  
 Checked

BAYLEY

LINCOLN

72.0  
 73.0  
 74.0  
 75.0  
 76.0  
 77.0  
 78.0  
 79.0  
 80.0  
 81.0  
 82.0  
 83.0  
 84.0  
 85.0  
 86.0  
 87.0  
 88.0  
 89.0  
 90.0  
 91.0  
 92.0  
 93.0  
 94.0  
 95.0  
 96.0  
 97.0  
 98.0  
 99.0  
 100.0

460 Tons Fill Sand 900 Cu Yds Extra Exc.



**BARLOW ST.**  
 N.E. BAYLEY ST. TO S.L. LINCOLN ST.  
 26-2-30.A.C.  
**CITY OF WICHITA, KAN.**  
 B.E. SMITH  
 Jan. 1953  
 CITY ENGINEER  
 Proj. No. C7E102

1 3 5 7 8