

Station	Point	Alignment	Deflection	Chord	Arc	Chord	Arc
10+54.90	P.C.C.	$\Delta = 26^{\circ}45'$	$13^{\circ}22'30''$	4.83	4.83	4.38	4.38
10+50		$R = 500'$	$13^{\circ}05'43''$	24.65	24.65	22.35	22.35
10+25		$L = 233.46'$	$11^{\circ}39'46''$	24.65	24.65	22.35	22.35
10+00			$10^{\circ}13'49''$	24.65	24.65	22.35	22.35
9+75			$8^{\circ}47'52''$	24.65	24.65	22.35	22.35
9+50			$7^{\circ}21'55''$	24.65	24.65	22.35	22.35
9+25			$5^{\circ}55'58''$	24.65	24.65	22.35	22.35
9+00			$4^{\circ}30'01''$	24.65	24.65	22.35	22.35
8+75			$3^{\circ}04'04''$	24.65	24.65	22.35	22.35
8+50			$1^{\circ}38'07''$	28.14	28.14	25.51	25.51
8+21.46	P.C.						

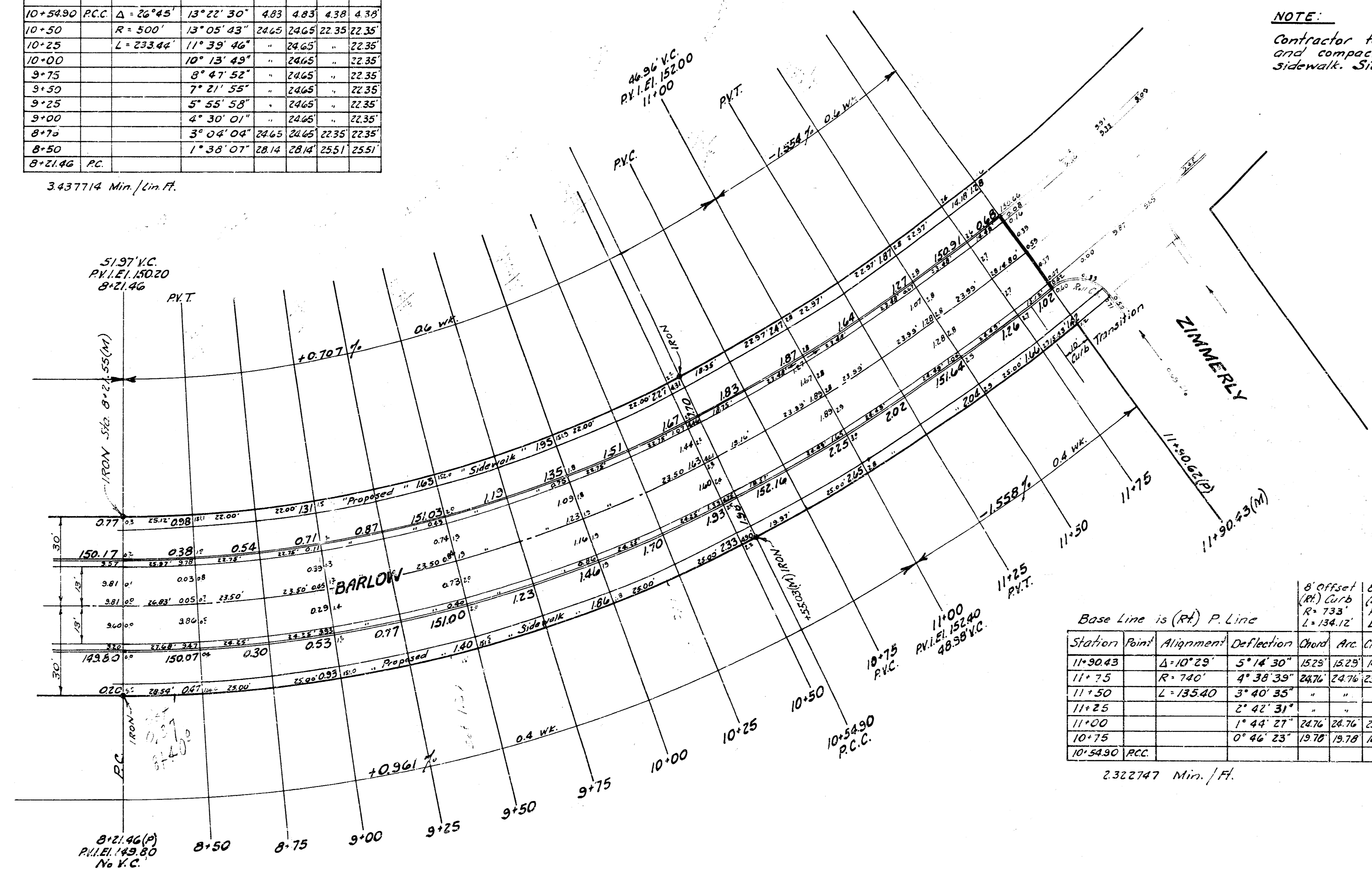
3.437714 Min./Lin. Ft.

B.M. 156.16 S.W. Corner Conc. Porch House #6906 E. Zimmerly

B.M. 152.63 S.E. Corner Conc. Step House #6700 E. Zimmerly

B.M. 155.73 "M" in Mueller Top Fire Hyd. N.W. Corner Zimmerly & Apache

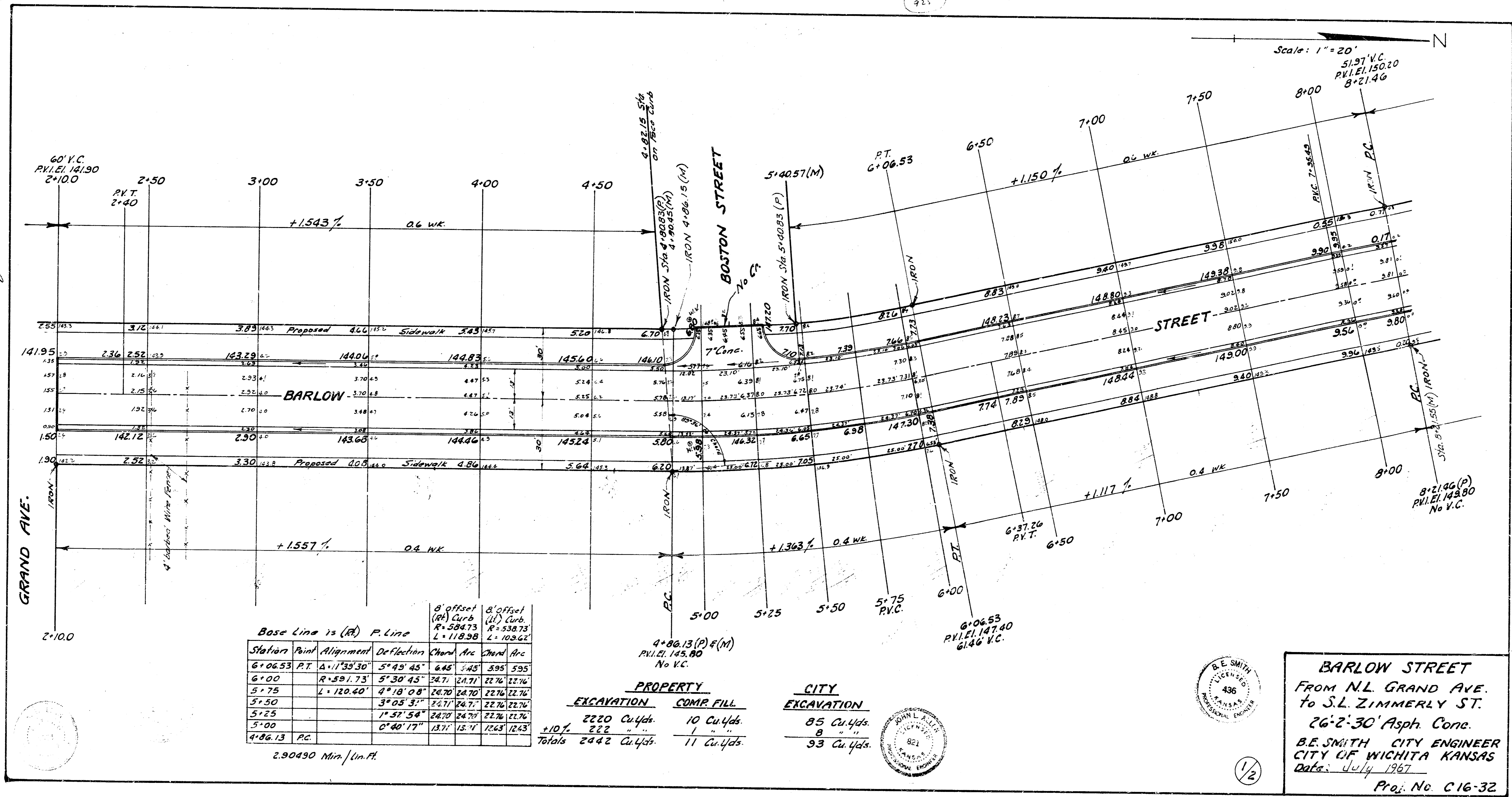
NOTE:
Contractor to clear right-of-way, grade parkings, and compact fill where necessary for proposed sidewalk. Sidewalk to be constructed by others.



Station	Point	Alignment	Deflection	Chord	Arc	Chord	Arc
11+90.43		$\Delta = 10^{\circ}29'$	$5^{\circ}14'30''$	15.25	15.25	14.32	14.32
11+75		$R = 740'$	$4^{\circ}36'39''$	24.76	24.76	23.21	23.21
11+50		$L = 135.40'$	$3^{\circ}40'35''$	24.76	24.76	23.21	23.21
11+25			$2^{\circ}42'31''$	24.76	24.76	23.21	23.21
11+00			$1^{\circ}44'27''$	24.76	24.76	23.21	23.21
10+75			$0^{\circ}46'23''$	19.70	19.70	18.54	18.54
10+54.90	P.C.C.						

Req Existing Pavement.

2.322747 Min./Ft.



Surveyed
 Plan
 EX
 Checked
 S. J. Zimmerly

Station	Point	Alignment	Deflection	Chord	Arc	Chord	Arc
6+06.53	P.T.	Δ = 113° 30'	5° 45' 45"	445	545	595	595
6+00		R = 591.73	5° 30' 45"	34.7	21.7	22.7	22.7
5+75		L = 120.40	4° 18' 08"	26.70	26.70	22.7	22.7
5+50			3° 05' 31"	26.7	26.7	22.7	22.7
5+25			1° 57' 54"	26.7	26.7	22.7	22.7
5+00			0° 40' 17"	13.7	15.7	12.65	12.65
4+86.13	P.C.						

2.90490 Min./In. Ft.

PROPERTY		CITY	
EXCAVATION	COMP. FILL	EXCAVATION	COMP. FILL
2220 Cu.Yds.	10 Cu.Yds.	85 Cu.Yds.	
+10%	222	8	
Totals 2442 Cu.Yds.	11 Cu.Yds.	93 Cu.Yds.	



BARLOW STREET
 FROM N.L. GRAND AVE.
 TO S.L. ZIMMERLY ST.
 26'-2'-30" Asph. Conc.
 B.E. SMITH CITY ENGINEER
 CITY OF WICHITA KANSAS
 Date: July 1967
 Proj. No. C16-32



1/2