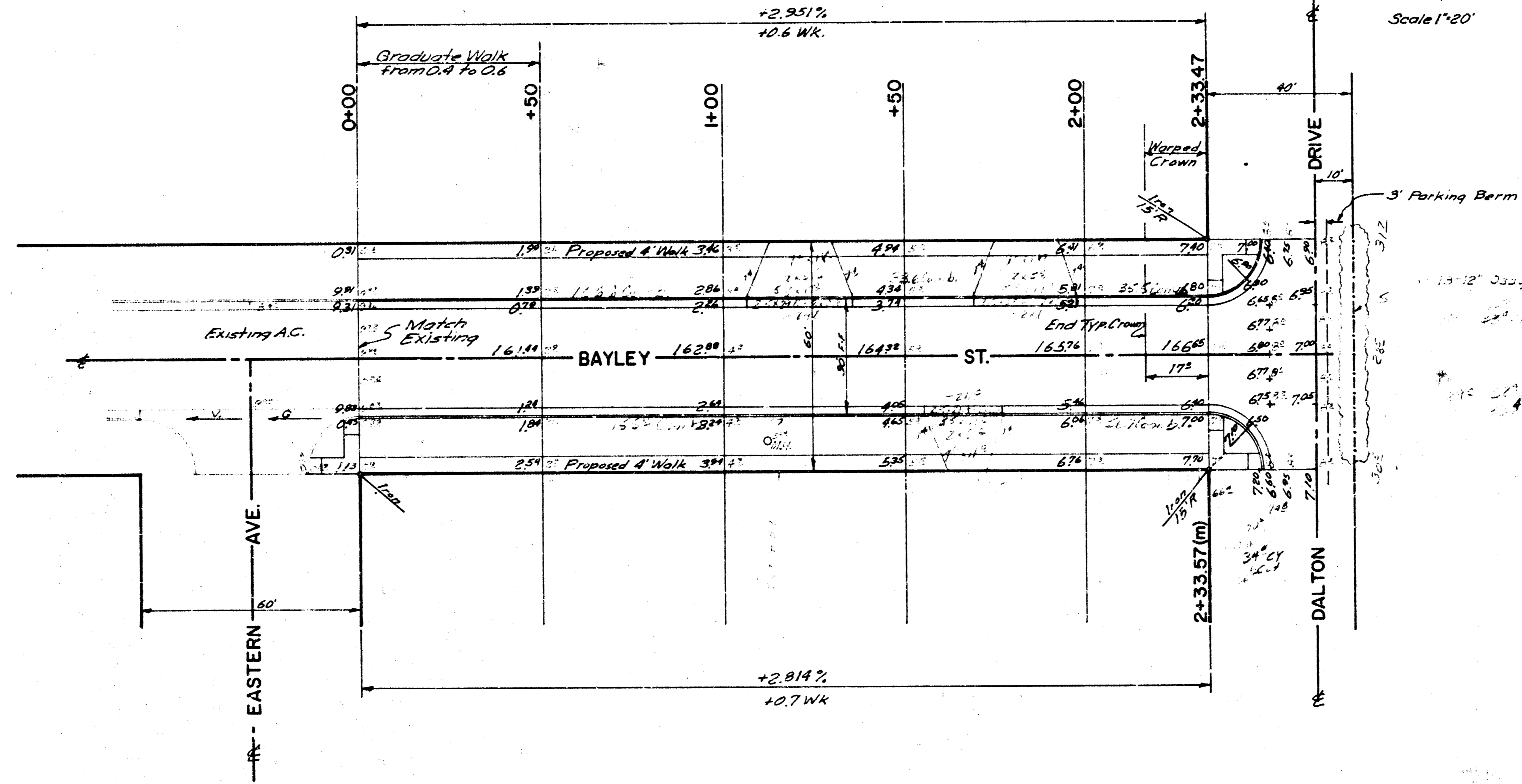


Survey  
 Plans  
 E. L. Capri  
 Drawing

B.M. 155.31 7" in Fitchie for 3' Curb  
 Bayley & E.L. Capri

NOTE: To Field Engineer and Contractor  
 Grade and Clear Parking for Proposed  
 Sidewalk.  
 Sidewalk to be Constructed by "OTHERS"

Baseline - S. Property line Bayley Street



Estimated Quantities		
Est.	Item	Price
675	Sp. Yell. Asphalt Concrete Pavement	
340	Lin. Ft. Comb. Curb and Gutter	
180	Lin. Ft. Separate Curb	
390	Sp. Ft. Separate Gutter	
550	Lin. Ft. Mastic Joint	
8155	Lbs. Reinf. Steel	
685	Excavation	
990	Sp. Ft. 6" Drive	
1	Adjust Manhole	



Earthwork Quantities  
 City  
 Excavation  
 100% 100%  
 +10% 10%  
 1103 CY

W 1/2 INTERSECTION of DALTON  
 & BAYLEY and INTERSECTION  
 of W 1/2 DALTON & N 1/2 ZIMMERLY  
 A.C.  
 B.E. SMITH CITY ENGINEER  
 CITY OF WICHITA, KANSAS  
 DATE C 17-24

BAYLEY STREET  
 From E.L. EASTERN AVE.  
 To W.L. DALTON DRIVE  
 26'-2"-30' A.C.  
 B.E. SMITH CITY ENGINEER  
 CITY OF WICHITA, KANSAS  
 DATE PRIVATE J

1/3

B.M. 144.90 "R" in Ritchie E.L. Capri -  
N. Curb Zimmerly

B.M. 158.80 "R" in Ritchie W.L. Eastern -  
N. Curb Zimmerly

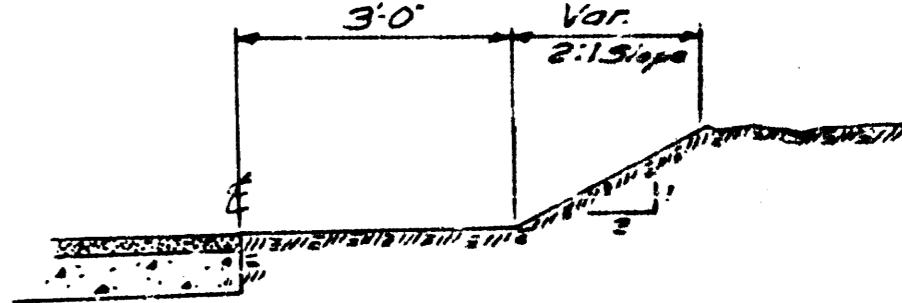
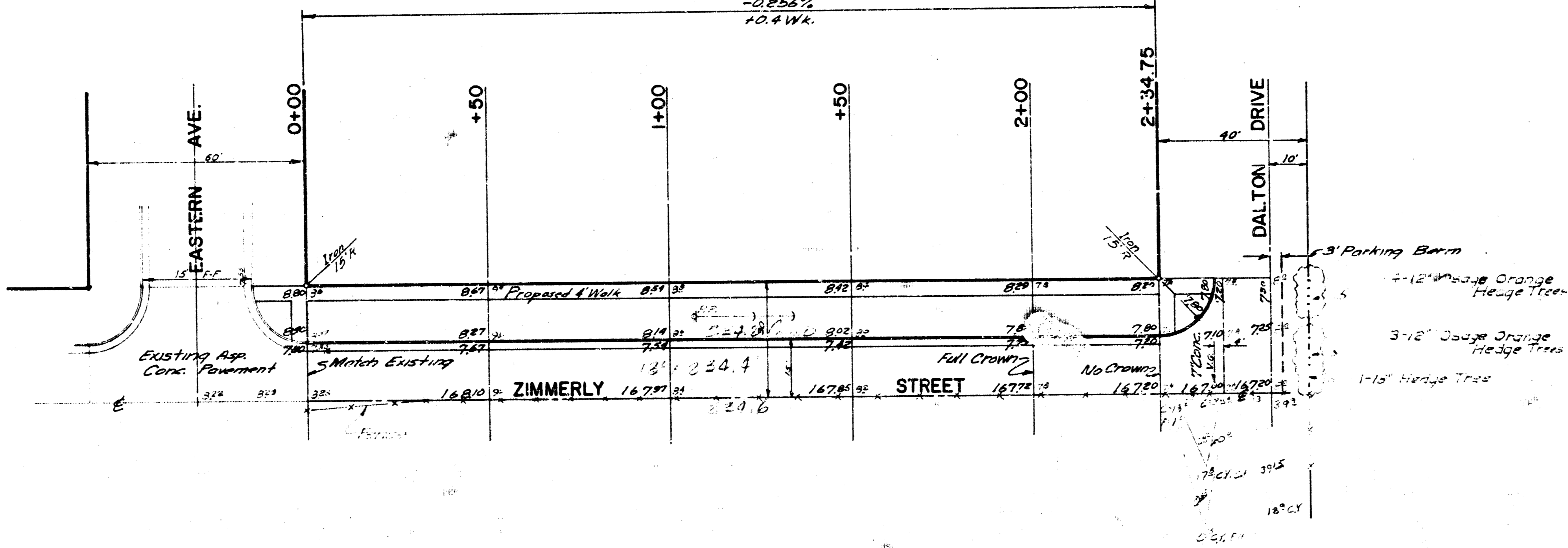
NOTE: To Field Engineer and Contractor  
Grade and Clear Parking For Proposed  
Sidewalk, Compact Fill in Sidewalk Area  
SIDEWALK TO BE CONSTRUCTED BY OTHERS

BL = N. Property line Zimmerly Street



Estimated Quantities		
Est	Item	Final
145	Sq. Yds. Asphalt Comp. Pave	
119	Lin. Ft. Comp. Curb and Gutter	
40	Lin. Ft. Separate Curb	
110	Sq. Ft. Separate Gutter	
330	Sq. Ft. 6" Drive	
285	Lin. Ft. Masses Joint	
1310	Lin. Ft. Reinf. Steel	
205	C.Y. Excavation	
5	C.Y. Comp. Fill	
235	Lin. Ft. Fence Removal	

Survey done by  
 B. E. SMITH  
 City Engineer  
 City of Wichita, Kansas



TYPICAL 3' PARKING BERM



Earthwork Quantities		
	City	Comp Fill
	36.7 C.Y.	0.3 C.Y.
-10%	3.7	0.1
	40.4 C.Y.	0.4 C.Y.

2/3

W 1/2 INTERSECTION of DALTON  
& BAYLEY and INTERSECTION  
of W 1/2 DALTON & N 1/2 ZIMMERLY  
A.C.  
B. E. SMITH CITY ENGINEER  
CITY OF WICHITA, KANSAS  
DATE C 17-24

N 1/2 ZIMMERLY STREET  
From E. L. EASTERN AVE.  
To W. L. DALTON DRIVE  
13'-2'-15" A.C.  
B. E. SMITH CITY ENGINEER  
CITY OF WICHITA, KANSAS  
DATE PRIVATE JOB