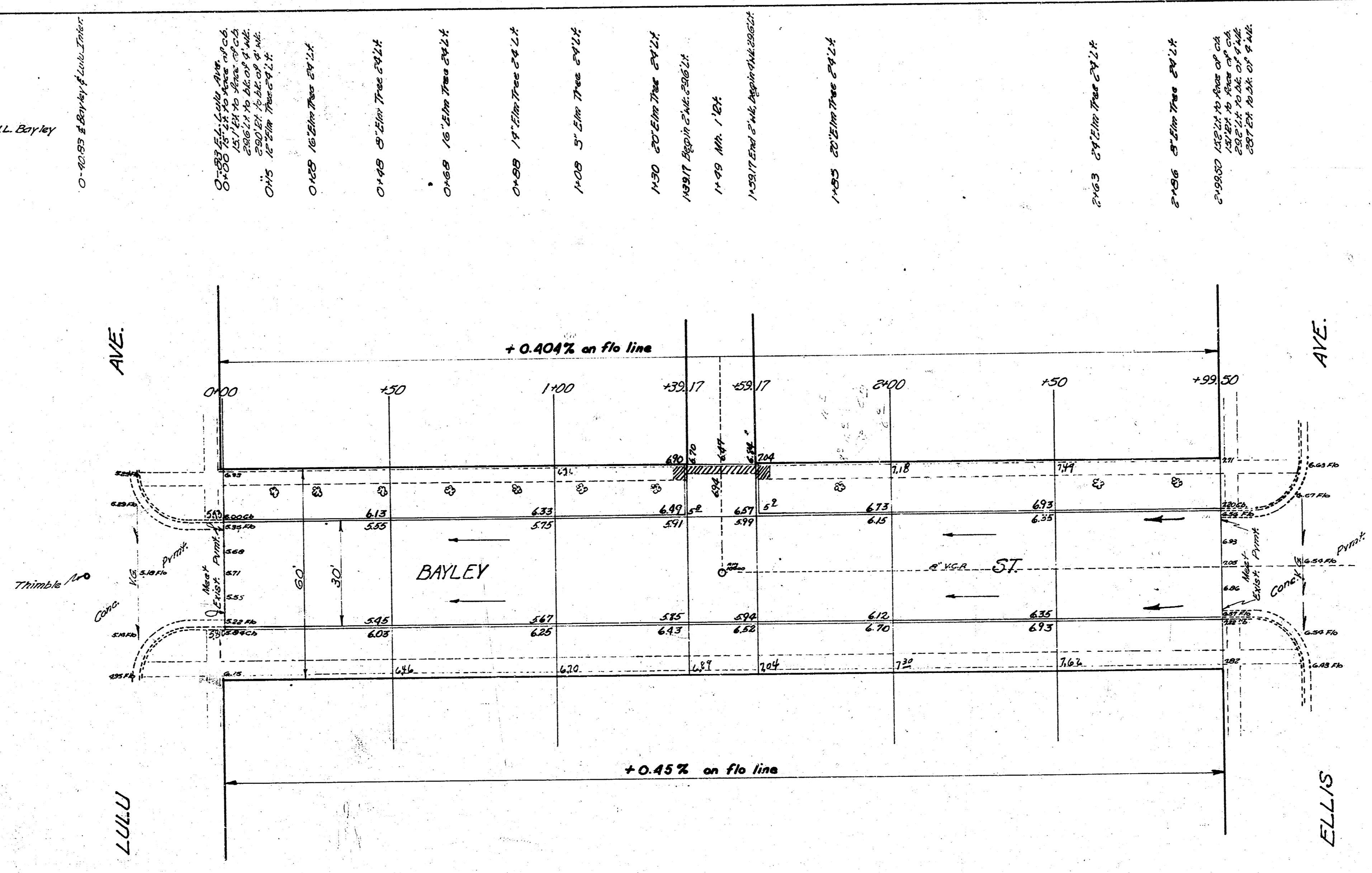


Survey 67  
Plan 185  
Checked S. H. C.

Excavation  
Property City  
113.9 3 1/2  
11.4 6 1/2  
10% 9.9  
125.3 cu yds  
10% 10  
10.9 cu yds

Stationing on 4" D.K. 185-94 15' in GLOBE top curb E.S. Lulu, N.L. Bayley



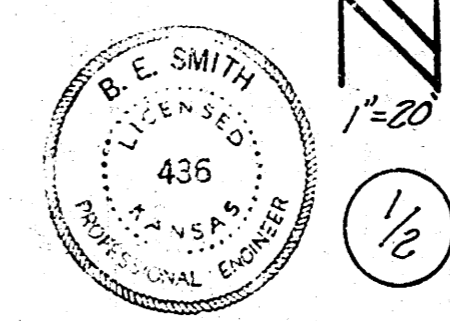
- 0+00 18" Dia. Tree C&G
- 0+05 18" Dia. Tree C&G
- 0+10 18" Dia. Tree C&G
- 0+15 18" Dia. Tree C&G
- 0+20 18" Dia. Tree C&G
- 0+25 18" Dia. Tree C&G
- 0+30 18" Dia. Tree C&G
- 0+35 18" Dia. Tree C&G
- 0+40 18" Dia. Tree C&G
- 0+45 18" Dia. Tree C&G
- 0+50 18" Dia. Tree C&G
- 0+55 18" Dia. Tree C&G
- 0+60 18" Dia. Tree C&G
- 0+65 18" Dia. Tree C&G
- 0+70 18" Dia. Tree C&G
- 0+75 18" Dia. Tree C&G
- 0+80 18" Dia. Tree C&G
- 0+85 18" Dia. Tree C&G
- 0+90 18" Dia. Tree C&G
- 0+95 18" Dia. Tree C&G
- 0+99.90 18" Dia. Tree C&G

**BAYLEY ST**  
E.L. LULU AVE. TO N.L. ELLIS AVE.  
30' CONC. & C&G.

CITY OF WICHITA, KAN.

B.E. SMITH  
JAN 1953

CITY ENGINEER  
Plan No. C12/109



1"=20'

1/2"