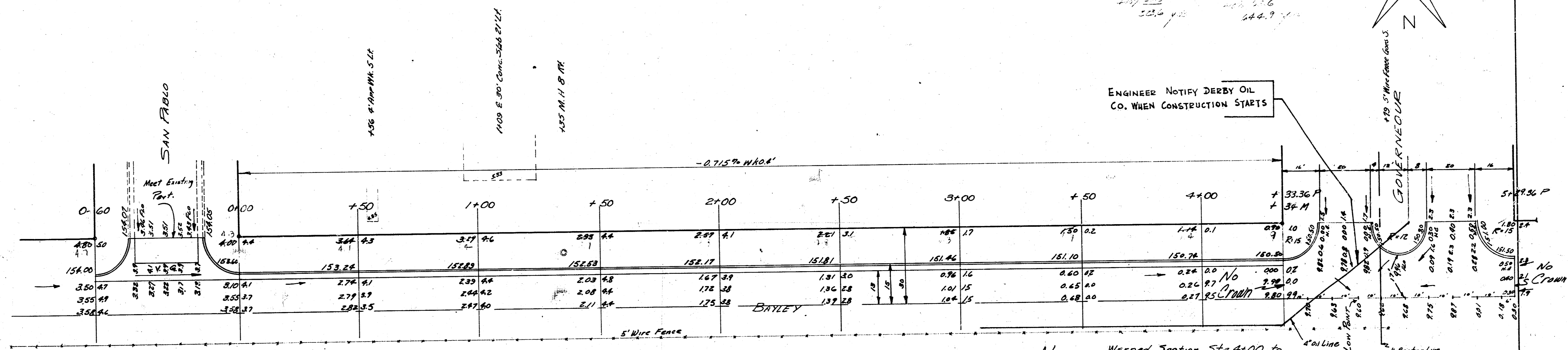


B.M. 154.05 R in Ratchet E. Curb San Pablo HL Bayley
 B.M. 152.67 R in Ratchet E. Curb San Pablo SL Lincoln

Stationing on N/P

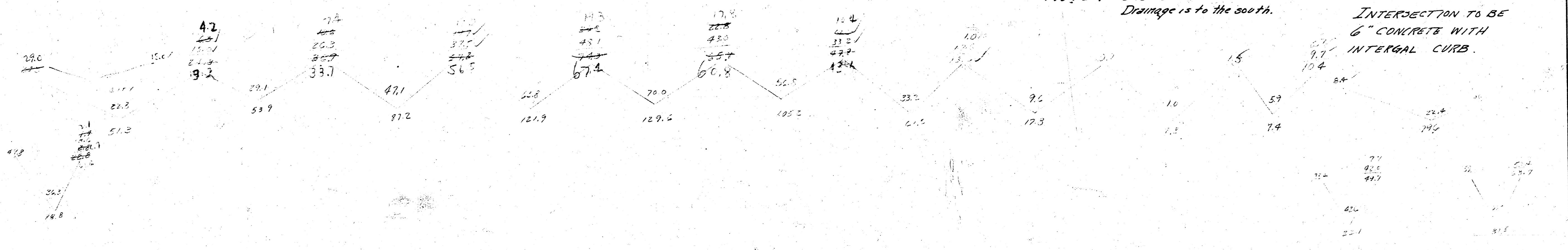
2533 510.3
 2534 442.5
 2535 244.9



NOTE: Warped Section Sta 4+00 to 5+23.36 Use elevations shown. Drainage is to the south.

INTERSECTION TO BE 6" CONCRETE WITH INTERNAL CURB.

Surveyed From 4-2-34 Checked 7/7



BAYLEY, N.E.
 W/ SAN PABLO TO EL GOVERNADOR
 13-2-15 A.C.
 CITY OF WICHITA, KANS.
 B.E. SMITH CITY ENGINEER
 MAY 1934 PROJ. C14-43

