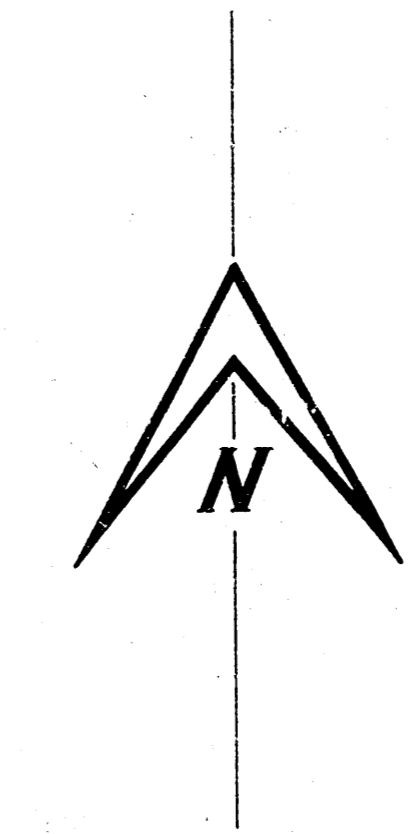
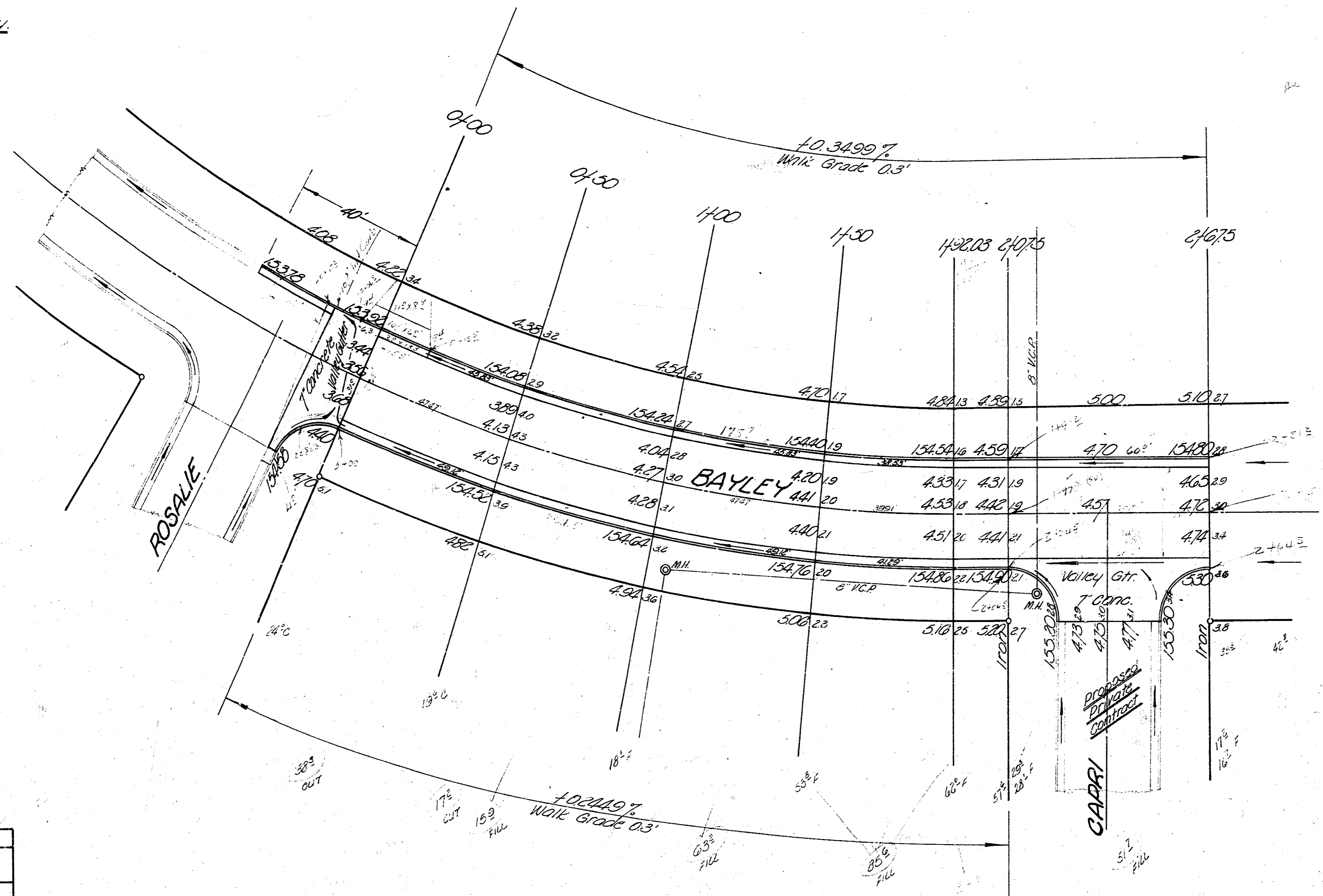


Baseline T.M. of South Property Line Bayley.



QUANTITIES
 6383 sq yd. asph conc. pavement
 4806 lin. ft. comb. curb & gutter
 386 lin. ft. reinf. int. curb
 807 sq yd. 7" conc. pavement
 1970 lbs. reinforcing steel
 355 cu yd. excavation
 2164 cu yd. compacted fill
 502 sq yd. pavement removed
 676 lin. ft. comb. cb. & gtr. rem.
 2 tons asphaltic concrete
 160 sq yd. asph surface rem.



CURVE DATA					
Radius T.M. of S. E. = 453.97'		E.D. = 12° 03' 53"			
Curve Length = 192.03'		Min. per Ft. = 376296			
STA.	ARC	CHORD		DEFL.	E. DEFL.
		8' off	16' off		
0+00					
0+50	30.00	44.93	49.97	5° 08' 28.9"	3' 08" 2.9"
1+00					
1+50	50.00	44.93	49.97	5° 08' 28.9"	3' 08" 2.9"
1+92.03	42.03	37.77	42.01	2° 30' 26.3"	1' 03" 3.3"

Excavation		Comp. Fill	
prop.	city	prop.	city
355	00	2164	702
			10%
			772 cu yd

1/2 Intersection
 Bayley & Capri
 (was 'BSEWIC')
 City of Wichita, Kansas
 B.E. Smith City Engr.
 Date: Proj. 09-149

BAYLEY
 E.L. Rosalie to F.L. Capri
 26'-2'-30' A.C.
 City of Wichita, Kansas
 B.E. Smith City Engr.
 Date: Private Contract

11/11/14
 B.E. Smith
 City Engineer
 City of Wichita, Kansas