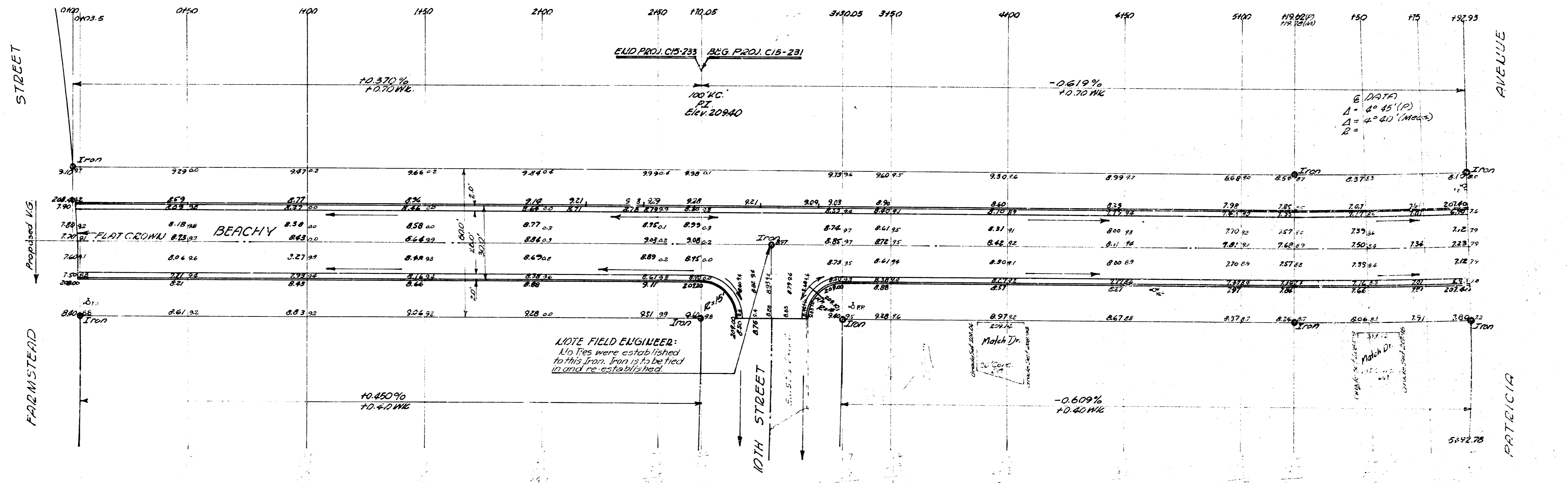
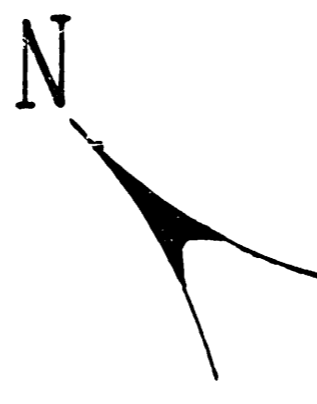


BM - 208.53 NE cor conc. step Hoth 1086 Patricia.
 BM - 199.92 E.E. spike NE side H.L.P. SE cor Woodlawn & Beachy
 Stationing on E.

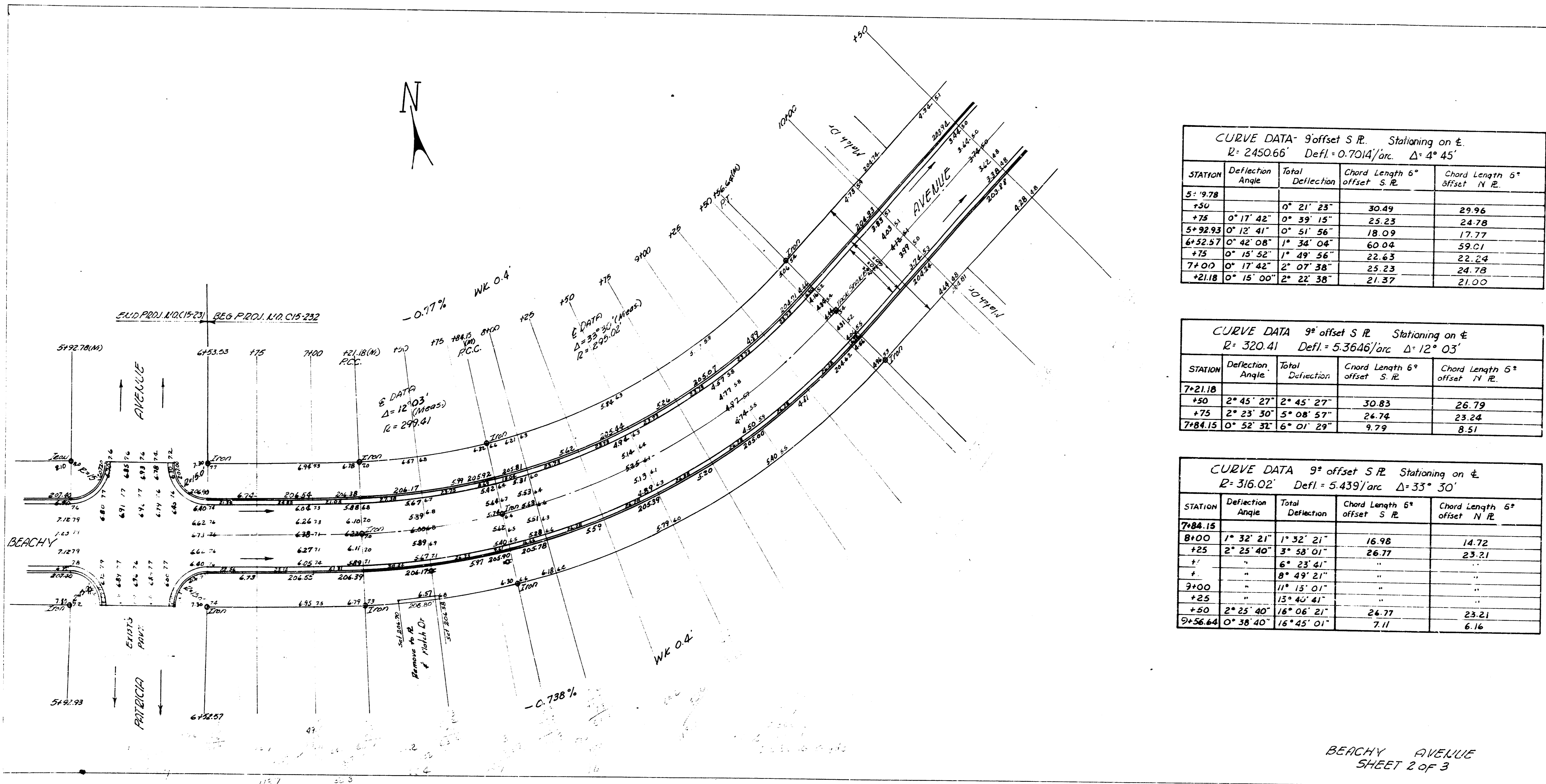


1955
 APR 17 1955

BEACHY AVENUE
 W. 10TH ST. - S. FARMSTEAD ST.
 W. 10TH ST. - S. PATRICIA AVE.
 S. PATRICIA AVE. - W. WOODLAWN BLVD.
 26-2-30 R.C.
 CITY OF WICHITA, KANSAS
 B.E. SMITH CITY ENGINEER
 APRIL 1956 PROJ. NO. CB-231-232-233



SHEET 1 OF 3



CURVE DATA 9' offset S.R. Stationing on E.
 $R = 2450.66'$ Defl. = $0.7014'$ /arc $\Delta = 4^\circ 45'$

STATION	Deflection Angle	Total Deflection	Chord Length 6' offset S.R.	Chord Length 6' offset N.R.
5+97.8		$0^\circ 21' 23''$	30.49	29.96
+75	$0^\circ 17' 42''$	$0^\circ 39' 15''$	25.23	24.78
5+92.93	$0^\circ 12' 41''$	$0^\circ 51' 56''$	18.09	17.77
6+52.97	$0^\circ 42' 08''$	$1^\circ 34' 04''$	60.04	59.01
+75	$0^\circ 15' 52''$	$1^\circ 49' 56''$	22.63	22.24
7+00	$0^\circ 17' 42''$	$2^\circ 07' 38''$	25.23	24.78
+21.18	$0^\circ 15' 00''$	$2^\circ 22' 38''$	21.37	21.00

CURVE DATA 9' offset S.R. Stationing on E.
 $R = 320.41$ Defl. = $5.3646'$ /arc $\Delta = 12^\circ 03'$

STATION	Deflection Angle	Total Deflection	Chord Length 6' offset S.R.	Chord Length 6' offset N.R.
7+21.18		$2^\circ 45' 27''$	30.83	26.79
+50	$2^\circ 45' 27''$	$5^\circ 08' 57''$	24.74	23.24
7+84.15	$0^\circ 52' 32''$	$6^\circ 01' 29''$	9.79	8.51

CURVE DATA 9' offset S.R. Stationing on E.
 $R = 316.02$ Defl. = $5.439'$ /arc $\Delta = 33^\circ 30'$

STATION	Deflection Angle	Total Deflection	Chord Length 6' offset S.R.	Chord Length 6' offset N.R.
7+84.15		$1^\circ 32' 21''$	16.98	14.72
8+00	$2^\circ 25' 40''$	$3^\circ 58' 01''$	26.77	23.21
+25	"	$6^\circ 23' 41''$	"	"
"	"	$8^\circ 49' 21''$	"	"
9+00	"	$11^\circ 15' 01''$	"	"
+25	"	$13^\circ 40' 41''$	"	"
+50	$2^\circ 25' 40''$	$16^\circ 06' 21''$	26.77	23.21
9+56.64	$0^\circ 38' 40''$	$16^\circ 45' 01''$	7.11	6.16

BEACHY AVENUE
 SHEET 2 of 3

