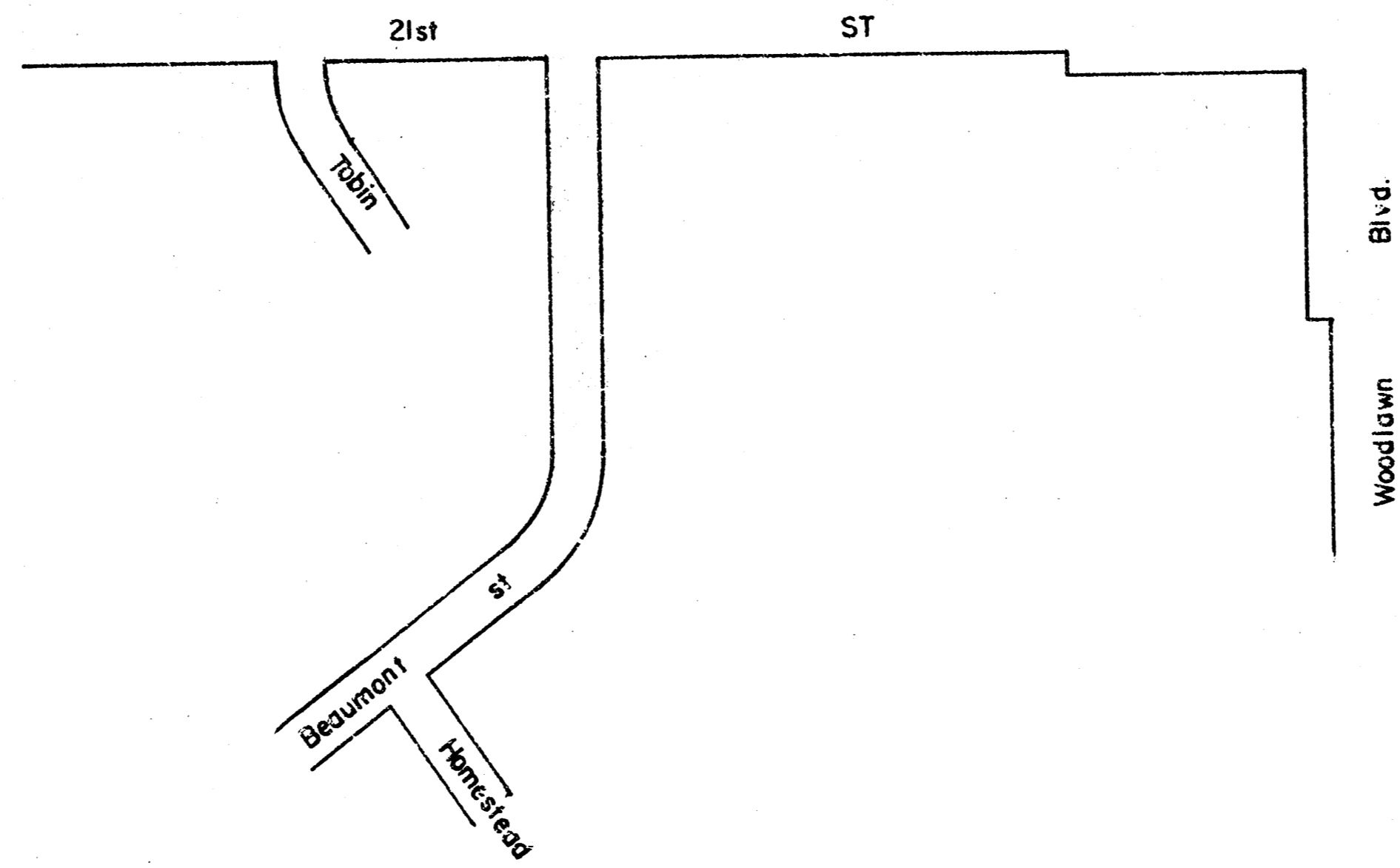
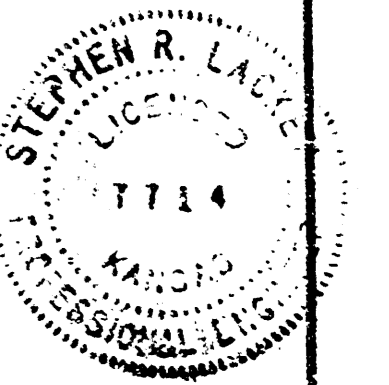


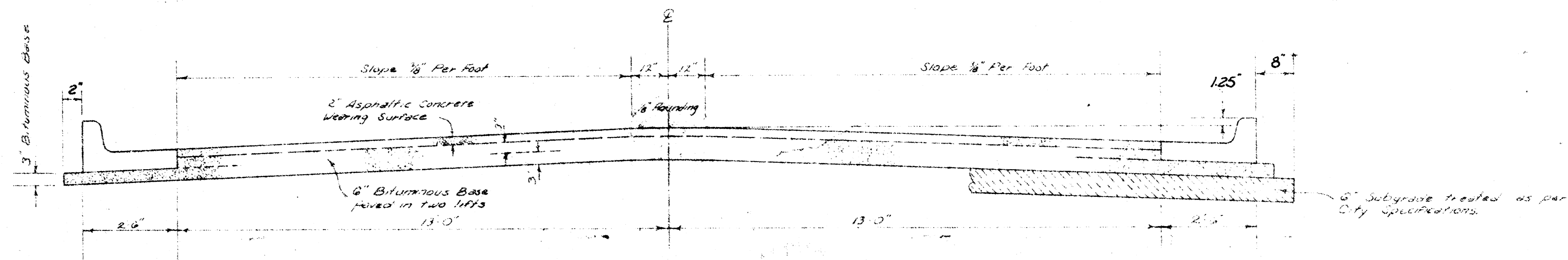
BEAUMONT ST.
443' S. of 21st. st N. to SL of 21st st.



Dept. Engineering
City of Wichita, Kansas
R. W. Bruggeman Dir. Engineering / City Engineer
Proj. no. 472-76-245-80911-000-000-001
Date _____



BEAUMONT ST.



TYPICAL SECTION

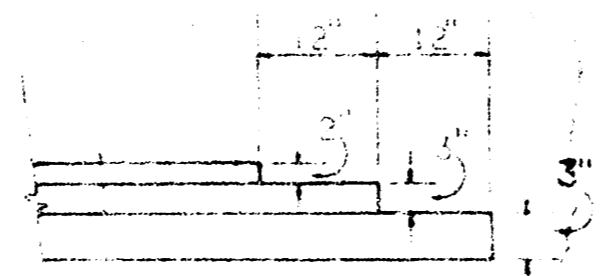
3' ASPHALTIC CONCRETE PAVEMENT WITH BITUMINOUS BASE

A TACK COAT OF EMULSIFIED ASPHALT (SS-1H) SHALL BE APPLIED AT AN APPROXIMATE RATE OF 0.05 GALLONS PER SQ. YD. BETWEEN LIFTS OF ASPHALTIC MATERIALS WHEN ORDERED BY THE ENGINEER. TACK COAT WILL NOT BE PAID FOR DIRECTLY AND SHALL BE CONSIDERED AS SUBORDINARY TO PRICE BID FOR ASPHALTIC PAVEMENT.

BITUMINOUS BASE AND ASPHALTIC CONCRETE WEARING SURFACE SHALL BE PLACED WITH A LAYDOWN MACHINE HAVING AUTOMATIC CONTROLS FOR CROWN AND GRADE. CONSTRUCTION JOINTS IN EACH LIFT SHALL BE STAGGERED A MINIMUM DISTANCE OF 1' WITH JOINTS IN PRECEDING LIFTS AND SUCH THAT A JOINT WILL BE CONSTRUCTED ON THE PAVEMENT CENTERLINE IN THE TOP LIFT.

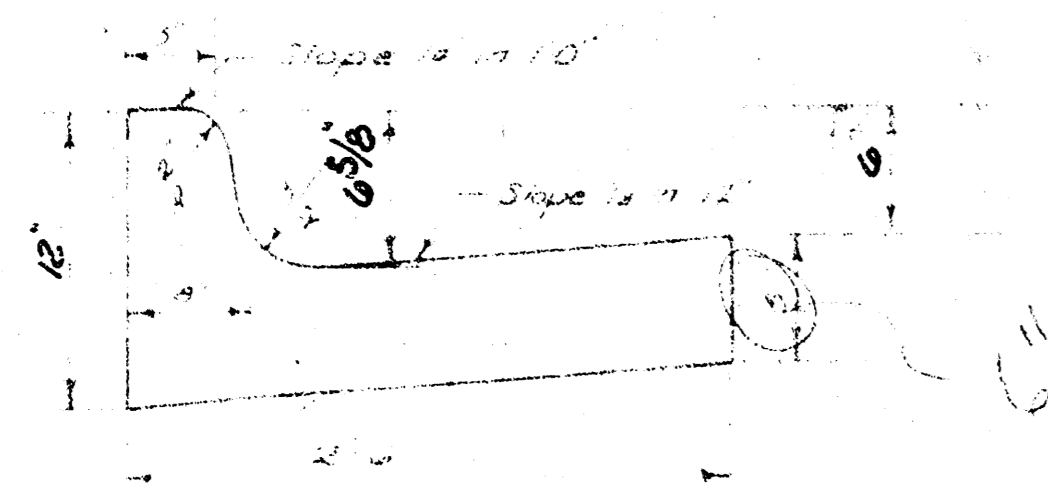
The A.C. pavement between the Comb. Curb & gutter shall be paid as 3" Asphaltic Concrete (3" Asphaltic Concrete Wearing Surface) on 6" Bituminous Base. The Bituminous Base under the Comb. Curb & gutter shall be paid as 3" Bituminous Base.

DETAIL OF TRANSVERSE CONSTRUCTION JOINTS

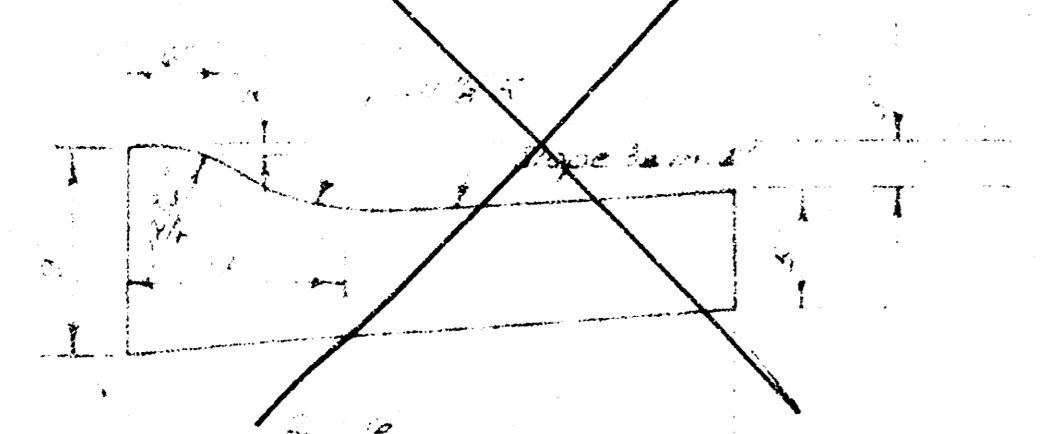


TRANSVERSE CONSTRUCTION JOINTS SHALL BE CONSTRUCTED IN FLEXIBLE BASE PAVEMENTS AT LOCATIONS WHERE PAVEMENT TEMPORARILY ENDS TO FACILITATE FUTURE PAVEMENT CONSTRUCTION AS SHOWN BY DETAIL. THE COST OF CONSTRUCTING THE TRANSVERSE CONSTRUCTION JOINTS SHALL NOT BE MEASURED OR PAID FOR DIRECTLY BUT SHALL BE INCLUDED IN THE BID PRICE FOR SQUARE YARDS OF ASPHALTIC CONCRETE PAVEMENT.

COMBINED CURB & GUTTER



ROLL TYPE CURB & GUTTER



CITY OF WICHITA, KANSAS

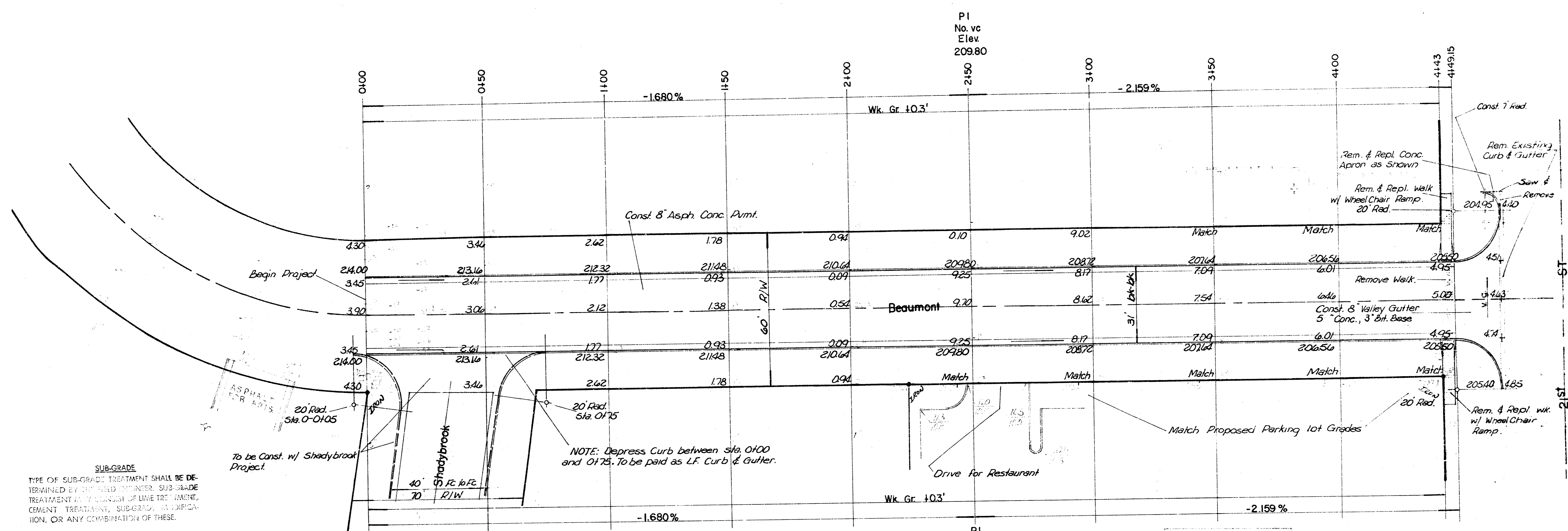
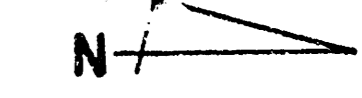
DEPARTMENT OF ENGINEERING

DATE _____

2/4

BM 200.65 Woodlawn & 21st. st N., City Std. Disc. 45.4' E. & 45.4' N. of C both
 BM 204.78 + Top N. cb. 21st. st., 0.55' W. of C Beaumont or 90.0' W. of Woodlawn.
 BL is C Beaumont.

5-20' DRIVES



SUB-GRADE
 TYPE OF SUB-GRADE TREATMENT SHALL BE DETERMINED BY THE FIELD ENGINEER. SUB-GRADE TREATMENT MAY CONSIST OF LIME TREATMENT, CEMENT TREATMENT, SUB-GRADE STABILIZATION, OR ANY COMBINATION OF THESE.

THE CONTRACTOR SHALL BE RESPONSIBLE FOR PRESERVING PROPERTY ADJACENT TO THE PROJECT. THE CONTRACTOR SHALL BE RESPONSIBLE TO ESTABLISH ANY PROTECTIVE MEASURES THAT ARE DAMAGED OR DESTROYED. ALL STRUCTURAL OPERATIONS SHALL BE ESTABLISHED BY A PROFESSIONAL SURVEYOR OR A LICENSED PROFESSIONAL ENGINEER IN ACCORDANCE WITH STATE LAWS.

| | Earthwork | |
|--------------|-----------|--------|
| | Property | City |
| Excavation | 670.0 cy | 644 cy |
| 110% | 67.0 cy | 64 cy |
| Total | 737.0 cy | 708 cy |
| Manipulation | 1345.7 sy | |

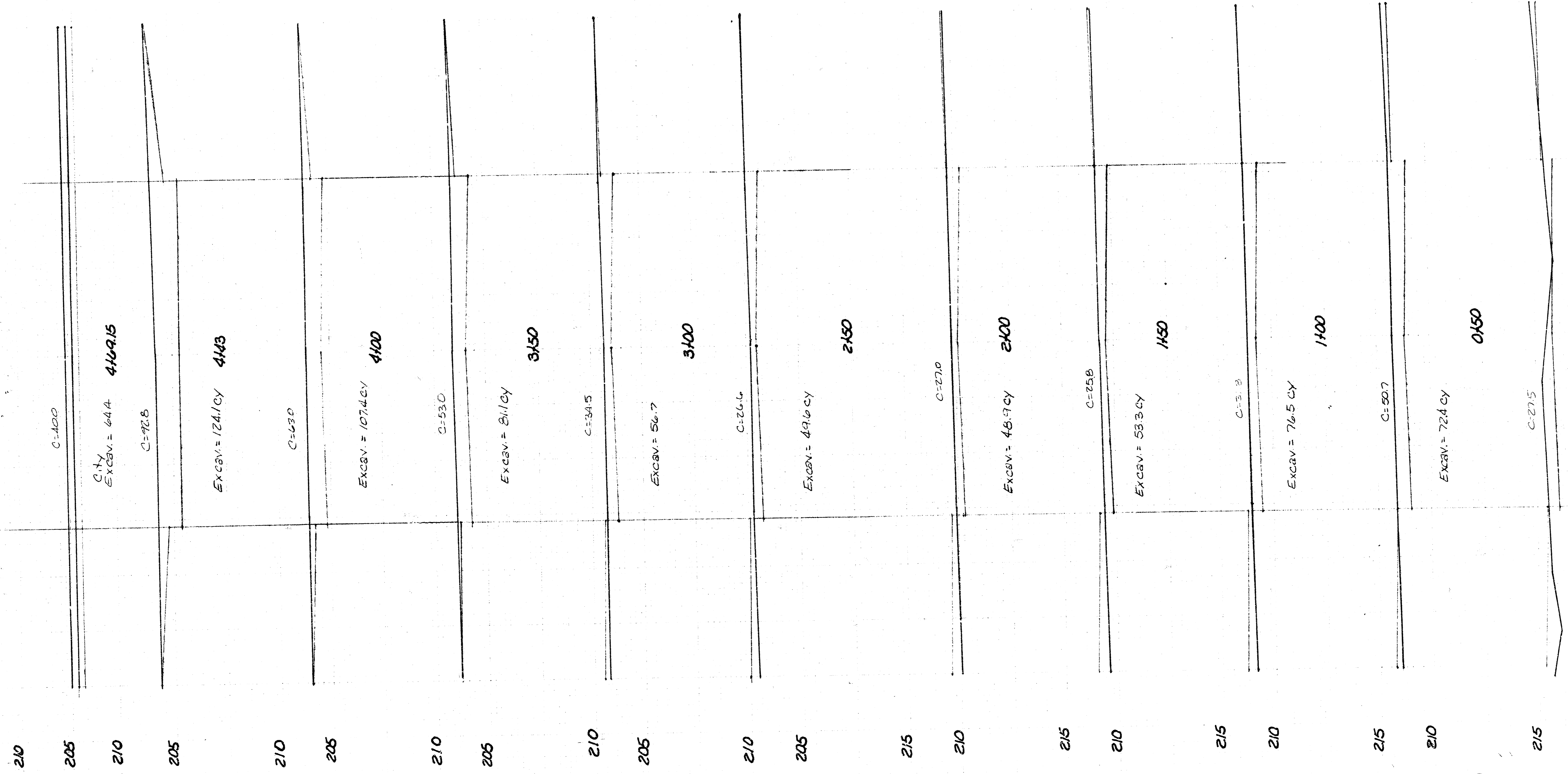
| INTERSECTION QUANTITIES | |
|-------------------------|--|
| 266 | SF 6" Drive |
| 194 | S.Y. 3" Asphaltic Conc. Pavement (6" Bituminous Base) |
| 33 | S.Y. 3" Bituminous Base |
| 123 | LF. Concrete Curb & Gutter |
| 63.1 | LF. Integ. Curb |
| 56 | S.F. 4" x 4" x 12" Trip |
| 2117 | S.F. 2" W.P. |
| 708 | C.Y. Earthwork |
| 105 | C.Y. Gravel |
| 125 | LF. Saw Jt. |
| 1262 | S.Y. Manipulation |
| 1.6 | Tons Lime Cement |
| 1019 | S.Y. 5" Concrete & 3" Asphaltic Concrete Base |
| 330 | SF Walk & Drive Removed |
| 78 | LF Curb & Gutter Removed |

PI
 No. vc
 Elev
 209.80

Beaumont
 443' S. of 21st st. N. to SL of 21st N.
 Proj. no. 472-76-245-80911-000-000-001

ENGINEER TO FINAL MEASURE INTERSECTION.

Survey /
 Plan /
 Fleming
 L.A.
 Chicago



30 20 10 0 10 20 30

Excav. 620 CY
 Earthwork 644 CY