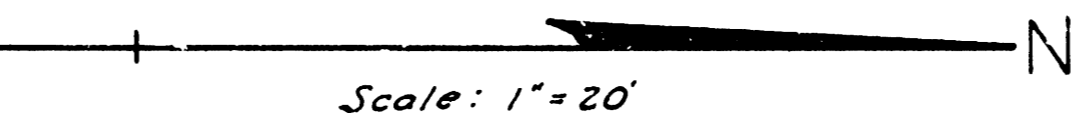
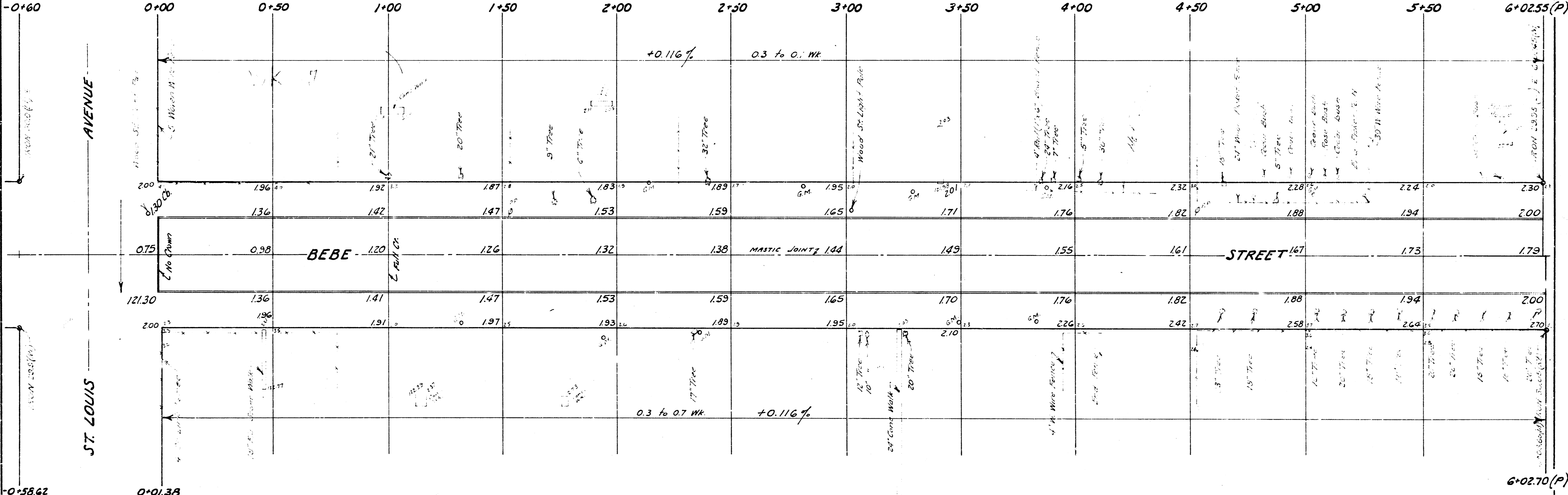


B.M. 12308 RR Spike on E. side P. Pole
on NW corner Bebe & St. Louis



B.M. 123695 RR Spike on W. side Large
Elm Tree, S.E. corner Bebe & Newell



J.F.G. J.L.A.

PROPERTY		CITY
EXC.	COMP. FILL	EXCAVATION
1520 Cu Yds	52 Cu Yds	114 Cu Yds
+10% 152	5	11
Totals 1672 Cu Yds	57 Cu Yds	125 Cu Yds

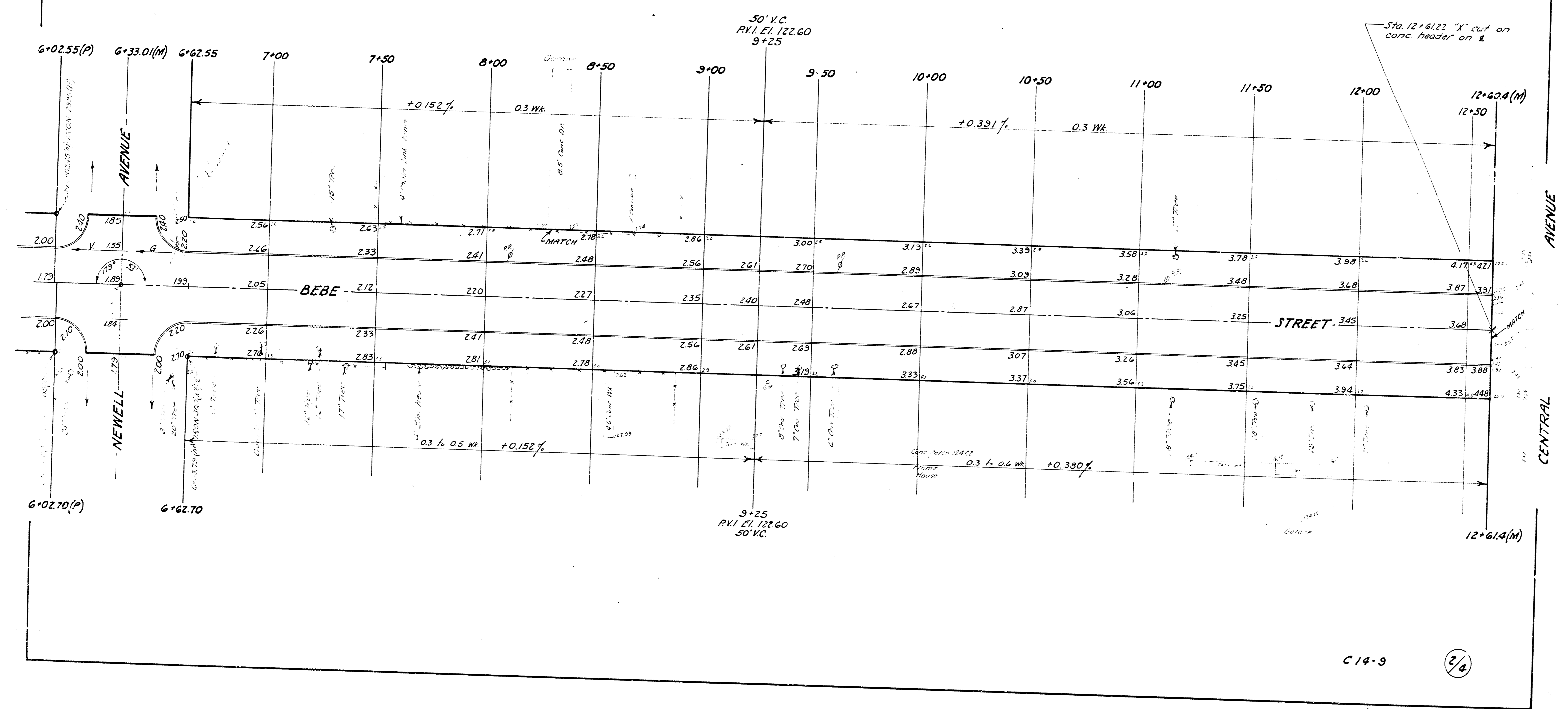
Top Foundation
12265
Frame House

BEBE STREET
FROM N.L. ST. LOUIS AVENUE
TO S.L. CENTRAL AVENUE
30"-6" CONC. & INT. CURB
B.E. SMITH CITY ENGINEER
CITY OF WICHITA, KANSAS
Date: June 1944
Proj. No. C14-9

1/4

TIES TO IRON ON E BEBE & NEWELL
 1. 30.25' NW to nail in bottle cap on SW side P.Pole.
 2. 46.71' E.N.E. to nail in bottle cap on SE side large elm tree.
 3. 43.33' E.S.E. to nail in bottle cap on SW side large elm tree.

B.M. 123.905 "X" cut top so curb
 on Central at E.L. Bebe



C14-9

2/4