

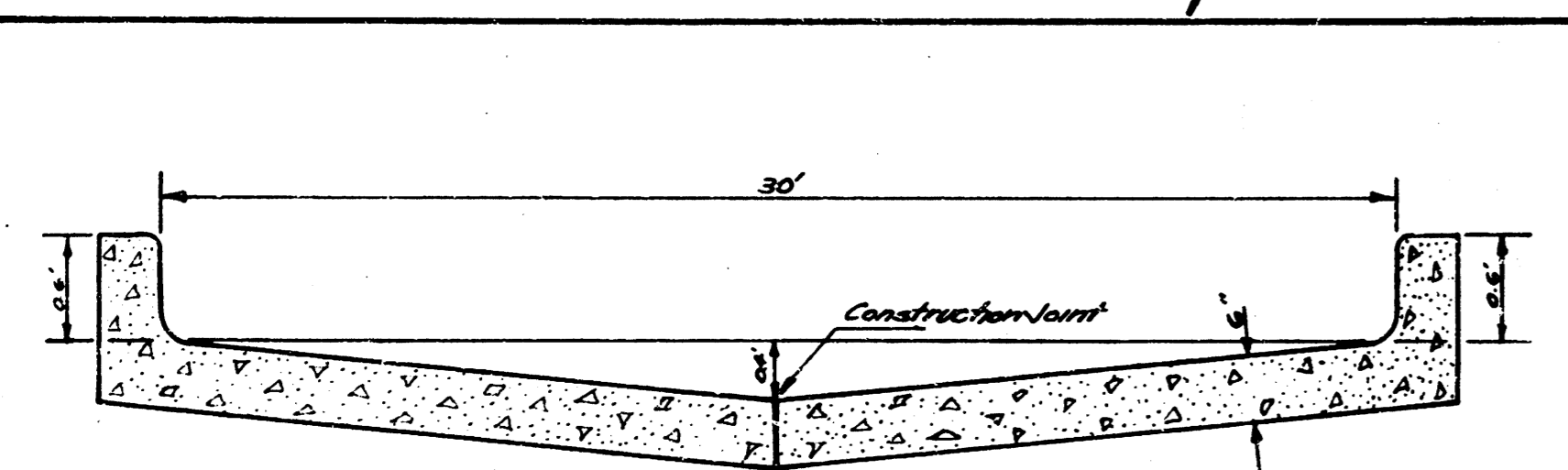
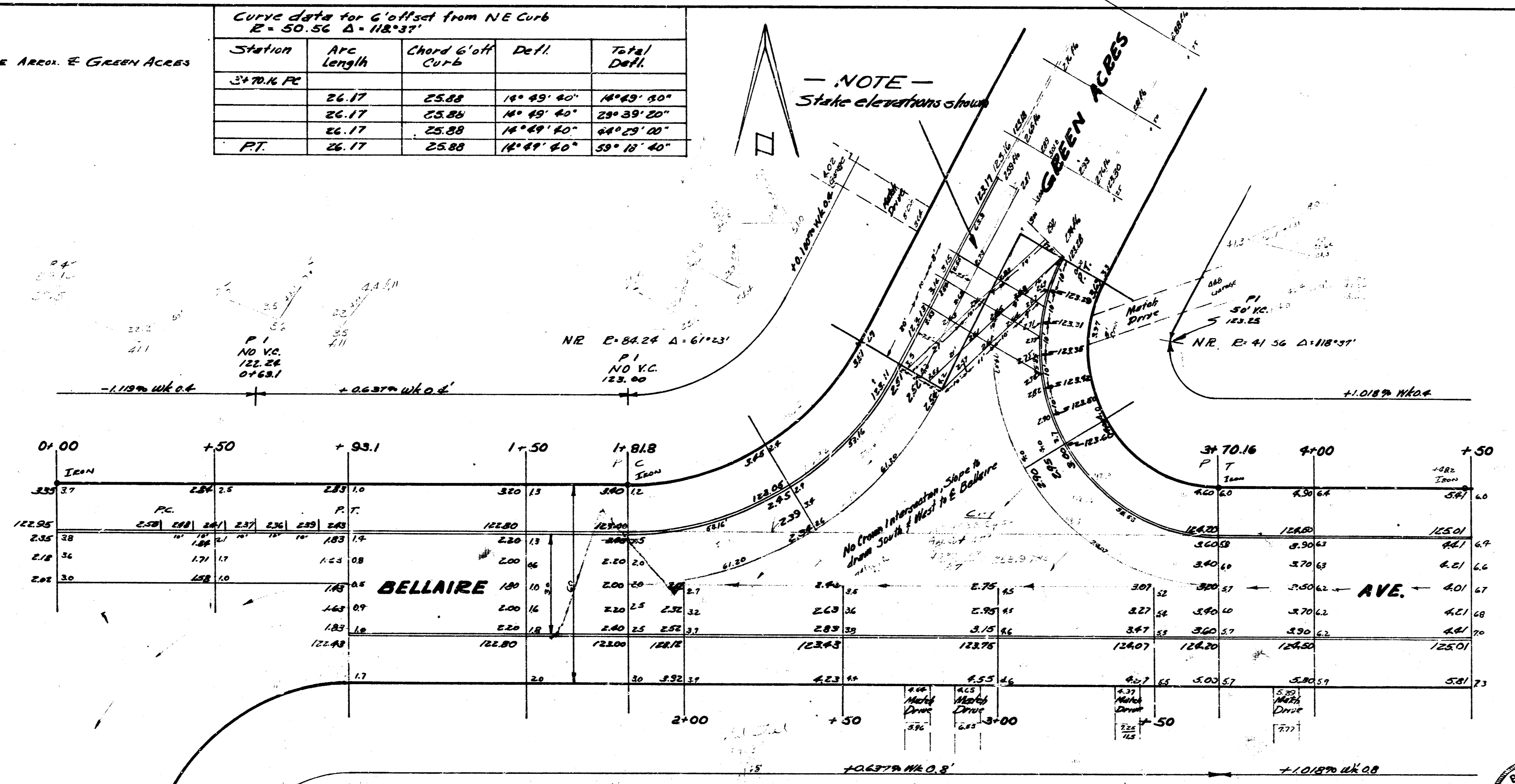
CAN 75

BM 12487 ION SL BELLAIRE AREA, E GREEN ACCESS
STATIONING ON N/R

Curve data for G' offset from NE Curb
E = 50.56 Δ = 118°37'

| Station | Arc Length | Chord G' off Curb | Defl. | Total Defl. |
|---------|------------|-------------------|-----------|-------------|
| 3+70.16 | 26.17 | 25.88 | 18°49'40" | 18°49'40" |
| | 26.17 | 25.88 | 18°49'40" | 37°39'20" |
| | 26.17 | 25.88 | 18°49'40" | 56°29'00" |
| P.T. | 26.17 | 25.88 | 18°49'40" | 74°18'40" |

NOTE - State elevations shown



Curve data for G' offset from face of curb NW Green Access Bellaire
Δ = 61°23'

| Station | Arc Length | Chord G' off Curb | Defl. | Total Defl. |
|---------|------------|-------------------|-----------|-------------|
| PC | 43.94 | 43.55 | 15°20'45" | 15°20'45" |
| PT | 43.94 | 43.55 | 15°20'45" | 30°41'30" |



BELLAIRE
EL WALLACE TO WL DROLLINGER
30' CONC. & CB.
CITY OF WICHITA KANSAS
LK WHITE CITY ENGINEER
JULY 1952 Proj. No. 612-41

1
2

