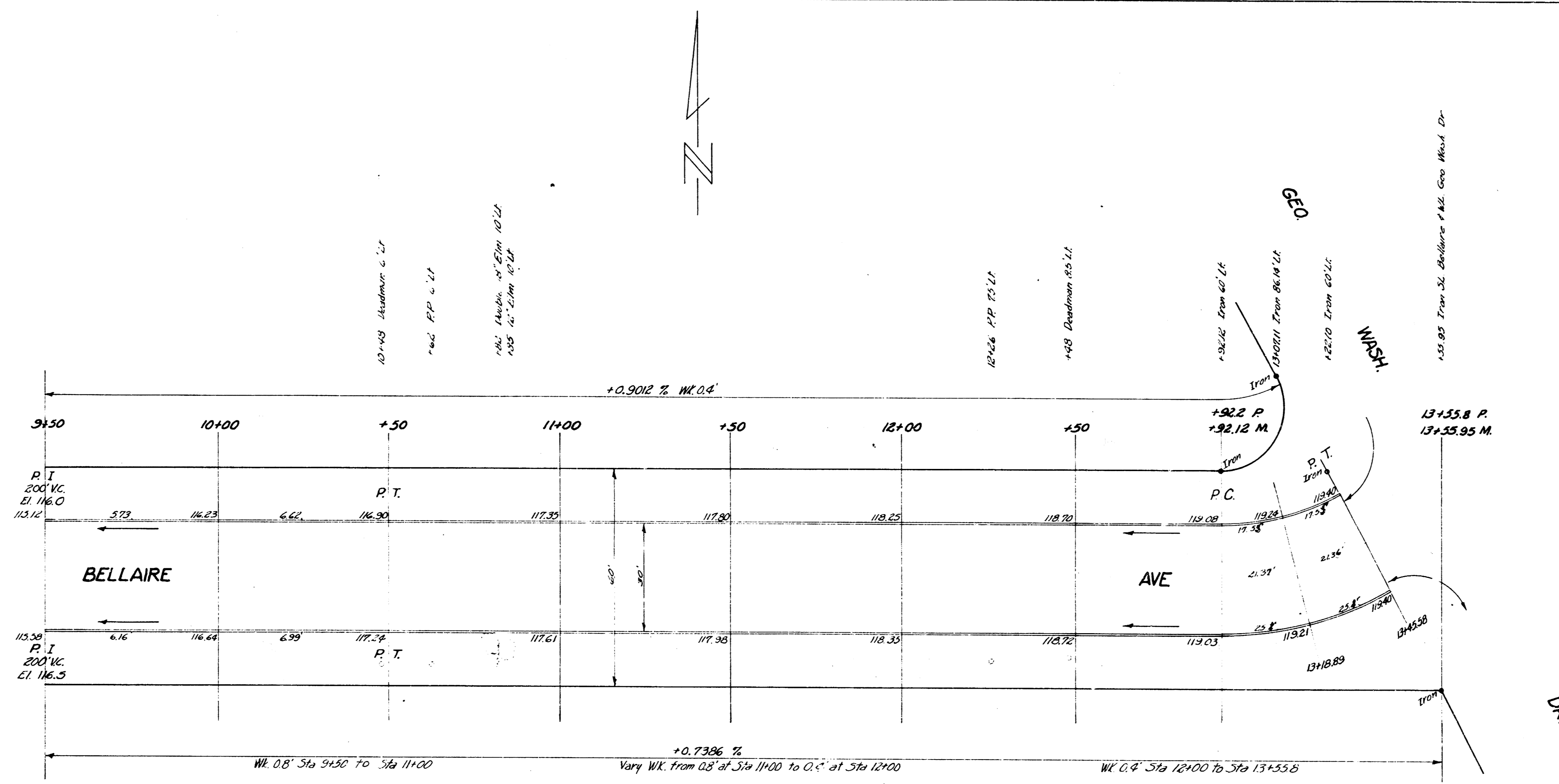


BM 99.06 "R" in Ritchie center of south radius southwest Bellaire & Hillside
 B.M. 12175 "M" in Mueller, tirekey NW cor. Bellaire & Geo. Wash. Blvd.
 Stationing on S.R.



1/5



CURVE DATA FOR 6' OFFSET FROM FACE OF C.B.

$\Delta = 29^{\circ}14'$ $R = 104.64'$ $L = 53.38'$

Sta.	Arc Length	Chord Length	Chord Bearing	Defl. α	Dist. d
12+92.2 P.C.	26.69'	26.66'	159.2'	$7^{\circ}18'30''$	$7^{\circ}18'30''$
13+45.58 P.T.	26.69'	26.68'	15.94'	$7^{\circ}18'30''$	$7^{\circ}18'30''$

3/5

BELLAIRE AVE
 PROJ. No. C13-207