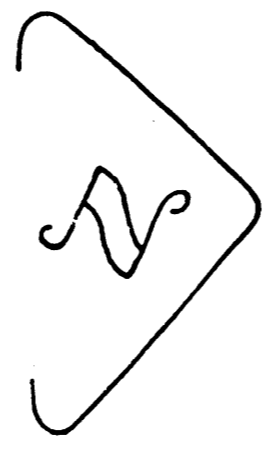
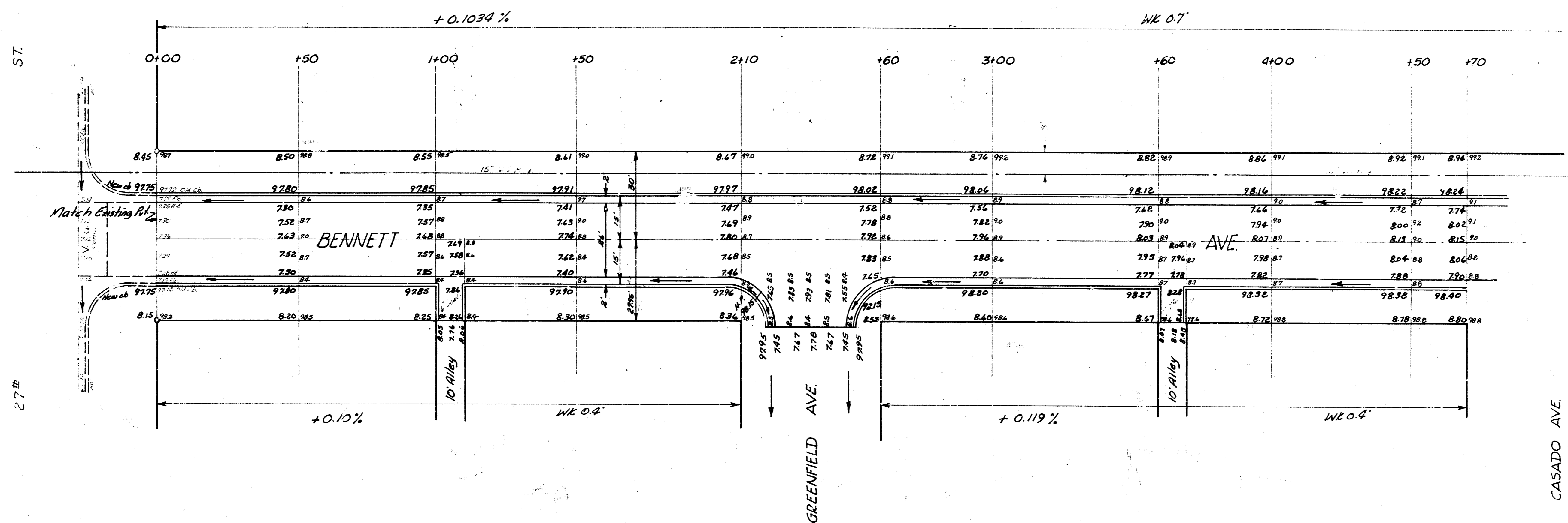


BM: 99.667 Standard NE cor Meridian & 27<sup>th</sup> St S.  
 BM: 98.23 "E" in Ritchie Wcb Everett & NL 27<sup>th</sup> St S.  
 BM: 97.72 "E" in Ritchie Wcb Bennett & NL 27<sup>th</sup> St S.



NOTICE TO FIELD ENGINEER: If drives are constructed on WS Bennett check settlement of sewer ditch to determine if extra steel will be needed in the drives.

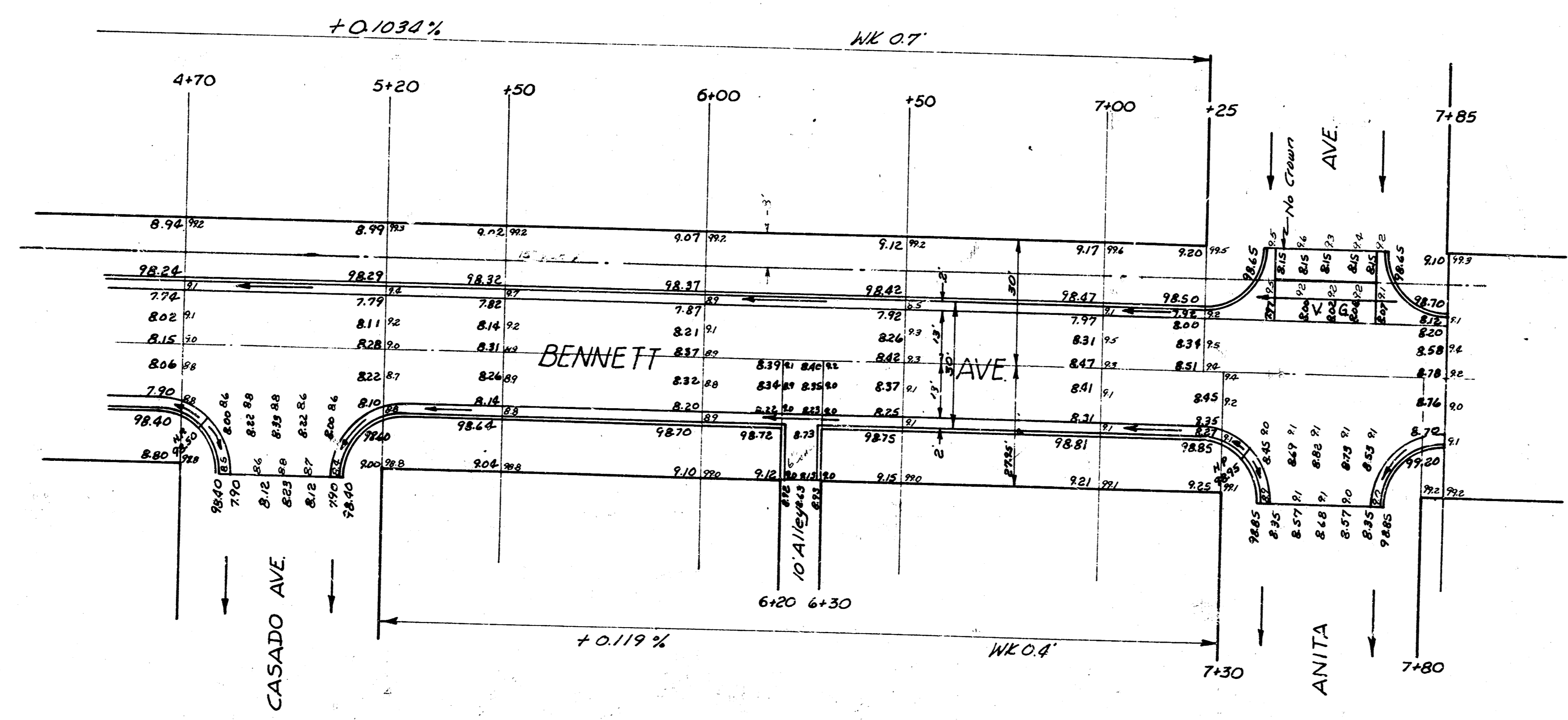
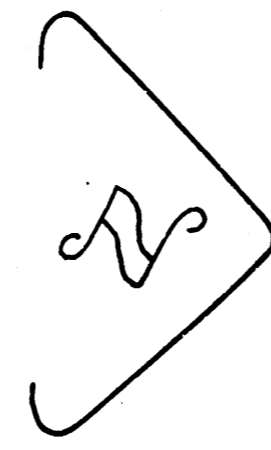
C.H. SMITH - CHANGES  
 Green  
 Greene



Sheet 1 of 2



BENNETT AVE.  
 NL 27<sup>th</sup> St NL Anita Ave.  
 26-2-30AC  
 CITY OF WICHITA, KANSAS  
 B. E. SMITH CITY ENGINEER  
 JULY 1956 PROJ. NO. C14-304



BENNETT AVE CI4-304  
Sheet 2 of 2.