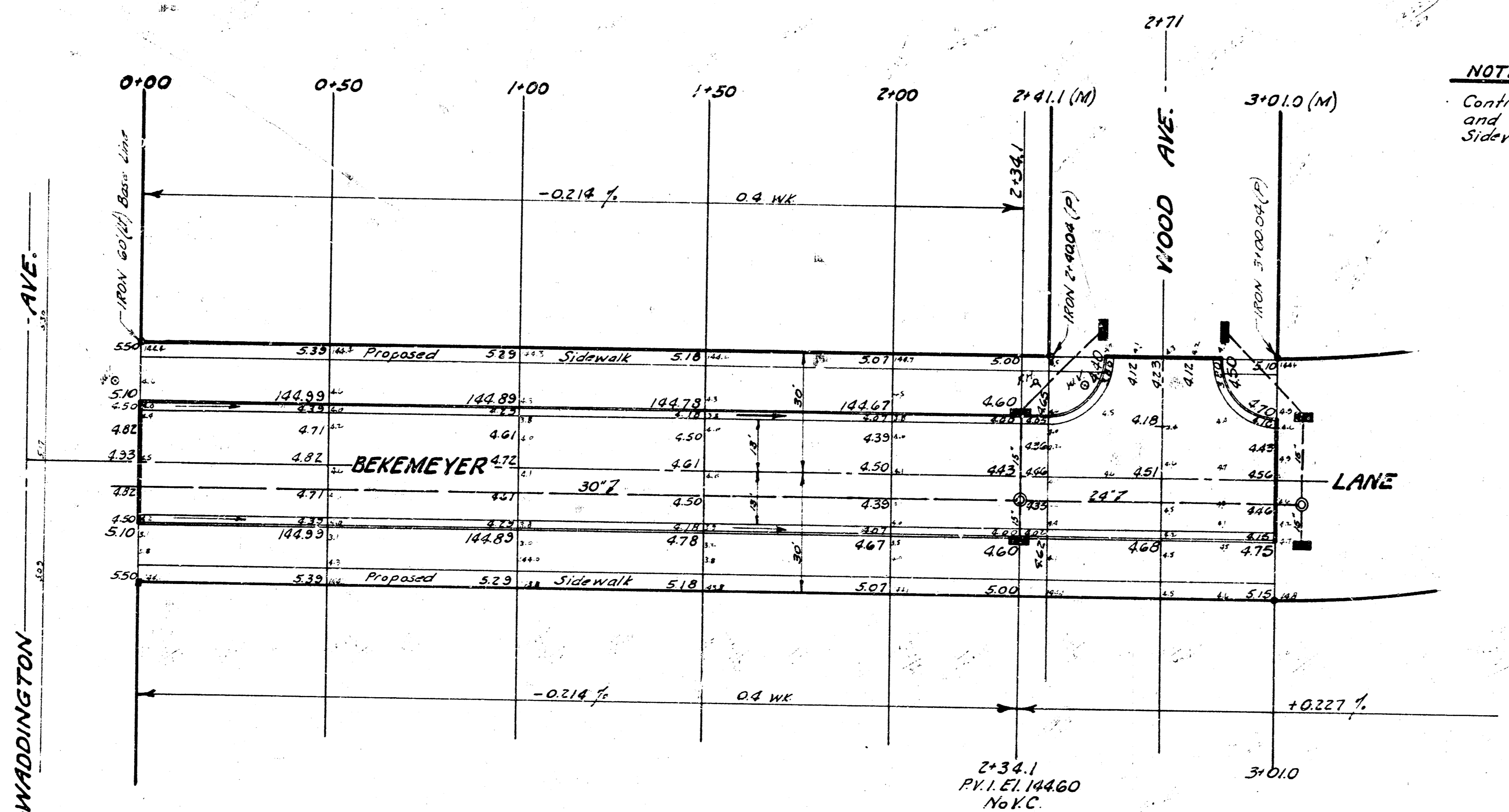


Surveyed by  
 B. E. SMITH  
 City Engineer  
 City of Wichita, Kansas



B.M. 14672 NE Corner conc park, House  
 S.W. corner Waddington & Bekemeyer.

B.M. 14498 West curb Waddington  
 at S.L. Bekemeyer.



**NOTE:**  
 Contractor to clear right-of-way, grade parkings  
 and compact fill for proposed sidewalk.  
 Sidewalk to be constructed by others.

PROPERTY		CITY	
EXCAVATION	COMPR. FILL	EXCAVATION	
73 Cu.Yds.	69 Cu.Yds.	47 Cu.Yds.	
+10%	8 "	5 "	
Totals 87 Cu.Yds.	76 Cu.Yds.	52 Cu.Yds.	



**BEKEMEYER LANE**  
 From E.L. Waddington Ave.  
 to E.L. Wood Ave.  
 26-2-30 A.C.  
 B.E. SMITH CITY ENGINEER  
 CITY OF WICHITA KANSAS  
 Date: July 1968  
 Project No. C17-81