

**GENERAL NOTE:**

All traverse points above Douglas Ave. are 1948 traverse points. Points indicated thus are points on original (1932) traverse. Dotted line traverse indicates original traverse. All 1948 traverse points are marked by iron pins unless otherwise indicated. 1948 traverse is balanced and adjusted with closure lines as shown. Azimuths and coordinates are from assumed data. Bank lines below Douglas Ave. are as traced from original tracing. Bank lines above Douglas Ave. are from topography, June, 1948.

**RIGHT BANK**

- Sta 1131+15.36  
N-7746.78 E-7611.55  
74' E to handrail post.  
0.25' S to end of bridge.
- Sta 1125+14.01  
N-9322.28 E-8201.90  
9.9' S to edge of N curb McLean Blvd.  
9.4' S.W. to Handley & McLean Blvd. Marker  
45.6' N to St. light conc. post.
- Sta 1119+63.14  
N-9516.79 E-7400.55  
9.6' S to base of light post.  
9.7' S to U.S. Engrs. B.M. TSB-29-1947
- Sta 1112+58.24  
N-9234.24 E-9386.35  
U.S. Engrs. B.M. TSB-90-1947
- Sta 1108+08.88  
N-8968.02 E-9148.36  
"X" on N curb of A end 2nd St. Bri.  
5.25' E to N.W. handrail.
- Sta 1103+07.68  
N-8510.02 E-9969.01  
Concrete Monument, pipe in center  
19.3' N to E curb McLean Blvd.
- Sta 1098+99.9  
N-8119.70 E-10055.25  
10.3' S to N rail No. Pac. R.R. Ft.  
16.0' S.E. to N.W. cor. No. Pac. Bri. Abbut.  
11.6' S.W. to Western Union T.P.  
14.6' N.W. to base of light pole - 40' S.
- Sta 1094+75.5  
N-7704.67 E-10144.87  
"X" on S sidewalk of W end Douglas Ave. Bri.  
2.5' S to handrail abbut.  
3.7' W to W end of bridge.

**TIES AND COORDINATES LEFT BANK**

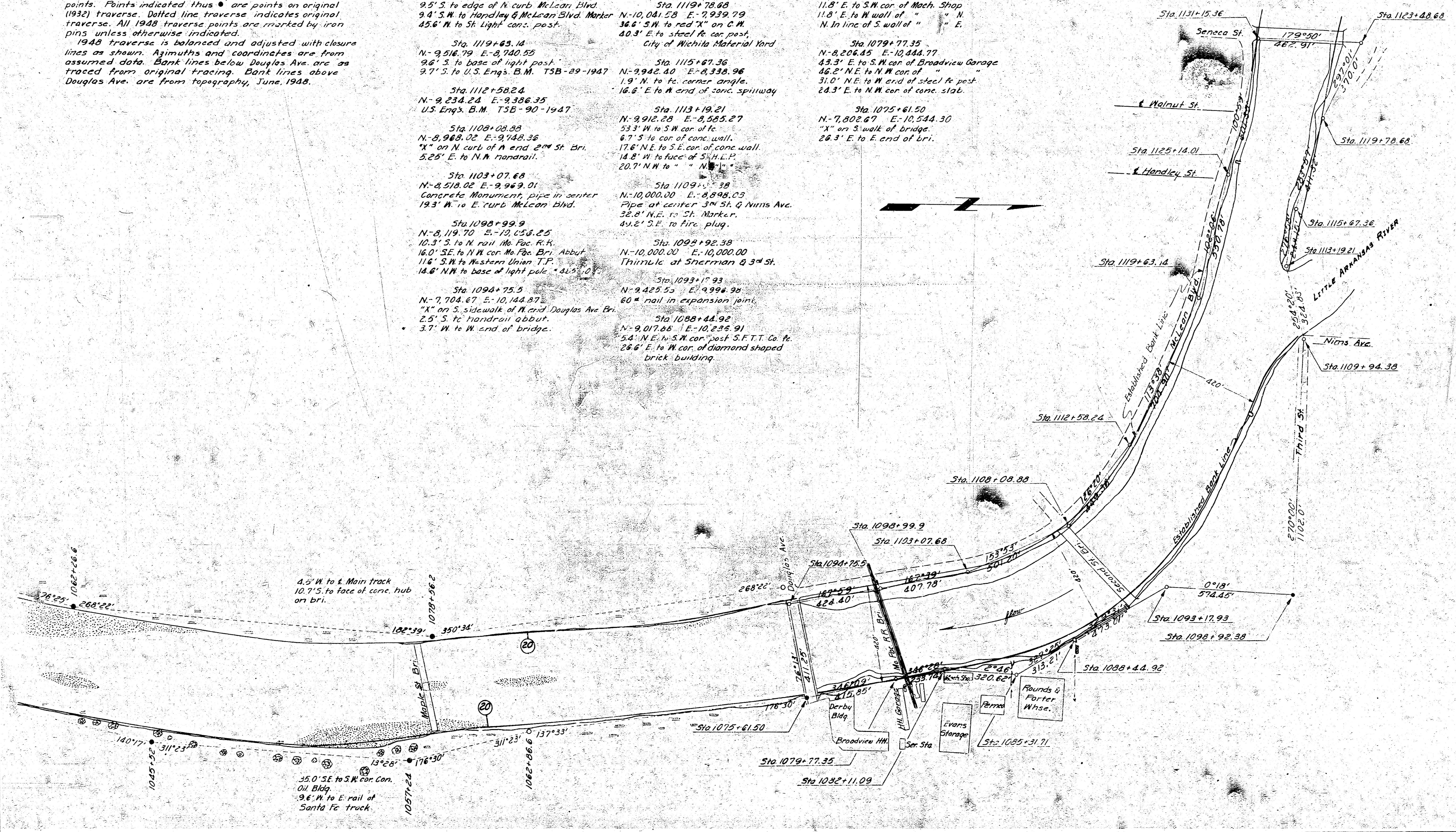
- Sta 1123+48.68  
N-10209.67 E-7810.18  
"X" on S curb W of bri. at Seneca  
85.3' S to N abbut.  
9.5' E to 2nd Hackberry E. of bri.  
10.4' N to S. edge of storm dr.  
14.5' E to W edge of sidewalk.
- Sta 1119+78.68  
N-10041.58 E-7939.79  
36.6' S.W. to red "X" on C.W.  
40.3' E to steel ft. car post.  
City of Wichita Material Yard
- Sta 1115+67.36  
N-9942.40 E-8338.96  
1.9' N to ft. corner angle.  
16.6' E to N end of conc. spillway
- Sta 1113+19.21  
N-9912.88 E-8355.27  
53.3' W to S.W. cor. of ft.  
6.7' S to cor. of conc. wall.  
17.6' N.E. to S.E. cor. of conc. wall.  
14.8' W to face of S.W. L.P.  
20.7' N.W. to " " "
- Sta 1109+31.71  
N-10000.00 E-8898.03  
Pipe at center 3rd St. Q Nims Ave.  
38.8' N.E. to St. Marker.  
49.2' S.E. to fire plug.
- Sta 1094+92.38  
N-10000.00 E-10000.00  
Thimble at Sherman & 3rd St.
- Sta 1093+17.93  
N-9425.52 E-9994.94  
60" nail in expansion joint.
- Sta 1088+44.92  
N-9017.68 E-10236.91  
5.2' N.W. to S.W. cor. Post S.F.T.T. Co. Ft.  
28.6' E to W cor. of diamond shaped brick building.

**LEFT BANK**

- Sta 1085+31.71  
N-8785.96 E-10405.57  
3.8' S.E. to 3rd steel post.  
17.3' N.E. to S.W. cor. of brick bldg.  
3.0' E to line of Rounds & Porter bldg. N.
- Sta 1082+11.09  
N-8433.71 E-10390.08  
11.8' E to S.W. cor. of Mech. Shop  
11.8' E to W wall of " " " N  
N. In line of S wall of " " E.
- Sta 1079+77.35  
N-8206.45 E-10444.77  
4.3' E to S.W. cor. of Broadview Garage  
46.2' N.E. to N.W. cor. of " " " N  
31.0' N.E. to W end of steel ft. post.  
24.3' E to N.W. cor. of conc. slab.
- Sta 1075+61.50  
N-7802.87 E-10544.30  
"X" on S walk of bridge.  
26.3' E to E end of bri.

Revised April 1949. Substituted 1948 traverse for original (1932) traverse from Seneca & Douglas Ave.	RIVER	COUNTY	MILEAGE	SHEET	TOTAL
	Arkansas	Sedgwick	20 to 21	17	40

Revised 6-8-49 M.F.F.  
Revised 3-11-49 M.F.F.



TIES TO BIG RIVER BANK SURVEY from Little River - South 5-14-53