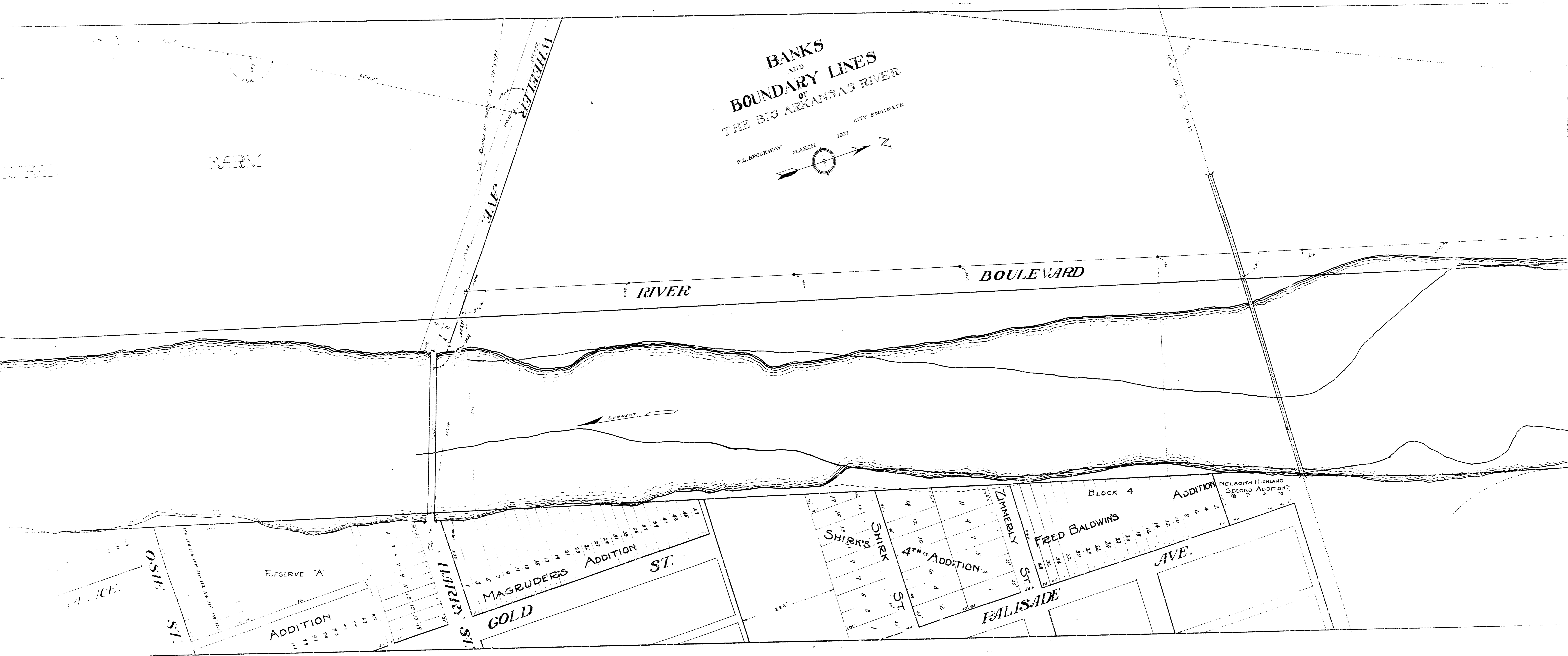
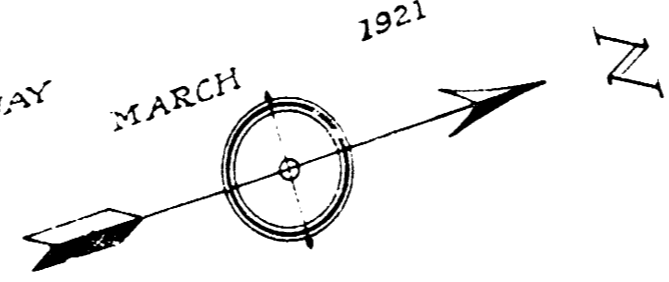




**BANKS  
AND  
BOUNDARY LINES  
OF  
THE BIG ARKANSAS RIVER**

P.L. BROCKWAY MARCH 1921 CITY ENGINEER



MOORE FARM

OSIE ST.

RESERVE A  
ADDITION

HARRY ST.

MAGRUDERS ADDITION  
GOLD ST.

SHIRK ST.

4TH ADDITION

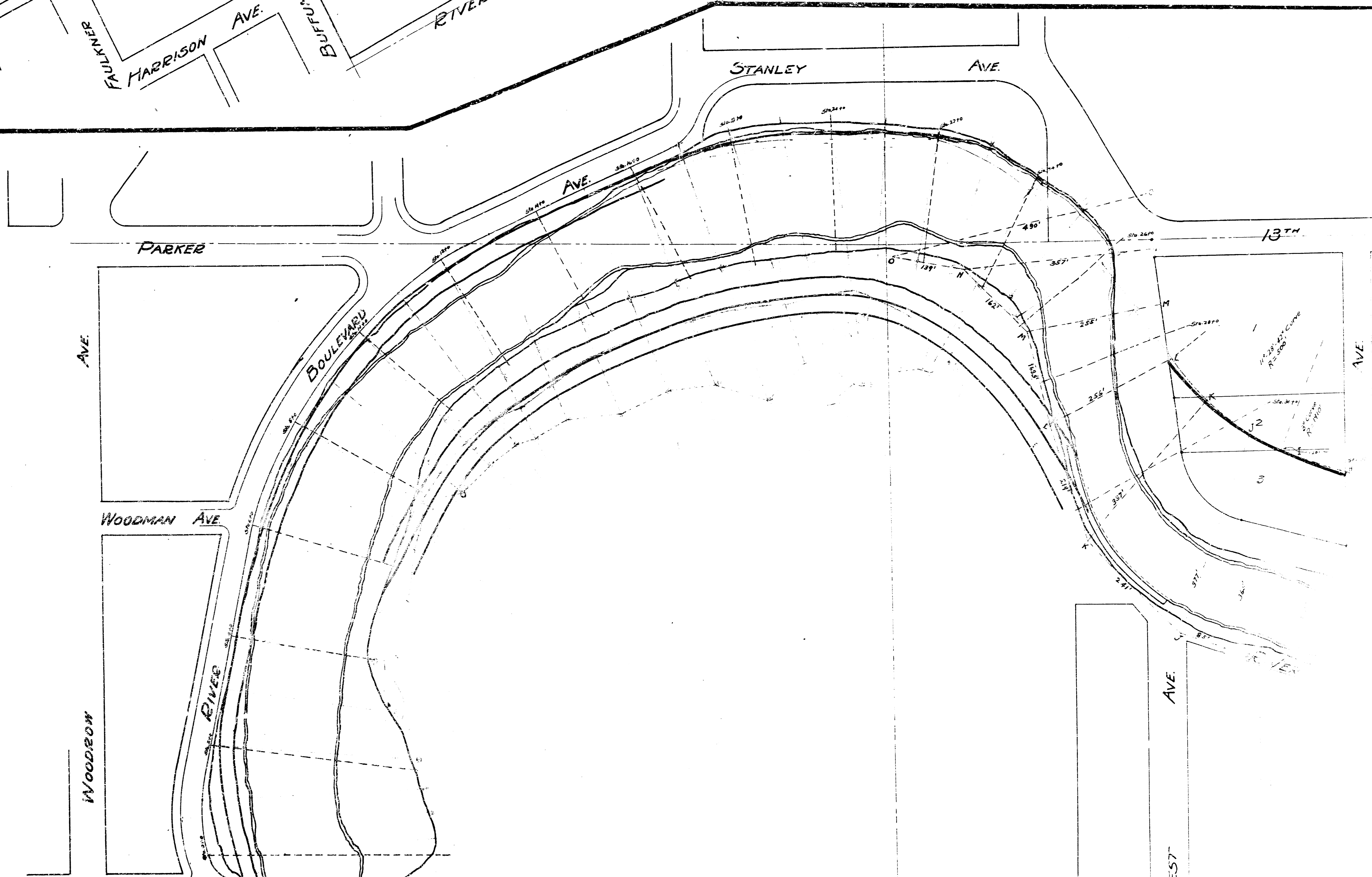
ZIMMERLY ST.

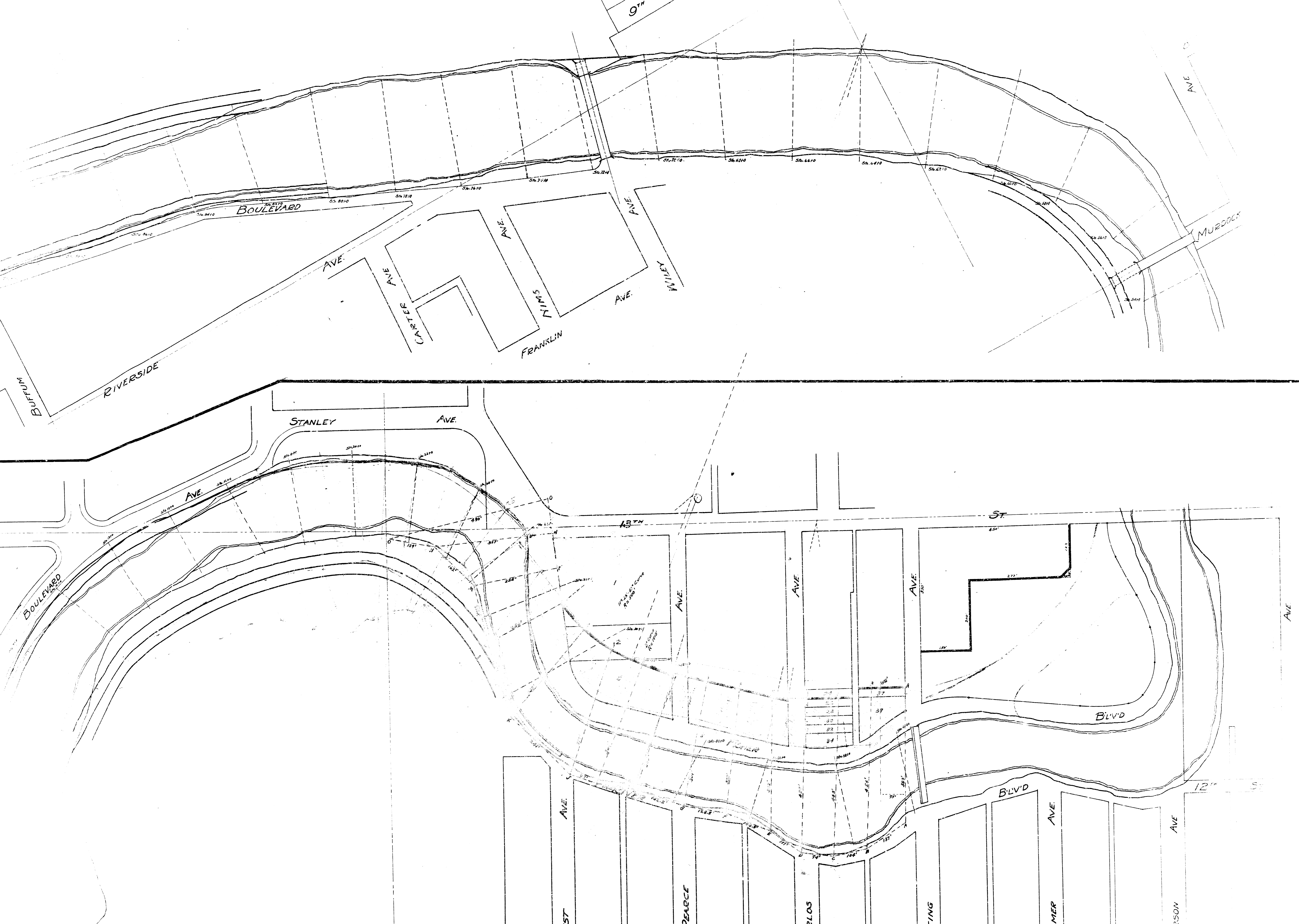
FRED BALDWIN'S  
ADDITION

Block 4

AVE.

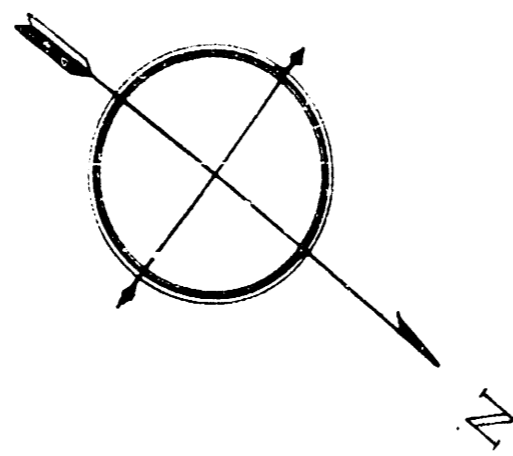
NELOONS HIGHLAND  
SECOND ADDITION



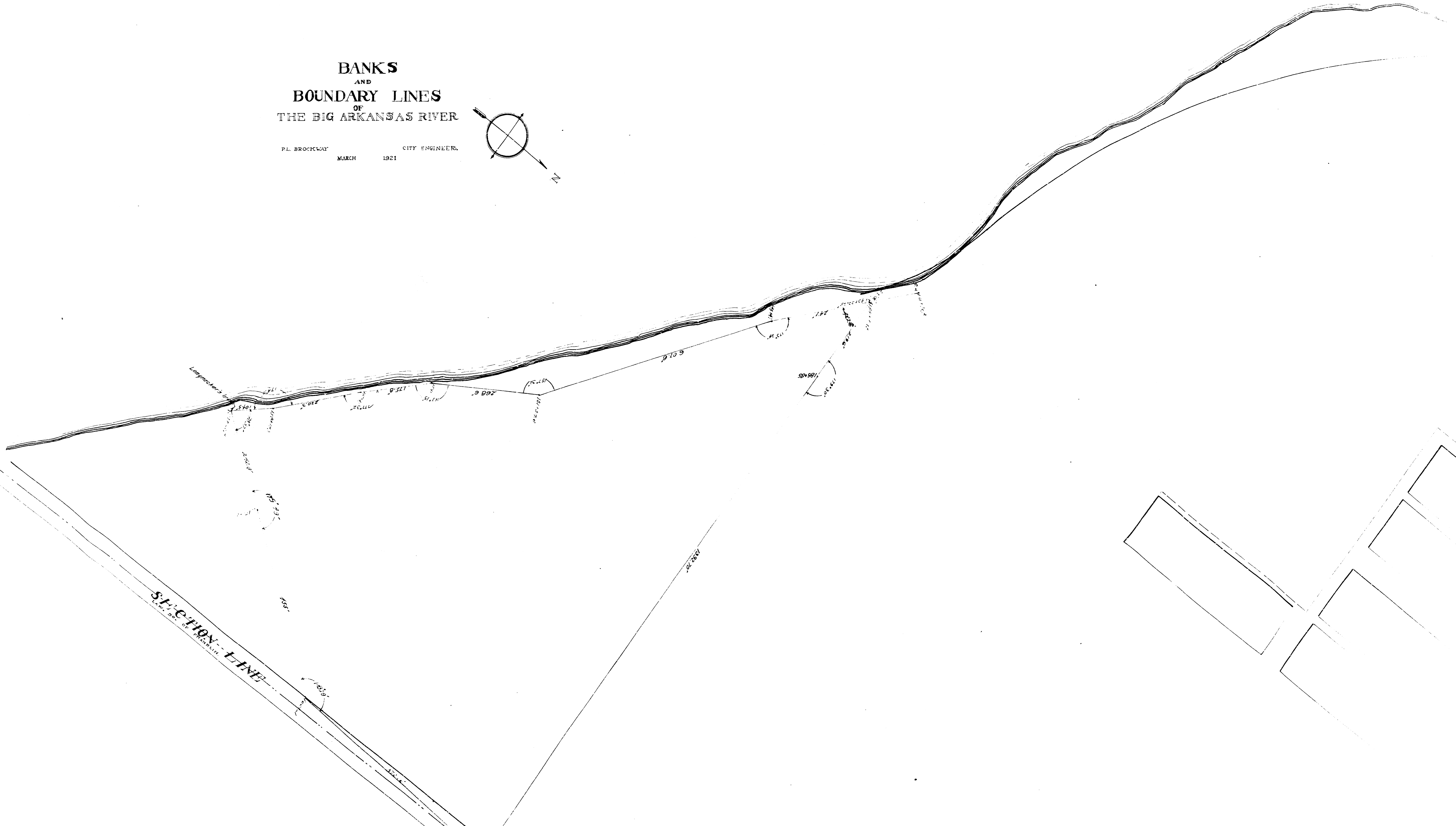


**BANKS  
AND  
BOUNDARY LINES  
OF  
THE BIG ARKANSAS RIVER**

PL. BROCKWAY CITY ENGINEER,  
MARCH 1921

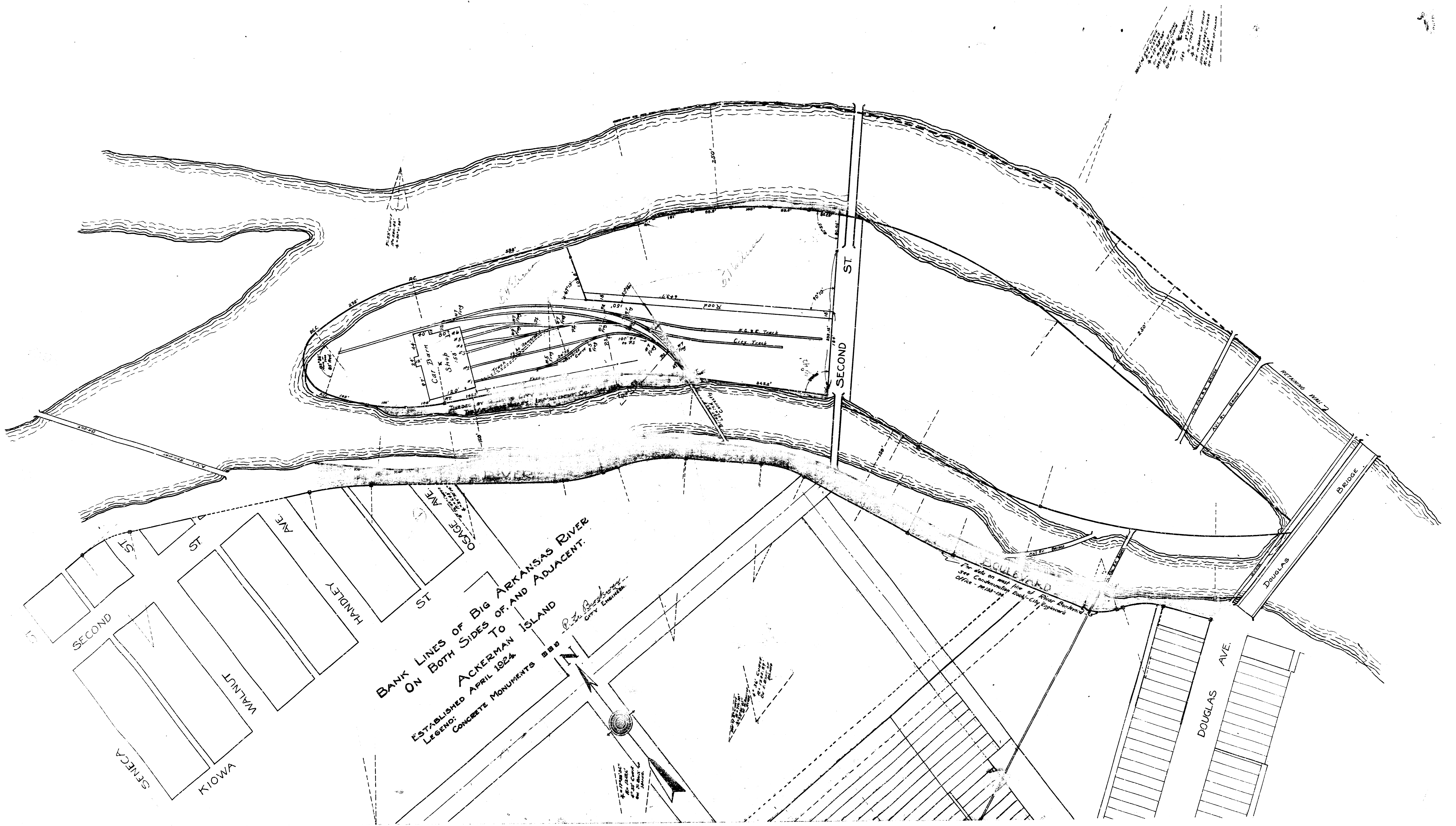


CURRENT



CURRENT





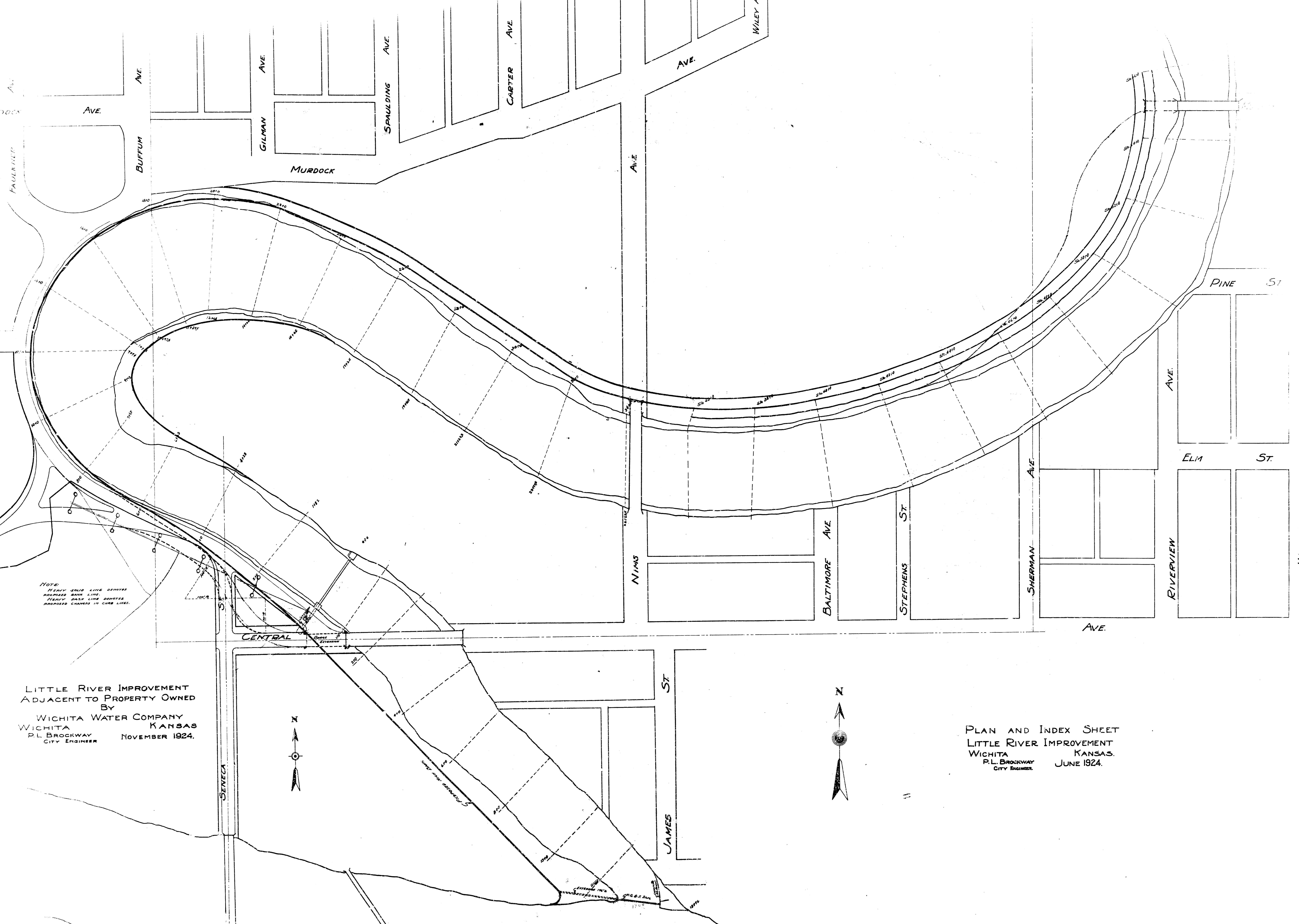
**BANK LINES OF BIG ARKANSAS RIVER  
ON BOTH SIDES OF AND ADJACENT  
TO  
ACKERMAN ISLAND**  
ESTABLISHED APRIL 1924

LEGEND:  
CONCRETE MONUMENTS BBB

*R. Z. Beckwith*  
CITY ENGINEER

For data on map file of River Bankers  
see Commissioner Rock City Engineers  
Office - 1913-1914

This map was prepared by the City Engineer of Rock City, Mo., under the supervision of the Board of Public Works, and is published for the use of the City of Rock City, Mo.

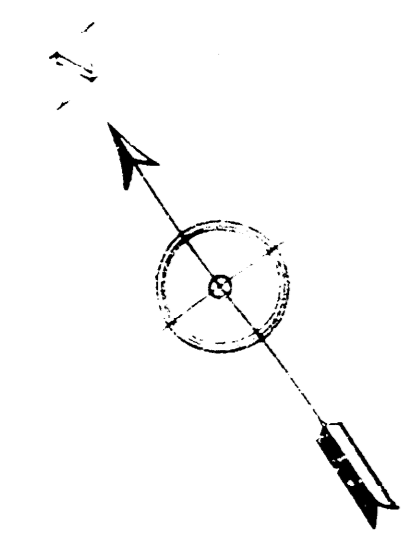


NOTE:  
 HEAVY SOLID LINE DENOTES  
 PROPOSED MAIN LINE.  
 HEAVY DASH LINE DENOTES  
 PROPOSED CHANGES IN CURB LINES.

LITTLE RIVER IMPROVEMENT  
 ADJACENT TO PROPERTY OWNED  
 BY  
 WICHITA WATER COMPANY  
 WICHITA KANSAS  
 P.L. BROCKWAY  
 CITY ENGINEER NOVEMBER 1924.

PLAN AND INDEX SHEET  
 LITTLE RIVER IMPROVEMENT  
 WICHITA KANSAS.  
 P.L. BROCKWAY  
 CITY ENGINEER JUNE 1924.





**BANKS  
AND  
BOUNDARY LINES  
OF THE BIG ARKANSAS RIVER.**

E. BARTON MARCH 1881  
CITY ENGINEER.

NOTE LINE OF SIM PARK DRIVE  
NOTE LINE OF WATERWORKS PROPERTY





AVI

CURRENT

AVI TRACK

MIDLAND

VALLEY

Reserve C

ST.

Reserve C

ST.

NIEDERLANDS

ST.

ST.

HENDON

ADDITION

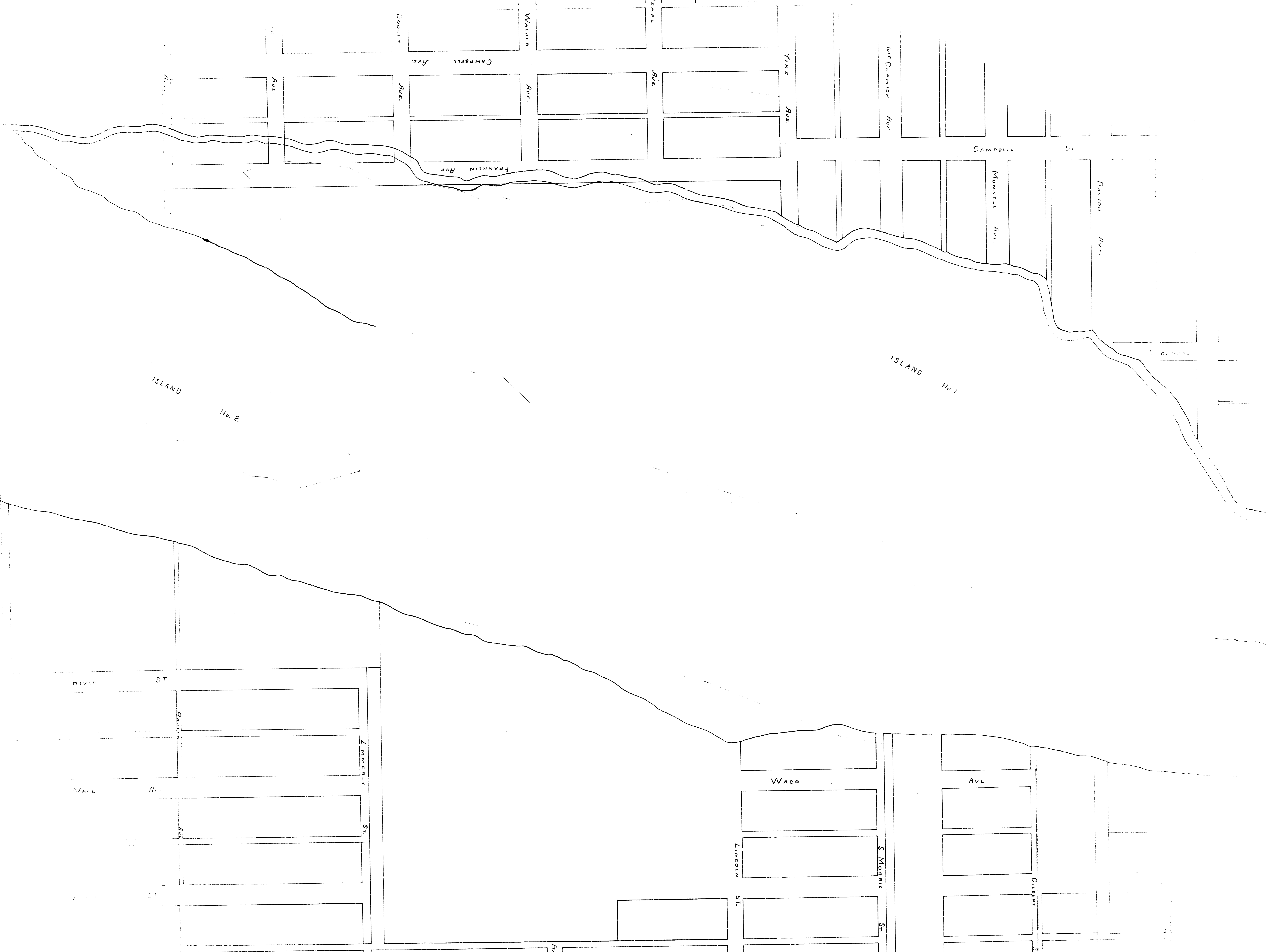
ST.

RESERVE B

RESERVE C

AVI





ISLAND No. 2

ISLAND No. 7

DOOLEY

WALKER

LEARN

YIKE

McCormick

CAMPBELL St.

DAVTON

CAMER

CAMPBELL Ave.

FRANKLIN Ave.

MUNNELL Ave.

RIVER ST.

WACO Ave.

WACO

Ave.

ZIMMERY

LINCOLN ST.

S. MORRIS

CHURCH

ST.

B...

S



