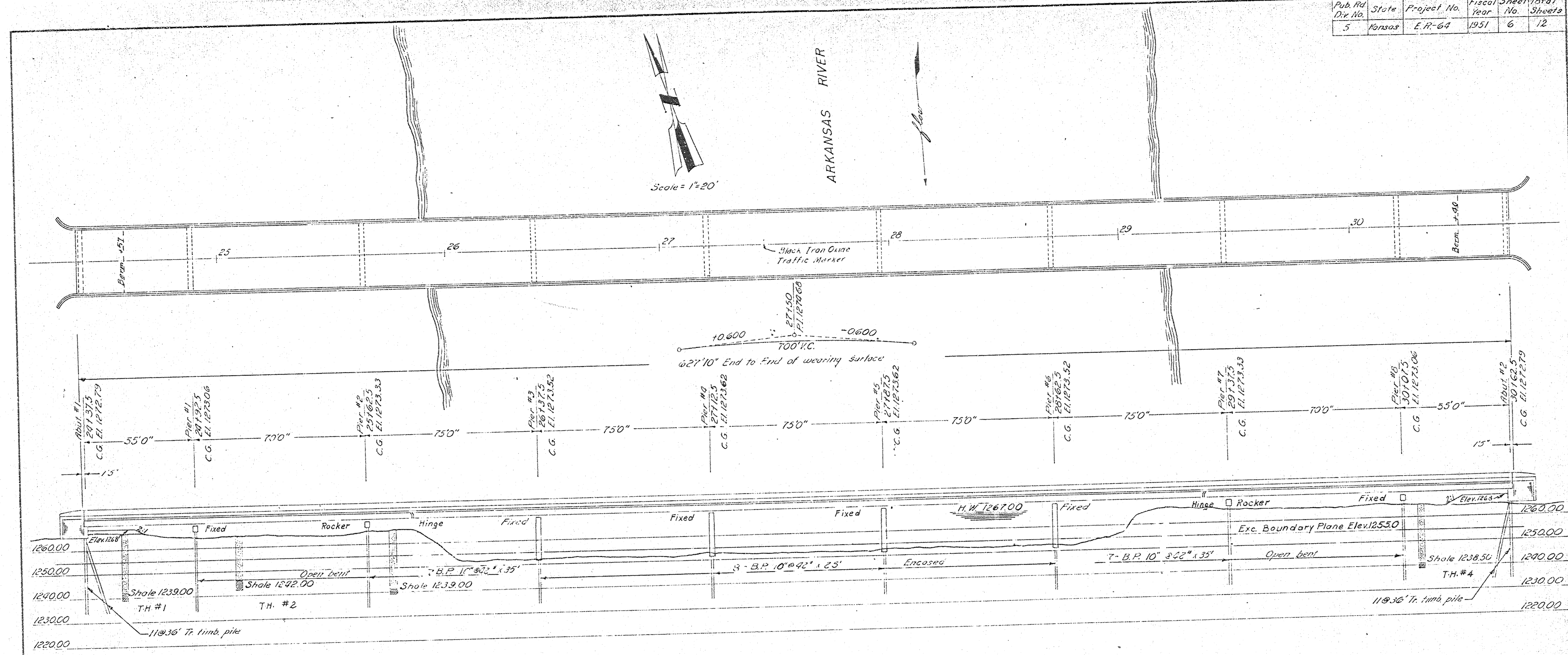


Pub. Ad. Dist. No.	State	Project No.	Fiscal Year	Sheet No.	Total Sheets
3	Arkansas	E.R-64	1951	6	12



**PLAN AND ELEVATION**  
 55'-70'-5 @ 75'-70'-55' CONTINUOUS STEEL SPANS  
 ON PILE BENT PIERS OPEN TYPE ABUTMENTS 26' ROADWAY.

**GENERAL NOTES**

- Design: A.R.S.H.O. Specs. for 11-20-40 loading  
Structural Steel - 18,000 p.s.i.  
Reinforcing Steel (int. gr.) - 20,000 p.s.i.  
Concrete - 1,000 p.s.i.
- Soundings: No. 12,344 taken with 36" jet of water right by Sedgwick County. The embankment at the abutments shall be built & compacted before construction of abutments.
- Embankment: H-beam piling shall be driven to a computed bearing value of 37 tons per pile, timb. piling 18 tons per pile.
- Piling: Elevation 1235.0 shall be the excavation boundary plane of class I & class II excavation. Class I above the plane & class II below.
- Excavation: Clearing, grading, & surfacing to be done by Sedgwick County & is not a part of this project.
- Clearing & Surfacing: Ulnic timb. test pile shall be driven at approximately the location shown before any other piling in that vicinity is driven. Test pile shall be cut off well below the ground line & shall remain in place.

Drainage Area 41,700 sq. ft.  
 Discharge 7020.37 ft.  
 Waterway

**BENCH MARKS**

- B.M. #1 Top of brass plate in conc. marker, Corps of Eng. B.M. 20' U. sta. 21130 in E&W. fo. - El. 1269.65
- B.M. #2 Step 60" in trans. pole 25' U. sta. 125 - El. 1269.80
- B.M. #3 Step 60" in 14" hackberry 30' U. sta. 38120 - El. 1265.84

**SUMMARY OF QUANTITIES**

Excavation Class I	102 Cu Yd
Excavation Class II	50 Cu Yd
Class A (R.E.) Concrete	184 Cu Yd
Reinforcing Steel @ 20,000 p.s.i.	18,330 Lb.
Structural Steel	2,370 Lb.
Bearing Devices	4,128 = 212 Pkts.
Tr. timb. piles	4 792 Lin Ft.
Metal pile points	2 each
10" x 2" steel Piles	4 730 Lin Ft.

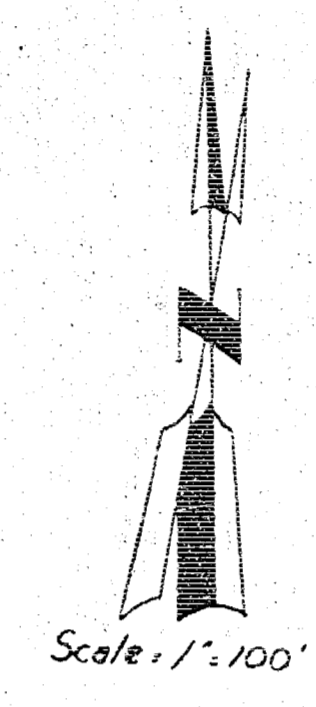
+ 289.35' x 32' x 25'  
 1 22' x 35'

**CONSTRUCTION LAYOUT**  
**BRIDGE NO. 630-28-2750**  
**55'-70'-5 @ 75'-70'-55' SPANS**

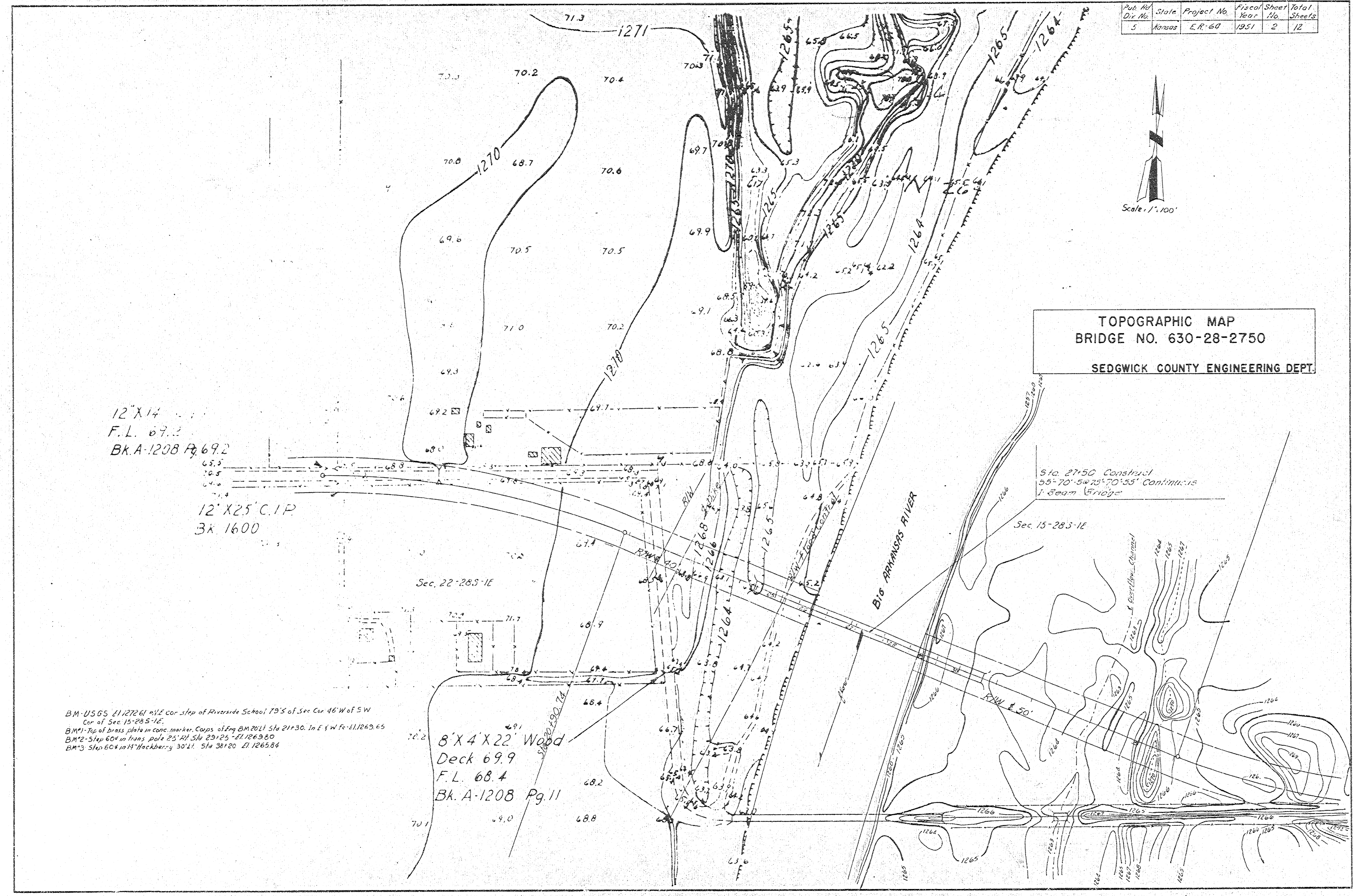
PREPARED BY  
**SEDGWICK COUNTY ENGINEERING DEPT.**  
**RUFUS S. KIRK COUNTY ENGINEER**

REVISED	SCALE	DESIGNED	TRACED	CHECKED	SHEET NO.
2-25-51 RSK	1"=20'	R.S.K.	L.H.H.	M.S.	
DATE	PLANFILE	TOTAL SHEETS			

Pub. No.	State	Project No.	Fiscal Year	Sheet No.	Total Sheets
5	Kansas	E.R. 60	1951	2	12



TOPOGRAPHIC MAP  
 BRIDGE NO. 630-28-2750  
 SEDGWICK COUNTY ENGINEERING DEPT.



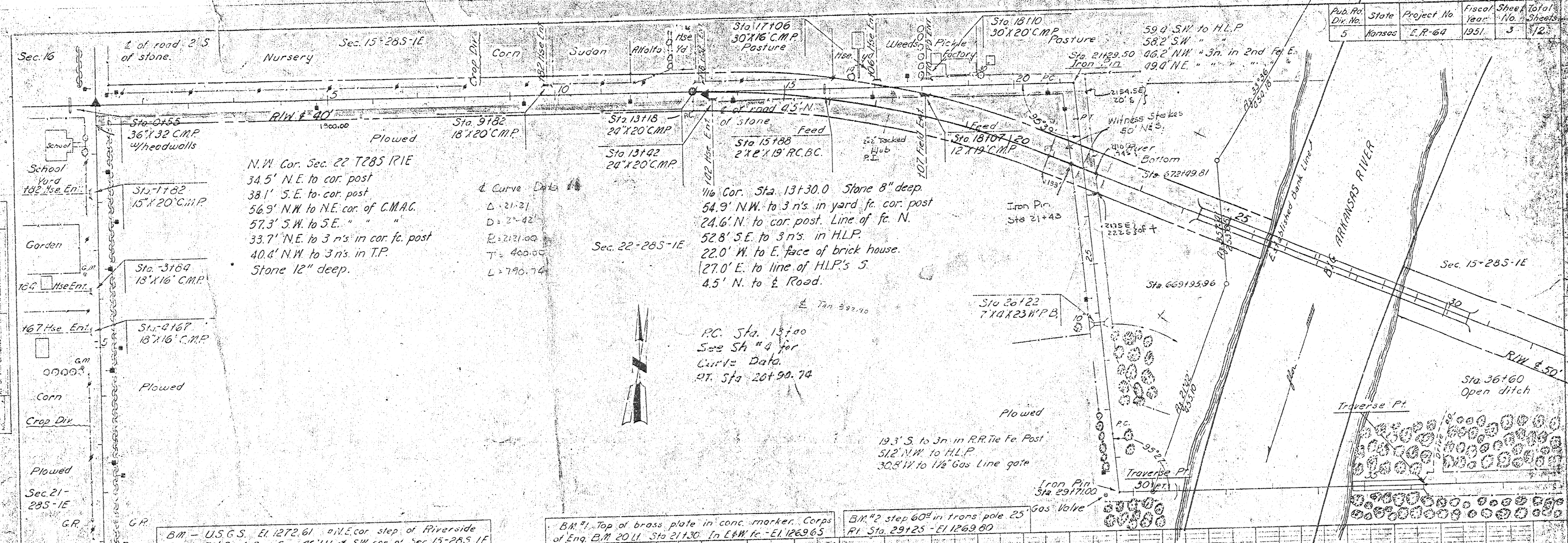
BM - USGS 41127261 N.E. cor. of Riverside School 79'S of Sec. 46'W of E.S.W.  
 cor. of Sec. 15-28.5-1E.  
 BM1 - Top of brass plate in conc. marker. Copied by BM 2011 Sta 21130. In E & W Fe-411269.65  
 BM2 - Top of brass plate 25' N Sta 25125-411269.60  
 BM3 - Top of brass plate 30' N Sta 30120-411269.84

8'x4'x22' Wood  
 Deck 69.9  
 F.L. 68.4  
 Bk. A-1208 Pg. 11

Sta. 2750 Construct  
 59'-70'-54.75'-70'-55' Continuous  
 1-Beam Bridge

630-28-2750

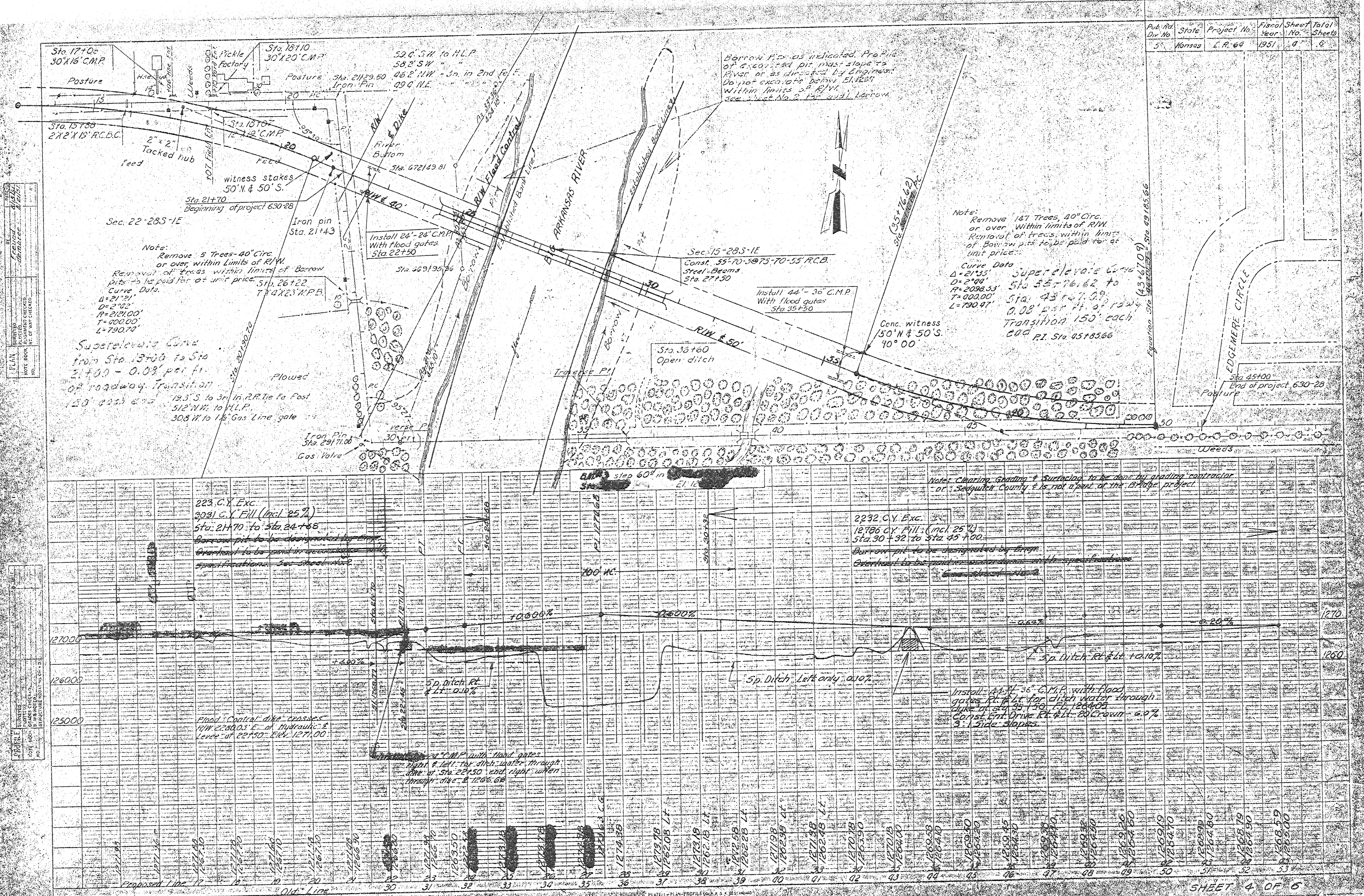
Pub. No.	State	Project No.	Fiscal Year	Sheet No.	Total Sheets
5	Kansas	L.R. 64	1951	3	12



PLAN	DATE	BY	CHECKED
BRIDGE	1951	J. H. ...	...

PROFILE	DATE	BY	CHECKED
BRIDGE	1951	J. H. ...	...





Pub. No.	State	Project No.	Fiscal Year	Sheet No.	Total Sheets
5	Missouri	L.R. 64	1951	4	6

PLAN  
 1/4" = 100'  
 1/8" = 100'  
 1/16" = 100'

PROFILE  
 1/4" = 100'  
 1/8" = 100'

Sta. 17+00 30'x16' C.M.P.  
 Posture  
 Sta. 18+00 24'x12' R.C.B.C.  
 Tacked hub  
 Sta. 18+10 30'x12' C.M.P.  
 Pickle Factory  
 Sta. 18+10 52' S. to H.L.P.  
 58' S.W.  
 Sta. 21+29.50 46' E. N.W. - 30' in 2nd ft. E.  
 Iron Pin 09'6" N.E.  
 Sta. 21+70 Beginning of project 630-28  
 Sec. 22-28S-1E  
 Note: Remove 5 Trees - 40' Circ. or over, within limits of R/W. Removal of trees within limits of Borrow pits to be paid for at unit price.  
 Curve Data:  
 Δ = 21°02'  
 R = 2121.00'  
 T = 200.00'  
 L = 790.97'  
 Superelevation Curve from Sta. 37+00 to Sta. 21+00 - 0.08' per ft. of roadway. Transition 150' each end.  
 193' S. to 3rd in P.R.T. to Post 512' N.W. to H.L.P.  
 308' W. to 16" Gas Line gate  
 Iron Pin Sta. 29171.00  
 Gas Valve  
 Plowed  
 7'x23' W.P.B.  
 311.26122  
 Sta. 22+50  
 Install 24'-24" C.M.P. With flood gates  
 Sta. 22+50  
 Sta. 269130.00  
 Arkansas River  
 Borrow pits as indicated. Pro. 2 1/2' of excavation per inch slope to River or as directed by Engineer. Do not excavate below 512' E.M.S. Within limits of R/W. See sheet No. 2 for detail borrow.  
 Sec. 15-28S-1E  
 Const. 35'-70'-3075'-70'-55' R.C.B.  
 Steel Beams  
 Sta. 27+50  
 Install 44'-36" C.M.P. With flood gates  
 Sta. 30+00  
 Conc. witness 150' N x 50' S 90° 00'  
 Note: Remove 187 Trees, 40' Circ. or over, within limits of R/W. Removal of trees within limits of Borrow pits to be paid for at unit price.  
 Curve Data:  
 Δ = 21°35'  
 R = 2098.33'  
 T = 900.00'  
 L = 790.97'  
 Superelevation Curve from Sta. 35+76.62 to Sta. 43+67.09  
 0.08' per ft. of roadway. Transition 150' each end.  
 C.M.P. PI. Sta. 45183.66  
 Sta. 45100 End of project 630-28  
 Pasture  
 Edge-Mere Circle  
 Note: Clearing, Grading & Surfacing to be done by grading contractor or Sanguin County & is not a part of this bridge project.  
 223 C.Y. Exc.  
 3091 C.Y. Fill (incl. 25%)  
 Sta. 21+70 to Sta. 22+78  
 Borrow pit to be designated by Engineer.  
 Overhead to be maintained with open frame.  
 2232 C.Y. Exc.  
 12786 C.Y. Fill (incl. 25%)  
 Sta. 30+32 to Sta. 45+00  
 Borrow pit to be designated by Engineer.  
 Overhead to be maintained with open frame.  
 Flood Control dike crosses R/W 22+00.3 E. of Hydraulic Level of 22+50. Elev. 1271.00  
 5' Ditch Rt. & Lt. 0.10%  
 5' Ditch Left only 0.10%  
 Install 44'-36" C.M.P. with flood gates PI. for ditch water through dike at Sta. 35+76.62. C.M.P. Drive R.C.B. 50' down - 0.2% 2' 1" side slopes.  
 Proposed Line 12  
 Old Line  
 12700  
 12800  
 12900  
 13000  
 13100  
 13200  
 13300  
 13400  
 13500  
 13600  
 13700  
 13800  
 13900  
 14000  
 14100  
 14200  
 14300  
 14400  
 14500  
 14600  
 14700  
 14800  
 14900  
 15000  
 15100  
 15200  
 15300  
 15400  
 15500  
 15600  
 15700  
 15800  
 15900  
 16000  
 16100  
 16200  
 16300  
 16400  
 16500  
 16600  
 16700  
 16800  
 16900  
 17000  
 17100  
 17200  
 17300  
 17400  
 17500  
 17600  
 17700  
 17800  
 17900  
 18000  
 18100  
 18200  
 18300  
 18400  
 18500  
 18600  
 18700  
 18800  
 18900  
 19000  
 19100  
 19200  
 19300  
 19400  
 19500  
 19600  
 19700  
 19800  
 19900  
 20000